

Enhanced Membership Model re-focuses At-large


Still have 3 layers of hierarchy*;

ALAC → 2 hats each (and only 2)

RALO → outreach, funnel, mentor

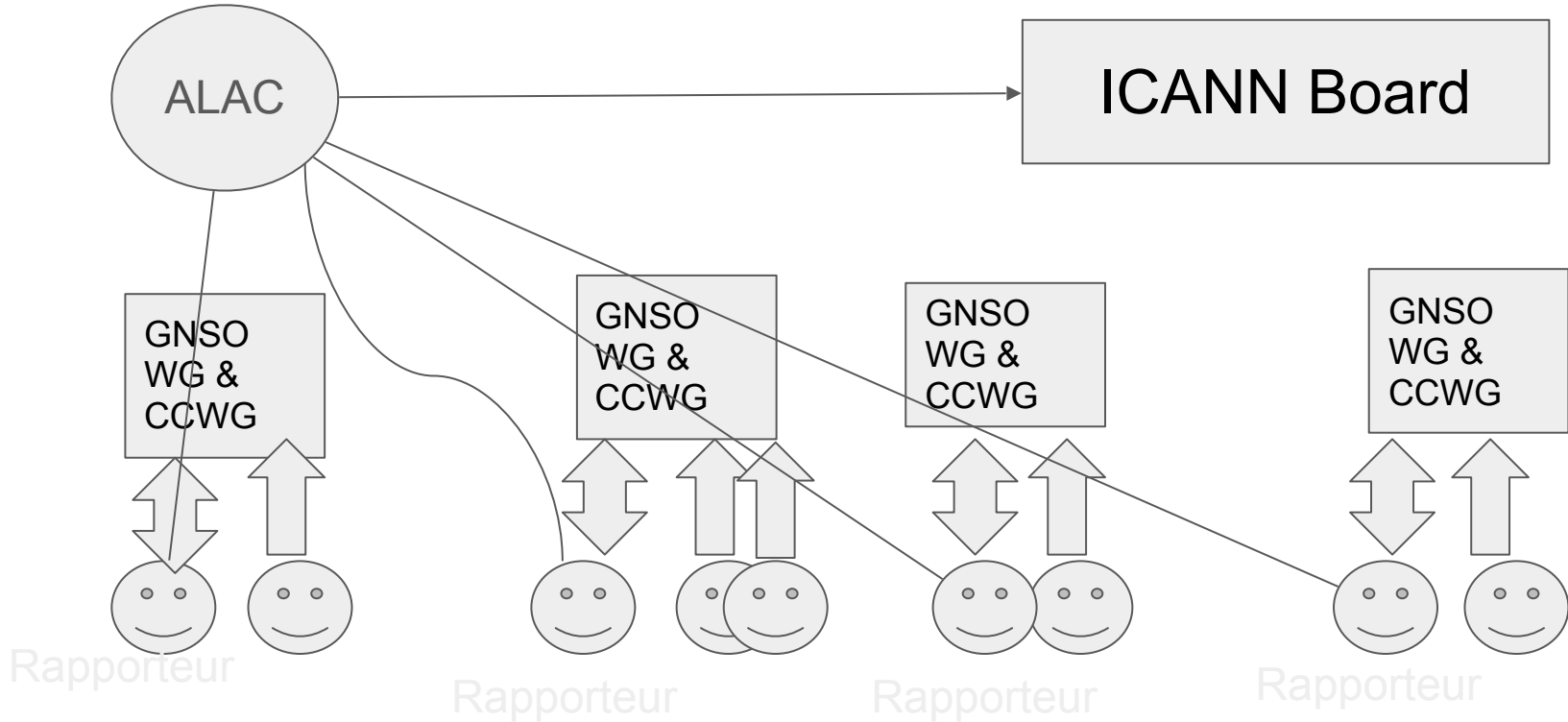
ALMs (At Large Members) → participate in GNSO PDP and CCWGs, act as Rapporteurs

*(Maybe 4 layers if we can be convinced and ALT is needed)

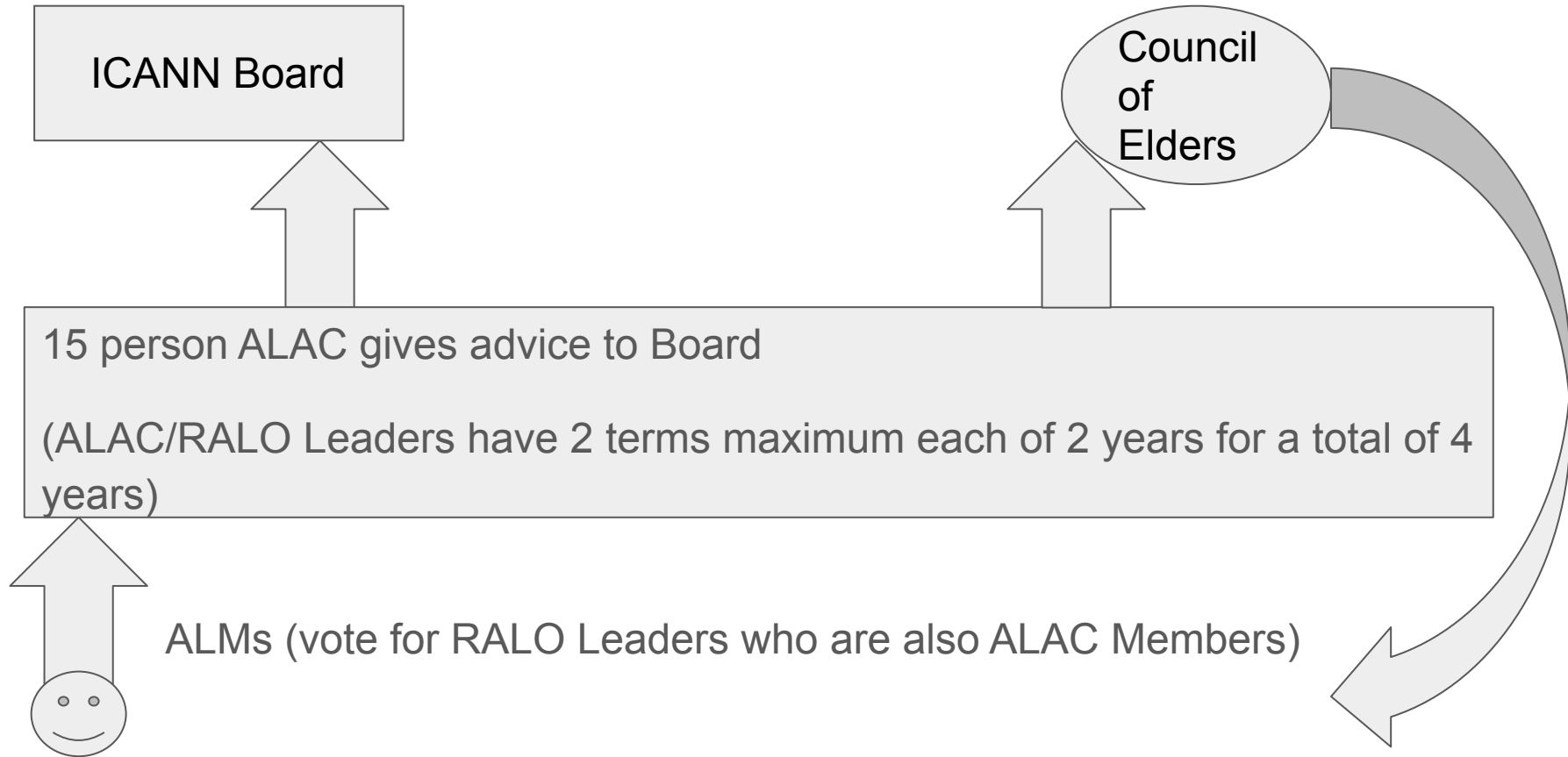


CoE → institutional
memory, mentorship

Policy Development = Bottom Up



Elections: “up and out” system to combat stagnation



New Roles, Old Roles, Mixed Roles

- **Rapporteurs** = ALMs who are active in WGs may volunteer for a 1 year Rapporteur role. They report on WG to ALAC and back to WG with ALAC views if needed
- **10 regionally elected ALAC Members also serve as RALO Leaders.** Since they have 2 hats, they will not have any formal At-Large role on any Working Group.
- **5 NomCom Members** are “Liaisons” to ccNSO, GNSO, SSAC, GAC and CSC
- **Council of Elders** serve as mentors and institutional memory, they are expected to attend ALAC meetings, etc

EMM aims to ease burdens, simplify & reduce load

ALAC Members can ONLY have 2 roles

More volunteers at WG level means shared workload/less burnout

No need to have extensive RALO focus

No need to spend inordinate amounts of time on internal processes

Random selection processes (RFC3797 or similar) take away
much of election/selection workload