



# ICANN At-Large Onboarding

Dev Anand Teelucksingh | Isaac Maposa | Beran Gillen  
Community Onboarding Program |  
23 December 2016

# What is Onboarding?

- Assimilation of new community members and empowering them with the right tools and knowledge to **ACTIVELY** participate.
- Participants and community members of ICANN get involved through different **MEANS** i.e. The Fellowship program, The Nextgen program, professional affiliation, National/ Regional activities as well as through Global events.
- The community onboarding program should cater for everyone regardless of the **STAGE** one joins the ICANN community from whether as a complete newcomer or someone a bit more read in.

Promoting



Understanding



Joining



Engaging

- ◉ Promoting At- Large
  - Target participants for At Large
  - How each type of participant can be involved in At Large
  - What should draw them to this unique and diverse community
- ◉ Understanding At-Large
  - How the community operates
  - Information on community activities
  - Community organisational structure
- ◉ Joining At-Large
  - Various ways to join the At-Large community through various mediums
- ◉ Engaging in At-Large
  - Active participation & involvement
  - stage leading to further involvement
  - such as leadership positions.



# Promoting At-Large

## Who can be part of At-Large?

# Promoting At-Large

If you are a person or belong to a group that follows, cares and is enthusiastic about Internet Governance issues (such as Digital Divide, Net Neutrality, Privacy and Security) as they affect end users, then your place is within the At Large Community.

Examples of these groups include:

Technical Groups

Academia

Civil Society

Consumer Groups

Enthusiasts

Technical  
groups

students and  
professors,  
student  
unions

ICT  
Associations,  
ISOC  
Chapters,  
YMCAs

Advocacy  
Groups

Anyone  
interested or  
affected by  
the Internet

- At-Large welcomes different people from different backgrounds all with one interest, **HOW THE INTERNET AFFECTS THEM.**



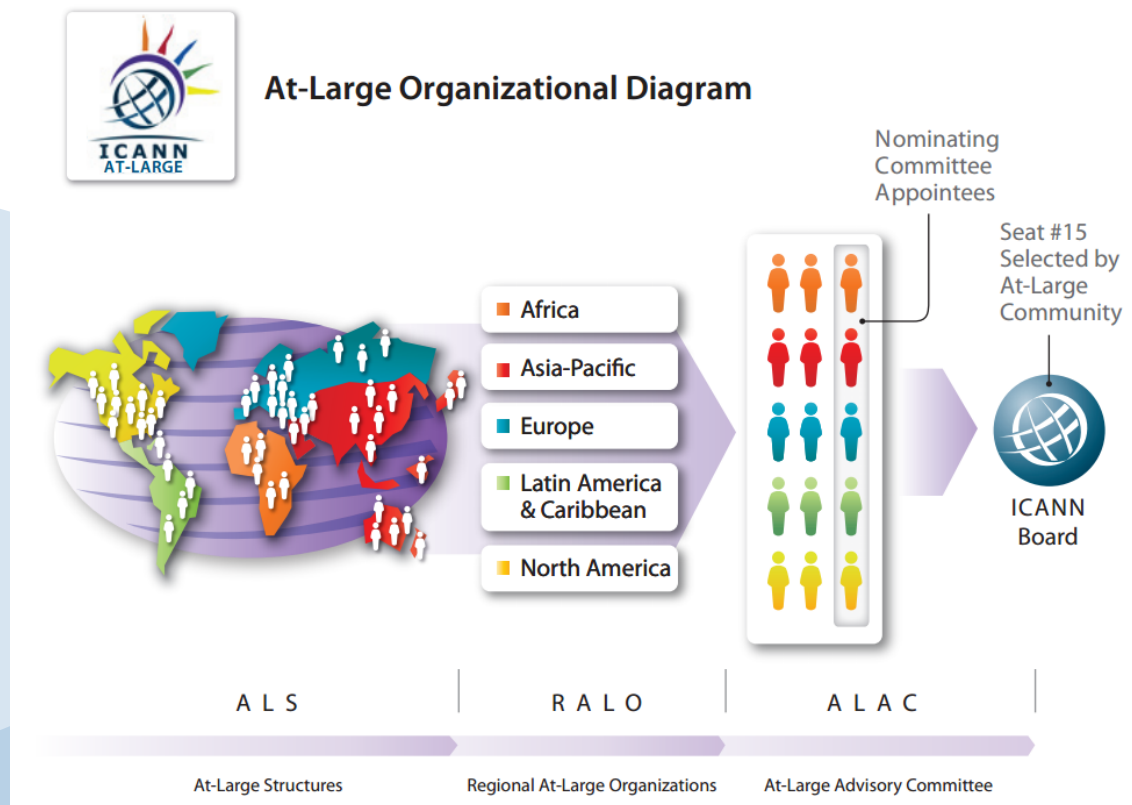
# Understanding At-Large

## Getting to know At-Large

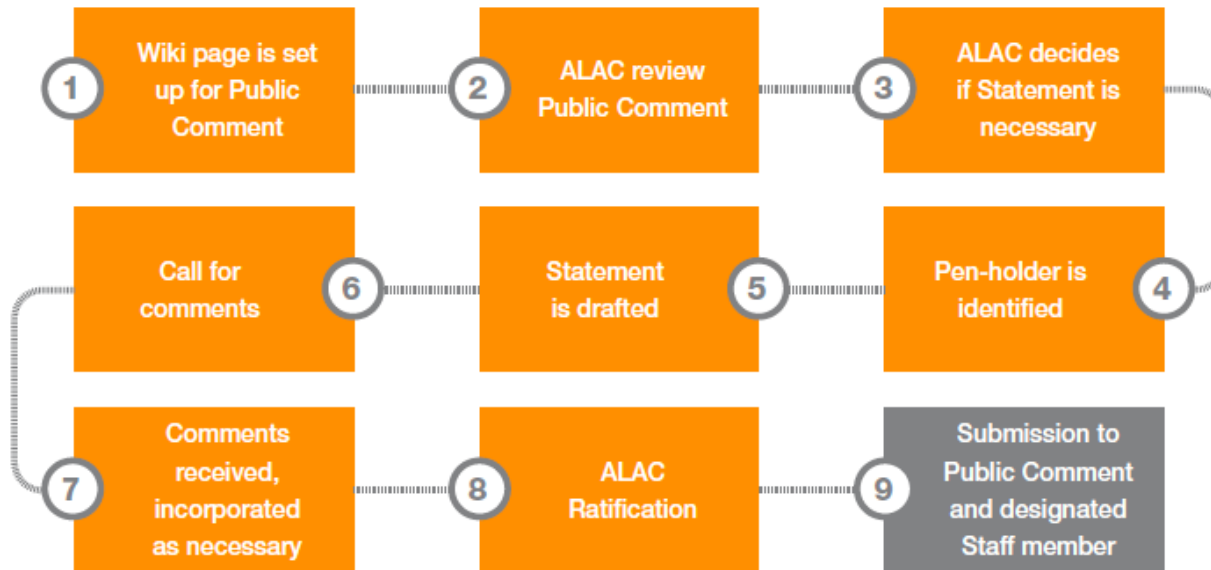
# Understanding At-Large

When one wants to become a part of the At Large community, there is a need to acquaint him/her with the work in which At Large is involved in, the structure of At Large and its processes.

- What is At-Large?



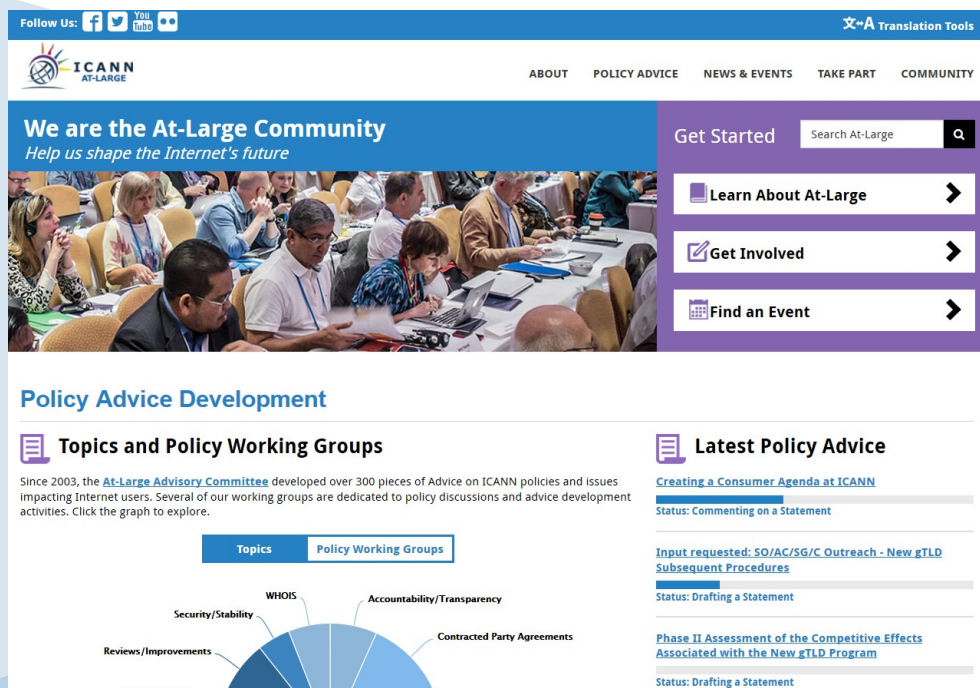
- What does At-Large Do?
  - Policy Advice, Policy Development, Organisation Building





# Understanding At-Large cont'd

- Resources for you to learn about At-Large at your own pace
  - [At-Large Website](#)
  - Beginners Guides
  - ICANN Learn
  - Ebooks
  - At Large YouTube Channel



The screenshot shows the ICANN At-Large website. At the top, there are social media icons for Facebook, Twitter, YouTube, and LinkedIn, along with a 'Follow Us' label. The main navigation bar includes 'ABOUT', 'POLICY ADVICE', 'NEWS & EVENTS', 'TAKE PART', and 'COMMUNITY'. A search bar is located in the top right corner. The main content area features a large banner with the text 'We are the At-Large Community' and 'Help us shape the Internet's future', accompanied by a photo of a meeting. Below the banner, there are three buttons: 'Learn About At-Large', 'Get Involved', and 'Find an Event'. The 'Policy Advice Development' section is highlighted, showing 'Topics and Policy Working Groups' and 'Latest Policy Advice'. A pie chart is visible under 'Topics and Policy Working Groups', with segments for 'Security/Stability', 'Reviews/Improvements', 'Public Interest', 'WHOIS', 'Accountability/Transparency', and 'Contracted Party Agreements'. The 'Latest Policy Advice' section lists three items: 'Creating a Consumer Agenda at ICANN', 'Input requested: SO/AC/SG/C Outreach - New gTLD Subsequent Procedures', and 'Phase II Assessment of the Competitive Effects Associated with the New gTLD Program'.

# Joining At-Large

## Becoming part of the community

Becoming a member of the At-Large community is easy, free and open to organisations/ groups and Individuals from all geographical regions.

For organisations, there is an online form available in multiple languages for organisations to become accredited At-Large Structures in

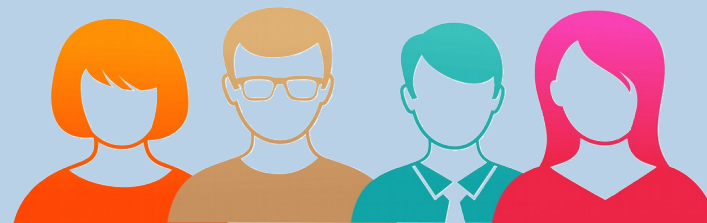
[English](#) ♦ [Français](#) ♦ [Español](#) ♦ [Português](#) ♦ [Русский](#) ♦     ♦ [العربية](#)

[English](#) [العربية](#) [Español](#) [Français](#) [Português](#) [Русский](#) [中文](#)

## Solicitud para la designación de "Estructura At-Large" (ALS)

Para acceder a información sobre el proceso de presentación de solicitudes, haga clic [AQUÍ](#).

Información de contacto de la organización	
* a. Nombre oficial de la organización	<input type="text"/>
a1. Nombre oficial de la organización en inglés (si existe)	<input type="text"/>
a2. Nombre oficial de la organización en idioma distinto del inglés (si existe)	<input type="text"/>
a3. Acrónimo que representa al nombre de la organización (si existe)	<input type="text"/>
b. Wiki de la organización	<input type="text"/>



Credit:cliparts.co

## Individual Membership

An individual can become a member of the At-Large community by;

1. Becoming a member of an At-Large structure (ALS)
2. Registering your organisation to become an ALS.
3. Joining your Regional At-Large Organisation(RALO) as an individual member. However, this is only available in certain regions ([APRALO](#), [NARALO](#) and [EURALO](#))

For information on joining please visit our website

<https://atlarge.icann.org/get-involved/join-us>



Credit: emaze.com



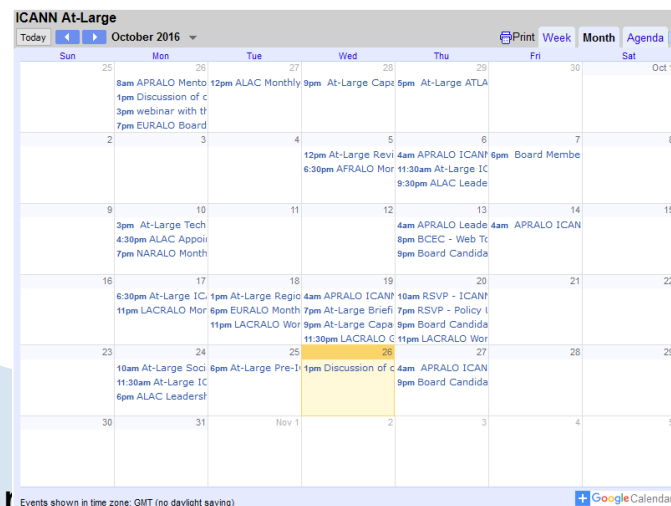
# Engaging in At-Large

## Immersing yourself

There are various ways to be involved in the At-Large activities that allows different end users the flexibility to be active at different levels in different time zones.

At-Large activities are promoted and announced via

- At-Large mailing lists
- Social media channels
- At Large Calendar



The following are the online activities that one can participate in;

- RALO and ALAC monthly calls and online discussions (mailing lists)
- At-Large Working groups which also have monthly calls and online discussions

At Large also recognizes the importance of collaboration and the need to facilitate collaboration across different countries, continents and time zones. There are number of communication and collaboration tools that can be used:

- Adobe connect (web conferencing)
- Adigo (Audio channel)
- At-Large calendar
- Instant messaging (i.e. Skype)
- At-Large wiki

The At-Large community also hold face to face meetings during the three annual public ICANN meetings. These meetings are rotated among the 5 different regions of the world (Africa, Europe, Asia, Latin America/Caribbean and North America).

Funding opportunities are available through programmes such as;

- ICANN Fellowship Program
- NextGen Program - Targets university/ college students



# Further Engagement Leadership in At-Large



With further participation in At-Large activities, Working Groups and Committees, there are opportunities to assume positions in various parts of At Large namely:

- At-Large working groups
- Regional At-Large Organizations (RALOs)
- At-Large Advisory Committee (ALAC)
- Board of Directors
- and various adhoc committees.

To learn more about these leadership positions, please go to the wiki workspace of [ALAC and RALO elections, selections, and appointments](#).

And...be sure to help others be involved in At-Large! :-)



Website : <https://atlarge.icann.org>

Email : [staff@atlarge.icann.org](mailto:staff@atlarge.icann.org)



[twitter.com/icannatlarge](https://twitter.com/icannatlarge)



[flickr.com/photos/icannatlarge](https://www.flickr.com/photos/icannatlarge)



[facebook.com/icannatlarge](https://www.facebook.com/icannatlarge)



[youtube.com/user/icannatlarge](https://www.youtube.com/user/icannatlarge)

# QUESTIONS???