



ICANN At-Large Onboarding

Dev Anand Teelucksingh | Isaac Maposa | Beran Gillen
Community Onboarding Program |
3 November 2016

About Onboarding

**The 4 stages of
Onboarding**

**Further
Engagement**

Conclusion

Questions??

What is Onboarding?

- Assimilation of new community members and empowering them with the right tools and knowledge to ACTIVELY participate.
- Participants and community members of ICANN get involved through different MEANS i.e. The Fellowship program, The Nextgen program, professional affiliation, National/ Regional activities as well as through Global events.
- The community onboarding program should cater for everyone regardless of the STAGE one joins the ICANN community from whether as a complete newcomer or someone a bit more read in.

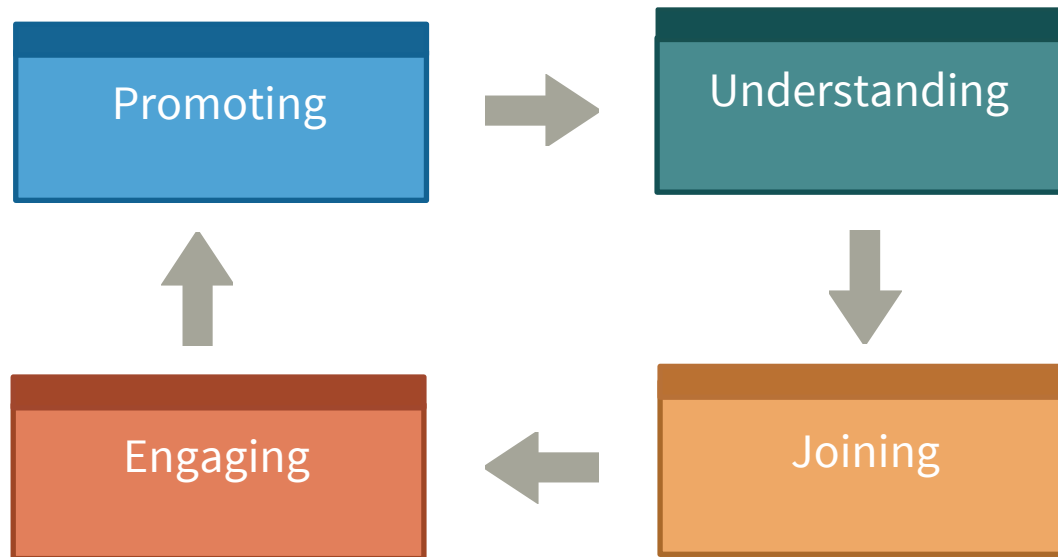
What is Onboarding cont'd?



Being one of the most diverse committees/ organisations within ICANN, At Large boasts of a lot of resources available to the newcomer ranging from a brand new website, to a community wiki, ebooks, social media channels, monthly calls and working groups. Each of these repositories offers different levels of information for the newcomer.

At- Large Community Onboarding Program

In presenting the proposed At Large Community Onboarding Program, we will present the At Large Community journey in stages. Each stage will signify a point that a newcomer will go through in the process of discovering, learning about, joining and getting involved in the At Large community.



Promoting



Understanding



Joining



Engaging

- Promoting At- Large
 - Target participants for At Large
 - How each type of participant can be involved in At Large
 - What should draw them to this unique and diverse community
- Understanding At-Large
 - How the community operates
 - Information on community activities
 - Community organisational structure
- Joining At-Large
 - Various ways to join the At-Large community through various mediums
- Engaging in At-Large
 - Active participation & involvement stage leading to further involvement such as leadership positions.

Promoting At-Large

Who can be part of At-Large?

Promoting At-Large



At-Large is the most diverse community within ICANN in that it welcomes different people from different backgrounds regardless of professional affiliation, geographical region, special interests etc. All one has to do to join At-Large is be an End User of the Internet.

Promoting At-Large cont'd

If you are a person or belong to a group that follows, cares and is enthusiastic about Internet Governance issues (such as Digital Divide, Net Neutrality, Privacy and Security) as they affect end users, then your place is within the At Large Community.

Examples of these groups include:

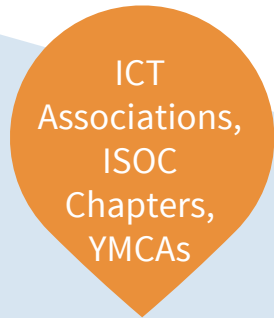
Technical Groups

Academia

Civil Society

Consumer Groups

Enthusiasts



- At-Large welcomes different people from different backgrounds all with one interest, HOW THE INTERNET AFFECTS THEM.

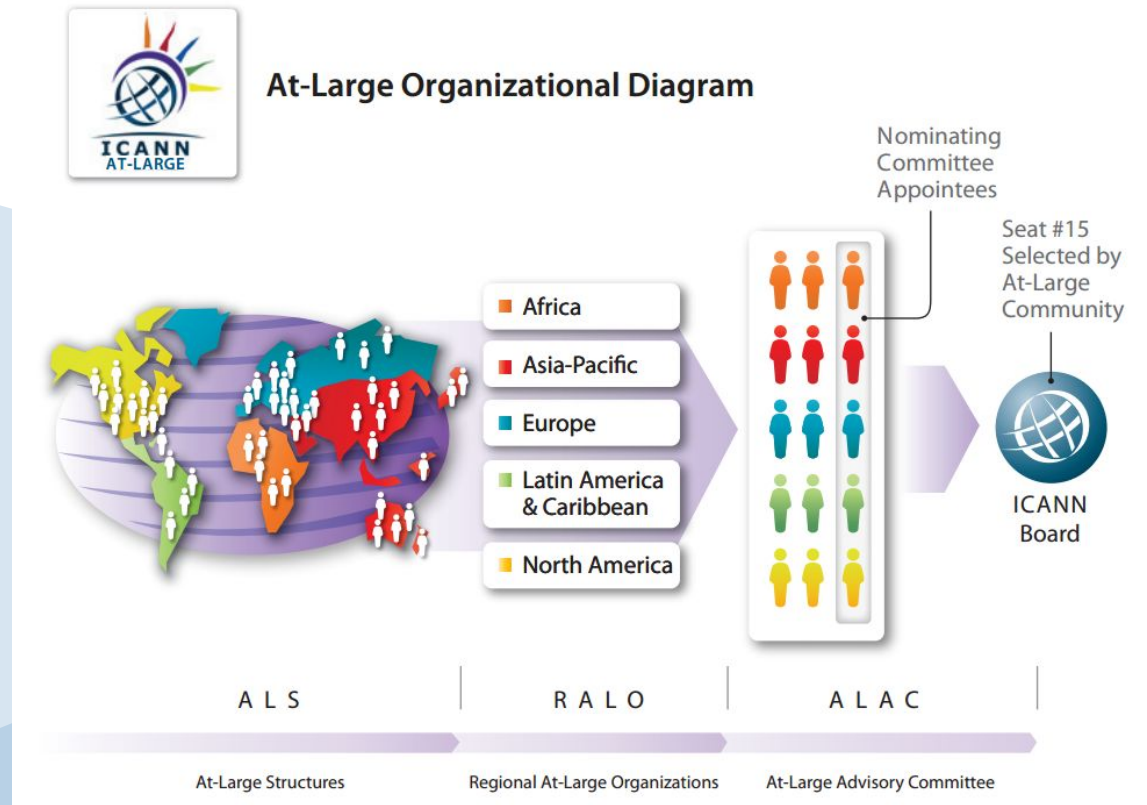
Understanding At-Large

Getting to know At-Large

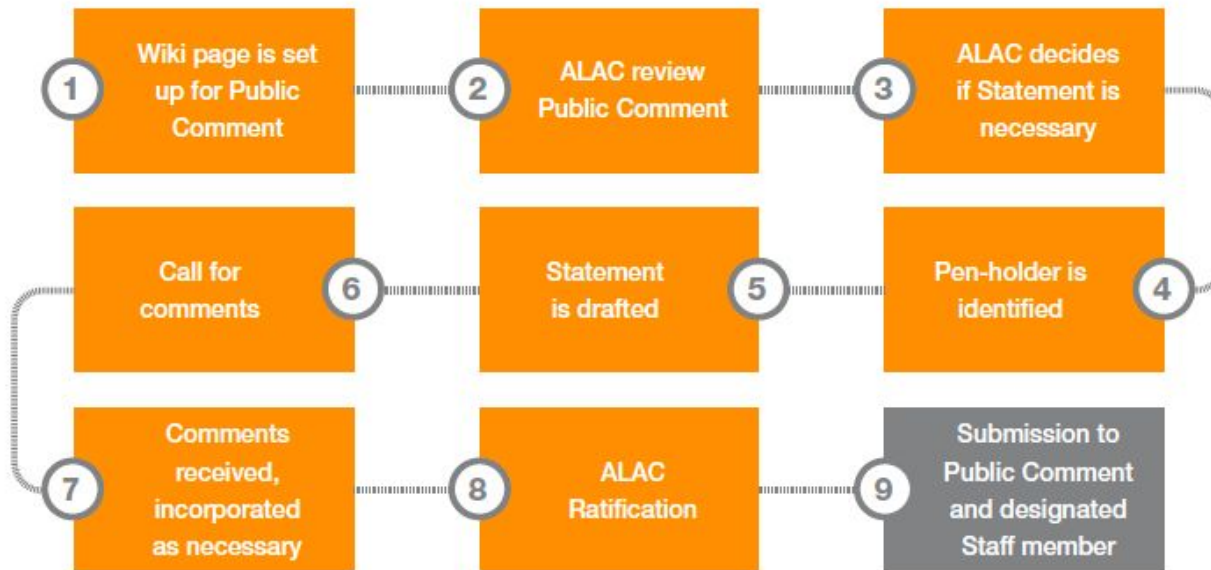
Understanding At-Large

When one wants to become a part of the At Large community, there is a need to acquaint him/her with the work in which At Large is involved in, the structure of At Large and its processes.

- What is At-Large?

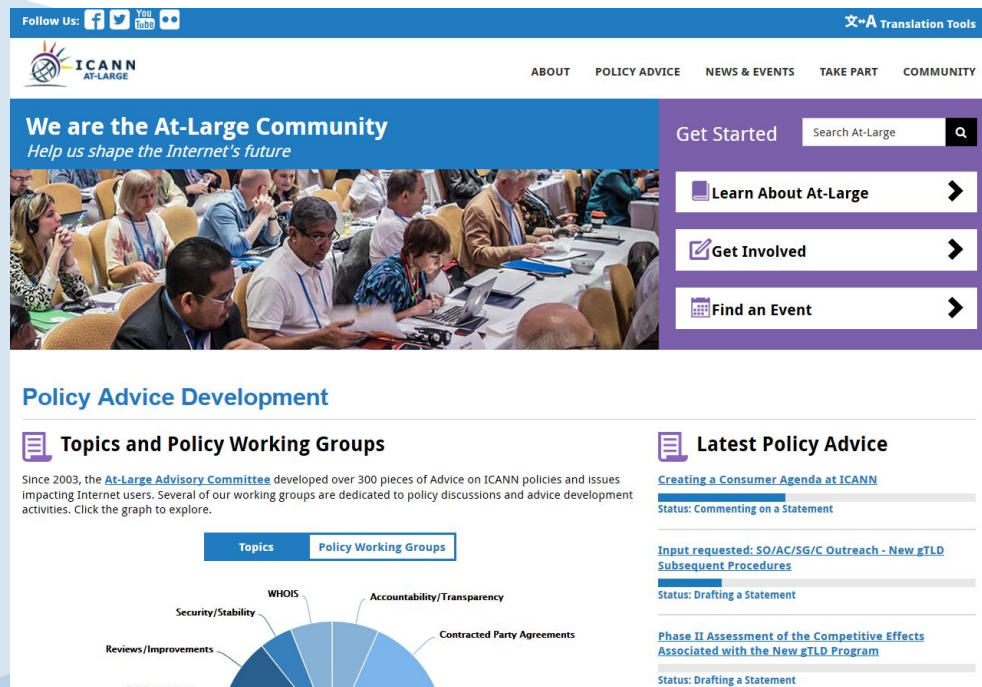


- What does At-Large Do?
 - Policy Advice, Policy Development, Organisation Building



Understanding At-Large cont'd

- Resources for you to learn about At-Large at your own pace
 - [At-Large Website](#)
 - Beginners Guides
 - ICANN Learn
 - Ebooks
 - At Large YouTube Channel



The screenshot shows the ICANN At-Large website interface. At the top, there are social media links for Facebook, Twitter, YouTube, and LinkedIn, along with a text-to-speech icon and 'A-A translation Tools'. The main navigation menu includes ABOUT, POLICY ADVICE, NEWS & EVENTS, TAKE PART, and COMMUNITY. A prominent banner reads 'We are the At-Large Community' with the tagline 'Help us shape the Internet's future' and a photo of a meeting. To the right, a 'Get Started' section features a search bar and three buttons: 'Learn About At-Large', 'Get Involved', and 'Find an Event'. Below this, the 'Policy Advice Development' section is visible, including a 'Topics and Policy Working Groups' area with a pie chart and a 'Latest Policy Advice' list with three items.

Policy Advice Development

Topics and Policy Working Groups

Since 2003, the [At-Large Advisory Committee](#) developed over 300 pieces of Advice on ICANN policies and issues impacting Internet users. Several of our working groups are dedicated to policy discussions and advice development activities. Click the graph to explore.

Latest Policy Advice

- [Creating a Consumer Agenda at ICANN](#)
Status: Commenting on a Statement
- [Input requested: SO/AC/SG/C Outreach - New gTLD Subsequent Procedures](#)
Status: Drafting a Statement
- [Phase II Assessment of the Competitive Effects Associated with the New gTLD Program](#)
Status: Drafting a Statement

Joining At-Large

Becoming part of the community

Becoming a member of the At-Large community is easy, free and open to organisations/ groups and Individuals from all geographical regions.

For organisations, there is an online form available in multiple languages for organisations to become accredited At-Large Structures in

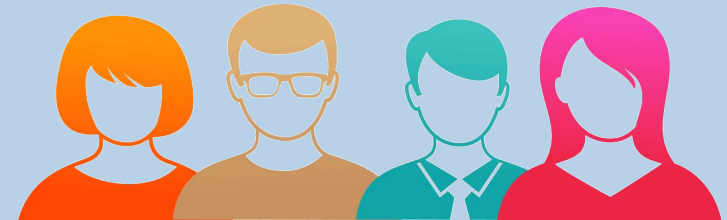
[English](#) ♦ [Français](#) ♦ [Español](#) ♦ [Português](#) ♦ [Русский](#) ♦ [简体中文](#) ♦ [العربية](#)

[English](#) [العربية](#) [Español](#) [Français](#) [Português](#) [Русский](#) [中文](#)

Solicitud para la designación de "Estructura At-Large" (ALS)

Para acceder a información sobre el proceso de presentación de solicitudes, haga clic [AQUÍ](#).

Información de contacto de la organización	
* a. Nombre oficial de la organización	<input type="text"/>
a1. Nombre oficial de la organización en inglés (si existe)	<input type="text"/>
a2. Nombre oficial de la organización en idioma distinto del inglés (si existe)	<input type="text"/>
a3. Acrónimo que representa al nombre de la organización (si existe)	<input type="text"/>
b. Wiki de la organización	<input type="text"/>



Credit:cliparts.co

Individual Membership

An individual can become a member of the At-Large community by;

1. Becoming a member of an At-Large structure (ALS)
2. Registering your organisation to become an ALS.
3. Joining your Regional At-Large Organisation(RALO) as an individual member. However, this is only available in certain regions ([APRALO](#), [NARALO](#) and [EURALO](#))



Credit: emaze.com

For information on joining please visit our website

<https://atlarge.icann.org/get-involved/join-us>

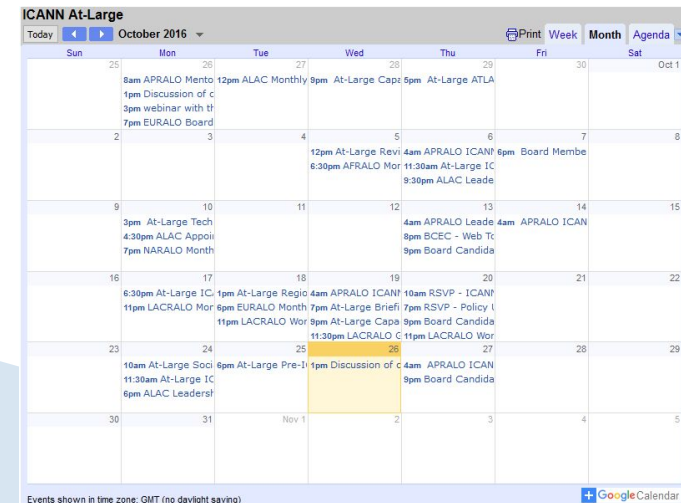
Engaging in At-Large

Immersing yourself

There are various ways to be involved in the At-Large activities that allows different end users the flexibility to be active at different levels in different time zones.

At-Large activities are promoted and announced via

- At-Large mailing lists
- Social media channels
- At Large Calendar



The screenshot shows a calendar interface for 'ICANN At-Large' for the month of October 2016. The calendar is displayed in a grid format with columns for days of the week (Sun to Sat) and rows for dates. Events are listed in the cells corresponding to the dates. For example, on Sunday, October 25th, there are events at 8am (APRALO Mento), 1pm (Discussion of c), 3pm (webinar with tl), and 7pm (EURALO Board). On Tuesday, October 27th, there is an event at 12pm (ALAC Monthly). On Wednesday, October 28th, there is an event at 9pm (At-Large Cape). On Thursday, October 29th, there is an event at 6pm (At-Large ATLA). The calendar also includes navigation options like 'Today', 'Print', 'Week', 'Month', and 'Agenda'.

The following are the online activities that one can participate in;

- RALO and ALAC monthly calls and online discussions (mailing lists)
- At-Large Working groups which also have monthly calls and online discussions

At Large also recognizes the importance of collaboration and the need to facilitate collaboration across different countries, continents and time zones. There are number of communication and collaboration tools that can be used:

- Adobe connect (web conferencing)
- Adigo (Audio channel)
- At-Large calendar
- Instant messaging (i.e. Skype)
- At-Large wiki

Besides the Online activities, the At-Large community also hold face to face meetings during the three global public ICANN meetings held every year. These meetings are rotated among the 5 different regions of the world (Africa, Europe, Asia, Latin America and the Caribbean and North America).

For individuals who wish to attend these meetings in person but require financial assistance, funding opportunities are available through programmes such as;

- ICANN Fellowship Program
- NextGen Program - Targets university/ college students

Further Engagement Leadership in At-Large

With further participation in At-Large activities, Working Groups and Committees, there are opportunities to assume positions in various parts of At Large namely:

- At-Large working groups
- Regional At-Large Organizations (RALOs)
- At-Large Advisory Committee (ALAC)
- Board of Directors
- and various adhoc committees.

To learn more about these leadership positions, please go to the wiki workspace of [ALAC and RALO elections, selections, and appointments](#).

And...be sure to help others be involved in At-Large! :-)



Website : <https://atlarge.icann.org>

Email : staff@atlarge.icann.org



twitter.com/icannatlarge



[flickr.com/photos/icannatlarge](https://www.flickr.com/photos/icannatlarge)



[facebook.com/icannatlarge](https://www.facebook.com/icannatlarge)



[youtube.com/user/icannatlarge](https://www.youtube.com/user/icannatlarge)

QUESTIONS???