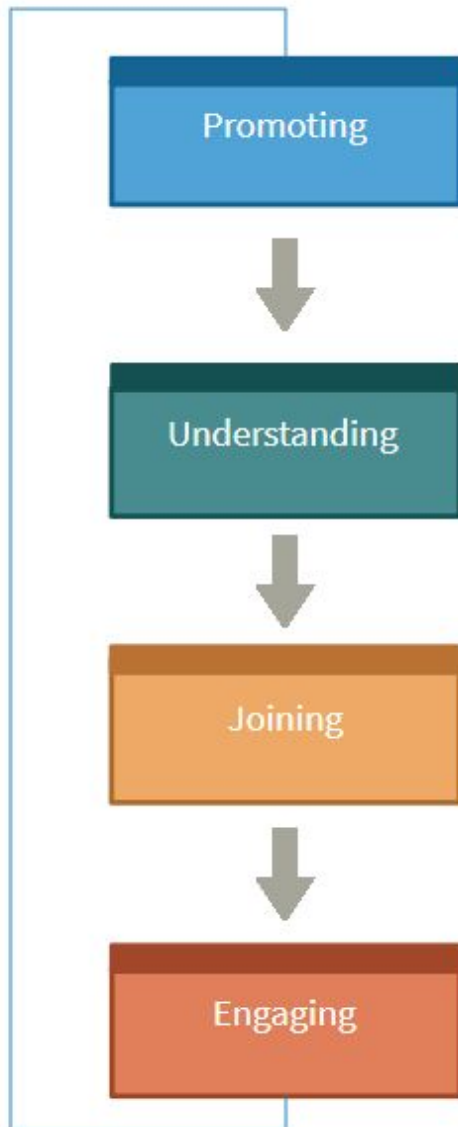




# ICANN At-Large Onboarding

Dev Anand Teelucksingh | Isaac Maposa | Beran Gillen  
Community Onboarding Program | 25 June 2017



## Promoting At- Large

- Target participants for At Large
- How each type of participant can be involved in At Large
- What should draw them to this unique and diverse community

## Understanding At- Large

- How the community operates
- Information on community activities
- Community organisational structure

## Joining At- Large

- Various ways to join the At-Large community through various mediums

## Engaging in At-Large

- Active participation & involvement stage leading to further involvement such as leadership positions.

- DNS, Domain Names?
- TLDs, ccTLD, gTLD?
- IANA , post IANA Stewardship ?

## **What do all of these things mean, What are the relationships, How are they interconnected?**

Many end users, Academia, Civil Society, Consumer Groups, Enthusiasts, members of our existing At-Large Structures that are part of the ICANN At-Large Community:

- don't have an understanding of what these terms means.
- may have misconceptions of what these terms means.

Hence

- No understanding or appreciation of the issues involved ;
- The attitude 'it does not affect me so why should I care?'

We saw the need to develop a series of ordered lessons/presentations that:

- can form a toolkit for At-Large Community members in educating the wider public
- At-Large Structure (ALS) representatives can use to educate members in their organisations in getting persons in their organisation to care about ICANN issues and become more involved in the At-Large Community.
- can be available online and offline for ease of use and access.

We've worked with members of the At-Large Outreach and Engagement SC to develop a series of ordered lessons/presentations on:

- [Start here](#) - presents tailored set of topics/slides depending on the audience
- [What is the DNS and who coordinates all of this stuff?](#) - Introduce the concepts of the DNS and introduce entities like ICANN the corporation, and ICANN the community.
- [Policy challenges/issues in the DNS](#) - slidedeck to help new or potential At-Large Community members to learn about the various ICANN policy issues of interest to end users, why end users should care about these issues, and how as part of the ICANN At-Large Community they can become involved on these issues.
- [Introduction to the ICANN At-Large Community](#) - slidedeck about the At-Large Community, its key activities, and how to engage with the At-Large Community
- **Navigating At-Large** - for existing At-Large Community members, how to find relevant information and participate in At-Large activities

## Landing Page



Welcome to ICANN At-Large community, the community of individual internet users of the Internet Corporation for Assigned Names and Numbers (ICANN). This guide is designed to provide you with the tools and resources you need to be an effective participant in at-large and in ICANN's bottom-up policy-making process. Whether you are new to ICANN, Already in one of the ICANN communities or already a member of At- Large.

1

New to ICANN  
[Click here](#)

2

Already a member  
of At - Large  
[Click here](#)

3

A member of  
another ICANN  
community  
[Click here](#)

# What is the DNS?

1

What is the Domain Name System?

2

How does the Domain Name System Work?

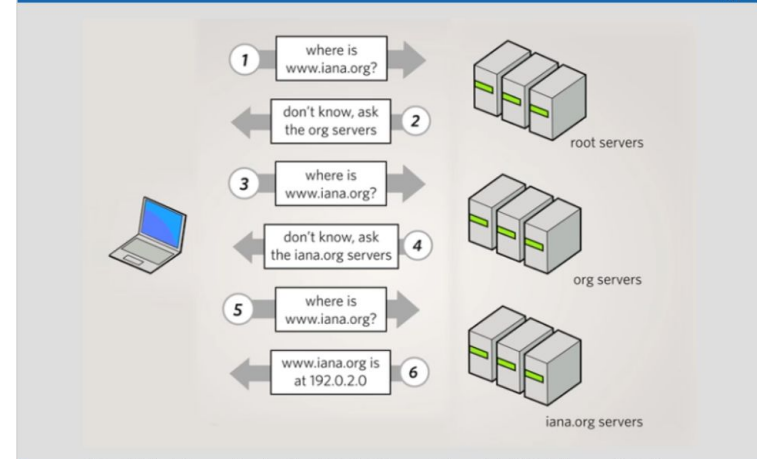
3

Stakeholders in the Domain Name System.

4

Other Stakeholders

## The domain name lookup process



## How the Domain System work?

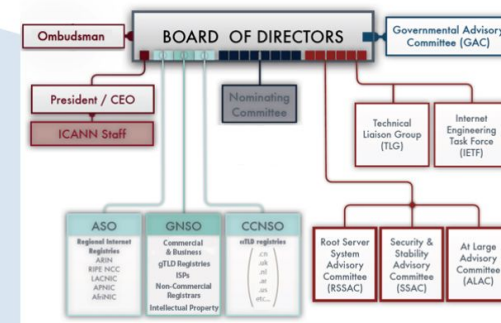
What happens when I type [www.example.com](http://www.example.com) in my browser?

The simplified domain name lookup process;

1. Your Internet Service Provider's (ISP's) DNS server queries the "root servers" for the information. There are 13 root servers which have copies distributed around the world.
2. The root server will refer the DNS server to the ".com" Top Level Domain (TLD) nameservers .
3. The .com TLD server will refer us to the DNS servers responsible or authoritative for "example.com"
4. The DNS servers authoritative for example.com will give us the IP address for [www.example.com](http://www.example.com)"
5. The ISP DNS server tells your browser the IP address of [www.example.com](http://www.example.com) and saves this reply in case another user on the ISP's asks the same question.
6. Your browser asks the IP address to download a webpage

## The ICANN Community

ICANN is made up of different communities , representing different interests on the Internet and all contribute to any final decisions that ICANN makes.



# Policy Issues in the DNS

## Key Policy Issues of the At-Large Community

<a href="#">WHOIS / Registration Directory Services</a>	<a href="#">IANA Functions &amp; Stewardship Transition</a>	<a href="#">Contracted Party Agreements</a>
<a href="#">Internationalized Domain Names</a>	<a href="#">New Generic Top Level Domains (gTLDs)</a>	<a href="#">Public Interest</a>
<a href="#">Internet Governance</a>	<a href="#">ICANN Policy Processes</a>	<a href="#">Accountability and Transparency of ICANN</a>
<a href="#">ICANN Operations / Finances</a>	<a href="#">Reviews at ICANN</a>	<a href="#">Engagement &amp; Outreach</a>

For more information about ICANN At-Large, visit <http://atlarge.icann.org/>

## WHOIS / Registration Directory Services

### Policy Summary

- Every year, millions of individuals, businesses, organizations and governments register domain names. Each one must provide identifying and contact information which may include: name, address, email, phone number, and administrative and technical contacts.
- This information is often referred to as “WHOIS data.”
- WHOIS service is not a single, centrally-operated database. Instead, the data is managed by independent entities known as registrars and registries. Any entity that wants to become a registrar must earn ICANN accreditation.
- WHOIS data is key for fixing system problems, maintaining Internet stability, and enhancing the accountability of registrants.



[Back to List of Key Policy Issues of At-Large](#)

| 5

## WHOIS / Registration Directory Services

### Why should end users care?

- The “one-size-fits-all” disclosure of identifying information may also expose registrants, especially individual registrants, to potential spam, phishing, and identity theft.
- Due to its implication in privacy, data protection, policing, security, and malicious use and abuse, WHOIS matters to end users, especially individual registrants.

[Back to List of Key Policy Issues of At-Large](#)

| 6

## WHOIS / Registration Directory Services

### At-Large Involvement

- See past comments on WHOIS by the ALAC <https://atlarge.icann.org/topics/whois>
- The Registration Issues At-Large Working Group where you can find At-Large Community members interested in WHOIS / Registration Directory Services : [https://atlarge.icann.org/working\\_groups/registration-issues](https://atlarge.icann.org/working_groups/registration-issues)
- ICANN’s Whois site at <https://whois.icann.org/>

[Back to List of Key Policy Issues of At-Large](#)

| 7



## At-Large Community Organisational Structure

**NARALO**  
29 ALSes in 3 out of 8 countries

**EURALO** - 38 ALSes in 18 out of 78 countries

**APRALO**  
49 ALSes in 28 out of 74 countries

**LACRALO**  
53 ALSes in 21 out of 33 countries

**AFRALO**  
50 ALSes in 29 out of 55 countries

The At-Large Community of ALSes and individual members are organized into five **Regional At-Large Organisations (RALOs)** based on their geographic regions

Africa (AF)  
Asia Pacific (AP),  
Europe (EU),  
Latin America & Caribbean (LAC)  
North America (NA)

**At-Large Advisory Committee (ALAC) - 15 Members**

- 10 selected by RALOs to serve on the ALAC (2 from each RALO)
- 5 selected by Nom Com to serve on the ALAC (1 from each region)

Seat #15 on the ICANN Board is selected by the ALAC and the At-Large Community

## Key At-Large Community activities

The At-Large Community has the duty to understand, defend, and advocate for the interests of global Internet end users in ICANN activities.

To fulfill this duty, we focus on three areas of work:

- Comments on ICANN activities
- Policy Development
- Organisation Building

## At-Large Community Working Groups

There are several At-Large Community Working Groups that can match your interest, whether you are a member of the At-Large Community or an observer.

For those in, or involved with:

**Policy, Law and/or Internet Governance Interests**  
[ICANN Evolution](#) ; [IDN Policy](#) ; [New gTLDs](#) ; [Registration Issues](#) ; [Public Interest](#)

**Technical Interests**  
[Technical Issues](#) ; [Accessibility](#) ; [Technology](#)

**Civil Society**  
[Capacity Building](#) ; [Outreach & Engagement](#) ; [Social Media](#) ; [Captioning Project](#)

**Academia**  
[Capacity Building](#) ; [Accessibility](#)

## How to engage with At-Large

Given that most At-Large activities (Policy Advice Development, Policy development and Organisation building) are done online, the key first step to delving into the world of At Large is being able to receive notifications of when At Large activities are taking place.

At-Large activities are promoted and announced via

- Social media channels ([@icannatlarge](#), [/icannatlarge](#))
- At Large Calendar <https://atlarge.icann.org/calendar>
- At-Large Mailing lists <https://atlarge.icann.org/get-involved/mailling-lists>



## Thank You and Questions

Reach us at:

Email: [staff@atlarge.icann.org](mailto:staff@atlarge.icann.org)

Website: [atlarge.icann.org](http://atlarge.icann.org)



[twitter.com/icann\\_atlarge](https://twitter.com/icann_atlarge)



[gplus.to/icann](https://plus.google.com/icann)



[facebook.com/icann.atlarge](https://facebook.com/icann.atlarge)



[weibo.com/ICANNorg](https://weibo.com/ICANNorg)



[linkedin.com/group/icann-atlarge-2238621](https://linkedin.com/group/icann-atlarge-2238621)



[flickr.com/photos/icann](https://flickr.com/photos/icann)



[youtube.com/user/icannatlarge](https://youtube.com/user/icannatlarge)



[slideshare.net/icannpresentations](https://slideshare.net/icannpresentations)