



Research

David Conrad

The What

The Research Department is responsible for observing, assessing and improving the state of knowledge of the Internet's System of Unique Identifiers (ISoUI) in close collaboration with other ICANN departments and the community at large.

The How

This will be achieved through a range of activities including data collection and analysis, measurement of identifier system behaviors and performance, and cooperative outreach that emphasizes coordination, capability building, and knowledge transfer.

Identifier System
Data Collection
and Analysis

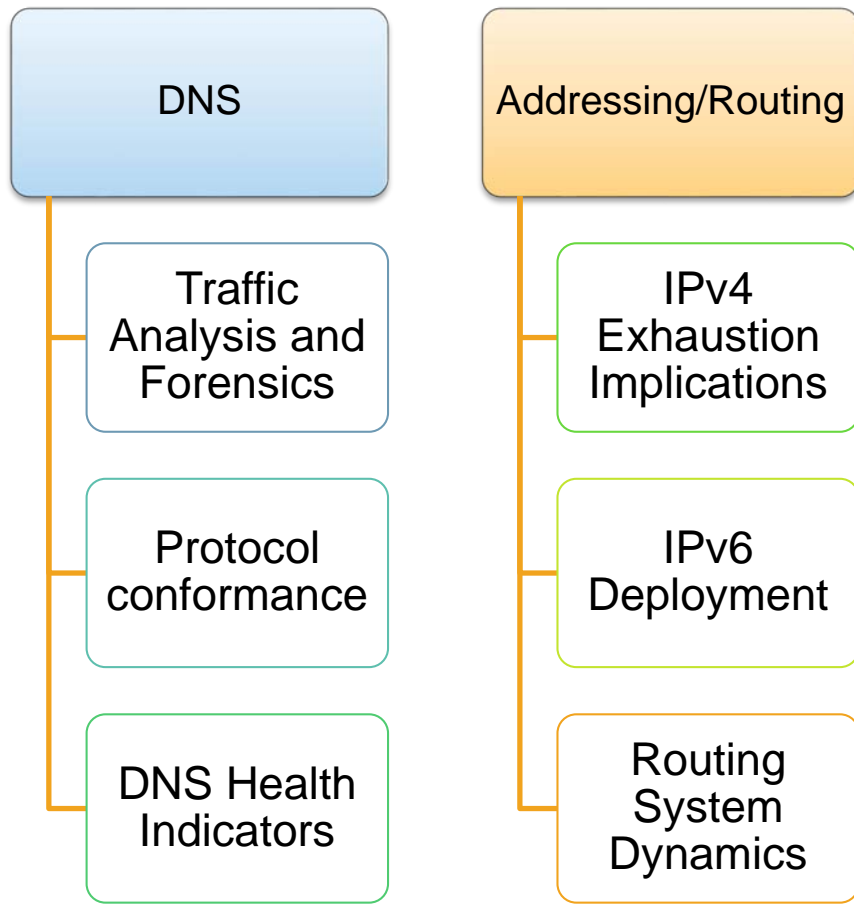
Collaboration,
Dissemination and
Outreach

Research

Technical
Resource Support

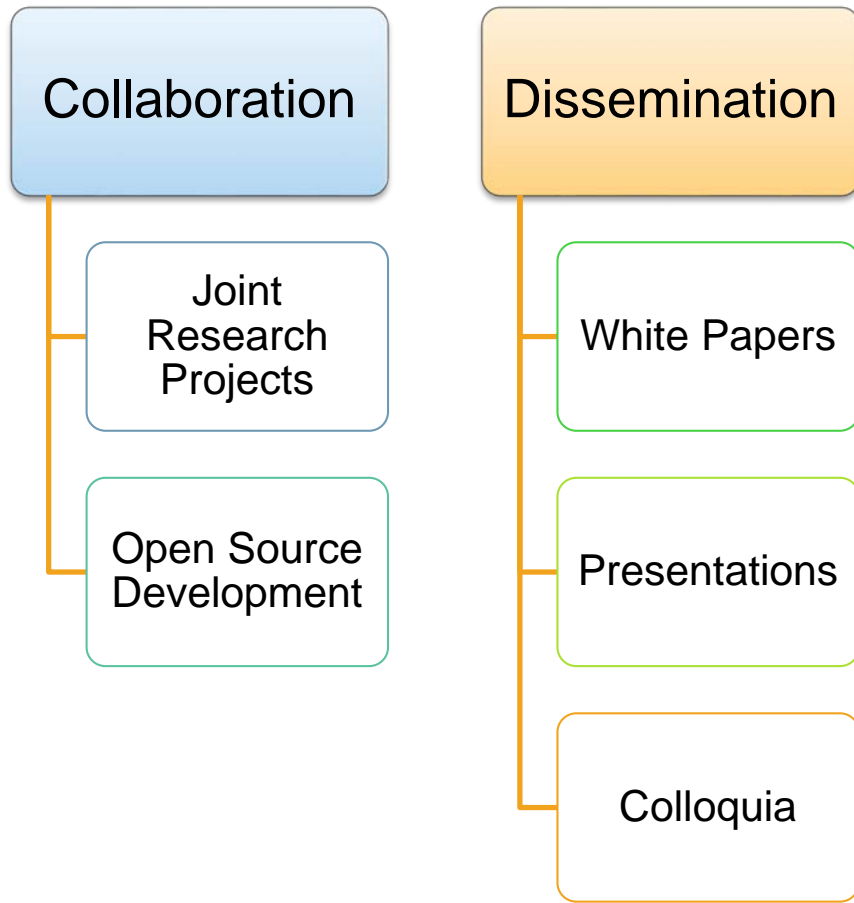
Capacity Building

Identifier Systems Data Collection and Analysis



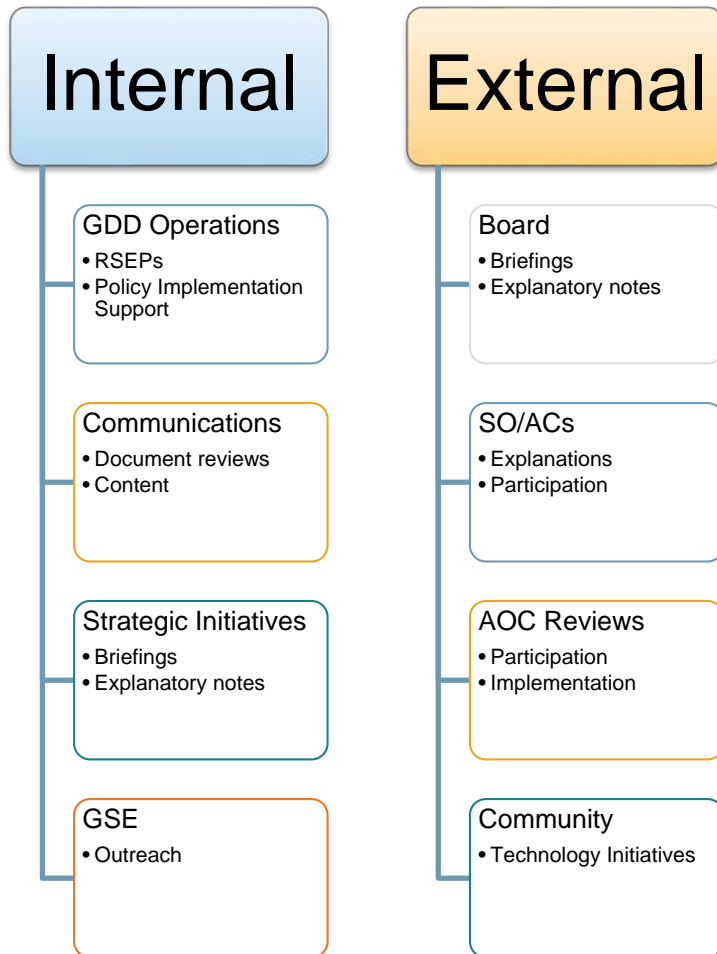
- Research aimed at how ISoUI are used and abused
- Aimed at increasing the state of knowledge regarding ISoUI

Collaboration and Dissemination



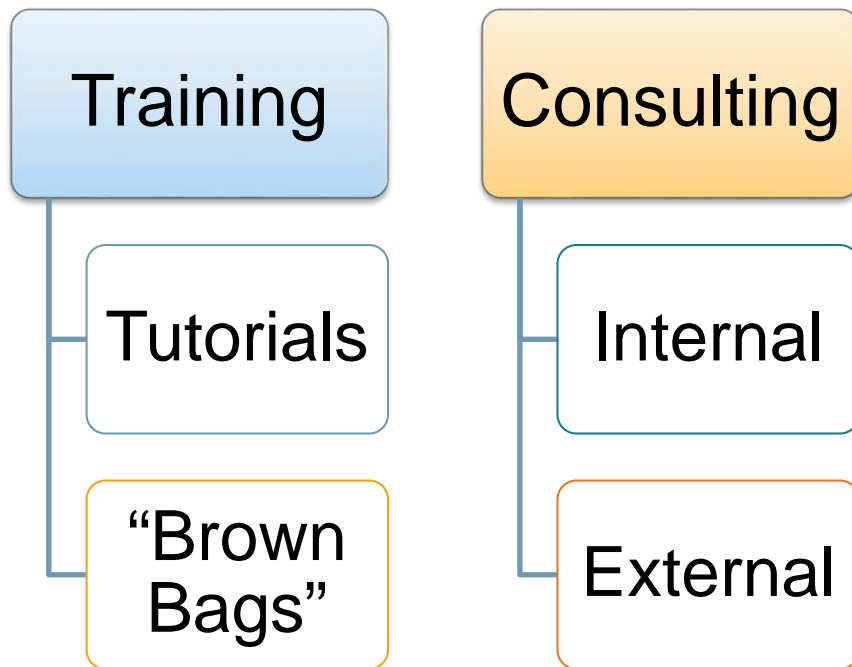
- Working with other researchers and organizations
- Exposing the knowledge we've gained to the world

Technical Resource Support



- Supporting internal efforts that involve ISoUI
- Providing information, explanations, and help relating to ISoUI
- Supporting community efforts that improve ISoUI

Capacity Building



- Improving the state of understanding of ISoUI