



Community Session - Next-Generation gTLD Registration Directory Service (RDS) to replace WHOIS

RDP PDP WG | ICANN56 | 27 June 2016

Agenda

1

Introduction to the
Next-Gen
RDS PDP

2

PDP Work Plan
and Near-Term
Opportunities for
Early Input

3

Next-Gen RDS:
Today's Gaps,
Tomorrow's Policy
Framework

4

Next Steps

5

To Learn More





Introduction to the Next-Gen RDS PDP Agenda Item #1

Introduction placeholder – 5 minutes

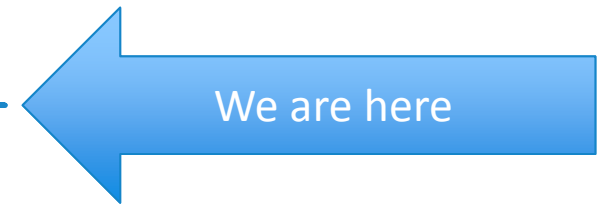
- ⦿ Charter purpose, phases, deliverables, decision points, WG leadership and membership

PDP Work Plan and Near-Term Opportunities for Early Input

Agenda Item #2

SUMMARY OF PHASE 1 WORK PLAN TASKS

- 1 • Form WG leadership team
- 2 • Review WG membership for gaps
- 3 • Establish WG meeting schedule
- 4 • Review, identify, & summarize key inputs to PDP
- 5 • Review PDP Rules of Engagement
- 6 • Develop PDP WG Work Plan
- 7 • Formal Early Outreach to ICANN SOs/ACs/SGs/Cs
- 8 • Develop Initial Possible Requirements List
- 9 • Informal Outreach on Initial Possible Requirements List
- 10 • Finalize Initial Possible Requirements List
- 11 • Decide how to reach consensus during deliberation
- 12 • Deliberate on possible Fundamental Requirements
- 13 • Expand Phase 1 Work Plan based on Task 12 outcome
- 14 • Outreach on Task 12 Draft Recommendations
- 15 • Deliberate on possible Cross-cutting Requirements for NG RDS or WHOIS
- 16 • Finalize Draft Recommendations
- 17 • Publish Initial Report for Phase 1 for Public Comment
- 18 • Review/analyze Public Comments
- 19 • Publish Final Report for Phase 1

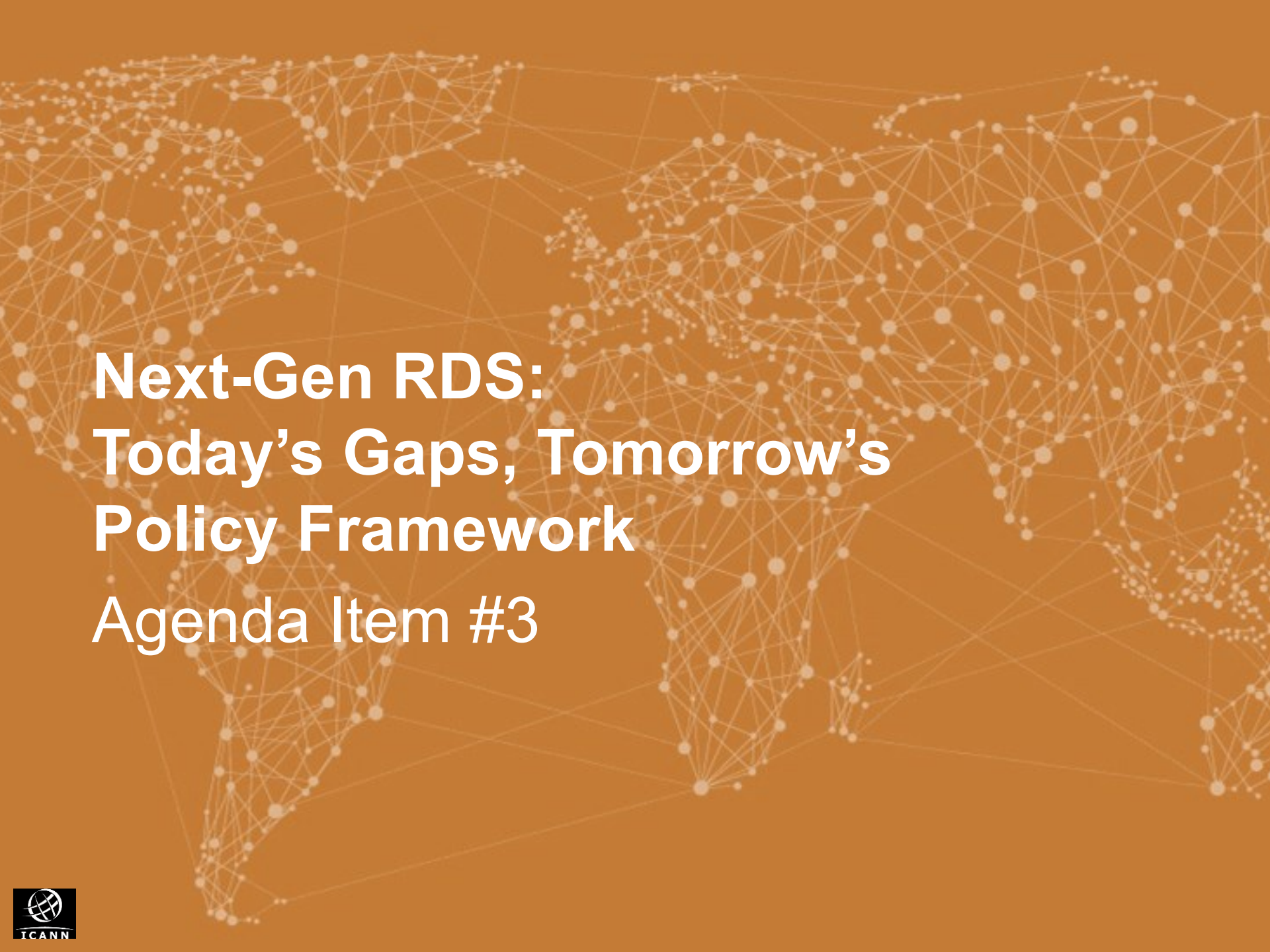


Work Plan posted at:
<https://community.icann.org/x/olxlAw>

Near-term Opportunities for Early Input

- Formal Early Outreach: 11 May – 16 June
 - ICANN SO/ACs & GNSO SG/Cs additions to Key Inputs
 - Responses now being reviewed by WG -- <https://community.icann.org/x/pYxlAw>
- Informal Outreach: 11 June – 28 June
 - ICANN SO/ACs & GNSO SG/Cs additions to Initial Possible Requirements List
 - Input requested at this session and WG's F2F session: Tuesday 28 June 08:00-10:30 -- <http://sched.co/7GqJ>
- Additional opportunities planned throughout Phase 1, including
 - Public Comment on proposed responses to Fundamental Questions and if a Next-Gen RDS is needed to replace WHOIS
 - Public Comment on Initial Phase 1 Report





**Next-Gen RDS:
Today's Gaps, Tomorrow's
Policy Framework**
Agenda Item #3

We are seeking YOUR input

- ⦿ This PDP WG is expected to establish consensus requirements for gTLD registration directory services, using them to determine if and why a next-generation RDS is needed, and then establish a new policy framework to support those requirements.
- ⦿ All community members that collect, store, provide, or use registration data using WHOIS today have an interest in the outcome of this PDP!
- ⦿ This session provides all interested parties with an opportunity to voice your concerns about WHOIS and needs for gTLD registration data, helping to augment and shape the possible requirements to be deliberated upon by this WG.

RDS PDP Charter Questions

Users and Purposes

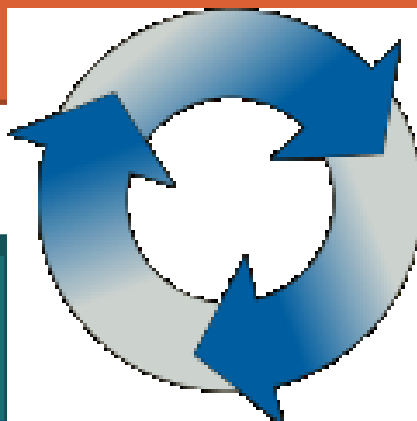
Who should have access to gTLD registration data and why (for what purposes)?

Registration Data Elements

What data should be collected, stored, and disclosed?

Privacy

What steps are needed to protect data and privacy?



Gated Access

What steps should be taken to control data access for each user/purpose?

Registration Data Accuracy

What steps should be taken to improve data accuracy?

Cross-Cutting Questions

Coexistence, Compliance, System Model, Cost, Benefits, Risks, Other?

Help us identify Possible Requirements

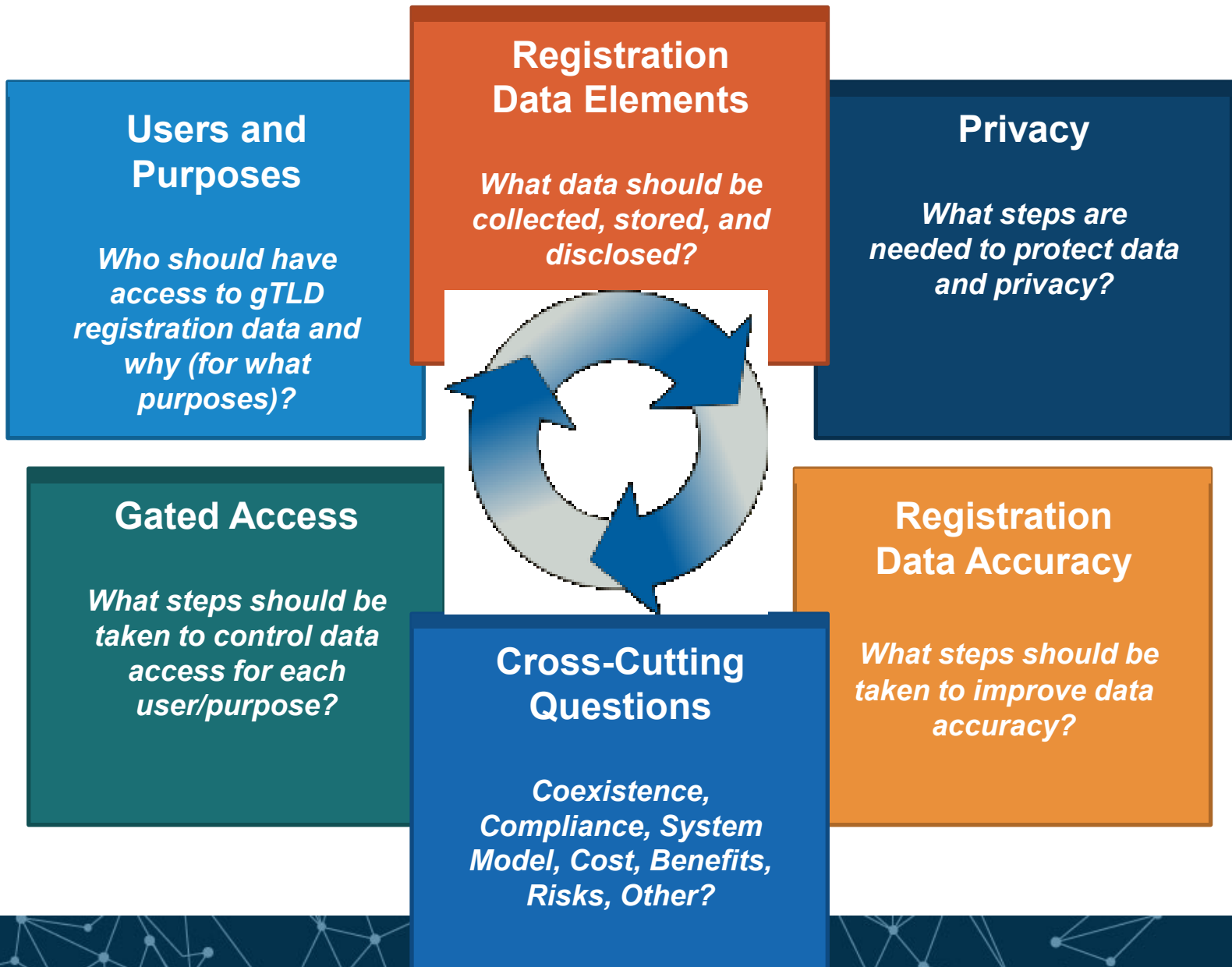
- ⦿ What *possible requirements* must a new policy framework for gTLD registration data and directory services address?
 - ⦿ Where does WHOIS fall short today?
 - ⦿ What requirements should a new RDS policy satisfy?
- ⦿ We are seeking a broad spectrum of real-life examples – please share your own views to inform WG deliberation!
- ⦿ WG members will offer examples to kick off discussion
- ⦿ To leave adequate time for many different examples, let's try to
 - ⦿ Spend no more than one minute sharing each example
 - ⦿ Avoid repetition and distribute examples across our charter questions, focusing on fundamental charter questions

What's a Possible Requirement?

- ⦿ Any deficiency in today's WHOIS policies or implementation that YOU would like to see corrected
 - ⦿ “WHOIS lacks mechanisms for access control, integrity, and confidentiality.” -- *RFC 3912, Privacy & Gated Access*
- ⦿ Any expectation that YOU may have for gTLD registration data or gTLD registration directory services
 - ⦿ “gTLD registration data [must be] collected, validated, and disclosed for permissible purposes only.” -- *EWG Report, Data Elements*
- ⦿ Any topic YOU want the gTLD RDS policy framework to address
 - ⦿ “There is a critical need for policy asserting the purpose of collecting and maintaining registration data.” -- *SAC051, User/Purpose*
 - ⦿ “Accuracy policies should apply to all registration data without regard to whether internationalized or ASCII data.” -- *SAC051, Data Accuracy*

These are just a few examples, taken from input documents

Offer your own suggestions!



Your opinion?

- ⦿ After this PDP WG considers those fundamental questions and deliberates on possible requirements that it may recommend, it must use them to try to reach consensus on this question:

Is a next-generation RDS needed to support YOUR gTLD registration data and directory service requirements?



Next Steps

Agenda Item #4

RDS PDP WG meeting on 28 June

- ⦿ The majority of this WG meeting is expected to focus upon using available inputs to develop a comprehensive and inclusive list of possible requirements for gTLD registration data and directory services
- ⦿ During this session, the WG will focus on making progress on near-term tasks outlined in our work plan
- ⦿ This meeting will be open to WG members, WG observers and guests

To learn more, visit:

<http://icann562016.sched.org/event/7GqJ>



To Learn More
Agenda Item #5

To prepare for this session

- ⦿ Place holder for links to
 - ⦿ WG wiki
 - ⦿ WG charter
 - ⦿ RDS tutorial
 - ⦿ Key input documents
 - ⦿ Draft 3 possible requirements list

To learn more



Thank You and Questions

Reach us at:

Email: gns0-rds-pdp-wg@icann.org

Website: <http://tinyurl.com/ng-rds>

