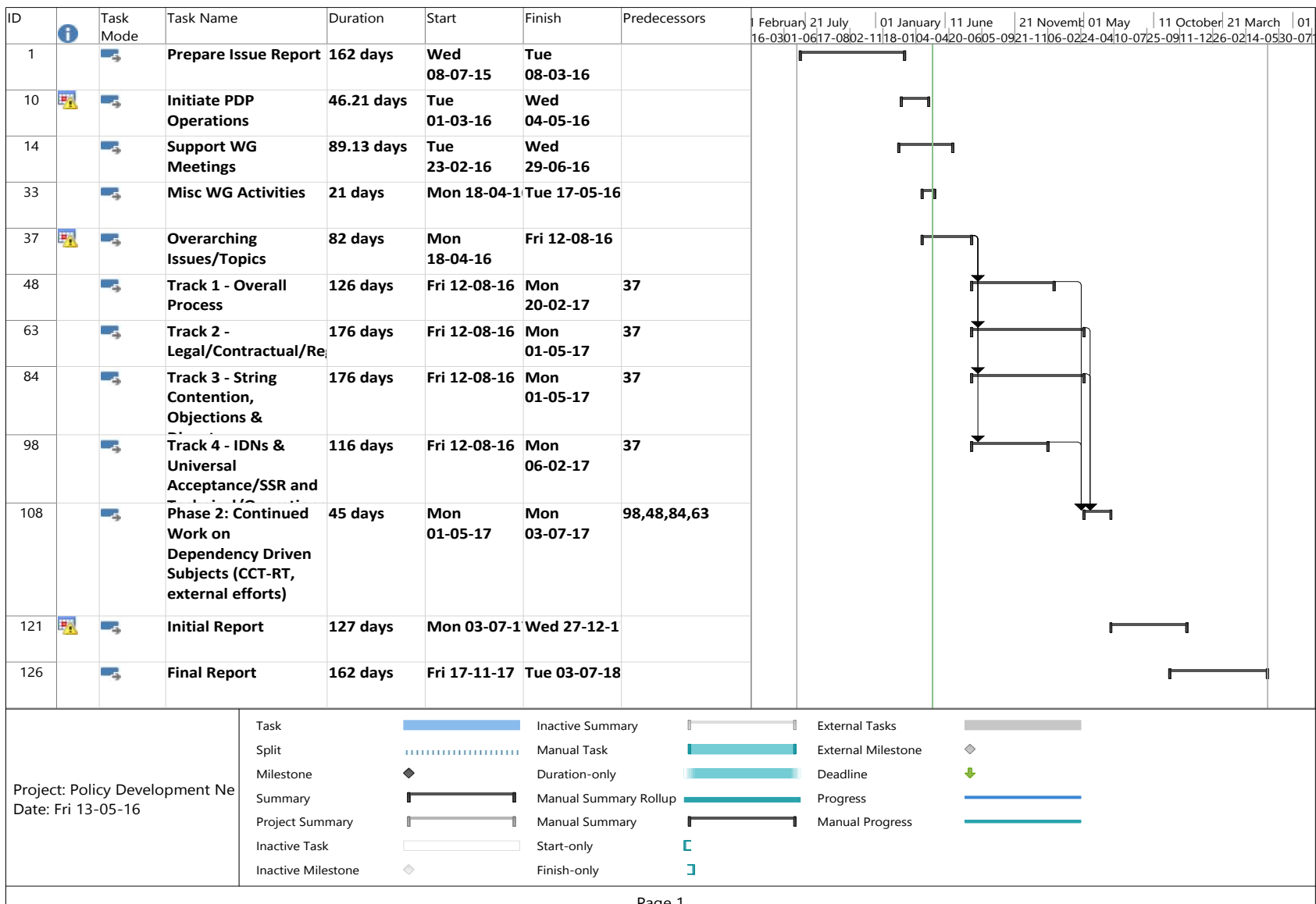




# New gTLD Subsequent Procedures Project Plan

# Condensed Project Plan



# Key Questions/Assumptions for Work Plan Design

1. Should the group divide into sub groups that run concurrently? If so, how many sub groups can be realistically run concurrently?
2. Are there any concerns or suggestions on the way the subjects are grouped and/or sequenced?
3. How should the inputs from the CCT-RT be taken into account by this WG (e.g., dependency for initiating versus concluding work on subjects of high interest)
4. Other questions/assumptions?