

WHAT IS THE EUROPEAN REGIONAL AT-LARGE ORGANIZATION (EURALO)?

The five RALOs unite our ALSes and independent members based on their geographic regions, namely Africa (AFRALO), Asia, Australasian and Pacific Islands (APRALO), Europe (EURALO), Latin America and the Caribbean Islands (LACRALO), and North America (NARALO). As the communication forum and coordination point, the RALOs promote and assure the participation of regional Internet user communities within ICANN activities as well as enhance knowledge and capacity building. RALOs also form various internal working groups for their ALSes and independent members in their regions to collaborate on issues ranging from policy development to Internet governance. Each RALO is governed by its own organizing documents, including a memorandum of understanding with ICANN. Playing a key role in ICANN's regional strategies, several RALOs partner with ICANN's Global Stakeholder Engagement team to facilitate the development of critical infrastructure for the Domain Name System.



Members of the At-Large community at the Second At-Large Summit held in London in June 2014.

ENGAGE WITH ICANN AT-LARGE

-  @ICANNATLARGE
-  FACEBOOK.COM/ICANNATLARGE
-  FLICKR.COM/PHOTOS/ICANN
-  YOUTUBE.COM/ICANNATLARGE
-  SLIDESHARE.NET/
ICANNPRESENTATIONS
-  ATLARGE.ICANN.ORG

SCAN CODE FOR MORE INFO



LOCAL CONTACT INFO



HELP US SHAPE THE INTERNET'S FUTURE

FOR MORE INFORMATION ABOUT JOINING AT-LARGE, VISIT: ATLARGE.ICANN.ORG 

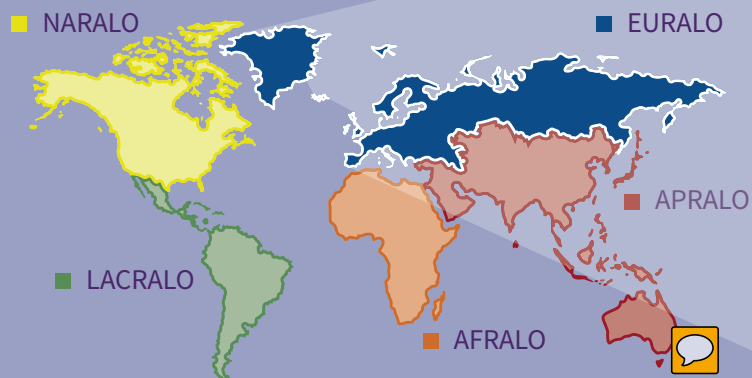
CONTACT AT-LARGE BY EMAILING:
STAFF@ATLARGE.ICANN.ORG

JOIN OUR MAILING LIST:
[LINK HERE](#) 

THE AT-LARGE ORGANIZATIONAL STRUCTURE

5 REGIONAL AT-LARGE ORGANIZATIONS (RALOs) — OVER 190 AT-LARGE STRUCTURES (ALSes)

The At-Large Structures form the basis of the At-Large community representing the interests of individual internet users worldwide. The five RALOs unite our ALSes based on their geographic regions, namely Africa (AFRALO), Asia, Australasian and Pacific Islands (APRALO), Europe (EURALO), Latin American and the Caribbean Islands (LACRALO), and North America (NARALO).



THE EUROPEAN REGIONAL AT-LARGE ORGANIZATION (EURALO)

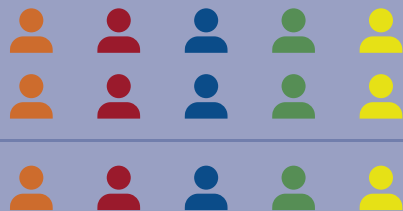


Quibus debite illaborpores
inctus posam veriati atemqui
dersped quatqua tatus.
Ci dolupti onsenemperem.



SEAT #15 ON THE ICANN BOARD
IS SELECTED BY THE ALAC AND
THE AT-LARGE COMMUNITY


AT-LARGE ADVISORY COMMITTEE (ALAC) — 15 MEMBERS





10 selected by RALOs to serve on the ALAC (2 from each RALO)

5 selected by Nom Com to serve on the ALAC (1 from each region)

WHAT IS ICANN?

To reach another person on the Internet you have to type an address into your computer - a name or a number. That address has to be unique so computers know where to find each other. ICANN helps coordinate these unique identifiers across the world. Without that coordination, we wouldn't have one global Internet. ICANN, formed in 1998, is a not-for-profit global organization dedicated to keeping the Internet secure, stable and interoperable.  ICANN promotes competition and develops policy on the Internet's unique identifiers.

WHAT IS THE AT-LARGE COMMUNITY?

Within ICANN, we are a volunteer community  representing the interests of Internet users. There are over 190 At-Large Structures (ALSes) around the world and a growing number of independent members  whether it is an Internet-related consumer rights group, an academic organization, or a public-minded individual, we share a passion for furthering the development of ICTs and contributing to policies that influence the technical coordination of the Domain Name System. We work to ensure that the Internet continues to serve the global public interest.

WHAT WE DO

Our community offers numerous opportunities for individuals and organizations interested in engaging with ICANN. Want to gain knowledge about ICANN issues concerning end-users? We encourage you to join the RALO and ALAC teleconferences that take place monthly, or to get involved in our capacity building webinar programs. Want to influence Internet policies such as WHOIS and new gTLDs? You may learn, discuss, and debate with members in our working groups, as well as help draft policy advice on behalf of the ALAC. Have interests in areas other than strictly Internet policy? You are also welcome to contribute in terms of advancing accessibility and inclusion at ICANN, testing communication and collaboration tools, and designing project proposals among other At-Large community-wide efforts. By gaining experience, you will also have the opportunity to assume positions in the RALOs, the ALAC, and other important decision-making bodies in ICANN. Want to join us? [Contact staff@atlarge.icann.org](mailto:staff@atlarge.icann.org).