



PDP WG to Review all RPMs in all gTLDs

Overview for WG Members – Thursday 21 April 2016

How did we get here



What are the RPMs to Review?

Sunrise Period and Trademark Claims Service

Sunrise services provide trademark holders with advance opportunity to register domain names corresponding to their marks before names are generally available to the public.

The Trademark Claims period follows the Sunrise period and runs for at least the first 90 days in which domain names are generally made available to all registrants that are qualified to register domain names within the TLD.

Uniform Rapid Suspension (URS)

The URS was designed as a complement to the UDRP, to provide trademark owners with a quick and low-cost process to suspend domain names on the same substantive grounds as the UDRP. It applies only to domain names registered in the New gTLDs.

Post-Delegation Dispute Resolution Procedures (PDDRs)

The PDDRs provide alternative avenues for a trademark holder who is harmed by a new gTLD registry operator's conduct to obtain redress.

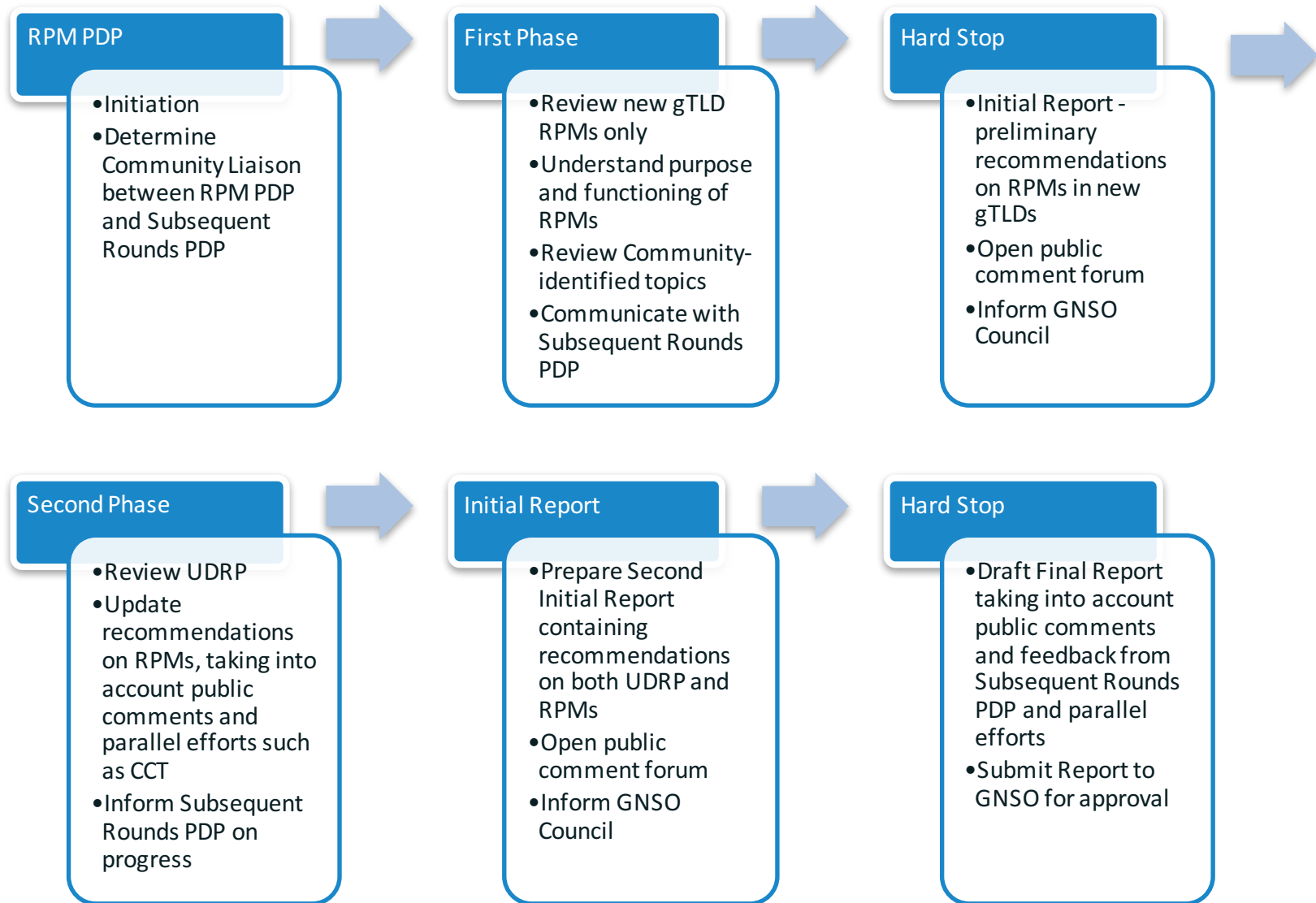
Trademark Clearing House (TMCH)

The Trademark Clearinghouse is a global database of verified trademark information to support rights protection processes. Benefits of inclusion are access to Sunrise Period and Trademark Claims Service.

Uniform Dispute Resolution Policy (UDRP)

The UDRP was created in 1999 and provides a uniform, standardized alternative dispute resolution procedure to resolve disputes concerning who is the rightful holder of a registered domain name. It is applicable to all domains registered in all generic top-level domains (gTLDs).

Two-Phased PDP as laid out in Charter



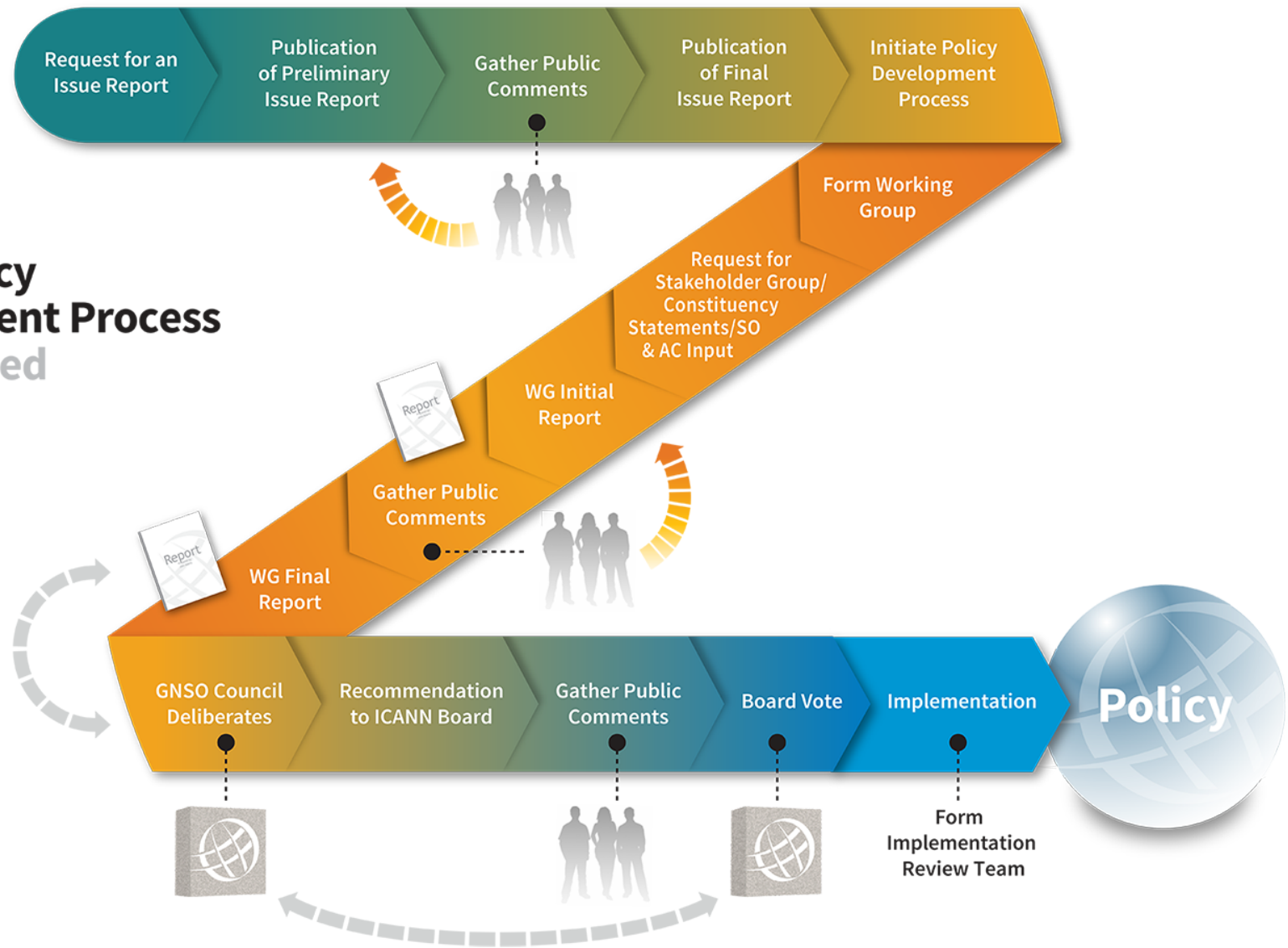
Required Steps of the WG (as per its Charter)

- The Working Group is expected to assess the effectiveness of the relevant RPM(s), for which the input of experienced online dispute resolution providers and other subject matter experts should be sought.
- The Working Group should consider the interplay between and complementary roles of each RPM to in seeking to more fully understand their overall functioning and effectiveness.
- The Working Group is expected to also consider the overarching issue as to whether or not all the RPMs collectively fulfill the purposes for which they were created, or whether additional policy recommendations are needed, including to clarify and unify policy goals.

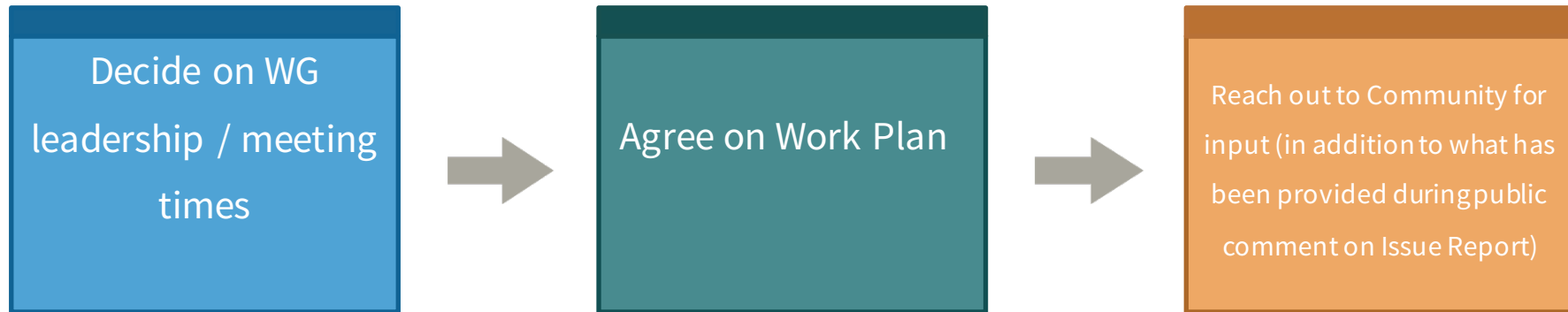
PDP Work-Flow

GNSO Policy Development Process *Summarized

*Some steps omitted, for brevity.



Next Steps



Info:

- ⦿ WG Wiki Page: <https://community.icann.org/x/wCWAaw>
- ⦿ WG Project Page: <http://gnso.icann.org/en/group-activities/active/rpm>