

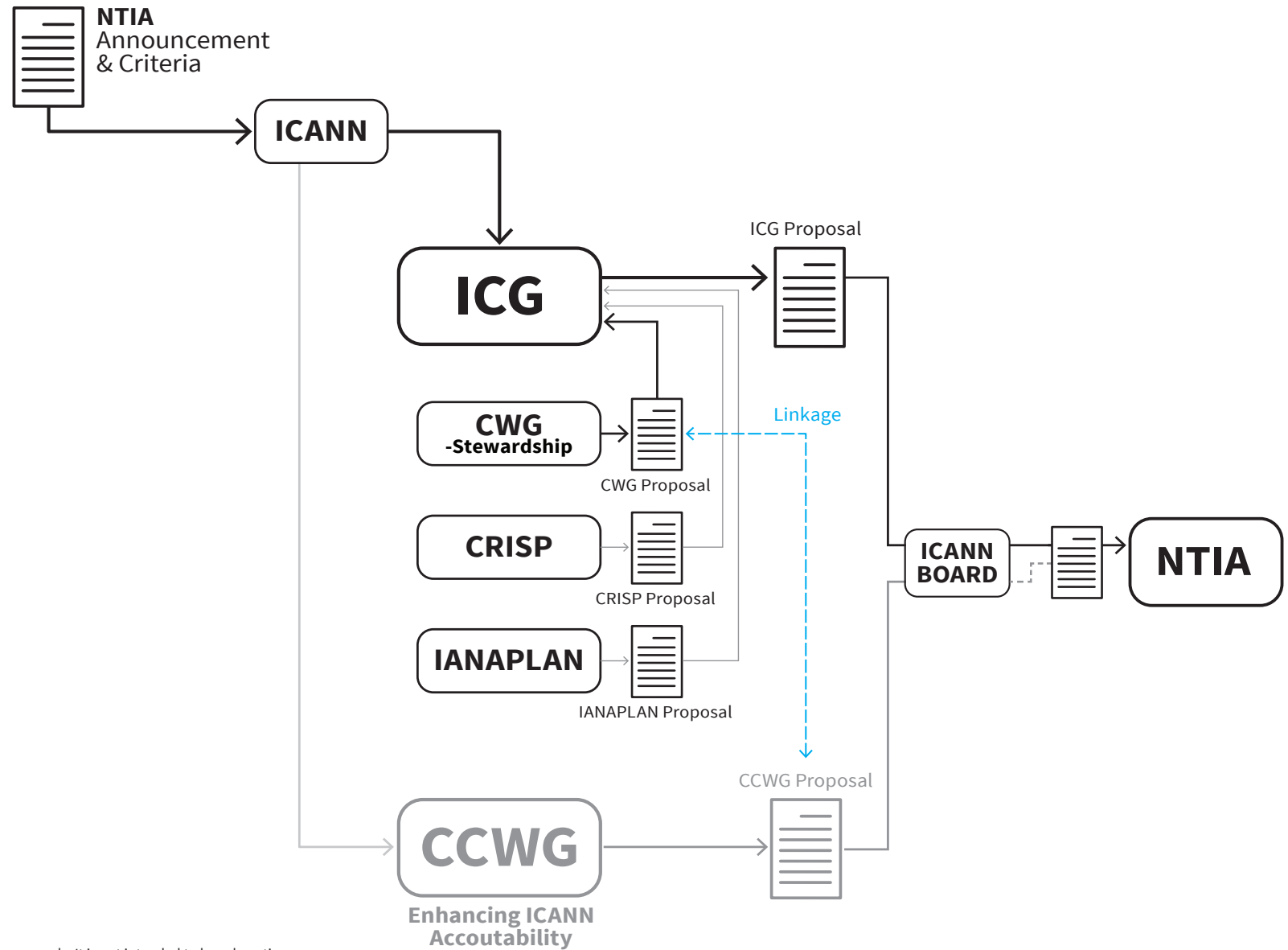
IANA Stewardship Transition

A Live Example of a Multistakeholder Process

WSIS Forum

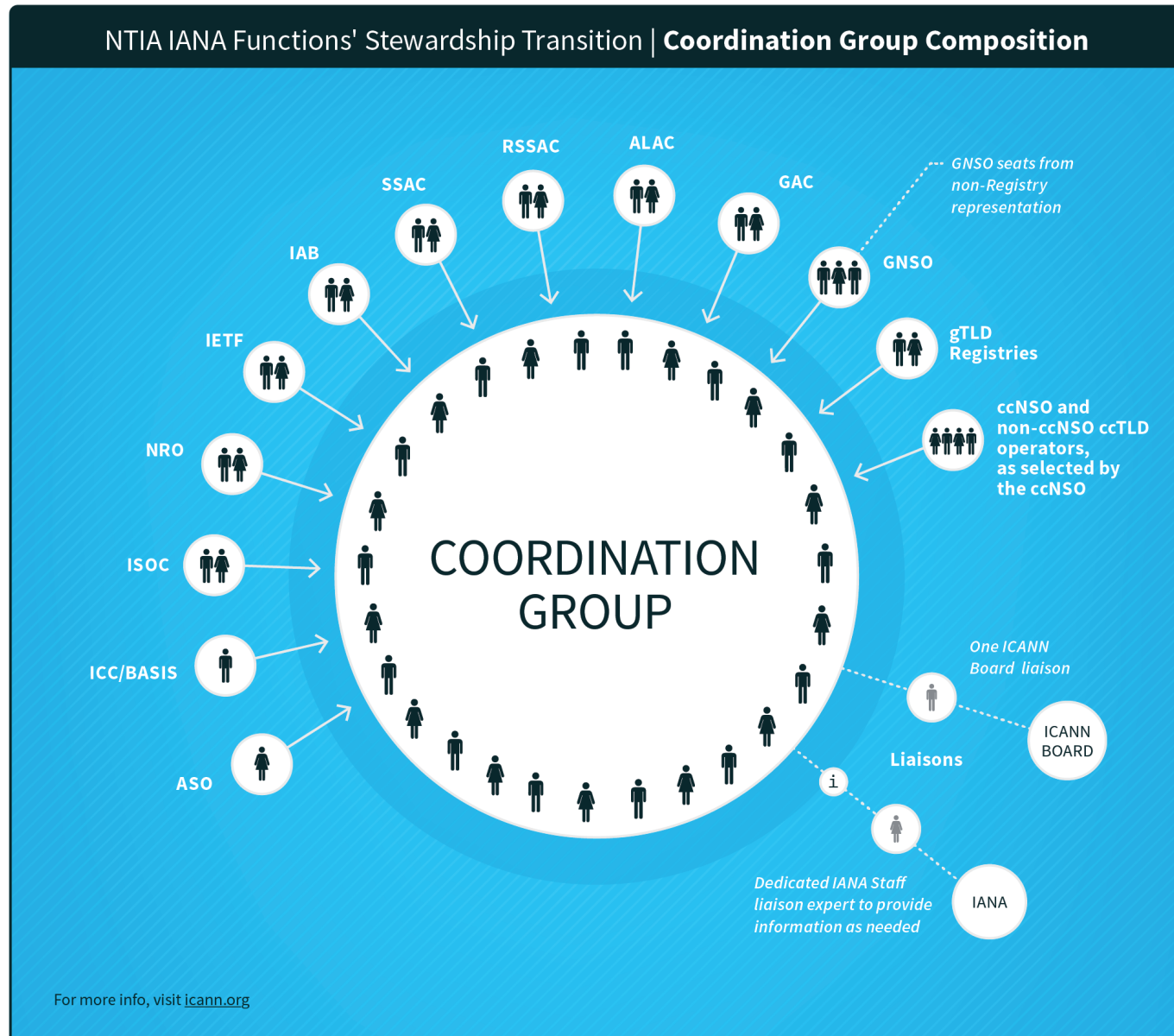
28 May 2015

IANA Stewardship Transition: The Big Picture



Note: the information on this page is for illustrative purposes only. It is not intended to be exhaustive.

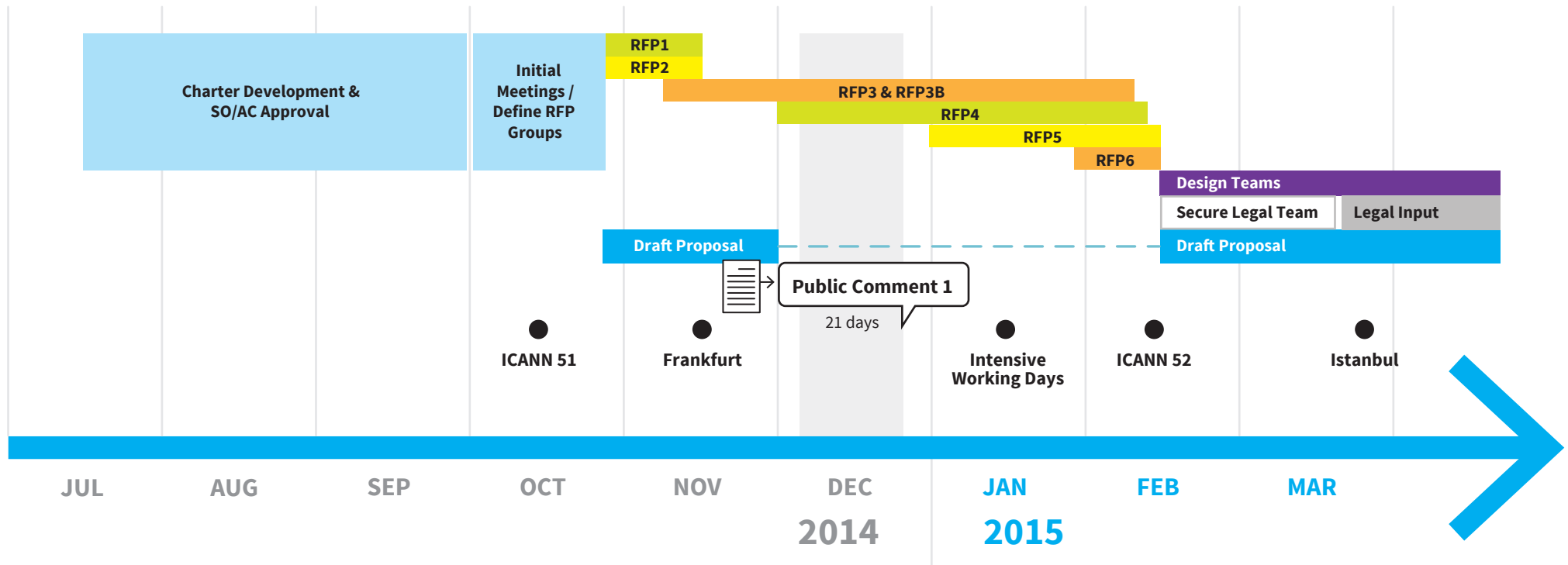
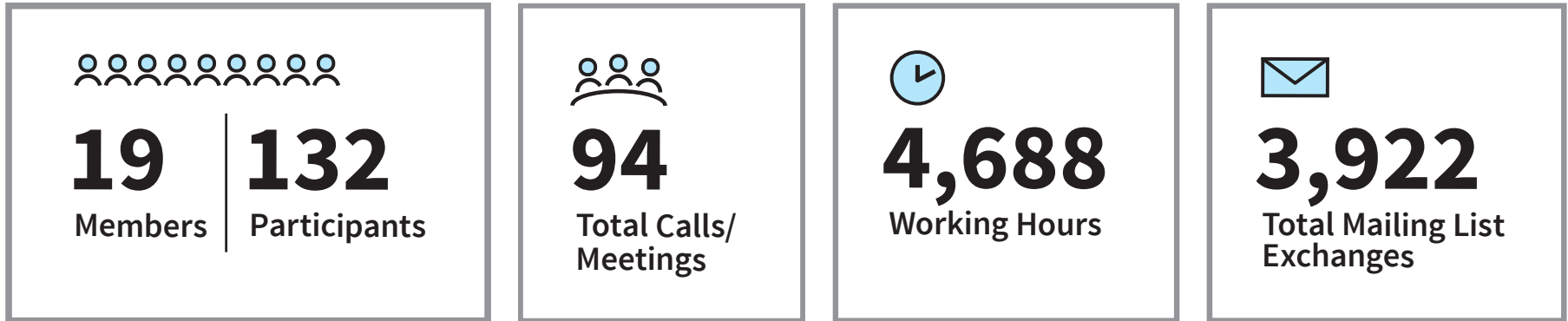
IANA Stewardship Transition Coordination Group: **Composition**



CWG-Stewardship: Timeline • Progress to Date

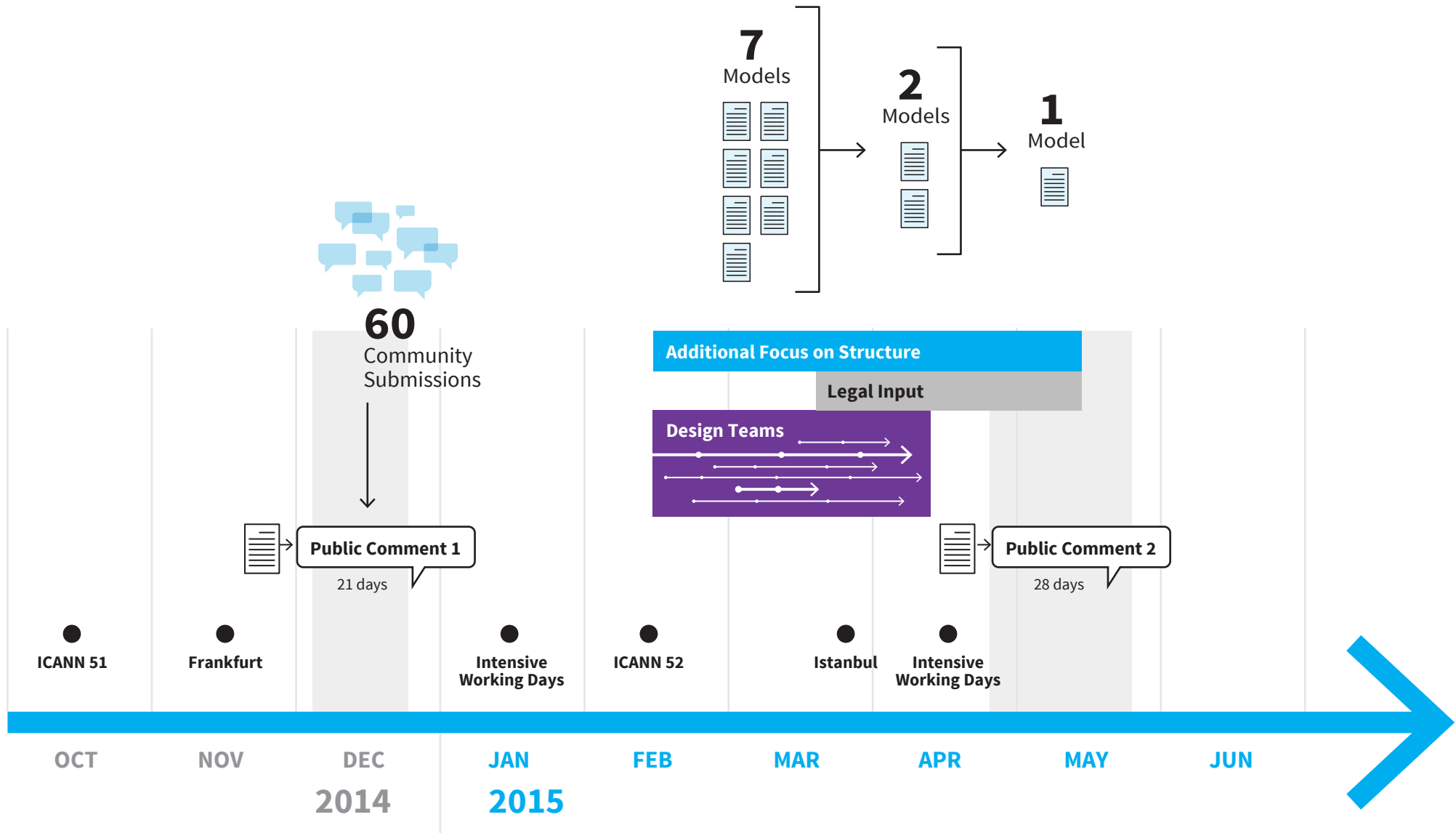
Domain Names Community

Note: the information on this page is for illustrative purposes only. It is not intended to be exhaustive.



CWG-Stewardship: Proposal Development Overview

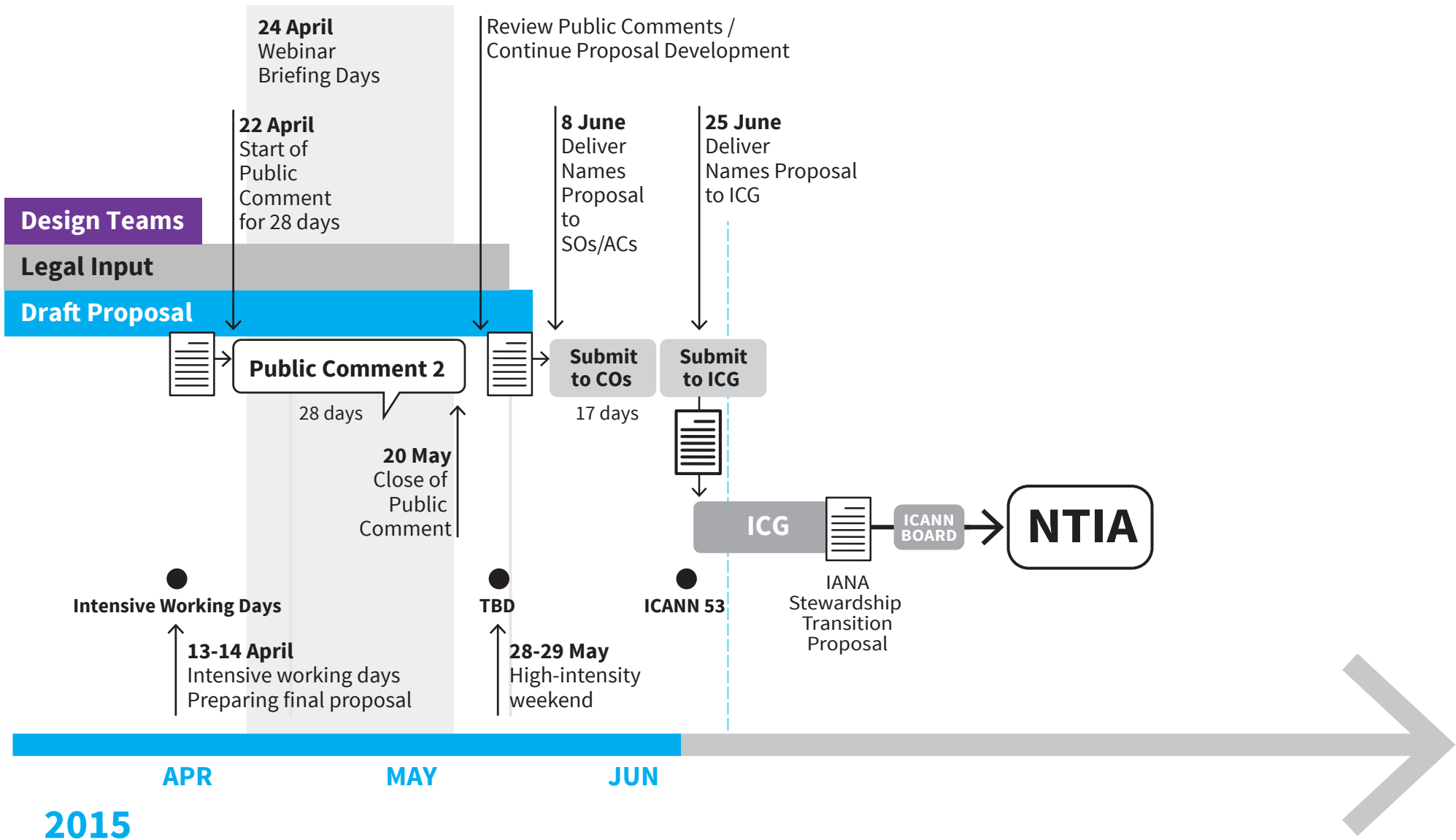
Domain Names Community



CWG-Stewardship: Timeline • The Road Ahead

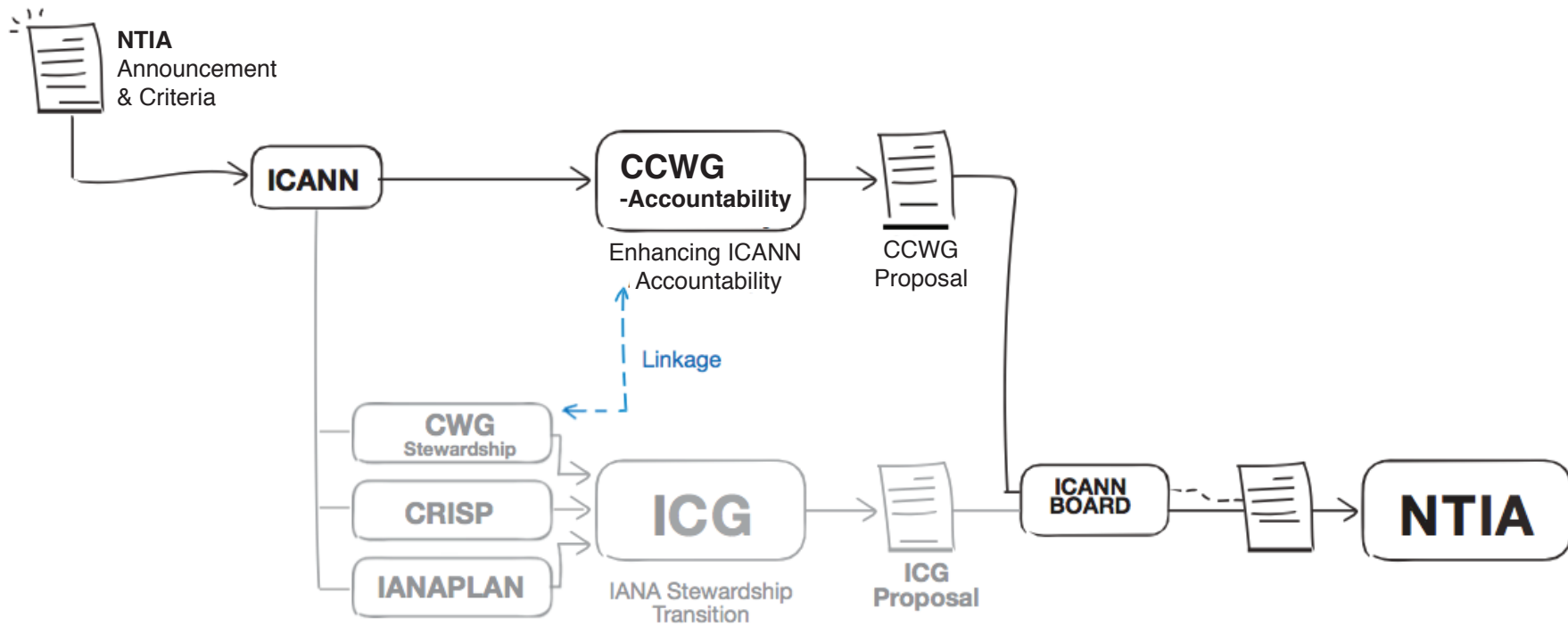
Domain Names Community

Note: the information on this page is for illustrative purposes only. It is not intended to be exhaustive.

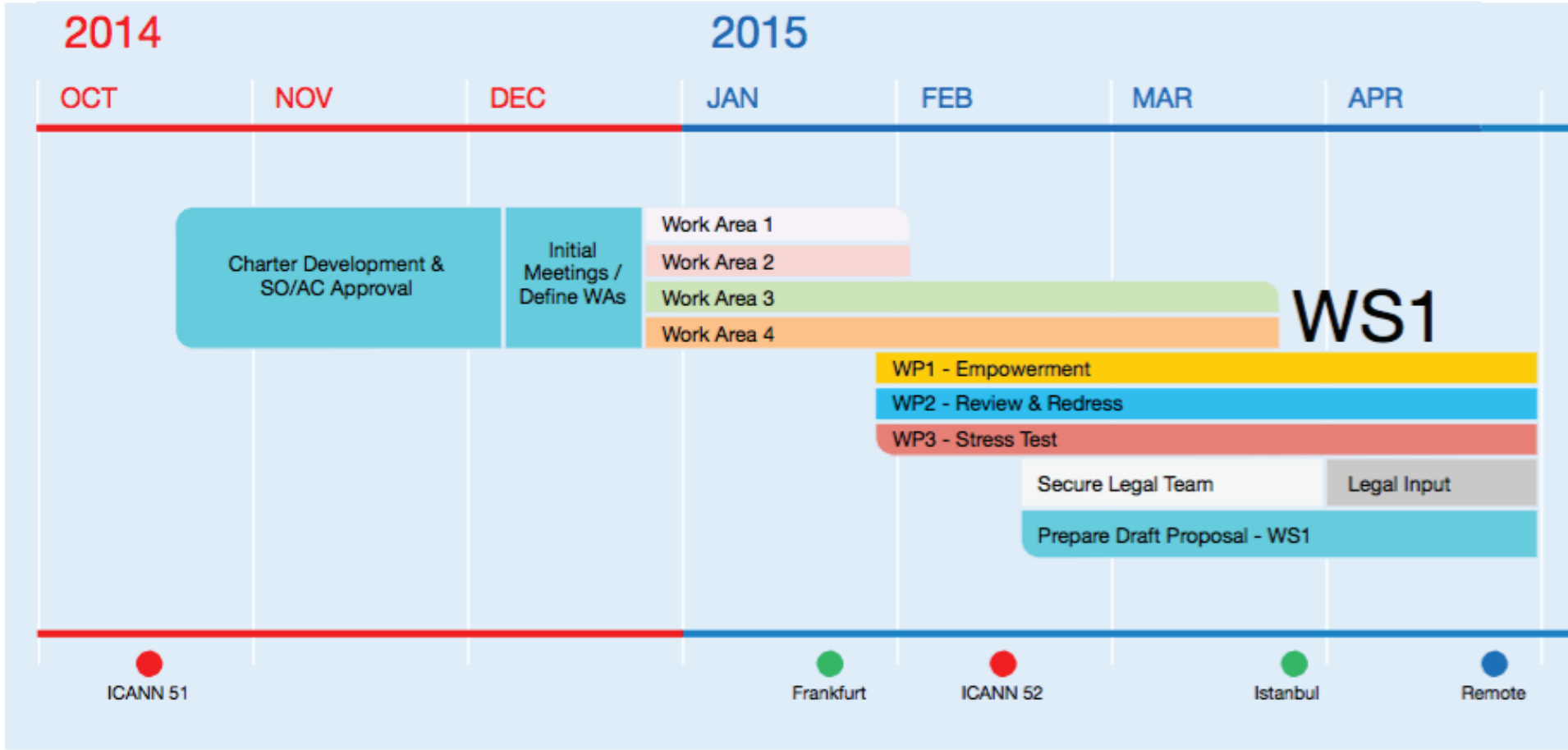
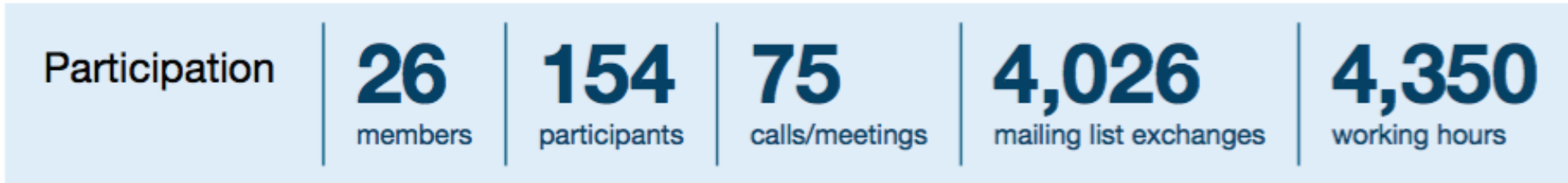


2015

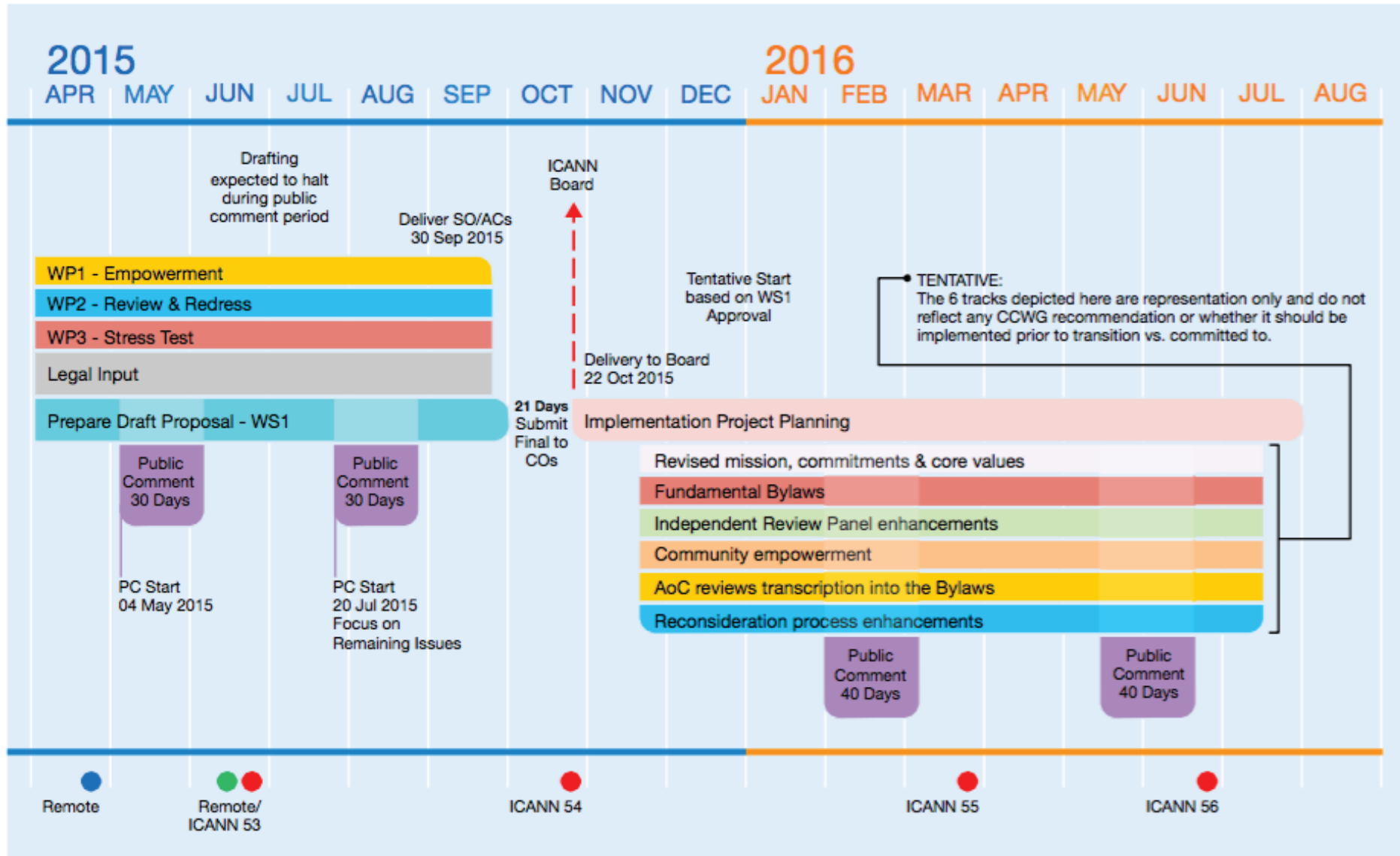
Enhancing ICANN Accountability: The Big Picture



CCWG-Accountability: Timeline • Progress to Date



CCWG-Accountability: Timeline • The Road Ahead



CRISP Team: **Proposal Development Overview**

Numbering Resources Community

June 2014:

IANA Stewardship Transition Coordination Group (ICG) issues Request for Proposals to three IANA “affected communities.”

Q4 2014:

Consolidated RIR IANA Stewardship Proposal Team (CRISP Team) established to prepare an Internet numbers community proposal.

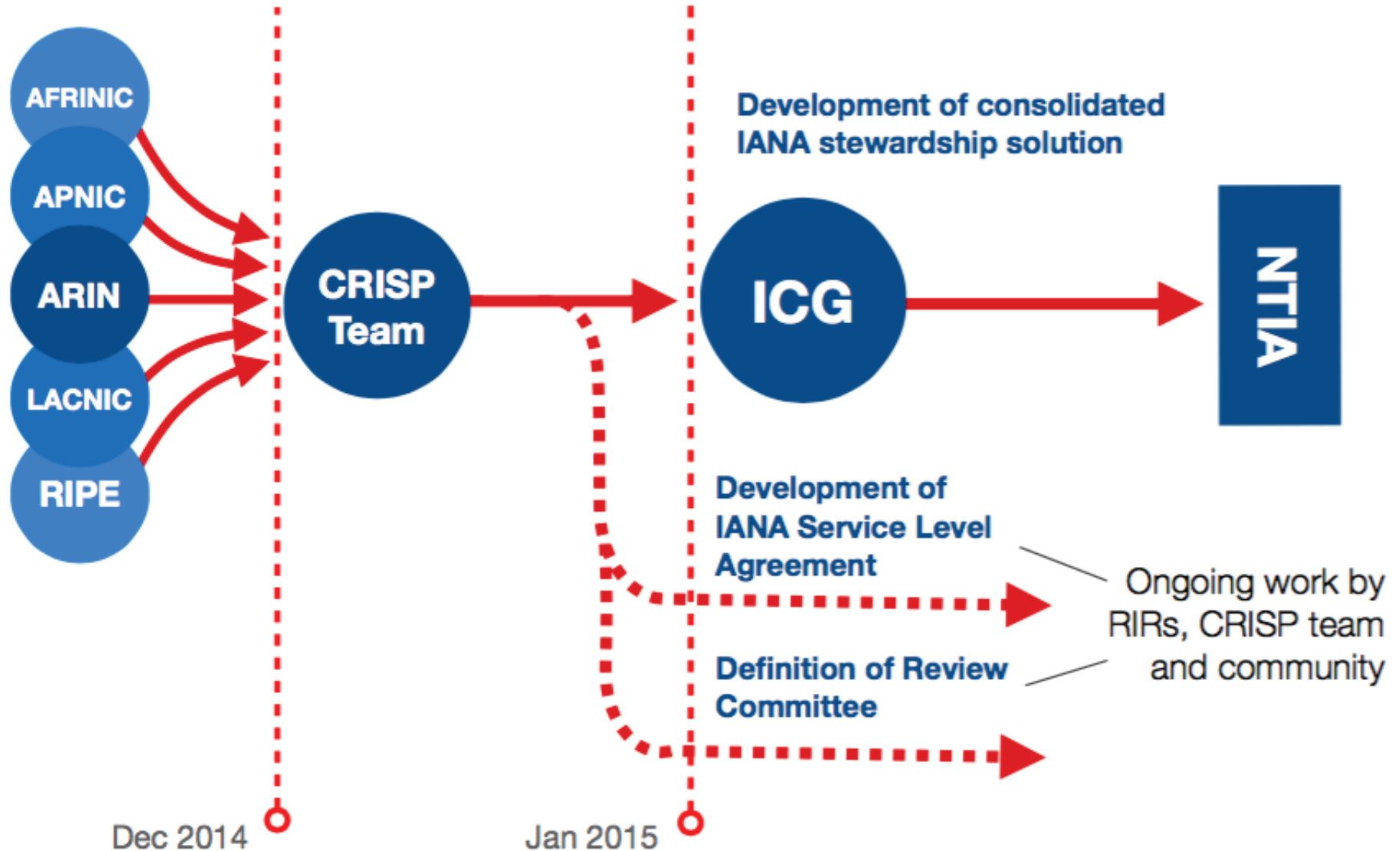
Global discussion platform established: ianaxfer@nro.net

January 2015:

Internet numbers community IANA stewardship proposal submitted to ICG.

CRISP Team: Proposal Development Overview

Numbering Resources Community



IANAPLAN WG: Proposal Development Overview

Protocol Parameters Community

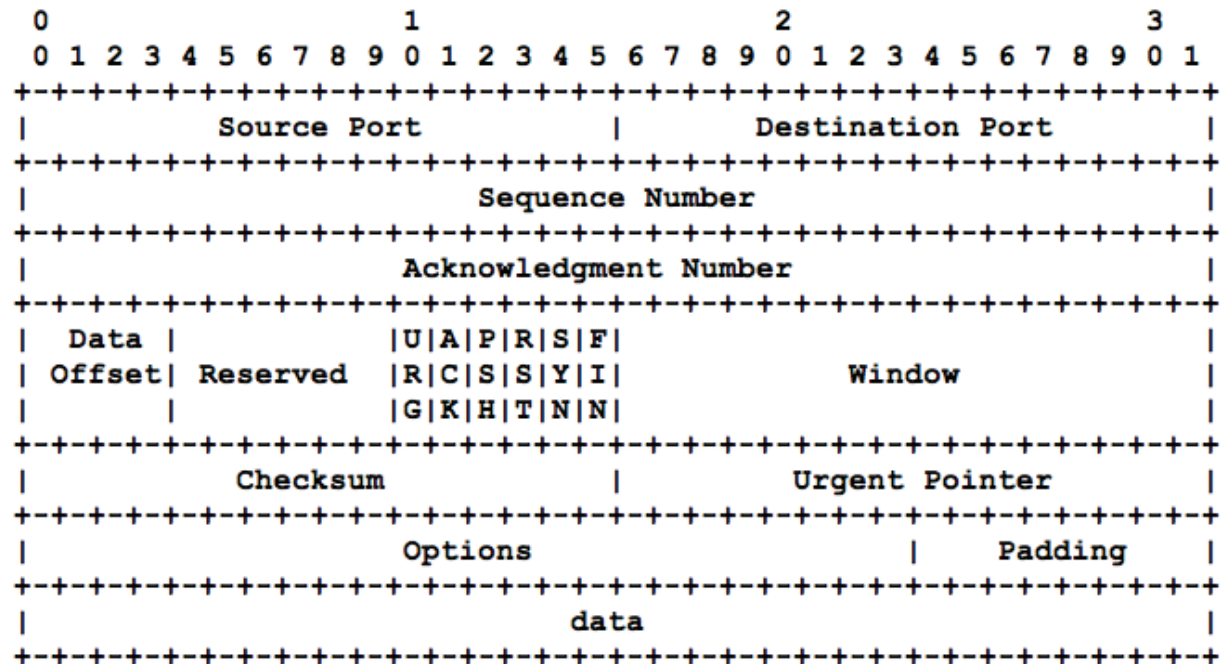
What are Protocol Parameters?

A database of values or mnemonics associated with specific behaviors for IETF protocols

Example:

TCP port number 80 means payload will be HTTP (the web)

Developers use these parameters for their implementations



TCP Header Format

IANAPLAN WG: **Proposal Development Overview**

Protocol Parameters Community

How things work today:

IETF specifications create registries of values and the policies to update those values.
(Anyone with an email address may participate in the IETF).

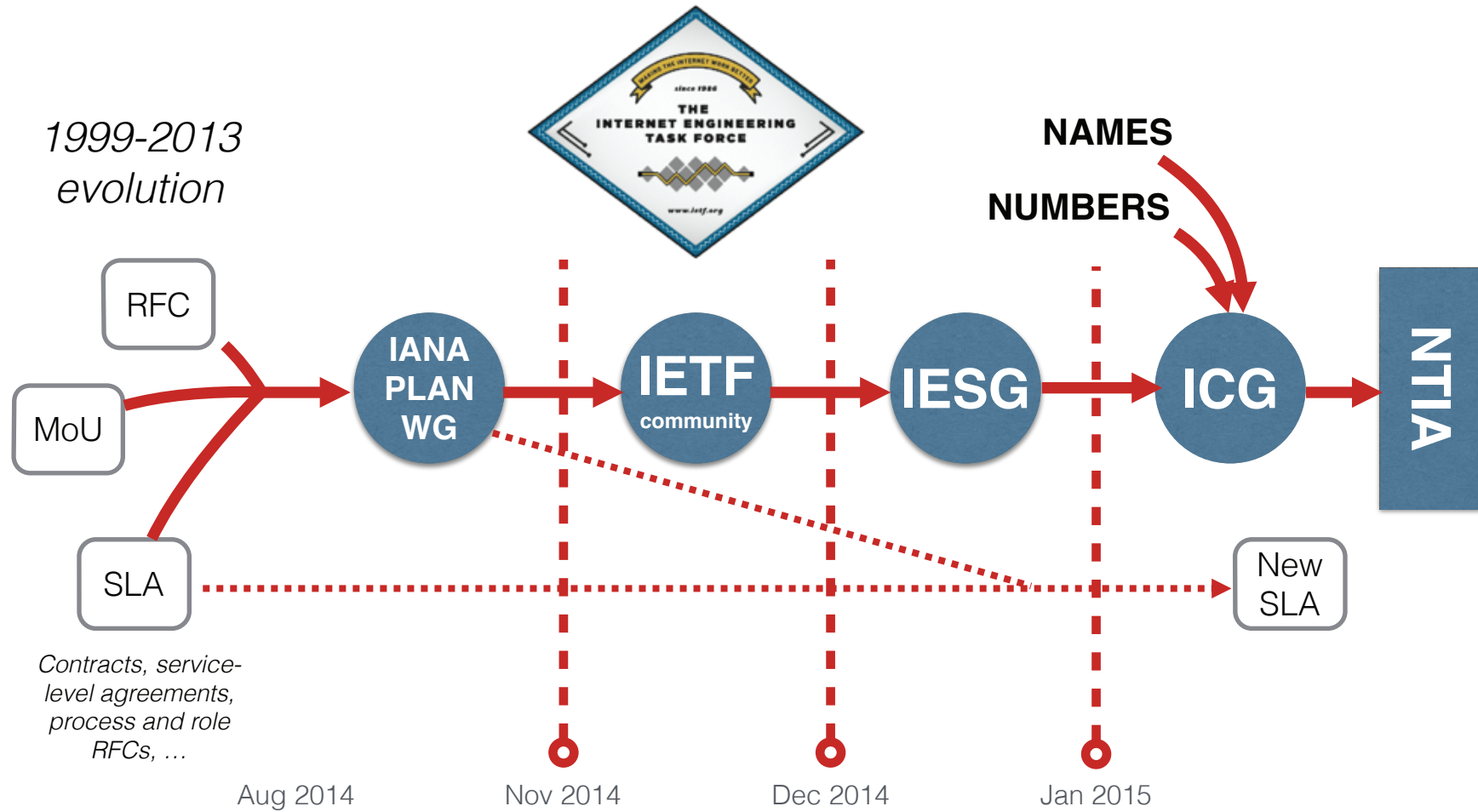
Any individual may apply for an assignment for a specific protocol parameter.

Applications are considered by IETF-designated experts or by the IETF, strictly based on the policy associated with the registry.

All decisions are subject to dispute resolution.

IANAPLAN WG: Proposal Development Overview

Protocol Parameters Community



Stakeholder Insights and Discussion