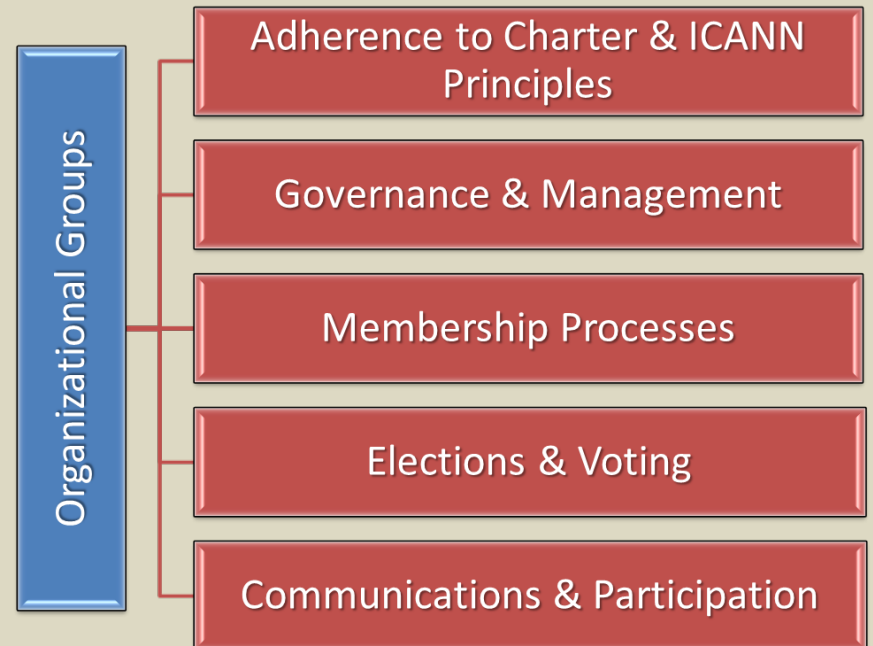
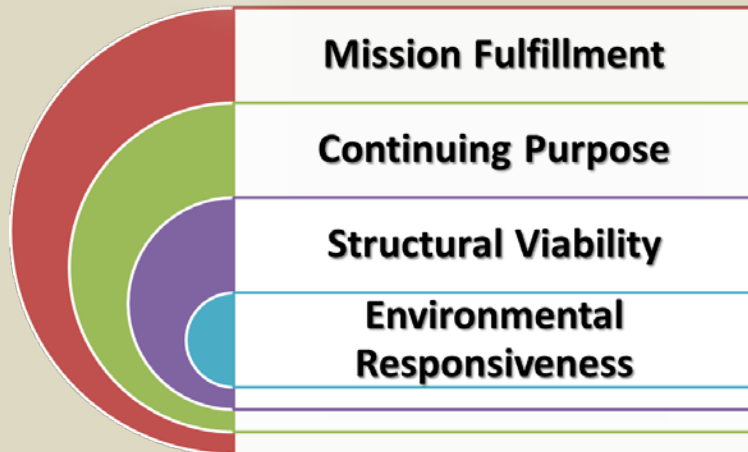


# At Large Review



**Structural Improvements Committee**  
**13 January 2015**

## **Objective**

- Comply with requirements of ICANN Bylaws - examine organizational effectiveness
- Apply lessons learned from GNSO Review

## **Independent Examiner**

- Selected by competitive bid, based on set criteria
- Tightly scoped contract

## **Working Party**

- Designated by ALAC
- Serves as a liaison between the SIC, ALAC and At Large and Examiner

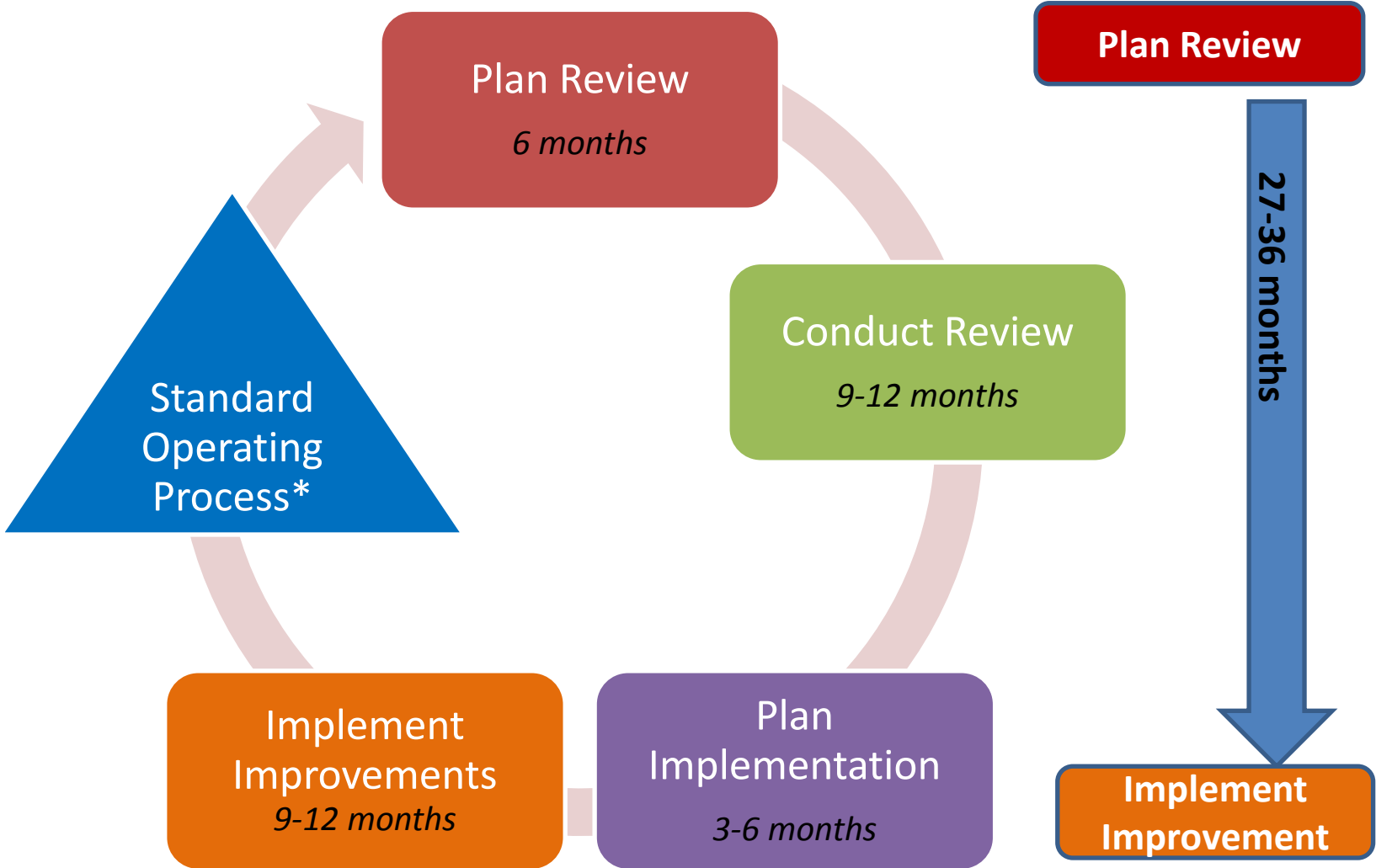
## **Work Methods**

- Examine documentation, records, reports; observe
- 360 Assessment – online tool
- Limited Interviews

## **Review Criteria**

- Objective and quantifiable, selected from developed lists

# Organizational Review Cycle – 5 Years

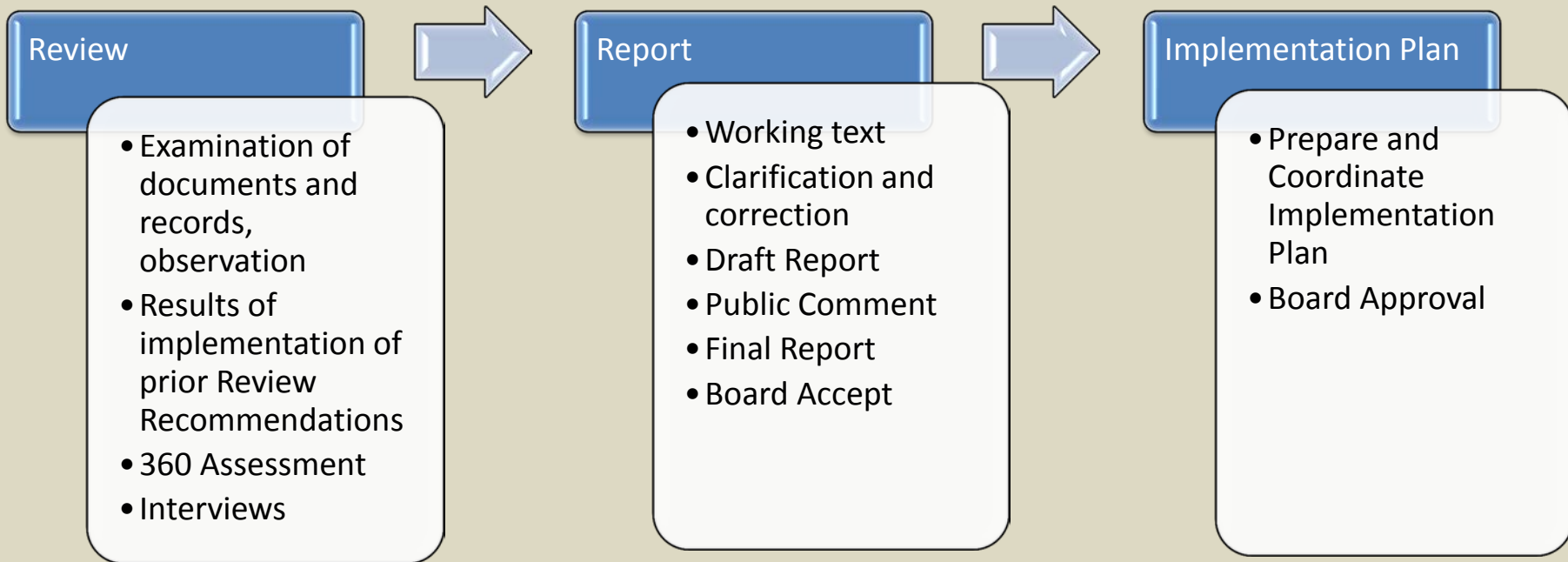


\* Includes ongoing reporting, tracking, monitoring effectiveness

# Timeline

Phase	Date	Activities
Plan Review	JAN – JUN '15	Develop Plan Form At Large Review Working Party RFP/Select Examiner
Conduct Review	JUL'15 – MAR'16	Conduct Review Report and Recommendations
Plan Implementation	APR – SEPT'16	Develop Improvement Plan Integrate into Plans and Budget Publish Report Monitor Implementation
Implement Improvements	OCT'16 – JUN'17	Implement improvements Monitor implementation Integrate into plans and budget Publish Implementation Report
Standard Operating Process	JUL'17 – AUG'19	Gain operational experience Ongoing reporting, tracking and monitoring
Assess	SEP – DEC'19	Conduct Effectiveness Self-Assessment Prepare Report for Next Review

# Review Process



# Roles and Responsibilities

## SIC

- Oversight
- Accept Report\*
- Approve Plans\*

## Staff

- Prepare RFP
- Select Examiner
- Monitor Process
- Support Examination
- Support outreach and engagement
- Manage Report Process
- Prepare Implementation Plan

## Independent Examiner

- Review of documents, records
- Observe proceedings
- Develop and conduct 360 Assessment
- Conduct interviews
- Prepare report
- Engage with stakeholders for clarification and correction

## Review Working Party\*\*

- Assist with outreach and engagement
- Coordinate 360 Assessment
- Coordinate Interviews
- Provide clarification and corrections
- Prepare Implementation Plan

\*Prepare Recommendations for Board Action

\*\* Formed by ALAC

# Reference Information

Staff will develop an At Large Review Wiki, FAQs and maintain key statistics (see GNSO Review for reference)

- GNSO Review Wiki

<https://community.icann.org/display/GR2/GNSO+Review+2014+Home>

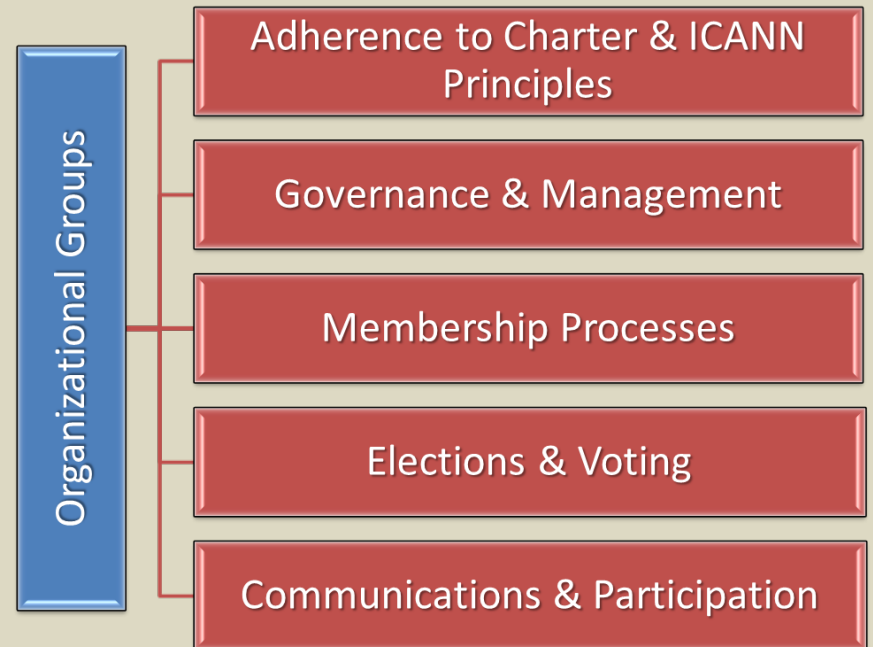
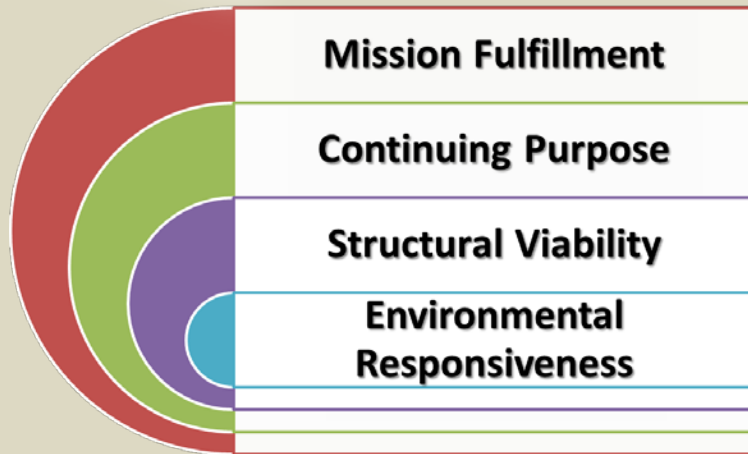
- GNSO Review FAQs

<https://community.icann.org/display/GR2/GNSO+Review+2014+Frequently+Asked+Questions+%28FAQs%29+Workspace>

- GNSO Review Key Statistics

<https://community.icann.org/display/GR2/GNSO+Review+2014+Home>

# Thank You



## Questions?