

Sequencing of EWG RDS Principles as input to GNSO PDP (Draft 3)

The flow charts that follow suggest grouping and sequencing of principles contained in the EWG's Final Report on a proposed Next-Generation Registration Directory Service (RDS).

These charts identify a phased PDP WG process consisting of:

- | | |
|---|-------------------|
| Phase 1) Policy - Requirements Definition | (WHY) |
| Phase 2) Policy – Functional Design | (WHAT) |
| Phase 3) Implementation Guidance | (Guidance on HOW) |

along with pre- and post-PDP WG steps.

Before Phase 1, preliminary steps must be completed as shown on page 4, including publication of a Final Issue Report and PDP WG charter, adoption by the GNSO Council, and PDP WG formation.

During Phase 1, the PDP WG would examine all RDS policy requirements at a high level. The GNSO Council would review/approve Phase 1 outputs before the PDP WG proceeds to Phase 2.

During Phase 2, opportunities for parallel design are shown, sequenced to reflect inter-dependencies. For example, group B policies must be drafted before group C can start, but group C policies could potentially be drafted in parallel by PDP WG subteams, given sufficient resources and coordination. The GNSO Council would periodically review PDP WG work-in-progress to ensure sustained progress and alignment with Phase 1 requirements.

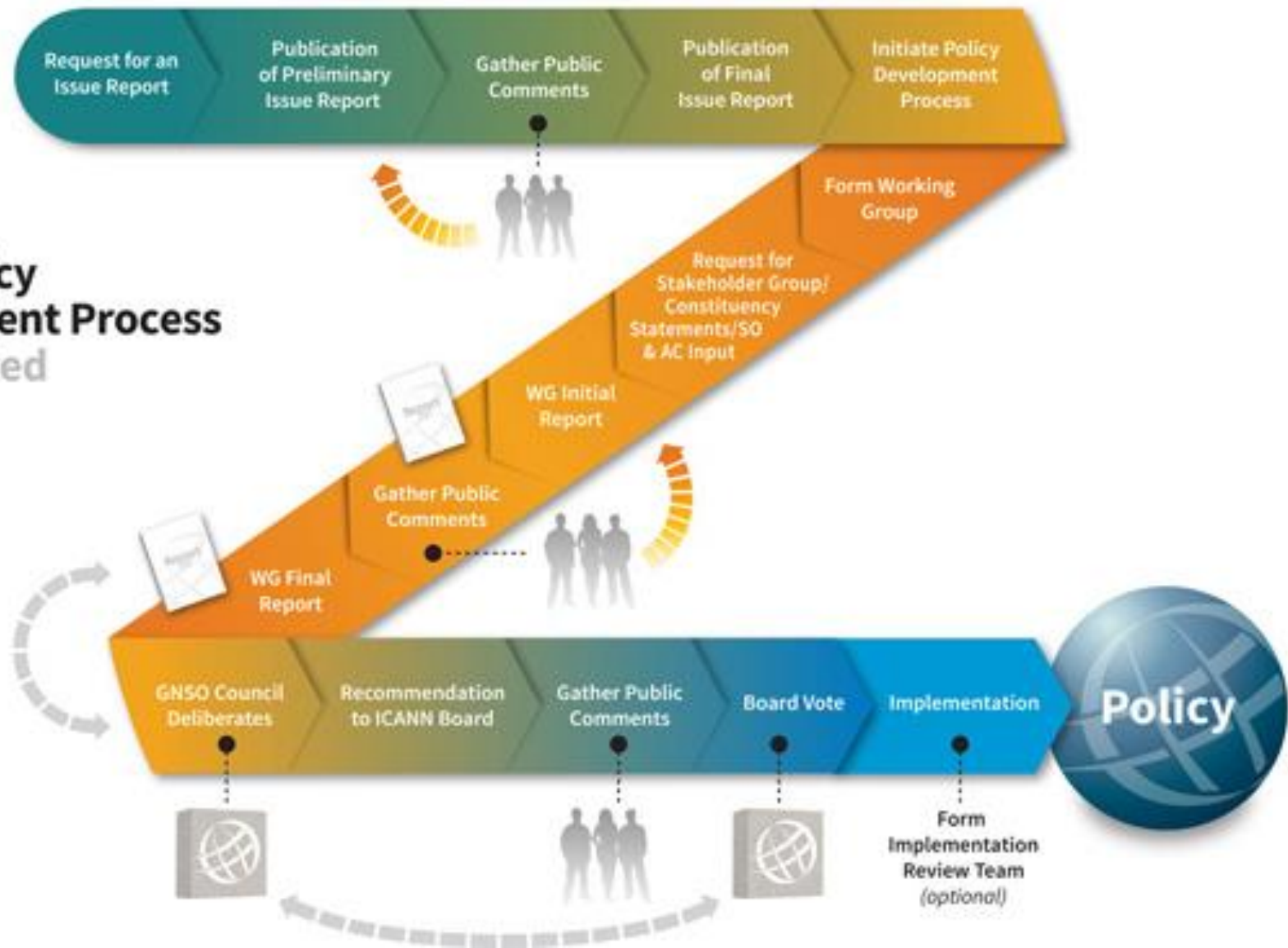
During Phase 3, the PDP WG would dive more deeply into each policy group to create implementation guidance. Details considered in Phase 3 may require refinement of certain Phase 2 policies; refinements must be carefully coordinated to manage interdependencies.

After Phase 3, PDP WG outputs would feed into the next steps detailed on page 8 (e.g., IRT & Staff implementation efforts, informed by PDP WG implementation guidance).

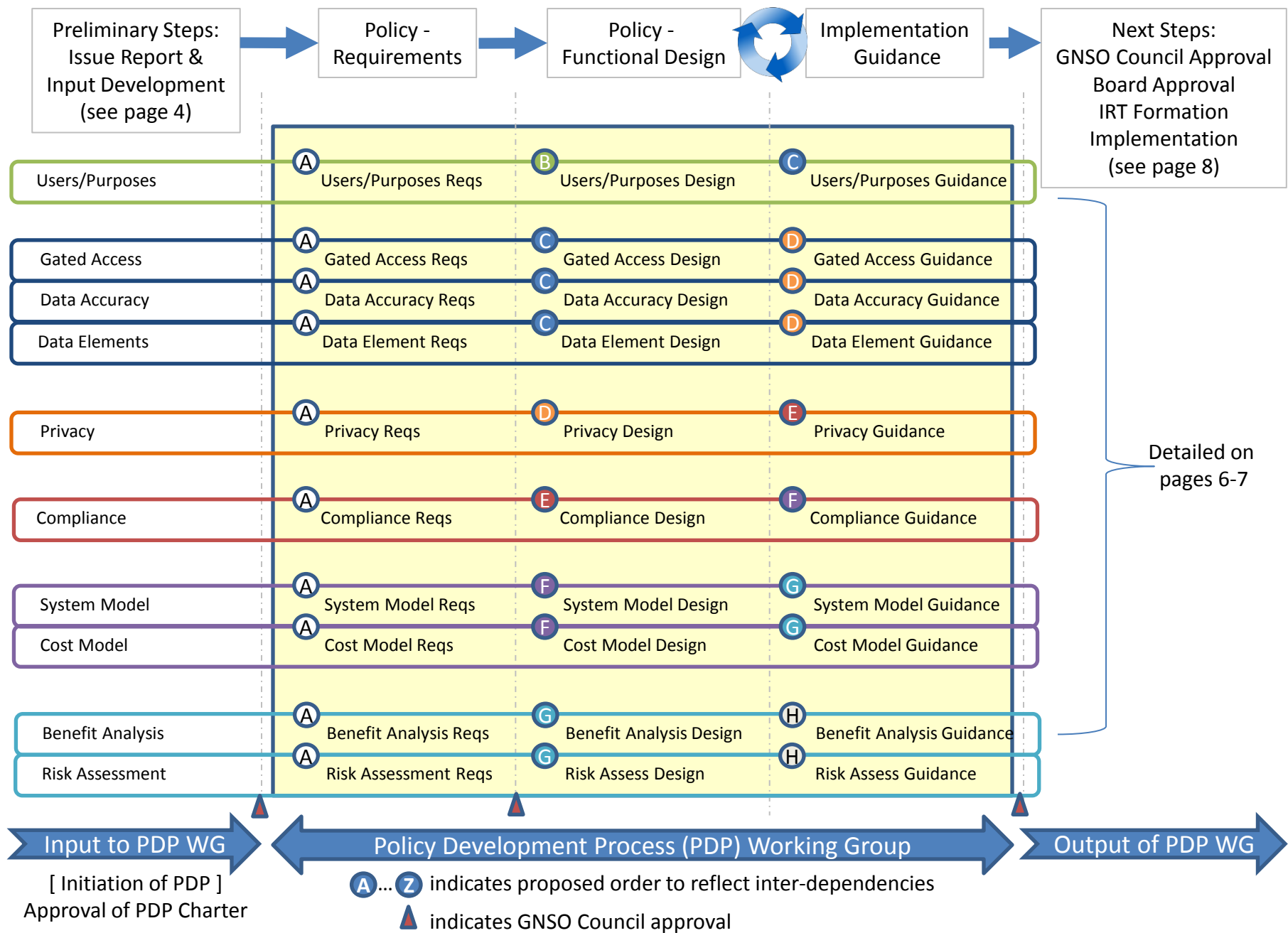
GNSO Policy Development Process

*Summarized

*Some steps omitted, for brevity.



GNSO PDP Materials: <http://gns0.icann.org/en/node/31379/>



Preliminary Steps

Nov 2012	Board	<input checked="" type="checkbox"/> Direct preparation of a (PDP) Issue Report
Nov 2012	Board	<input checked="" type="checkbox"/> Launch the EWG
Mar 2013	Staff	<input checked="" type="checkbox"/> PDP - Preliminary Issue Report
Mar-Apr 2013	Community	<input checked="" type="checkbox"/> Public Comment Forum (on above)
Jun 2013	EWG	<input checked="" type="checkbox"/> EWG Initial Report
Jun-Aug 2013	Community	<input checked="" type="checkbox"/> Public Comment Forum, Consultations (on above)
Nov 2013	EWG	<input checked="" type="checkbox"/> EWG Update Report
Dec-Feb 2014	Community	<input checked="" type="checkbox"/> Public Comment Forum, Consultations (on above)
Jun 2014	EWG	<input checked="" type="checkbox"/> EWG Final Report
Oct 2014	EP-WG	<input type="checkbox"/> Informal collaboration group to recommend PDP WG Process, Charter, and Inputs
	Staff	<input type="checkbox"/> PDP – New Preliminary Issue Report
	Community	<input type="checkbox"/> Public Comment Forum, Consultations (on above)
	Staff	<input type="checkbox"/> PDP - Final Issue Report
	GNSO Council	<input type="checkbox"/> PDP - Refine Charter for PDP Working Group
	GNSO Council	<input type="checkbox"/> PDP - Adopt Charter (start of PDP WG process)

See proposed EP-WG Workplan for further details

Available and Recommended Inputs for PDP WG (to be identified by EP-WG)

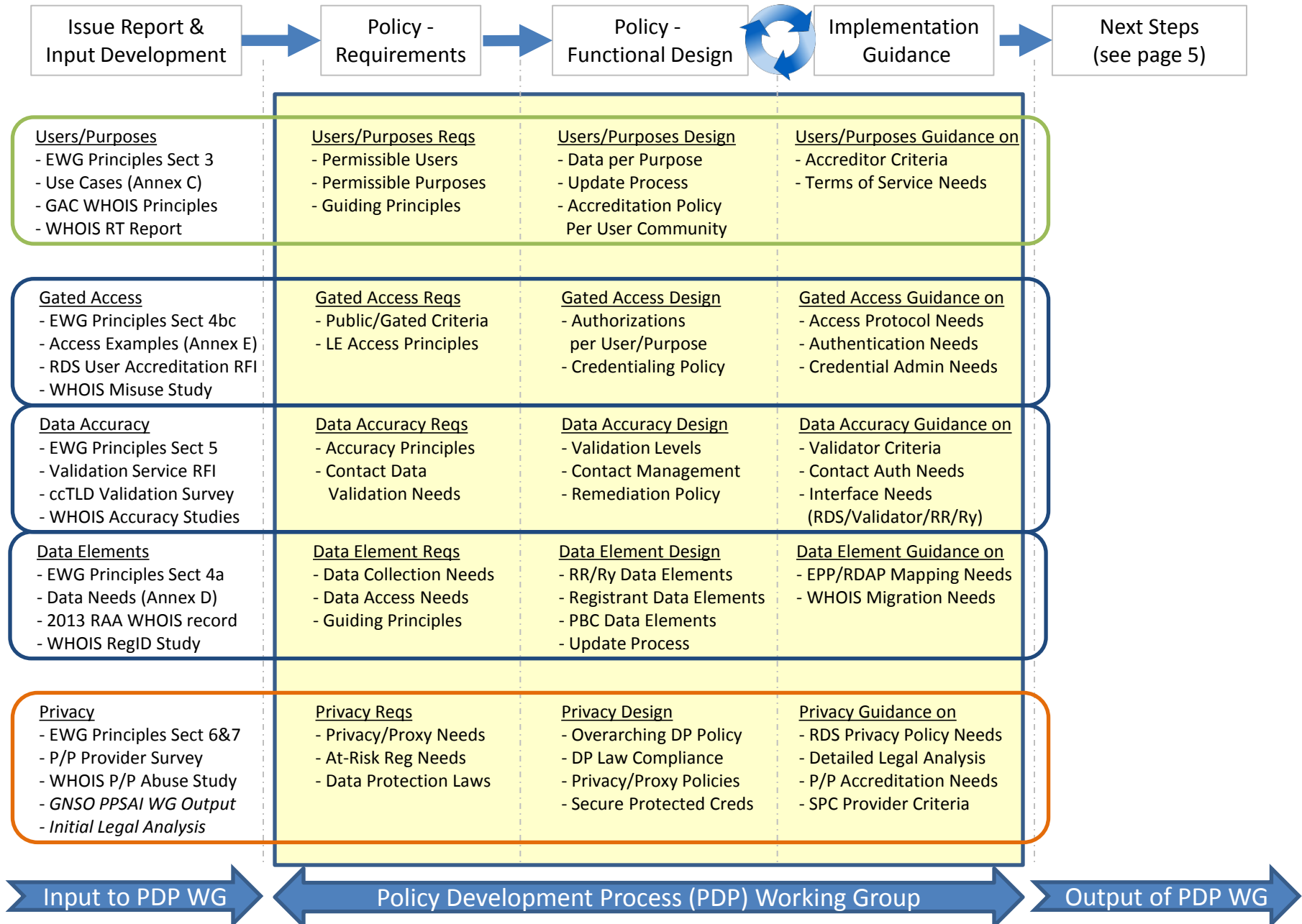
Available Inputs include

- EWG Final Report
- EWG Research on Accreditation, Validation, Privacy/Proxy, Cost, Risks/Benefits
- WHOIS Review Team Final Report
- GAC WHOIS Principles
- 2013 RAA WHOIS Requirements
- WHOIS Studies on Accuracy, Registrant Identification, Misuse, P/P Abuse
- IETF RFCs on RDAP and EPP

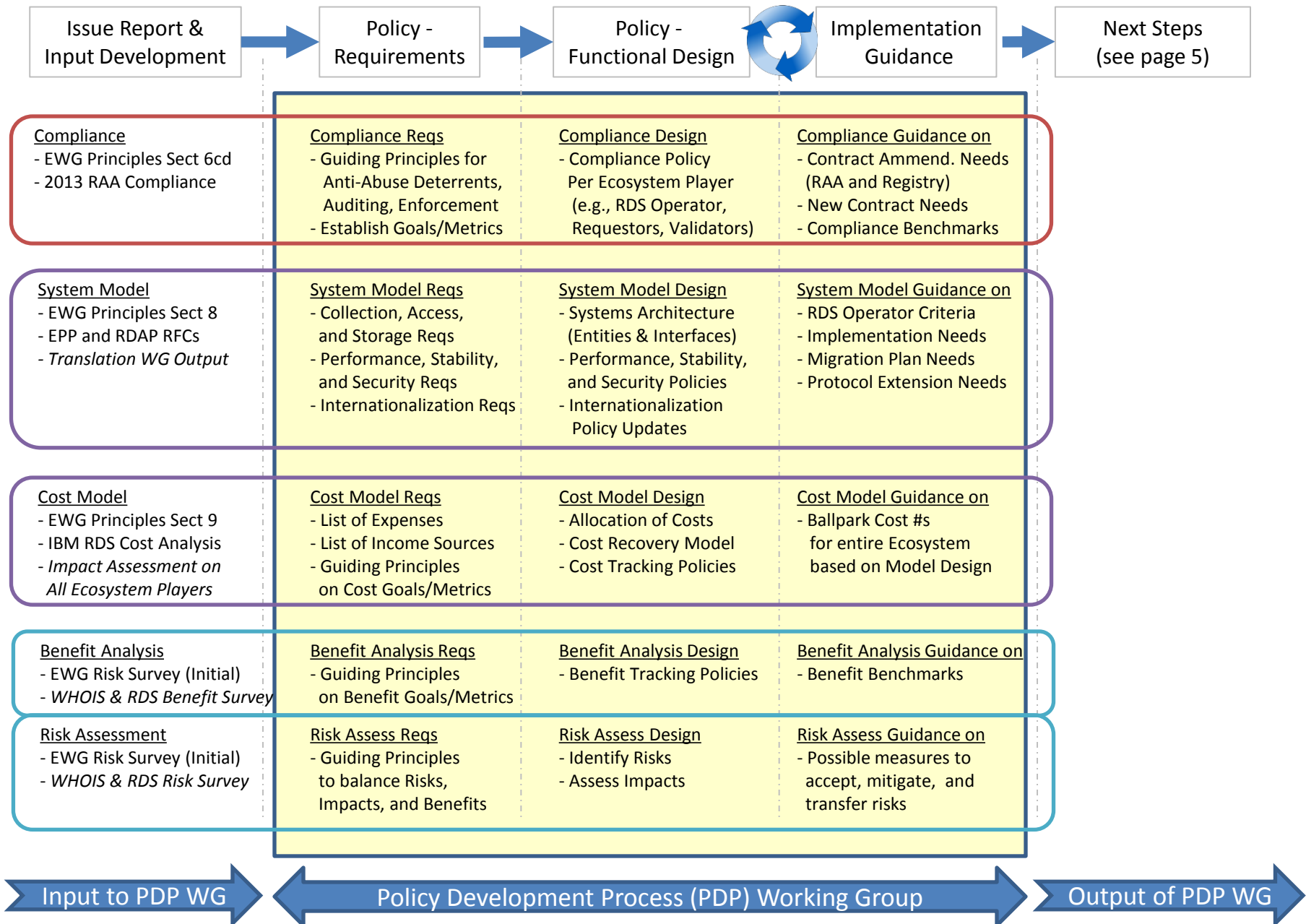
Recommended Additional Inputs	Essential?	When needed?
Stakeholder input on costs and benefits*		
Stakeholder input on risks and impacts		
Initial legal analysis		
PPSAI WG output		
Translation/Transliteration WG output		
Community input on Preliminary Issue Report and Proposed PDP WG Charter		

* For example, solicit input on benefits and costs from all stakeholders. This would be done initially and on an on-going basis to measure efficacy.

PDP WG Process



PDP WG Process



Next Steps (using PDP WG's output)



* See GDD Consensus Policies Implementation Framework for further details on each phase

