



Beginner's Guide to  
AT-LARGE STRUCTURES (ALSes)





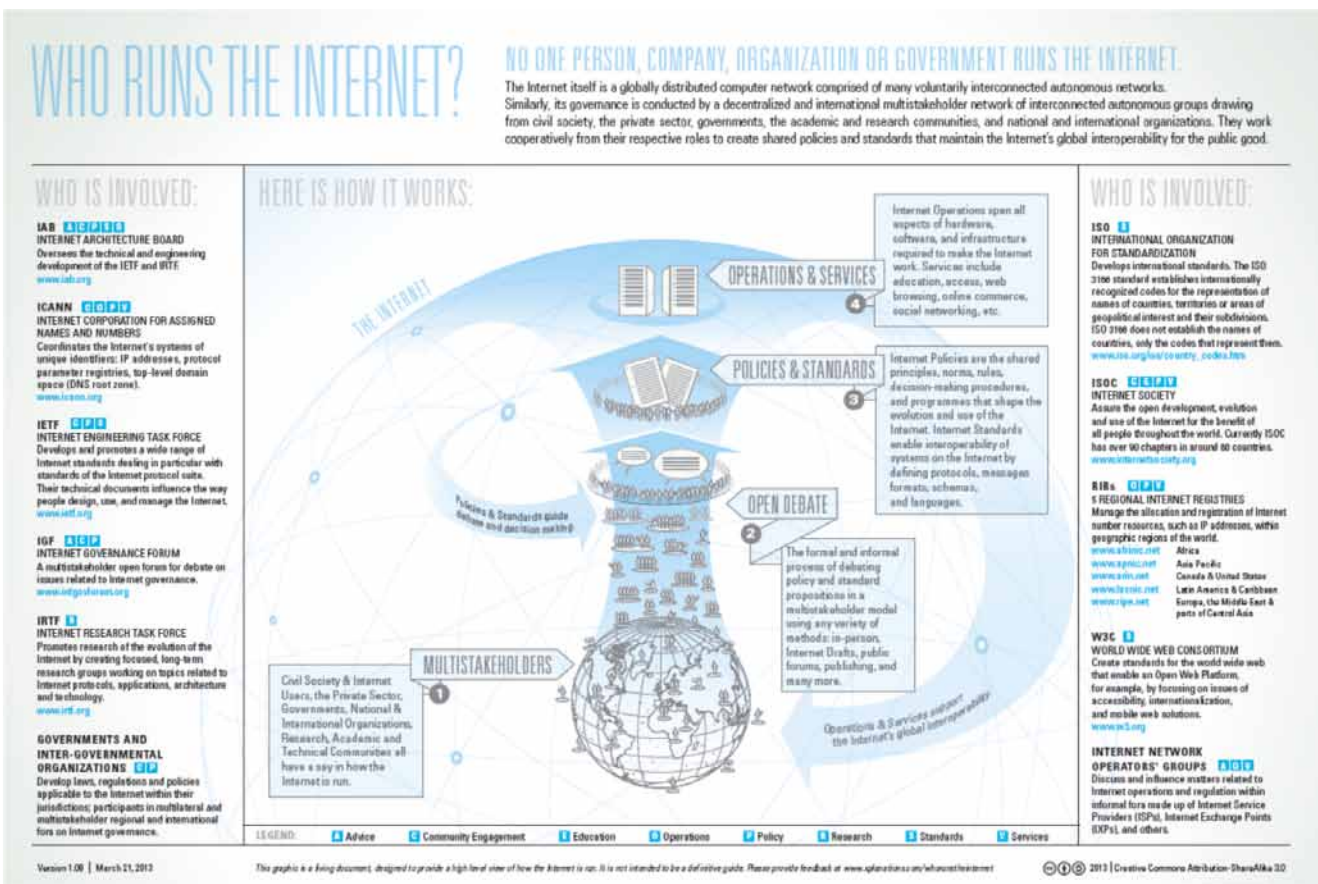
What is ICANN? .....	3
How is <a href="#">At-Large</a> organized? .....	4
What is the At-Large Community .....	5
How is the At-Large Community Organized .....	5
What is the At-Large Advisory Committee? .....	6
<a href="#">What is a Regional At-Large Organization (RALO)?</a> .....	7
What is an At-Large Structure (ALS)? .....	8
What type of groups can register as At-Large Structures? .....	8
Minimum criteria for an At-Large Structure .....	9
Why are ALSes vital to the Multi-Stakeholder Model? .....	9
Can my voice affect ICANN policy? .....	10
Public Comment Periods at ICANN .....	10
How is the ALAC's policy advice made? .....	11
How can I get engaged? .....	12
Working Groups .....	12
<del>Standing At-Large Working Groups</del> .....	12
Confluence Wiki Workspaces .....	15
<del>Important ICANN and At-Large websites</del> .....	16
At-Large and Regional Events Calendar .....	18
Adobe Connect Meeting Rooms .....	19
Quick Tips/Engagement Tools .....	20
FAQs .....	20
Resources .....	21

## What is ICANN?

ICANN is a not-for-profit, public-benefit corporation formed in 1998. Its Staff helps organize the voices of volunteers worldwide dedicated to keeping the Internet secure, stable and interoperable. ICANN promotes competition and helps develop Internet Policy.

Specifically, what ICANN does is coordinate the Internet's global Domain Name System (DNS) — that is, the system of unique addresses (in the form of names and numbers) used to reach every computer on the Internet. The DNS is a vital part of the Internet's infrastructure, without which the Internet could not function. Through its coordination of the DNS, ICANN plays an important role in the expansion and evolution of the Internet.

What ICANN does not do is control content on the Internet. It cannot stop spam and it does not deal with access to the Internet



Who runs the Internet? No one person, company, organization, or government runs the Internet.

## How is ICANN organized?

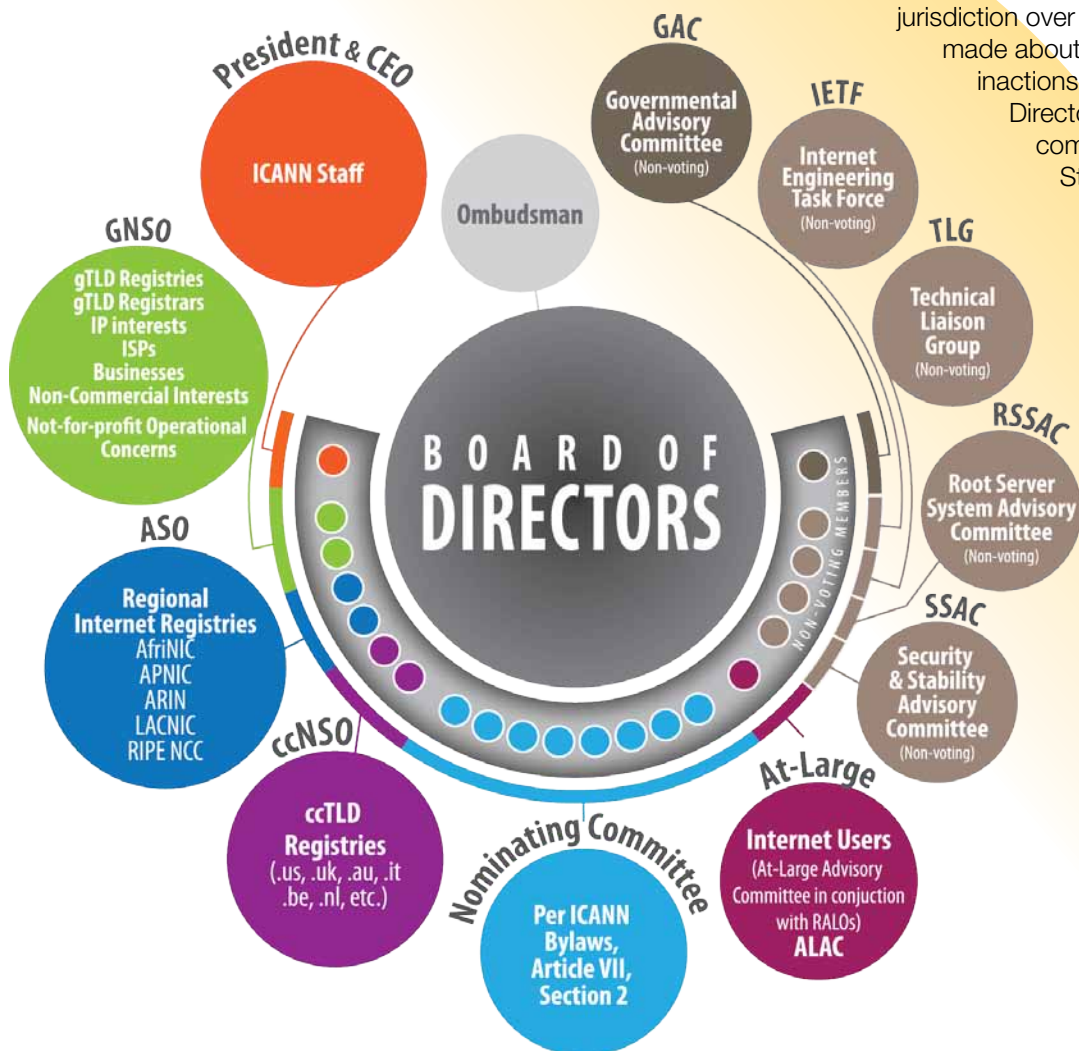
At the heart of ICANN's policy-making is what is called a "multistakeholder model." This decentralized governance model places individuals, industry, non-commercial interests and government on an equal level. Unlike more traditional, top-down governance models, where governments make policy decisions, the multistakeholder approach used by ICANN allows for community-based consensus-driven policy-making. The idea is that Internet governance should mimic the structure of the Internet itself – borderless and open to all.

While the **ICANN Board of Directors** has the ultimate authority to approve or reject policy recommendations, **Supporting Organizations** (SOs) are responsible for developing and making policy recommendations to the Board. **Advisory Committees** (ACs) advise the ICANN Board and, in certain cases, can raise issues for policy development.

**ICANN Staff** is responsible for implementing policies developed by the ICANN community and adopted by the ICANN Board.

The **ICANN Ombudsman** is an independent, impartial and neutral person contracted to ICANN, with jurisdiction over problems and complaints made about decisions, actions or inactions by ICANN, the Board of Directors, or unfair treatment of a community member by ICANN Staff, Board or a constituency body.

The **Nominating Committee** is a team of community volunteers responsible for the selection of eight ICANN Board members, and portions of the At-Large Advisory Committee, the Country Code Names Supporting Organization and the Generic Names Supporting Organization.



Multistakeholder model



## What is At-Large?

Within ICANN's multistakeholder model of policy development, At-Large is the community representing the best interest of individual Internet users.

## How is At-Large organized?

The At-Large Community has a bottom-up, tiered structure.

On the grassroots level, there are more than 165 At-Large Structures (ALSes). These local organizations of At-Large members are located throughout the world. The goal is ultimately to have at least one ALS in every country. Typically, an individual Internet user joins At-Large by joining one of its local ALSes. However, individuals may also participate without joining an ALS.

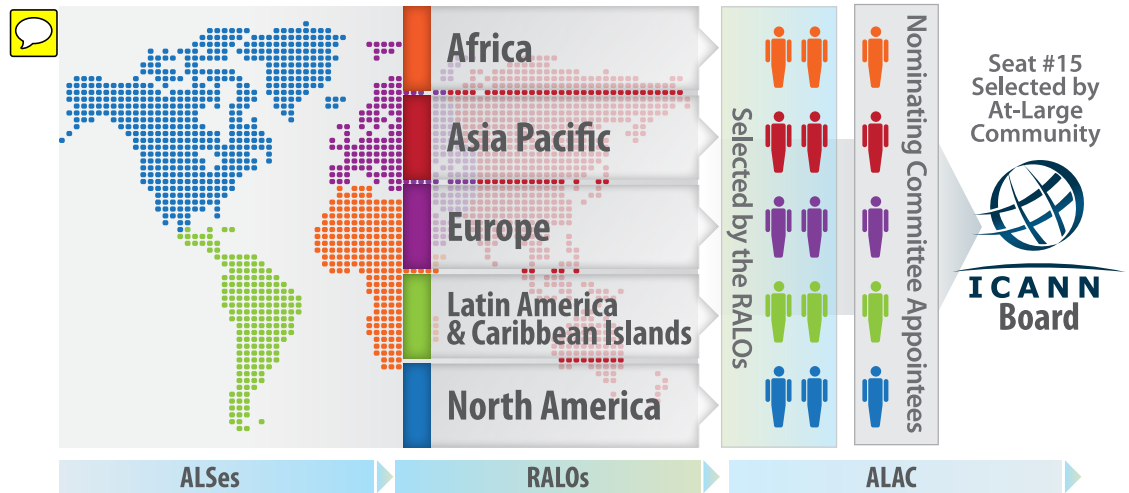


## ALS global distribution

The ALSes are organized by region into five Regional At-Large Organizations (RALOs).

**The following are the five RALOs:**

- African Regional At-Large Organization (AFRALO)
- Asian, Australasian and Pacific Islands Regional At-Large Organization (APRALO)
- European At-Large Organization (EURALO)
- Latin American and Caribbean Islands Regional At-Large Organization (LACRALO)
- North American Regional At-Large Organization (NARALO)



At-Large Organizational Chart

## What is the At-Large Advisory Committee?

The At-Large Advisory Committee (ALAC) is the primary organizational home within ICANN for individual Internet users. The role of the ALAC shall be to consider and provide advice on the activities of ICANN, insofar as they relate to the interests of individual Internet users. This includes policies created through ICANN's Supporting Organizations, as well as the many other issues for which community input and advice is appropriate. The ALAC, which plays an important role in ICANN's accountability mechanisms, also coordinates some of ICANN's outreach to individual Internet users.



According to ICANN's Bylaws (<http://www.icann.org/en/about/governance/bylaws>), the 15-member ALAC consists of two members selected by each of the Regional At-Large Organizations for a total of ten directly elected representatives, and five members selected by the Nominating Committee. The five members selected by the Nominating Committee shall include one citizen of a country within each of the five Geographic Regions.



## What is a Regional At-Large Organization (RALO)?

The Regional At-Large Organizations (RALOs) consist of accredited At-Large Structures (ALSes) to promote and ensure participation by regional Internet non-commercial users in the process of developing ICANN policies.

**The RALOs are guided by these key documents:**

### 1.1 Memorandum of Understanding

The Memorandum of Understanding (MOU) intends to establish and define activities to be carried out by RALO and supported by ICANN.

### 1.2 Operating Principles, Rules of Procedure, Regional Bylaws

The RALO operations are guided by a set of principles and procedures outlined in either the regional Operating Principles, Rules of Procedure and/or Bylaws.

**The regional organizing documents can be found online under:**

- AFRALO: <https://community.icann.org/display/AFRALO/AFRALO+MOU+and+Organising+Documents>
- APRALO: <https://community.icann.org/display/APRALO/RALO+Organising+Documents>
- EURALO: <https://community.icann.org/display/EURALO/RALO+Organising+Instruments>
- LACRALO: <https://community.icann.org/display/LACRALO/LACRALO+Organising+Documents>
- NARALO: <https://community.icann.org/display/NARALO/NARALO+Regional+Officers>

## What is an At-Large Structure (ALS)?

At-Large Structures are wholly independent from ICANN. Registration simply recognizes that these groups meet ICANN's criteria for involving individual Internet users at the local or issue level in ICANN activities, and for promoting individuals' understanding of, and participation in, ICANN.

### By being designated an At-Large Structure, a group gets:

- A recognized role in forming the policies that affect how individuals' use the Internet (ICANN is listening. Make sure your voice is heard!);
- Quick and easy access to first-hand information on what's happening in ICANN and why it matters to end-users;
- Opportunities to provide your members education on ICANN's work and Internet developments;
- Participation in building your region's At-Large organization (RALO), and opportunities to network with other groups in your country and region as At-Large grows;
- Representation in ICANN at the regional and international level, plus your group's members will be eligible to serve on important regional and international decision-making bodies in ICANN;
- A free wiki page and other Internet-based mechanisms to support your group's work;
- Opportunities for grant funding to support some of your group's activities (ALAC applies for grant funding as opportunities arise).



## What type of groups can register as At-Large Structures?

Any group that supports individuals' ability to share their views on ICANN issues, and that meets the few simple criteria, can register to be an At-Large Structure. Types of groups that have registered (or have expressed interest in registering) as At-Large Structures include:

- Professional societies (e.g. engineers, attorneys, etc.)
- Academic and research organizations
- Community networking groups
- Consumer advocacy groups
- Internet Society chapters
- Computer user organizations
- Internet civil society groups

## Where can I get more information?

Three members from each of ICANN's five geographic regions represent the At-Large community as members of the At-Large Advisory Committee. They can be reached on the forums on this website, or by sending an email to [staff@atlarge.icann.org](mailto:staff@atlarge.icann.org).



## Minimum criteria for an ~~At-Large Structure~~

The following is a list of minimum criteria to becoming an ~~At-Large Structure~~:

1. Commit to supporting individual Internet users' informed participation in ICANN by distributing to individual constituents/members information on relevant ICANN activities and issues, offering Internet-based mechanisms that enable discussions of one or more of these activities and issues among individual constituents/members, and involving individual constituents/members in relevant ICANN policy development, discussions and decisions.
2. Be constituted so that participation by individual Internet users who are citizens or residents of countries within the Geographic Region in which the ALS is based will predominate in the ALS' operation. The ALS may permit additional participation by others that is compatible with the interests of the individual Internet users within the region.
3. Be self-supporting (not rely on ICANN for funding).
4. Post on the Internet (on the ALAC's website or elsewhere) publicly- accessible, current information about the ALS's goals, structure, description of constituent group(s)/ membership, working mechanisms, leadership, and contact(s).
5. Assist the RALO in performing its function.

## Why are ~~ALSes~~ vital to the Multi-Stakeholder Model?

Ultimately, the Internet is a network that serves end users like you.

At ICANN, you'll hear a lot about our bottom-up, consensus-driven multistakeholder process. This means that every individual involved in the process has a voice and can be heard. Every viewpoint added to the ICANN community makes our decisions richer.

~~The first step to keeping the Internet user centric is input from end users on the Domain Name System.~~

## Can my voice ~~affect~~ ICANN policy?

Absolutely. You, as an individual Internet user, have a voice in policy-making at ICANN and the ICANN community wants to hear more from you.

A good example of how At-Large has used this bottom-up, consensus-driven process to affect ICANN policy can be seen in the case of "domain name tasting." At-Large played an important role in halting an abusive Internet practice.



## Case Study

### Domain name tasting abuses dowsed by At-Large community

Members of the At-Large Community were instrumental in ending the abusive practice of domain name tasting through their advocacy for a formal review of the issue by ICANN's Generic Names Supporting Organization (GNSO).

Domain tasting takes place when an entity registers a domain name and then tests to see if the name has sufficient traffic to provide more income than the annual registration fee (usually through pay-per-click advertising). If the name is profitable, it is kept. If not, the registrant returns the domain at no cost during what is called the "Add Grace Period" or AGP. The AGP says that if you registered a domain mistakenly, you can return the domain in five days and you will be charged nothing. Unscrupulous registrants registered domain names by the millions, used them for a few days, then returned them and registered millions more. They could make pay-per-click ad revenue off their domains, at the registries' expense. Seeing the potential abuse of this practice, a group of individual At-Large members worked to gain the support of the At-Large Advisory Committee (ALAC), the community's leadership body, in opposing domain tasting. In May 2007, the ALAC requested a formal review of the practice by the GNSO Council, the ICANN body that oversees policy development on behalf of generic top-level domains (gTLDs).



## Public Comment Periods at ICANN

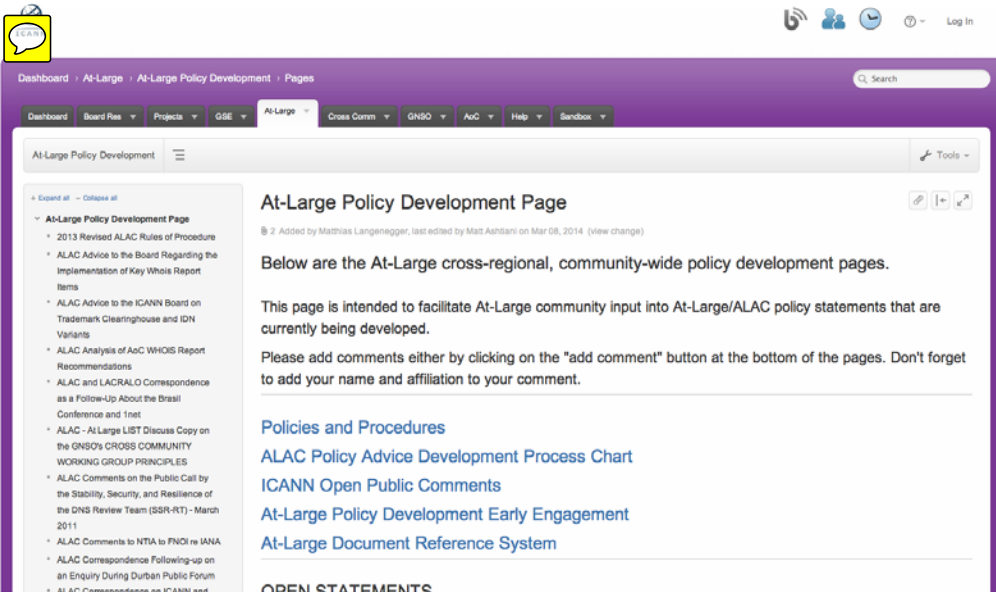
A vital element in ICANN's processes is the opportunity for Public Comment (PC) on each substantial piece of work before it is considered for approval. These topics can be operational (such as budget or strategic planning), technical (such as security reports and recommendations) or policy oriented (such as Bylaw changes).

### The following principles guide the PC process:

- Each item posted for PC is available for a minimum of 21 days;
- If comments are received, then at the close of the comment period, a reply period begins, lasting a minimum of 21 days;
- If no substantive comments are received during the comment period, then there will be no reply period; and
- During the reply period, participants should address previous comments submitted; new posts concerning the topic should not be introduced. When constructing replies, contributors are asked to cite the original poster's name, comment date, and any particular text that is pertinent.

You can find a list of all topics open for public comment on a dedicated PC page ([www.icann.org/en/news/public-comment](http://www.icann.org/en/news/public-comment)). The page includes links to relevant announcements, documents, comment locations, and reference sources with full descriptions and background information.

After the comment period is closed, Staff publishes a comment summary report that is archived along with all PC documentation and comments received.



## How is the ALAC's policy advice made?

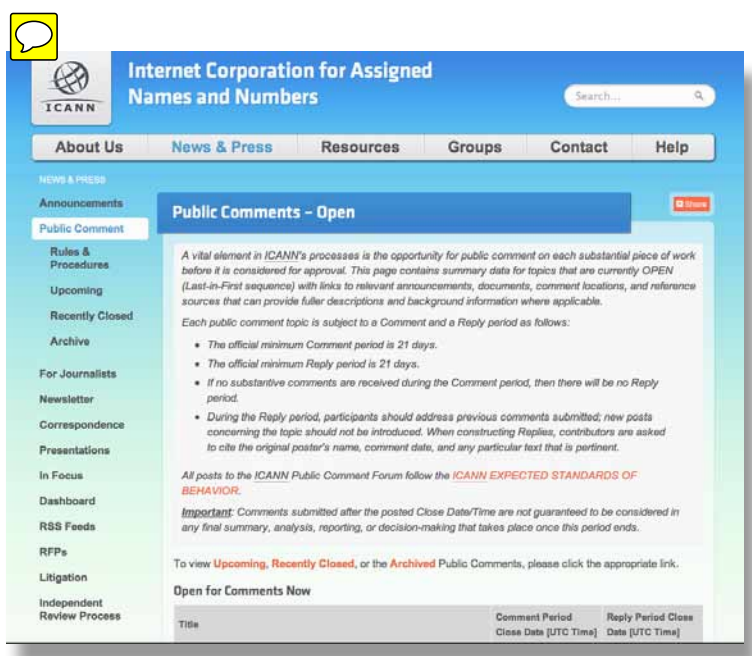
When a new Public Comment is open, the ALAC will review it. After consultations via mailing lists and teleconferences, the ALAC will come to a consensus on determining if a Statement on the PG is necessary. If so, ICANN Policy Staff in support of the ALAC will create a wiki page for the Statement on the At-Large Policy Development Page (<https://community.icann.org/x/bwFO>).

Once the wiki page has been created, the ALAC works to identify an individual, or a group of individuals, responsible for writing an initial draft Statement in response to the PG. Once the initial draft is completed, Staff posts it to the corresponding workspace.

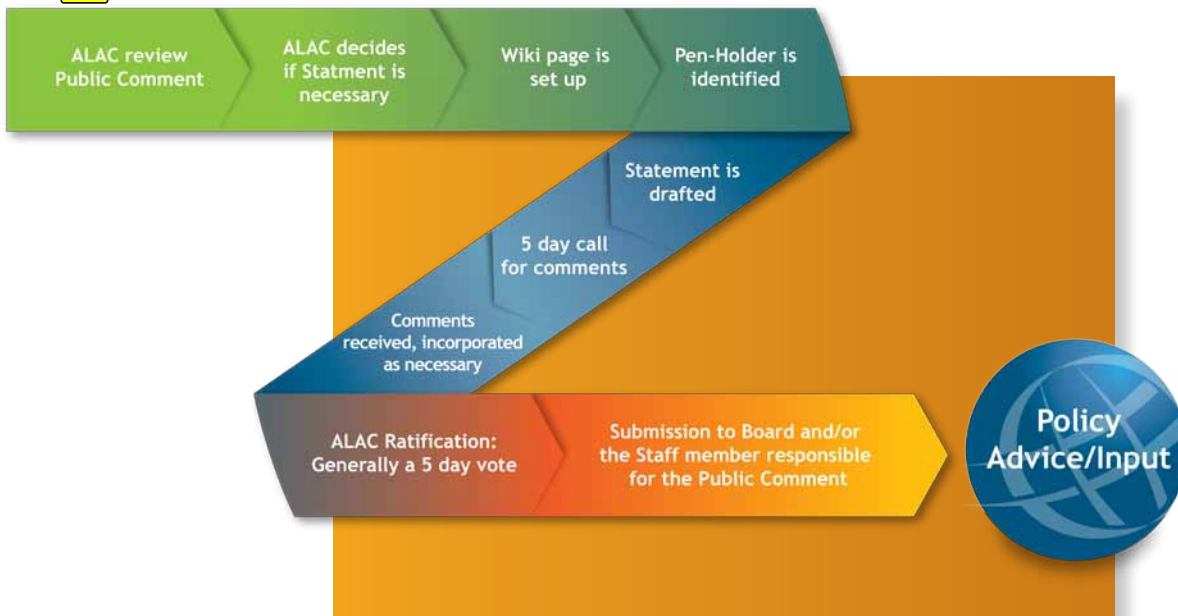
Staff then issues a five-day Call for Comments to At-Large members via the mailing lists. At-Large members then provide input on the initial draft.

Once the Call for Comments has ended, the input received is incorporated into the draft via consensus.

The ALAC then holds a five-day ratification vote to determine if the draft is approved. If it is approved, the Statement is submitted to the ICANN Board as well as the ICANN Staff member responsible for the PG.



Screenshot of 'Call for Comments' section on the ICANN website.



ALAC policy development process

## How can I get engaged?

The following section contains information on how to become active in At-Large. It describes the working groups, mailing lists, confluence wiki workspace, calendar events, teleconference meetings, and contains useful general information.

## Working Groups

The At-Large working groups are the main entities for individual Internet users to discuss current ICANN policy issues and prepare Statements and Position Papers.

The At-Large Advisory Committee regularly asks the working groups to help them develop a formal position for a public consultation and the ICANN Board of Directors.

The working groups are composed of members from the ALAC and the wider At-Large community.

There are standing working groups, ad-hoc working groups, cross-constituency working groups, and general working groups that ALSes can participate in. A full list of working groups is available online at <https://community.icann.org/x/!oli>.



## ALAC Sub-Committees

There are currently three ALAC Sub-Committees:

- **ALAC Subcommittee on Finance and Budget:** This Working Group focuses on issues related to the ICANN Budget, including development, and RALO Requests for upcoming budgets.
- **ALAC Subcommittee on Outreach:** This Working Group functions to oversee and coordinate the outreach efforts of the At-Large. This Working Group is currently focusing on the newly implemented Community Regional Outreach Pilot Program (CROPP), which aims to build local/regional awareness and recruitment of new community members, more effectively engaging with current members and/or “re-activating” previously engaged ICANN community members, and communicating ICANN’s mission and objectives to new audiences.
- **At-Large Sub-Committee on Metrics:** This Working Group works to evaluate the participation of At-Large members.





## Standing ~~At-Large~~ Working Groups

There are currently six standing ~~At-Large~~ Working Groups:

- **At-Large Capacity Building Working Group:** This Working Group focuses on the capacity building activities within At-Large. Specifically, the group focuses on face-to-face meetings, online group activities, social media, and other methods of capacity building.
- ~~At-Large WG on Future Challenges:~~ This Working Group aims to identify upcoming challenge and to address them in the hope of maximizing the effectiveness of At-Large.
- **IDN Policy:** This Working Group functions to address challenges and promote knowledge regarding the implementation of Internationalized Domain Names (IDNs) in the Root Zone.
- **At-Large New gTLDs Working Group:** This Working Group was established to follow developments related to the implementation of New gTLDs. Currently, the group reviews the New gTLD Objection Process, Applicant Support Issues, Outreach and Evaluations Recommendations, and New gTLD Rollout Issues.
- **At-Large Registration Issues Working Group:** This Working Group reviews the entire scope of the RAA (Registrar Accreditation Agreement), and recommends concrete steps that should be taken by the larger At-Large community. It also looks at the challenges faced by Registrants and seeks to make recommendations to mediate these challenges.
- **Technical Issues:** This Working Group focuses on the stability, safety and security of Domain Name System (DNS). Among the issues covered by this group are DNS-SEC, DNS Exploitation Techniques such as Fast Flux Hosting and issues concerning the implementation of IPv6.



## Ad-Hoc ~~At-Large~~ Working Groups

There are currently ten standing ~~At-Large~~ Working Groups:

- **At-Large Ad-Hoc ICANN Accessibility Working Group:** This WG will work on the issues surrounding the particular needs of populations who face challenges to participate in the policy development work of ICANN and gain access to the Internet and join the Information Society.
- **At-Large Community Regional Outreach Pilot Program Review Team (CROPP RT):** This Working Group was chartered by the ALAC to coordinate and manage the ALAC's efforts related to the Community Regional Outreach Pilot Program (CROPP). CROPP is designed to build local/regional awareness and recruitment of new community members; more effectively engage with current members and/or "reactivating" previously engaged ICANN community members; and communicate ICANN's mission and objectives to new audiences.
- **At-Large ICANN Academy Ad-Hoc Working Group:** This Working Group was chartered to assist in the development of a Leadership Academy within ICANN.
- ~~At-Large Improvements Project Taskforce:~~ This Working Group was chartered to oversee the implementation of the improvements made by an earlier review process.
- ~~At-Large New gTLDs Review Group:~~ This Working Group is responsible for receiving the comments from At-Large either directly via email or indirectly via RALO conference calls; informing RALOs of deadlines for comments during the ACP, and for objection statements during the objection period; reviewing the comments/objections received and giving ALAC its recommendations on them; and composing the final draft of the comments/objections agreed on in close cooperation with their original authors.





- ~~**At Large Summit II Organizing Committee:** This Working Group (ATLAS II) will work with the ALAC Finance and Budget Sub-Committee on developing the request for the second At Large Summit. If the request is approved, the members of the ATLAS II will work together with the At Large community to organize the meetings, plan activities, and plan the logistics of the second At Large Summit.~~
- **At-Large Technology Taskforce Working Group:** This Working Group was chartered to introduce to the ALSes selected information, dissemination, communication and collaboration tools (such as Posterous, Twitter Tweets, mobile device compatibility) and provide training. It is also used to review of communication and collaboration needs considered unmet by ALSes and RALOs globally.
- ~~**Board Candidate Evaluation Committee (BCEC):** Per ALAC Rules of Procedure 19.3, this Working Group was chartered to compile an initial slate of candidates for the election to Seat 15 of an ICANN Board member. The BCEC consists of two delegates selected by each of the RALOs plus a chair selected by the ALAC and is convened for each Board seat selection process.~~
- ~~**Board Member Selection Process Committee (BMSPC):** Per ALAC Rules of Procedure 19.2, this Working Group was chartered to oversee the entire selection process including the election culminating the process but excluding those responsibilities specifically retained by the ALAC or given to the Board Candidate Evaluation Committee. The composition of the BMSPC is regionally balanced and the committee is typically populated with no fewer than two representatives of each region selected by both the ALAC and the RALOs.~~
- ~~**ccNSO/At Large Coordination** This Working Group is chaired by the ALAC Liaison to the ccNSO Council and works to ensure greater collaboration between the two groups.~~



## Mailing Lists:

### **ALAC-Announce** - [alac-announce@atlarge-lists.icann.org](mailto:alac-announce@atlarge-lists.icann.org)

This mailing list is used for announcements from ICANN Policy Staff in support of the ALAC and the ALAC Chairperson to the At-Large Community. All members of the At-Large Advisory Committee (ALAC), officers of Regional At-Large Organizations (RALOs) and representatives of At-Large Structures (ALSes) are automatically subscribed to the ALAC-Announce list. Only ICANN Policy Staff in support of the ALAC and the ALAC Chairperson can publish on this list. The list is publicly visible and everybody can subscribe to it.

### **Mailing lists of the RALOs**

All ALS representatives are automatically subscribed to the mailing list of their region. The regional lists are publicly visible, and everybody can subscribe to them. ~~Here is a list of the regional mailing lists:~~

Asian, Australasian and Pacific Islands Regional At-Large Organization (APRALO):

<http://atlarge-lists.icann.org/pipermail/apac-discuss/apac-discuss>

African Regional At-Large Organization (AFRALO):

<http://atlarge-lists.icann.org/pipermail/afri-discuss/afri-discuss>

European Regional At-Large Organization (EURALO):

<http://atlarge-lists.icann.org/pipermail/euro-discuss/euro-discuss>

Latin American and Caribbean Islands Regional At-Large Organization (LACRALO):

<http://atlarge-lists.icann.org/pipermail/lac-discuss-en/lac-discuss-en> (English)

<http://atlarge-lists.icann.org/pipermail/lac-discuss-es/lac-discuss-es> (Spanish)

North American Regional At-Large Organization (NARALO):

<http://atlarge-lists.icann.org/pipermail/na-discuss/na-discuss>

There are several other mailing lists available to ALSes. ALSes can subscribe independently to any of these public At-Large mailing lists, which are available under:

<https://atlarge-lists.icann.org/mailman/listinfo>

In particular, we would like to point out two mailing lists in which may be of interest to various ALS members:

<http://atlarge-lists.icann.org/pipermail/at-large/at-large>

This is the worldwide At-Large mailing list used to discuss policy matters. It is publicly visible, and anyone can subscribe to it.

<http://atlarge-lists.icann.org/pipermail/alac/alac>

This mailing list is used for the ALAC's policy discussions. It is not publicly listed, and only ALAC members, RALO officers and liaisons from the ALAC to other ICANN bodies are subscribed to it. However, the **archive** is publicly visible.

## Confluence Wiki Workspaces

### Regional Wiki Workspaces

~~ALSes can gain editing rights to the RALO's online Confluence wiki workspace. (A wiki is a Web site that allows the easy creation and editing of any number of interlinked Web pages, via a Web browser, using a simplified markup language or text editor.)~~

The RALO wikis are an important source for information on current RALO activities. **Perhaps most important**, information on upcoming and past meetings – including agendas, summary minutes, action items and recordings – can be found on the RALO wikis. In addition to the regional wiki workspaces, there are wikis for the ALAC, the regional secretariats, the ALAC liaisons, At-Large working groups and each individual ALS.

### The RALO wikis can be found at the following URLs:

- <https://community.icann.org/display/AFRALO>
- <https://community.icann.org/display/APRALO>
- <https://community.icann.org/display/EURALO>
- <https://community.icann.org/display/LACRALO>
- <https://community.icann.org/display/NARALO>

### The Secretariat workspace can be found at:

- <https://community.icann.org/x/OpQi>



### The At-Large Wiki Guide is available in the six UN languages at:

- <https://community.icann.org/display/atlarge/At+Large+Wiki+Training+Guides>

~~In addition to the regional wiki workspaces, there are wikis for the ALAC, the regional secretariats, the ALAC liaisons, At-Large working groups and each individual ALS.~~

## **The ICANN Policy Staff in support of the ALAC**

The ICANN Policy Staff in support of the ALAC both act as the liaison between ICANN and the At-Large Community and provide a number of services to the At-Large Community, including the organization of all conference calls and face-to-face meetings.



~~The secretariats help coordinate regional activities such as conference calls, working groups and outreach events. They are also responsible for documents such as meeting minutes, action items and the monthly and quarterly RALO reports. Along with the RALO chairs and vice chairs and the supporting Staff, the secretariats are the main contact point for everything related to your At-Large region. An email can be sent to [staff@at-large.icann.org](mailto:staff@at-large.icann.org) in order to get the contact details of a regional secretariat.~~

## **ALAC Liaisons**

The ALAC liaisons help ensure that At-Large can participate effectively in all parts of ICANN. Liaisons are elected from within the At-Large Community and participate in the work of the other “organs” of ICANN as observers. The ALAC currently has six liaisons. (Further information is available at <http://www.atlarge.icann.org/liaisons>.)

~~The wiki workspaces of the ALAC, ALAC liaisons, working groups and At-Large Structures can be found at the main portal, which is also known as the At-Large Dashboard: <https://community.icann.org/display/atlarge>~~

## **Important ICANN and At-Large websites**

In addition to the collaboration tools outlined above, there are other websites that are of use.

**At-Large Homepage:** [www.atlarge.icann.org](http://www.atlarge.icann.org)

This is the main starting point for news and reference documents about the At-Large Community.

In particular, most ALSes will likely be interested in the following webpages.

- ~~At-Large organizational diagram:~~ <http://www.atlarge.icann.org/orgchart>
- ~~At-Large announcements:~~ <http://www.atlarge.icann.org/en/atlarge/announcements/en>
- Correspondence (policy statements and advisories): <http://www.atlarge.icann.org/correspondence>





- Educational documents on policy issues from an Internet user perspective: <http://www.atlarge.icann.org/issues>
- At-Large community background information: <http://www.atlarge.icann.org/en/whatis.htm>
- RALO details (such as member organizations, officers, etc.): <http://www.atlarge.icann.org/regions>
- ALAC details (such as current members and officers, etc.): <http://www.atlarge.icann.org/alac>
- ICANN e-Learning page (included podcasts, webinars and Beginners' Guides) <http://icann.org/en/learning/>

## ICANN Homepage: [www.icann.org](http://www.icann.org)

In particular, most ALSes will likely be interested in the following webpages.

- ICANN Learn, which contains capacity building modules: <https://learn.icann.org>
- ICANN for newcomers: <http://www.icann.org/new.html>
- ICANN organizational structure diagram: <http://www.icann.org/en/structure/>
- ICANN background information: <http://www.icann.org/en/about/>
- What does ICANN do? <http://www.icann.org/en/participate/what-icann-do.html>
- What is ICANN's effect on the Internet?  
<http://www.icann.org/en/participate/effect-on-internet.html>
- E-Learning section: <http://www.icann.org/en/learning/>
- ICANN glossary: <http://www.icann.org/en/general/glossary.htm> (see also ICANN acronym helper: <http://www.andalucia.com/icann/>)
- Key ICANN topics: <http://www.icann.org/en/topics/>
- Key ICANN documents: <http://www.icann.org/en/documents/>
- Current ICANN policy development areas: <http://www.icann.org/en/policy/>
- ICANN announcements: <http://www.icann.org/en/announcements/>
- International ICANN meetings: <http://meetings.icann.org/>
- Public consultation page: <http://www.icann.org/en/public-comment/>
- ICANN Bylaws: <http://www.icann.org/en/general/bylaws.htm>
- ICANN Board: <http://www.icann.org/en/general/board.html>



The screenshot shows a browser window with the address bar displaying <http://www.icann.org/>. The page title is "Internet Corporation for Assigned Names and Numbers | ICANN". The browser's address bar also shows "icann public comment" with a search icon. The website header features the ICANN logo on the left, the text "Internet Corporation for Assigned Names and Numbers" in the center, and a search bar on the right. Below the header is a navigation menu with links for "About Us", "News & Press", "Resources", "Groups", "Contact", and "Help". The main content area includes a banner for "Join NETmundial In São Paulo!" and a section for the "Global Multistakeholder Meeting on the Future of Internet Governance".



## At-Large Social Media Tools

### At-Large Facebook Page

~~You may wish to join the At-Large Facebook fan page at:~~  
~~<http://www.facebook.com/icann.atlarge>~~

Please note that, depending on your geographical region, you may or may not be able to use the At-Large Facebook page.

### ~~At-Large LinkedIn Page~~

~~A group for registered members of ICANN's At-Large Community has been set up on LinkedIn at:~~  
~~[www.linkedin.com/groups?home=&gid=2238621](http://www.linkedin.com/groups?home=&gid=2238621)~~

### At-Large YouTube Page

~~You may wish to view At-Large community videos on the At-Large YouTube page at:~~  
~~[http://www.youtube.com/channel/UCB90oKfADBDJ\\_KE2PraE1sA](http://www.youtube.com/channel/UCB90oKfADBDJ_KE2PraE1sA)~~

## At-Large and Regional Events Calendar

### At-Large Calendar

The At-Large Google calendar at <http://www.atlarge.icann.org/calendar> shows all At-Large meetings and teleconferences, including those of the ALAC, ALAC Executive Committee, RALOs and At-Large working groups. All At-Large meetings are highlighted in blue.

Among the teleconferences shown on this calendar is the regular monthly teleconference held by each RALO. These teleconferences last between 60 and 90 minutes. Details of these calls, including agenda details and participation instructions, are posted to the RALO's mailing list in advance.

Please note that, depending on an ALSes' geographical region, an ALS might not be able to use the At-Large Google calendar.

### Regional Events Calendar

In addition, there is an external regional events calendar incorporated into the general At-Large calendar. This regional events calendar highlights the Internet Governance events taking place in the various regions. This calendar is used to track events that take place outside of ICANN but that are attended by At-Large members and ICANN Staff. These regional events are highlighted in yellow.

To ensure that this regional events calendar remains reasonably complete, the RALO officers check regularly with their regional colleagues regarding upcoming events. Such events might include meetings of regional country code top-level domain (ccTLD) managers, regional Internet registries (RIR), number resource organizations (NRO) and regional Internet Governance forums, among others.

If an ALS would like to add an event to the external regional events calendar, an ALS should use its RALO's mailing list to contact its regional officers. ~~The RALO officers are listed on the following wiki pages:~~





- AFRALO Officers: ~~<https://community.icann.org/display/AFRALO/AFRALO+Regional+Officers>~~ (short URL: ~~<https://community.icann.org/x/WYEi>~~)
- APRALO Officers: ~~<https://community.icann.org/display/APRALO/Regional+Leaders>~~ (short URL: ~~<https://community.icann.org/x/n4gi>~~)
- EURALO Officers: ~~<https://community.icann.org/display/EURALO/Board+and+Officers>~~ (short URL: ~~<https://community.icann.org/x/xlki>~~)
- LACRALO Officers: ~~<https://community.icann.org/display/LACRALO/LACRALO+Regional+Leaders>~~ (short URL: ~~<https://community.icann.org/x/r4wi>~~)
- NARALO Officers: ~~<https://community.icann.org/display/NARALO/NARALO+Regional+Officers>~~ (short URL: ~~[https://community.icann.org/x/\\_40i](https://community.icann.org/x/_40i)~~)

## Adobe Connect Meeting Rooms

During both its teleconferences and face-to-face meetings, the At-Large Community uses Adobe Connect meeting rooms. These online Adobe Connect rooms provide a single user interface participants can use to instant message each other, review the meeting agenda and documents, follow presentations and raise their hands in order to make comments.

For some meetings, it is possible to use the Adobe Connect room to listen to the meeting's audio, rather than using the available telephone bridge. However, many At-Large calls are simultaneously interpreted into more than one language, and at present it is not possible to choose different language channels through Adobe Connect.

The URL to the Adobe Connect room for any given At-Large meeting is located on the meeting's wiki page that also contains the meeting's agenda. (The URL is usually located above the agenda.)

Further information on Adobe Connect, including a visual "quick start" guide, video tutorials and an FAQ section can be found at:

~~<https://community.icann.org/display/atlarge/At+Large+Community+Information+on+Adobe+Connect+8>~~

In addition, each PALO has an Adobe Connect room available for use by its ALSes (for example, to facilitate the ALSes' individual meetings). These Adobe Connect rooms can be found at the following URLs:

- AFRALO: ~~<http://icann.adobeconnect.com/afraloals/>~~
- APRALO: ~~<http://icann.adobeconnect.com/apraloals/>~~
- EURALO: ~~<http://icann.adobeconnect.com/euraloals/>~~
- LACRALO: ~~<http://icann.adobeconnect.com/lacraloals/>~~
- NARALO: ~~<http://icann.adobeconnect.com/naraloals/>~~

## Join Us

If a group you are involved with wants to influence decisions that shape the Internet, register as an "At-Large Structure" and participate in ICANN decisions critical to the Internet's end users. "At-Large Structure" registration is free, easy, and done via email. Groups interested participating in ICANN At-Large are encouraged to send an email to [staff@atlarge.icann.org](mailto:staff@atlarge.icann.org) or get more information and an application online: ~~<http://atlarge.icann.org/correspondence/structures-app.htm>~~

## ~~Quick Tips/Engagement Tools~~

If you have questions regarding any information in this Beginner's Guide, please do not hesitate to contact the At-Large Staff at [staff@atlarge.icann.org](mailto:staff@atlarge.icann.org).



### ~~FAQs~~

#### ~~Do I have to be an ALS to be on a RALO teleconference?~~

~~No!~~ You can participate in any of the following teleconferences:

- ~~• African Regional At-Large Organization (AFRALO) Teleconferences~~
- ~~• Asian, Australasian and Pacific Islands Regional At-Large Organization (APRALO) Teleconferences~~
- ~~• European At-Large Organization (EURALO) Teleconferences~~
- ~~• Latin American and Caribbean Islands Regional At-Large Organization (LAGRALO) Teleconference~~
- ~~• North American Regional At-Large Organization (NARALO) Teleconferences~~

#### ~~Do I have to be an ALAC member to be on an ALAC teleconference?~~

~~No!~~ All ALAC meetings are open. ALAC meeting agendas are available at:

~~[https://community.icann.org/x/\\_pQi](https://community.icann.org/x/_pQi)~~

#### ~~Do I have to be an ALS Representative to be in a Working Group or to contribute in other ways?~~

~~No!~~

### ~~Beginner's guides~~

~~Providing a basic yet comprehensive overview on a variety of topics:~~

- ~~• Beginner's Guide to Participating in At-Large~~
- ~~• Beginner's Guide to Participating in ICANN~~
- ~~• At-Large Wiki Training Guides~~

### ~~Brochures~~

~~Providing a quick look at At-Large and each RALO:~~

- ~~• At-Large~~
- ~~• African Regional At-Large Organization (AFRALO)~~
- ~~• Asian, Australasian and Pacific Islands Regional At-Large Organization (APRALO)~~
- ~~• European At-Large Organization (EURALO)~~
- ~~• Latin American and Caribbean Islands Regional At-Large Organization (LAGRALO)~~
- ~~• North American Regional At-Large Organization (NARALO)~~





## At-Large Structures

- ~~How can I get involved?~~
- ~~What groups can become ALSes?~~
- ~~Why become an ALS?~~
- ~~Join Us!~~
- ~~ALS Starter Kit~~

## Media

- ~~Podcast on "What is ALAC and At Large" by the ALAC Chair, Olivier Crépin-Leblond~~
- ~~PowerPoint on "The At Large Advisory Committee (ALAC) and the At Large Community" by the ALAC Chair, Olivier Crépin-Leblond~~
- ~~PowerPoint on "At Large and At Large Advisory Committee 101" by ICANN Board member, Sébastien Bachollet~~
- ~~Webinar ICANN Mission, Structure and Constituencies~~
- ~~Webinar ICANN's role in the infrastructure of the Internet and ICANN Public Participation and Communication~~
- ~~Webinar How you can help shape the future on the internet?~~

## Social Media

- ~~Facebook~~
- ~~Twitter~~
- ~~YouTube~~
- ~~[myicann.org](http://myicann.org)~~



# Glossary

**ALAC** The At-Large Advisory Committee is the primary organizational home for the voice and concerns of the individual Internet user in ICANN processes. Within the At-Large community, global users are represented through small self-forming groups called At-Large Structures (ALSes) who are part of Regional At-Large Organizations (RALOs).

**ASO** The Address Supporting Organization represents the Regional Internet Registries (RIRs) – companies that oversee the allocation of Internet number resources in particular geographic regions. Only representatives of RIRs may join.

**ATRT** A team of community representatives responsible for reviewing ICANN's accountability, transparency and pursuit of the interests of global Internet users.

**BCUC** The Business and Commercial Users Constituency is one of the constituencies of the Generic Names Supporting Organization and the voice of commercial and business users within ICANN processes.

**ccNSO** The Country Code Names Supporting Organization represents the managers of country-code top-level domains (ccTLDs) such as Britain's .UK or Germany's .DE registry. You have to be a ccTLD manager to join

**DNS** The Domain Name System allows Internet users to type in names, like [www.icann.org](http://www.icann.org), and be directed to a machine-understandable unique Internet Protocol address like 192.0.34.163.

**DNSSEC** Domain Name System Security Extensions introduce security at the infrastructure level through a hierarchy of cryptographic signatures attached to DNS records. Users are assured that the source of the data is verifiably the stated source, and that the mapping of name to Internet Protocol address is accurate.

**GAC** The Governmental Advisory Committee represents governments and governmental organizations. You need to be a formally acknowledged representative of a government or international organization to become a member.

**gTLD** A generic Top-Level Domain is an Internet domain name extension of three letters or more, such as .COM, .NET and .ASIA.

**GNSO** The Generic Names Supporting Organization is the main policy-making body for generic top-level domains and consists of seven sub-groups:

- Commercial and Business Users
- Non-Commercial Users
- gTLD Registries
- Registrars
- Intellectual Property
- Internet Service Providers and Connectivity Providers
- Not-For-Profit Operational Concerns Constituency

**IANA** The Internet Assigned Numbers Authority is responsible for the allocation and maintenance of the unique codes and numbering systems that are used in the technical standards ("protocols") that drive the Domain Name System. For more than a decade, ICANN has performed the IANA functions.

**IDN** Internationalized Domain Names include characters used in the local representation of languages that are not written with the 26 letters of the basic Latin alphabet.

**IPC** The Intellectual Property Constituency is one of four constituencies of the Generic Names Supporting Organization. It represents the views and interests of owners of intellectual property worldwide with particular emphasis on trademark, copyright, and related intellectual property rights and their effect and interaction with Domain Name System.

**IPv4** The original Internet Protocol, version 4, was developed in the early 1980s. It had a capacity of just over four billion IP addresses, all of which have been fully allocated to Internet service providers and users. An IPv4 address looks like this: 192.0.2.53.

**IPv6** Internet Protocol version 6 has a 128-bit address space, which is 340 undecillion addresses. An IPv6 address looks like this: 2001:0db8::53. Where there are two colons side by side, all the segments in between contain only zeros. So without the double colons, you would expand the example address to 2001:0db8:0000:0000:0000:0000:0053.

**IRTP** The Inter-Registrar Transfer Policy is a GNSO consensus policy that was adopted in 2004 with the objective to provide registrants with a transparent and predictable way to transfer domain name registrations between registrars.

**ISPCP** The Internet Service Providers Constituency is a constituency of the Generic Names Supporting Organization charged with the responsibility of advising the ICANN Board on policy issues relating to the management of the Domain Name System.

**NCSG** The Non-commercial Stakeholders Group is the home for civil society in ICANN's Generic Names Supporting Organization, created as one of four Stakeholder Groups in the GNSO and approved by the ICANN Board in 2008. Membership is open to non-commercial organizations and individuals involved in education, digital rights, community networking, public policy advocacy and many other areas.

**NCUC** The Non-commercial Users Constituency is a constituency within the GNSO's Non-commercial Stakeholders Group that represents the views of non-commercial individuals and non-profit organizations.

**NGPC** The New gTLD Program Committee is a committee of the ICANN Board responsible for making strategic and financial decisions relating to the New gTLD Program. It has all the powers of the ICANN Board.

**NPOC** The Not-for-profit Operational Concerns Constituency is found within the Generic Names Supporting Organization's Non-commercial Stakeholders Group and represents non-profit organizations who have operational concerns related to service delivery.

**PDP** The Policy Development Process is a set of formal steps, as defined in the ICANN Bylaws, to guide the initiation, internal and external review, timing and approval of policies needed to coordinate the global Internet's system of unique identifiers.

**RAA** The Registrar Accreditation Agreement is the contract between ICANN and its accredited registrars. It describes the obligations of both parties.

**RrSG** The Registrar Stakeholder Group represents domain name registrars. Registrars are organizations that verify availability and reserve domain names on behalf of a registrant.

**RSSAC** The Root Server System Advisory Committee represents organizations responsible for operating the world's 13 root name servers and others concerned with stable technical operation of the authoritative root server system.

**RySG** The Registries Stakeholder Group represents the interests of registries currently under contract with ICANN, in the Generic Names Supporting Organization. A registry is the authoritative, master database of all domain names registered in each top-level domain.

**SSAC** The Security and Stability Advisory Committee advises the ICANN community and Board on matters relating to the security and integrity of the Internet's naming and address allocation systems. Membership is by invitation only.

**UDRP** The Uniform Dispute Resolution Policy is a set of agreed-upon policies and procedures that define how to resolve domain name registration disputes, such as abusive registrations that harm existing brands or trademarks, with any ICANN-accredited registrars.

**WHOIS** (pronounced "who is"; not an acronym) An Internet Protocol that is used to query databases to obtain information about the registration of a domain name or IP address. ICANN's gTLD agreements require registries and registrars to offer an interactive web page and a port 43 WHOIS service providing free public access to data on registered names. Data includes the domain registration creation and expiration dates, name servers, and contact information for the registrant and designated administrative and technical contacts.

**For more definitions, go to [www.icann.org/en/about/learning/glossary](http://www.icann.org/en/about/learning/glossary)**

# ONE WORLD. ONE INTERNET.

## About ICANN

ICANN's mission is to ensure a stable and unified global Internet.

To reach another person on the Internet you have to type an address into your computer—a name or a number. That address has to be unique so computers know where to find each other. ICANN coordinates these unique identifiers across the world. Without that coordination we wouldn't have one global Internet.

ICANN was formed in 1998. It is a not-for-profit public-benefit corporation with participants from around the world dedicated to keeping the Internet secure, stable and interoperable. It promotes competition and develops policy on the Internet's unique identifiers.

ICANN doesn't control content on the Internet. It cannot stop spam and it doesn't deal with access to the Internet. But through its coordination role of the Internet's naming system, it does have an important impact on the expansion and evolution of the Internet. For more information please visit [www.icann.org](http://www.icann.org).

### Hub Offices

Istanbul	Regus Selenium Plaza, Hakki Yeten Cad. Selenium Plaza No:10/C K:5&6, 34349 Fulya Besiktas, Istanbul	Turkey	T +90 212 381 8727 F + 90 212 381 8731
Los Angeles	12025 Waterfront Drive Suite 300 Los Angeles, CA 90094	USA	T +1 310 301 5800 F+1 310 823 8649
Singapore	Ocean Financial Centre, 10 Collyer Quay, Level 37-06/10	049315	Singapore T +65 6808 6666

### Engagement Centers

Beijing	Email queries.beijingec@icann.org	China	T +86 10 6535 0376
Brussels	6 Rond Point Schuman, BT. 1, B-1040 Brussels	Belgium	T +32 2 234 7870 F +32 2 234 7848
Montevideo	La Casa de Internet de Latinoamérica y el Caribe, Rambla República de México 6125	Montevideo 11400	Uruguay T + 598 2604 2222 ext 5701 F + 598 2604 2222 ext 4112

