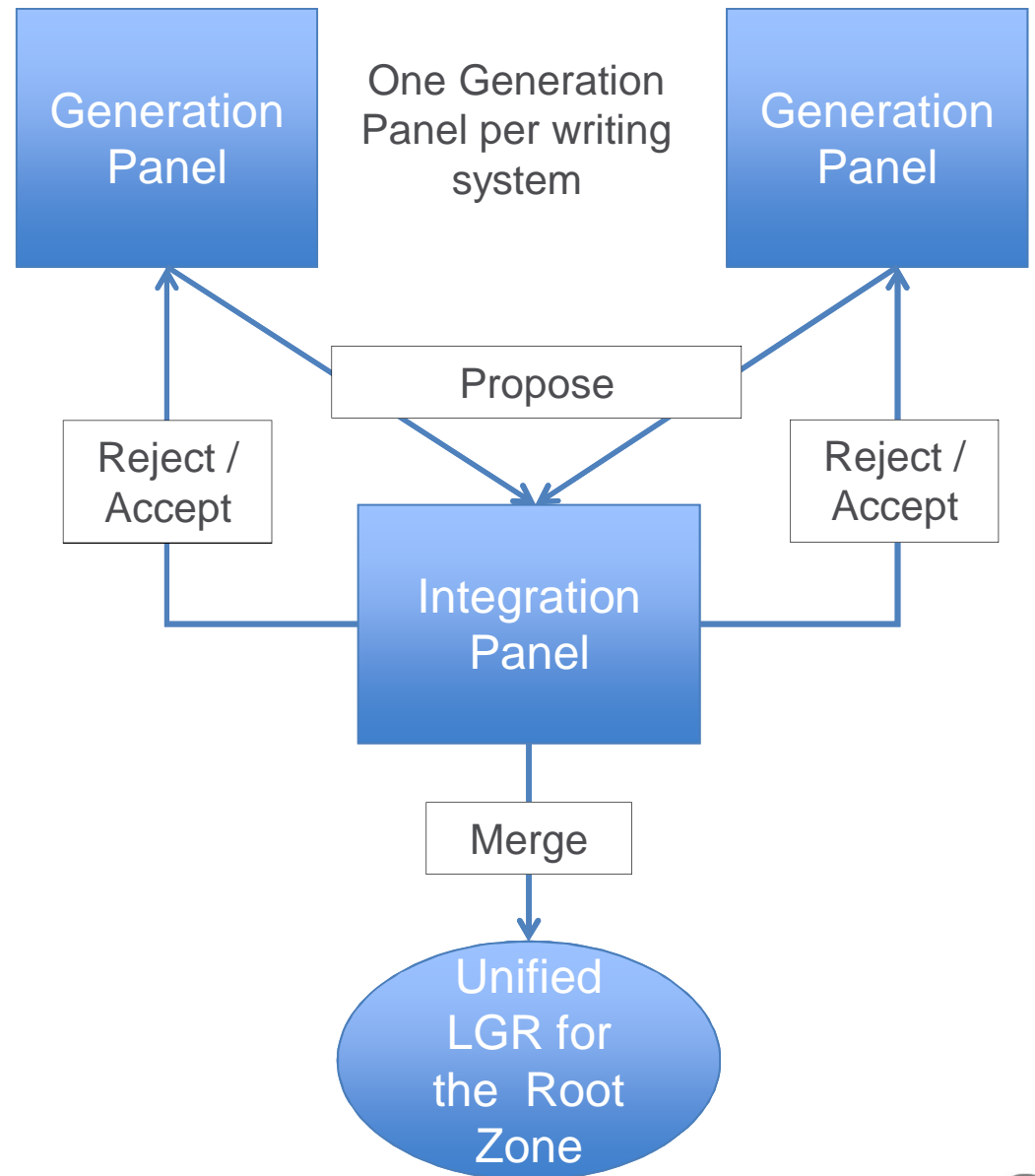


# How will the LGR Procedure work?

- + Generation Panels generate proposals for script specific LGRs, based on community expertise and requirements
- + Integration Panel reviews proposals and integrates them into common Root Zone LGR while minimizing the risk to root zone as shared resource
- + Label Generation Rules (LGR) define:
  - + which labels are permissible
  - + which variant labels exist
  - + which variant labels may be allocated



# Integration Panel launched

- + Integration Panel [selection](#) completed on 6 September 2013
- + Integration Panel met early October to launch work on startup tasks for the LGR procedure
- + The panel began work on:
  - + Maximal Starting Repertoire for the Root
  - + Default Whole Label Evaluation rules
  - + Define format for LGR submissions

# Focus next on Generation Panels

- + The process is driven by volunteer-based Generation Panels that will:
  - develop the set of rules for a particular writing system
  - create output representing the desired LGR elements for that environment
  - submit their proposals for the IDN Root LGR to the Integration Panel
  - consist of experts in a given writing system, plus additional ICANN-contracted experts if needed
  - combine technical and linguistic expertise with representation of the variety of users of domain names for a given scripts
- + Goal: **represent community interests *and* ensure particular writing system expertise**
- + Call for Generation Panels published on 11 July 2013, including guidance on composition, expertise, diversity, members responsibilities, etc. <http://www.icann.org/en/news/announcements/announcement-11jul13-en.htm>

# Forming Generation Panels

- + Where to start?
  - + Communities with existing working groups can respond to the "Call" by submitting an Sol for the working group as a whole, OR
  - + Work with community to form a prospective panel, AND
  - + Create a tentative work plan that includes
    - relevant writing systems covered by the script
    - user community representation on the prospective panel
    - a tentative schedule, including major milestones
    - issues of logistics and funding, including information on face-to-face meetings
    - all other relevant information: composition, members, information suitable for evaluating any conflicts of interest or diversity requirements, etc.
    - submit to ICANN for review in light of the criteria set forth in the Procedure

# Forming Generation Panels – Cont.

- + Once composition and work plan are reviewed by ICANN staff with advice from Integration Panel, the Generation Panel can start its work on the LGR
- + To support the Community in this effort, ICANN will shortly publish a Guidance document on 'How to setup and run a Generation Panel'
- + Visit LGR Procedure workspace available on ICANN Community wiki:  
<https://community.icann.org/display/croscomlgrprocedure/Root+Zone+LGR+Project>