

The At-Large Constituency in ICANN

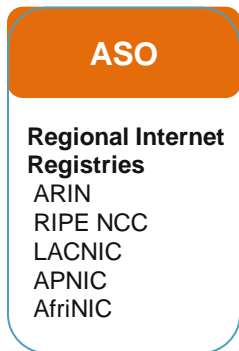
*An Introduction by
Carlton Samuels
ALAC Member 2009-2013*

ICANN Multi-Stakeholder Model

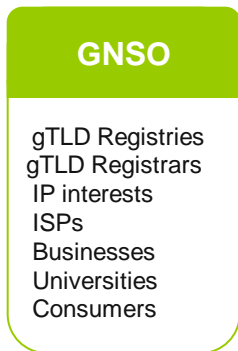
Staff



Multi-Stakeholder Model



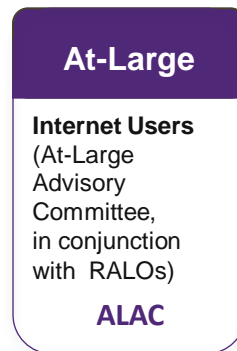
Another Multi-Stakeholder Model



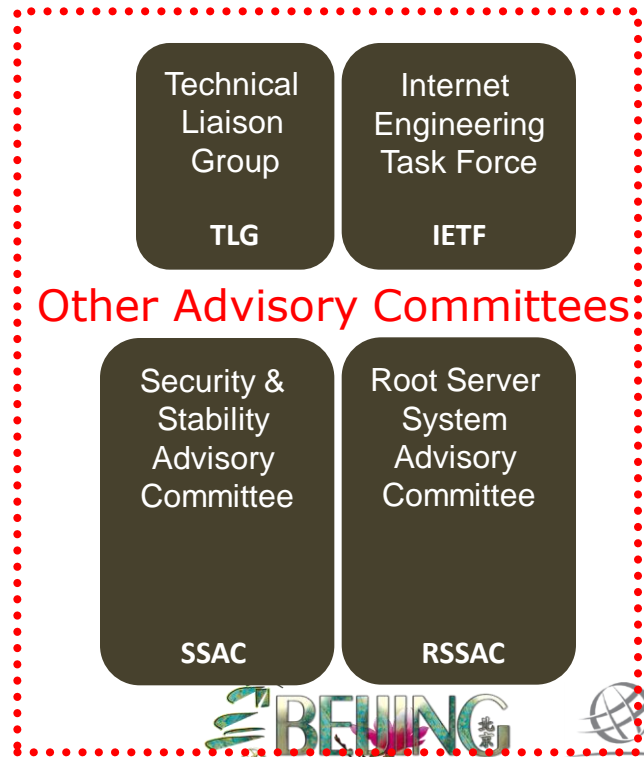
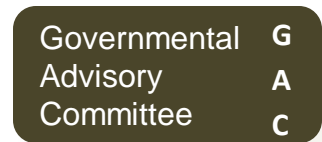
Country Code Operators



Internet Users



Governments



What is At-Large?

- Community of **Individual Internet Users** : 150+ At-Large Structures (ALS)
- An ALS is a group (computer clubs, associations, learning centers etc.) representing the views of individual Internet users
- They are active throughout the world
- What does the At-Large Advisory Committee (ALAC) do?
 - Issue comments in response to ICANN **public comment** requests.
 - Issue comments on **any subject**, process, structure, policy or topic which it deems important to comment on in ICANN.
 - Issue comments about **any external process** linked to ICANN in one way or other and which affects Internet users.
 - Takes part in **cross-community working groups** (CWGs) within ICANN.
 - Relays the ICANN **message** to Internet Users around the world
 - Coordinates the Filing of **new gTLD objections** from the community



ICANN

Map Sat Ter

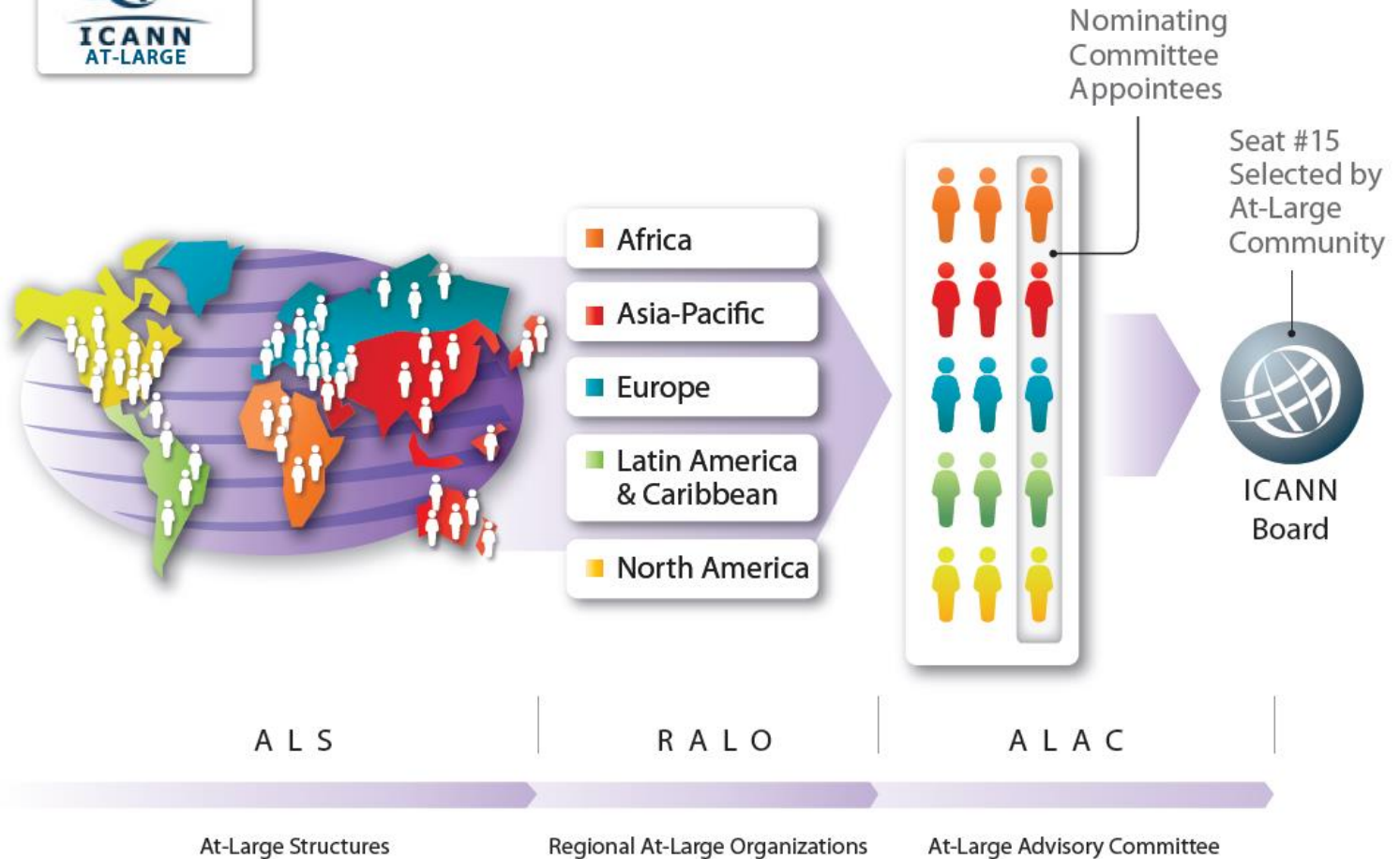


Regional At-Large Organizations

- European Regional At-Large Organization (**EURALO**)
- Latin American and Caribbean Islands Regional At-Large Organization (**LACRALO**)
- North-American Regional At-Large Organization (**NARALO**)
- Africa Regional At-Large Organisation (**AFRALO**)
- Asia-Pacific Regional At-Large Organisation (**APRALO**)



At-Large Organizational Diagram



Map is for representational purposes only.
 For more detailed information see the Google Map of the RALOs and ALSes at: <http://www.atlarge.icann.org/maps/>
 Full country to region list: <http://www.icann.org/en/meetings/montreal/geo-regions-topic.htm>

Source: <http://www.atlarge.icann.org/orgchart>

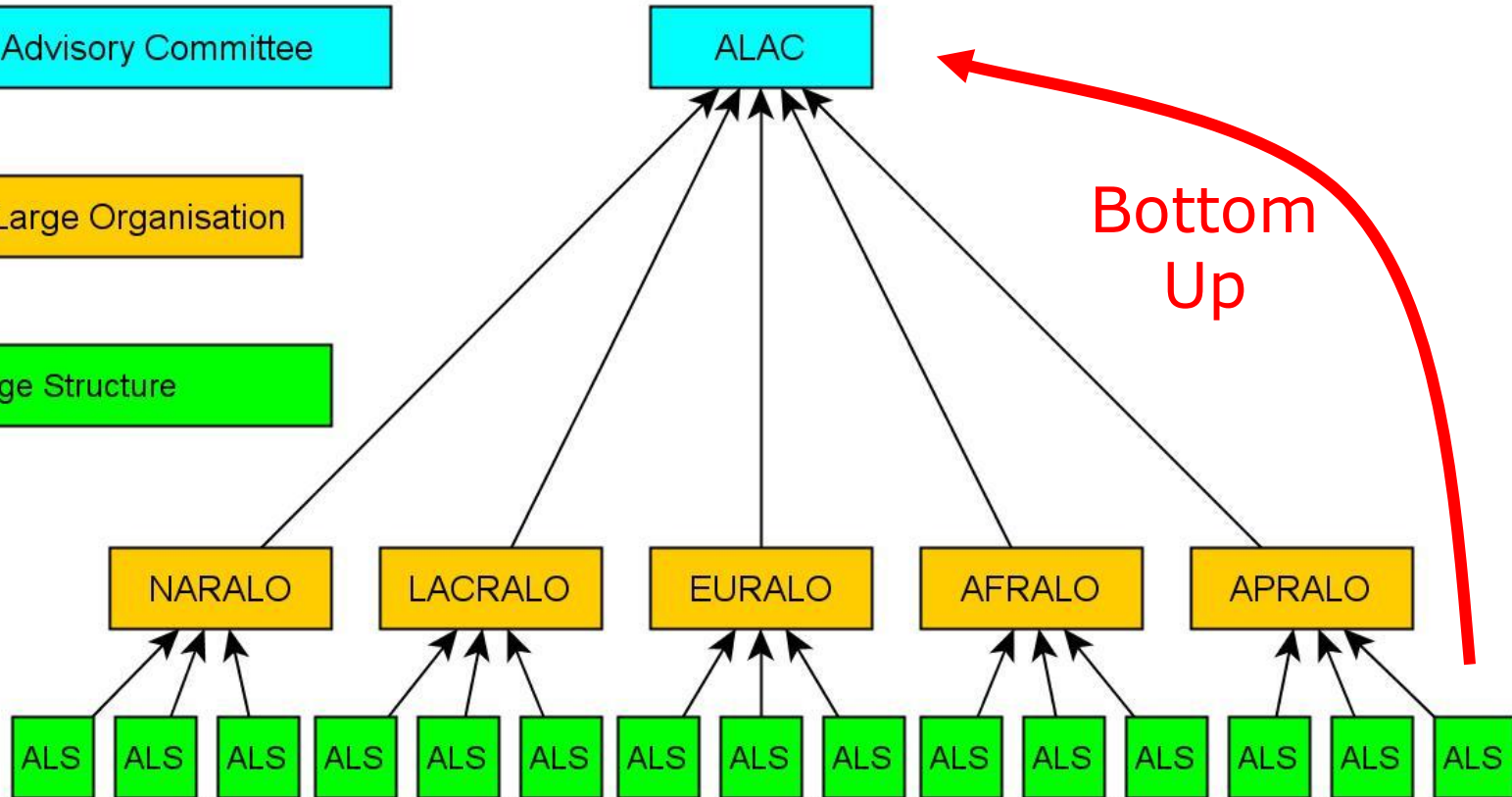


At-Large Bottom-up to the ALAC

ALAC: At-Large Advisory Committee

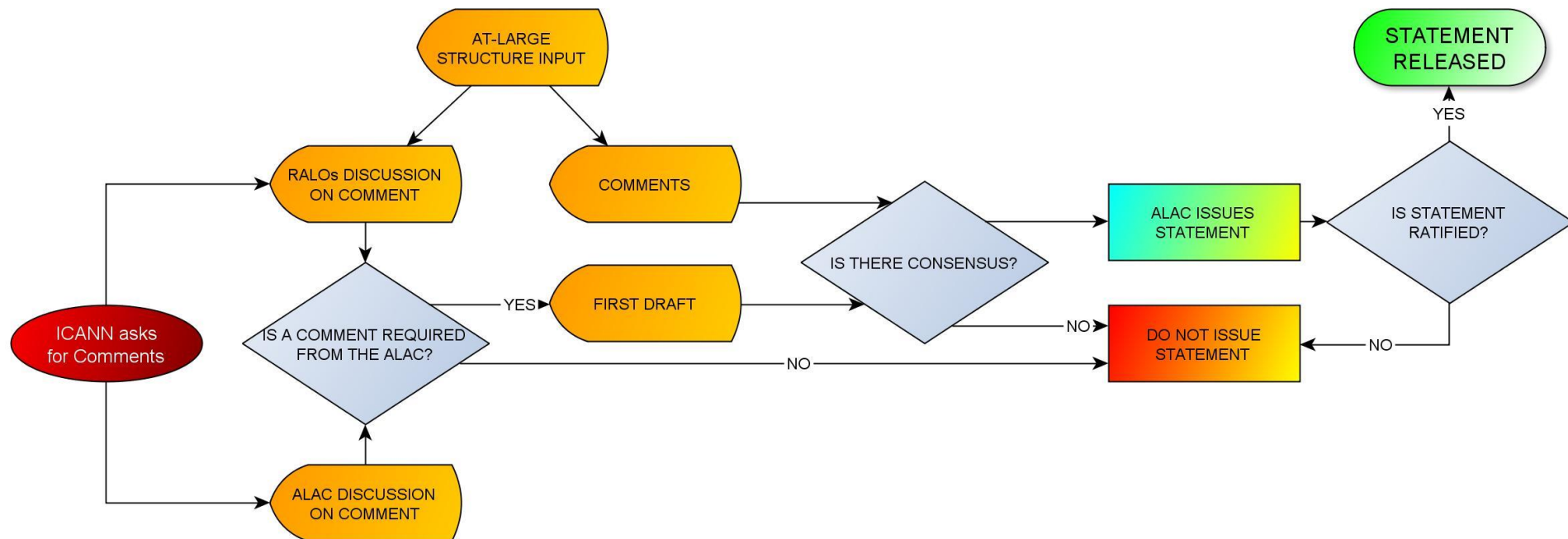
RALO: Regional At-Large Organisation

ALS: At-Large Structure



Example of At-Large Structure Input

Response to Public Comment Request

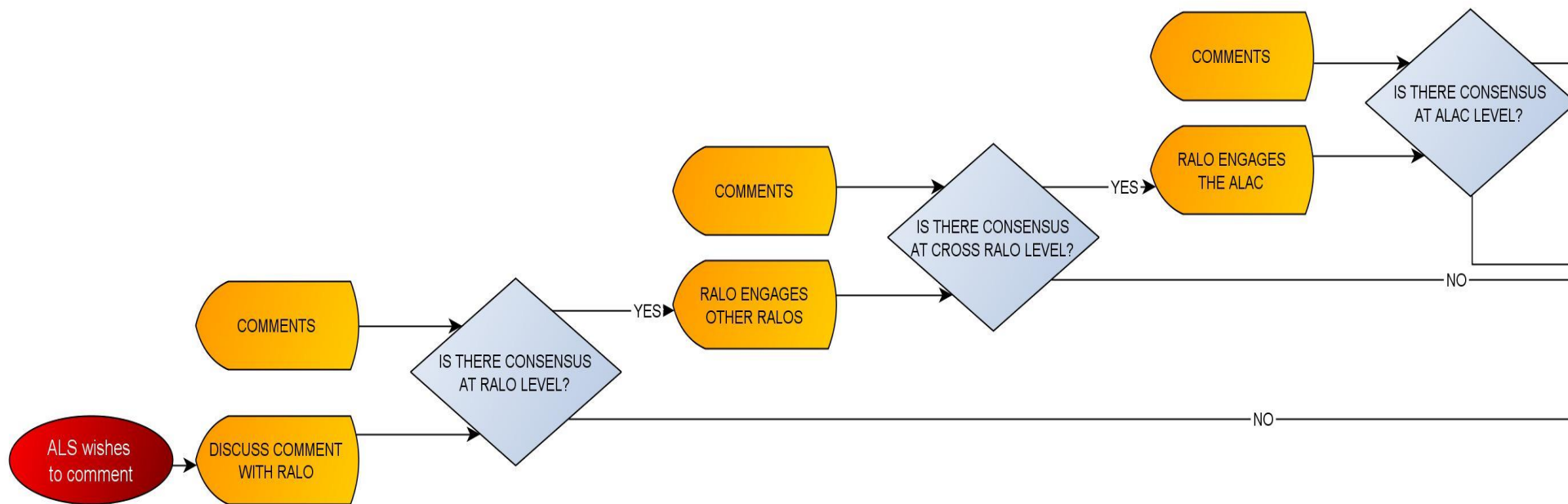


Bottom-up process



Example of At-Large Structure Input

Bottom-up process



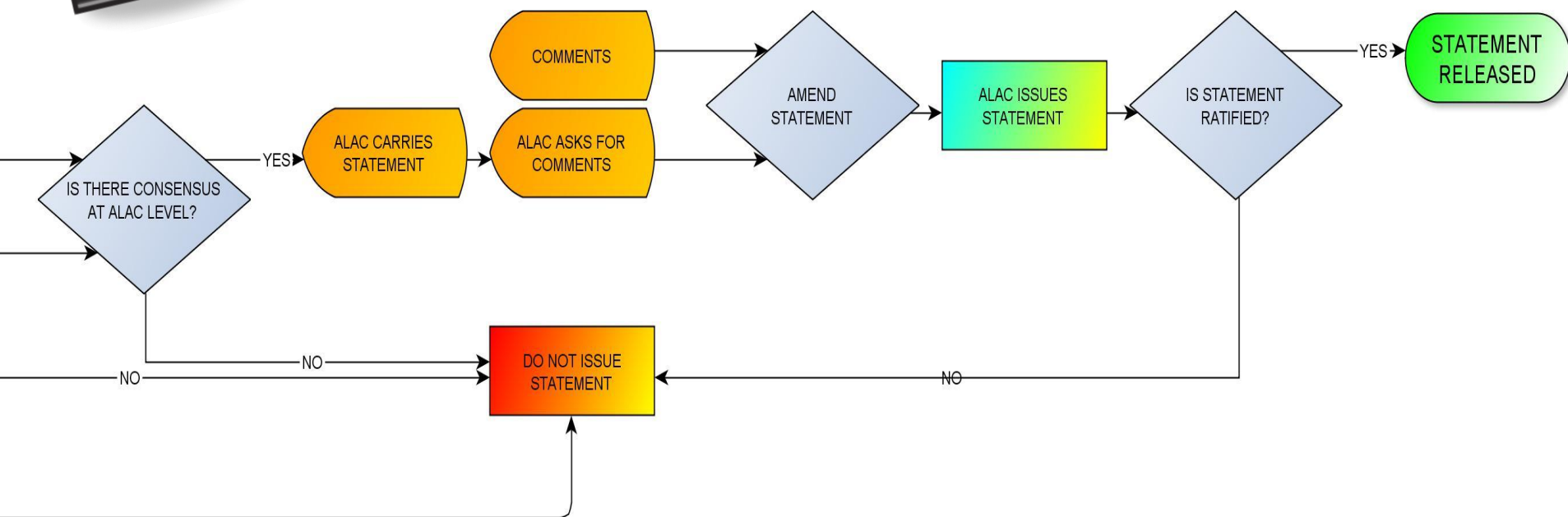
**RALO
DISCUSSION**

**CROSS-RALO
DISCUSSION**

**SEND TO
ALAC**



Bottom-up process



ALAC DISCUSSION

ALAC VOTE

STATEMENT RELEASED

Some important links:

At-Large Correspondence:

<http://www.atlarge.icann.org/correspondence>

At-Large Policy Development

<https://community.icann.org/x/bwFO>

At-Large Working Groups

<https://community.icann.org/x/loli>



Thank You & Questions?



ICANN
AT-LARGE

Contact: staff@atlarge.icann.org

#ICANN49



Thank You & Questions?



carlton.samuels@gmail.com

