

I C A N N 4 7

A Next Generation Registration Directory Service (RDS)

15 July 2013



NO.47 - 14-18 JULY 2013



Next Generation Registration Directory Service Session Agenda

- + Introduction
- + Discussion Questions
and Community Input
- + Questions about Initial Report
- + Next Steps



Introduction

- + ICANN Board directives
 - + Implement the WHOIS Review Team recommendations
 - + Redefine the purpose and provision of gTLD registration data
- + Expert Working Group (EWG) on gTLD Directory Services was formed to
 - + Assess needs for registration data
 - + Recommend a revolutionary approach



EWG Members



Jean-Francois Baril (Lead Facilitator)

Pekka Ala-Pietilä

Michele Neylon

Lanre Ajayi

Michael Niebel

Steve Crocker

Stephanie Perrin

Chris Disspain

Rod Rasmussen

Scott Hollenbeck

Carlton Samuels

Jin Jian

Faisal Shah

Susan Kawaguchi

Fabricio Vayra

Nora Nanayakkara

Key Findings

- + Initial Report published on 24 June

<https://www.icann.org/en/groups/other/gtld-directory-services/initial-report-24jun13-en.pdf>

- + Based on rigorous analysis of users and purposes
- + Recommends paradigm shift
 - + Abandon one-size-fits-all WHOIS system
 - + Replace by purpose-driven system to improve privacy, accuracy & accountability



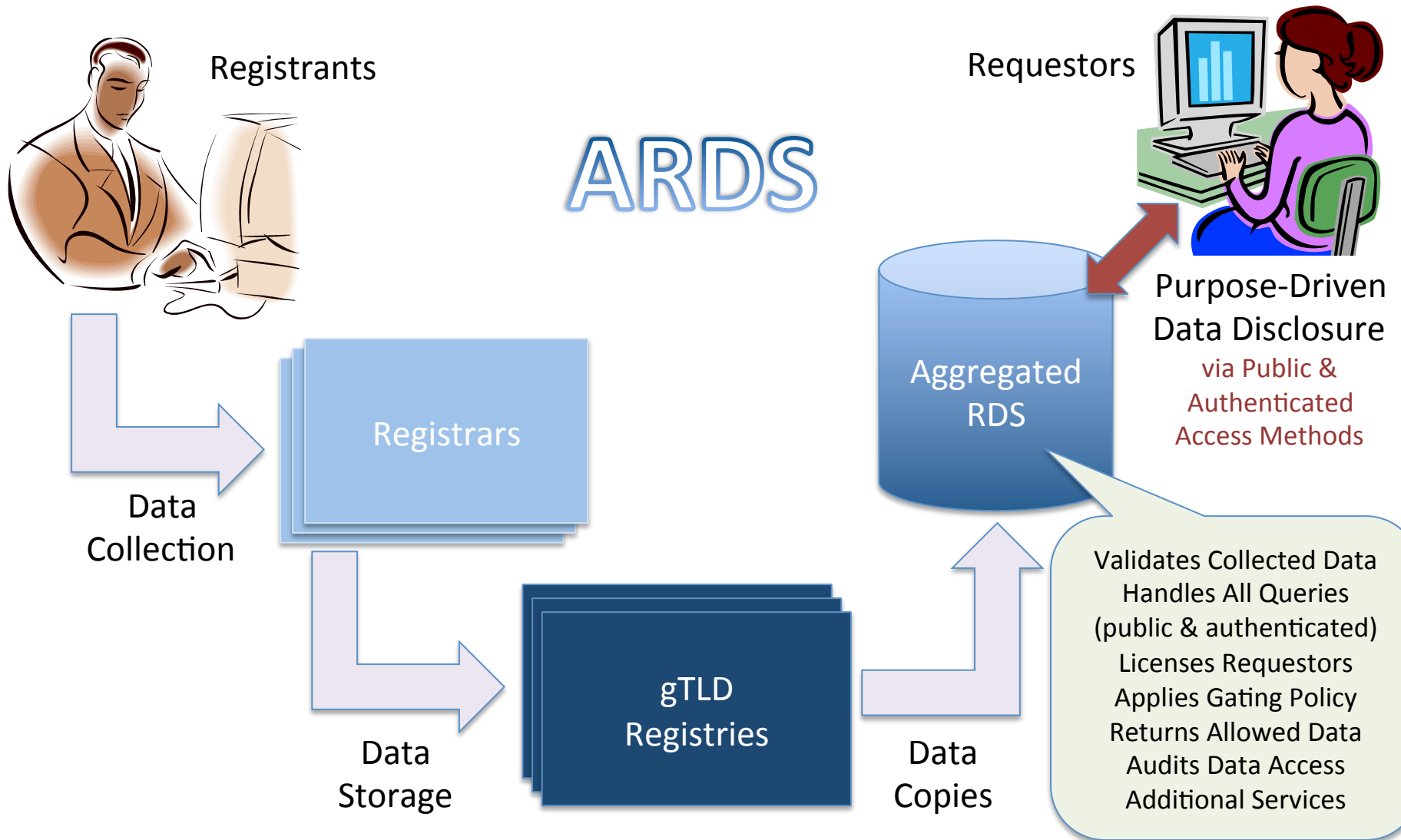
Desired Features and Design Principles

+ Based on use cases, the EWG formed consensus on principles



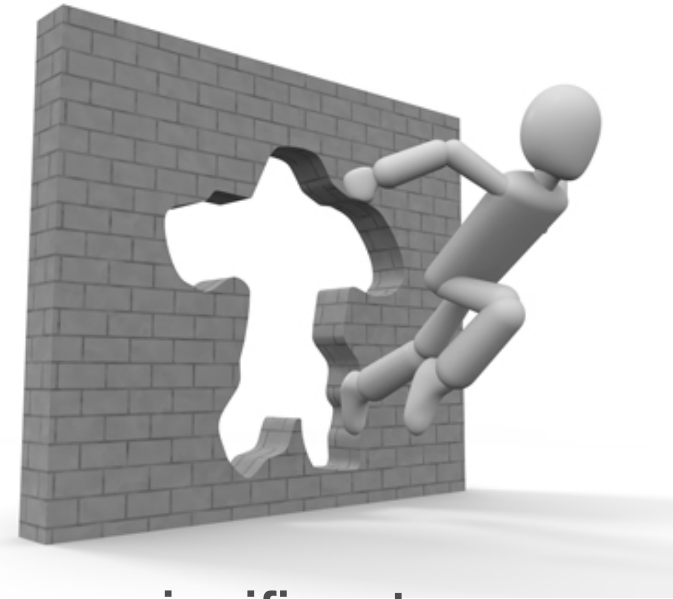
Applicability	Data Elements
International Considerations	Access Methods
Accountability	Validation and Accuracy
Privacy Considerations	Standard Validation Service
Permissible Purposes	Contractual Relationships
Data Disclosure	Storage and Escrow

Suggested Next-Generation Model



Consensus View

- + Our initial report represents our consensus view on recommended principles and features
- + Also reflects compromises and thus will not fully satisfy all stakeholders
- + While not perfect, we believe it describes a significant improvement over today's WHOIS for everyone
- + We invite your constructive feedback
 - + Is there a better solution?
 - + If not, how can this suggested solution be improved?



We Need Your Help!

- + Comment invited on all aspects of our report, including these discussion questions...



<http://www.icann.org/en/groups/other/gtld-directory-services/share-24jun13-en.htm>

Have we identified important model advantages and disadvantages?



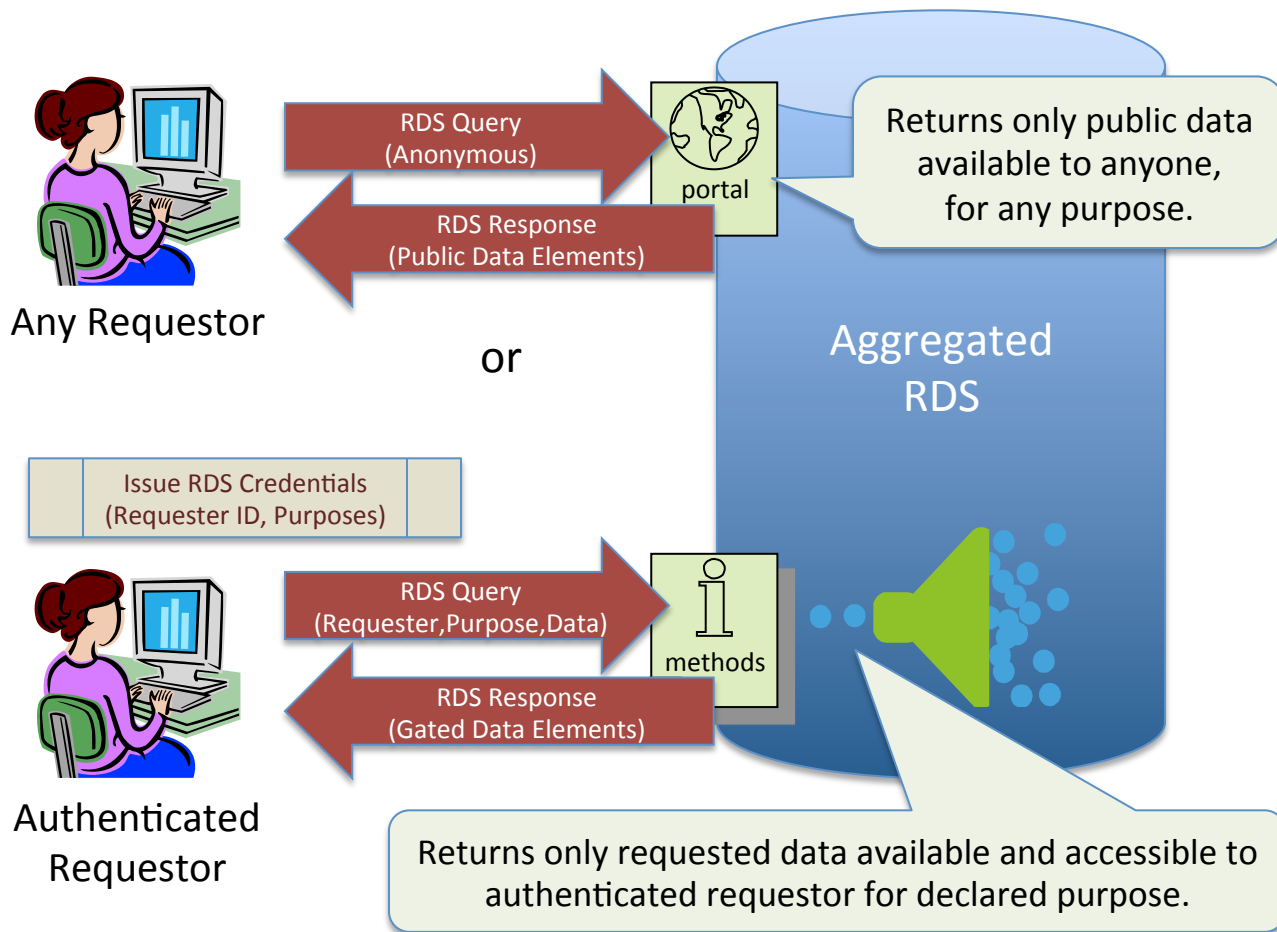
+ Potential advantages and disadvantages include

- ✓ “One stop shopping” for requestors
- ✓ Greater accountability
- ✓ Ability to track/audit across TLDs
- ✓ Enhanced search capability
- ✓ Minimizes some costs
- ✓ Requestor validation/accreditation
- ✓ More efficient accuracy management
- ✓ Internationalized portal...
- Data latency
- Valuable “Big Data” source
- Risk of insider abuse and attack
- Control concerns
- OTHERS?

+ Additional advantages and disadvantages?

+ Which data repository should be authoritative?

Could purpose-driven access to validated registration data satisfy users and needs?



In the case of gated access...

- + How would requestors be identified, authorized and issued access credentials?
- + Who would accredit law enforcement agents (LEA), based on what criteria?
- + How should public vs. gated elements be classified?
What criteria should we use to make recommendations?



Satisfying at-risk registrant's needs

- + Could maximum protected registration satisfy both accountability and privacy needs of at-risk individuals?
- + How might a suitable solution be identified and funded?



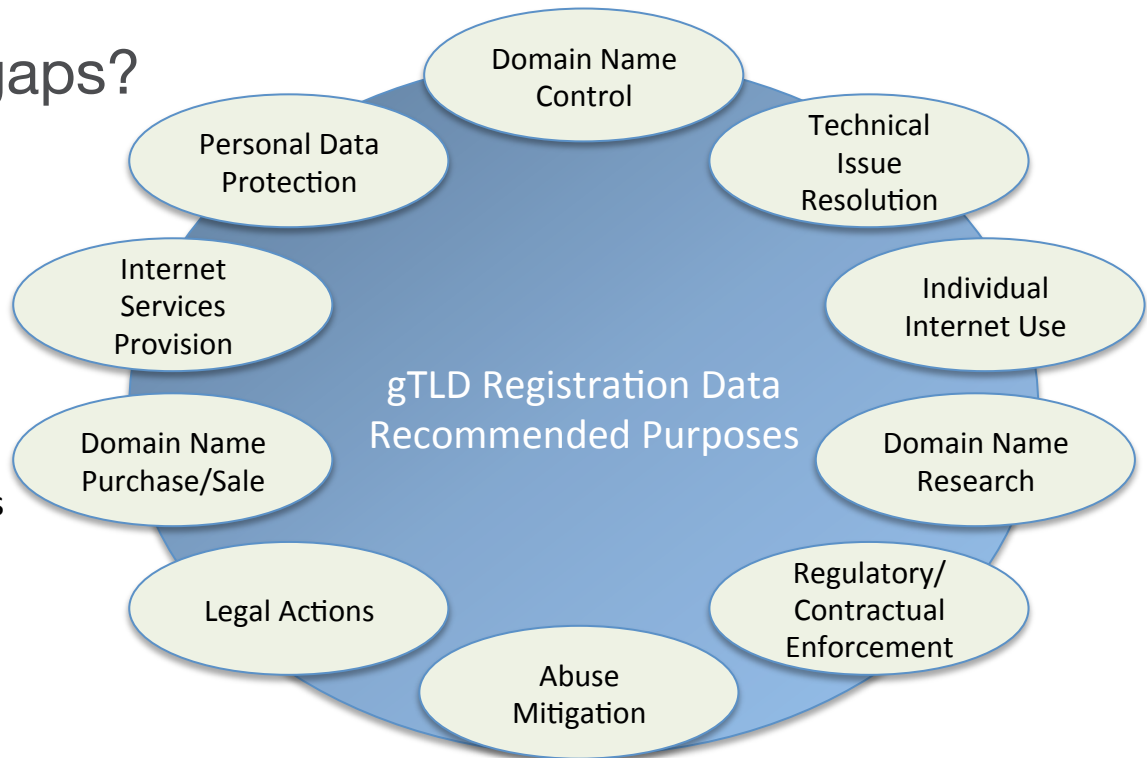
Have we identified users and purposes?

+ Are users and purposes sufficiently representative?

+ Any significant gaps?

REGISTRATION DATA USERS

- ✓ All Registrants
- ✓ Protected Registrants
- ✓ Internet Tech Staff
- ✓ On-Line Service Providers
- ✓ Individual Internet Users
- ✓ Business Internet Users
- ✓ Intellectual Property Owners
- ✓ Internet Researchers
- ✓ LEA/OpSec Investigators
- ✓ Non-LEA Investigators
- ☒ Bad Actors



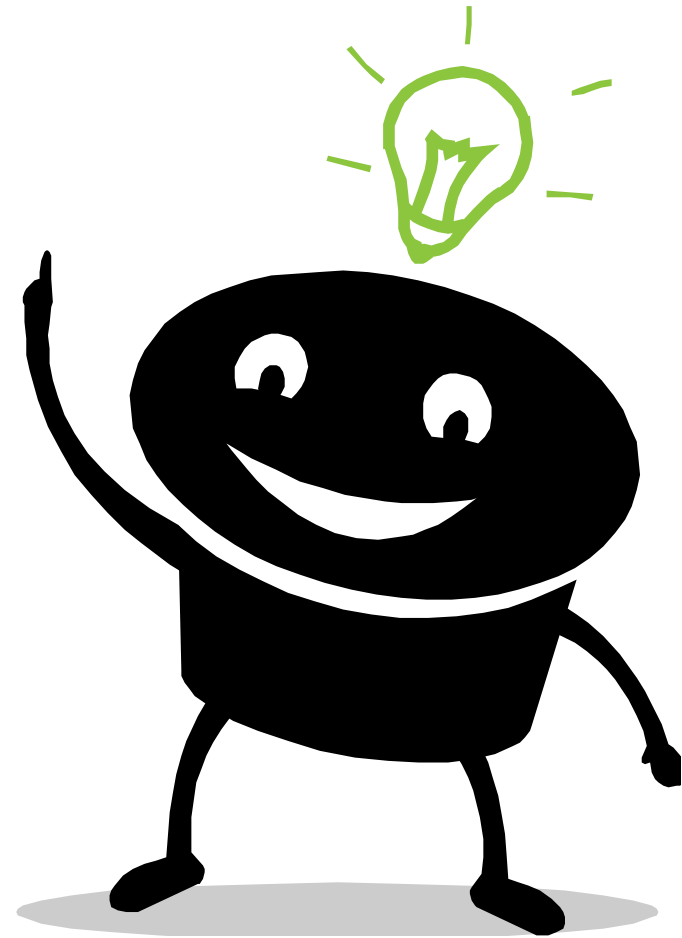
+ How could new users/ purposes be accommodated?
Who would decide, using what criteria?

Input needed to inform EWG work on open areas

- + Are data elements identified thus far sufficiently representative of those required for each purpose?
- + Storage and escrow duration, log retention
- + Cost impacts and how those costs could be borne



Questions about Initial Report?



Continuing This Dialog



EWG briefings being given this week
Additional calls & briefings upon request

Online Questionnaire:

[https://www.icann.org/en/groups/other/
gtld-directory-services/share-24jun13-en.htm](https://www.icann.org/en/groups/other/gtld-directory-services/share-24jun13-en.htm)

Comment via Email:

<mailto:input-to-ewg@icann.org>

EWG Next Steps



- + Community input on draft and discussion questions by 12 August
- + EWG work will continue on open areas
- + Final report before Buenos Aires
- + Deliver to CEO and Board
- + Input to GNSO PDP



I C A N N 4 7



Thank you

