

## WHAT IS EURALO?

Go beyond simply using the Internet. If you are a **European end user organization** concerned with Internet-related issues, you can help influence its operation, growth and development.

EURALO unites European voices of ICANN's At-Large community, including Internet-related civil society and consumer interests, to ensure their views are included in the bottom-up, consensus-based, multistakeholder ICANN policy development process.

Our current membership includes approximately 35 organizations working on Internet-focused issues, including individual At-Large Structures formed by Internet Society chapters and consumer groups across Europe.

EURALO is governed by our own organizing documents, including a memorandum of understanding with ICANN. Playing a key role in ICANN's regional strategies, EURALO partners with ICANN's Global Stakeholder Engagement team to raise awareness of the critical infrastructure for the Domain Name System.



Members of the At-Large community at the Second At-Large Summit held in London in June 2014.

## ENGAGE WITH ICANN AT-LARGE

-  @icannatlarge
-  facebook.com/icannatlarge
-  facebook.com/euralo
-  youtube.com/icannatlarge
-  slideshare.net/  
icannpresentations
-  flickr.com/photos/icannatlarge
-  atlarge.icann.org

## SCAN CODE FOR MORE INFO



## LOCAL CONTACT INFO



## THE INTERNET IS YOURS

Visit our website for more information  
about joining At-Large:  
[atlarge.icann.org](http://atlarge.icann.org)

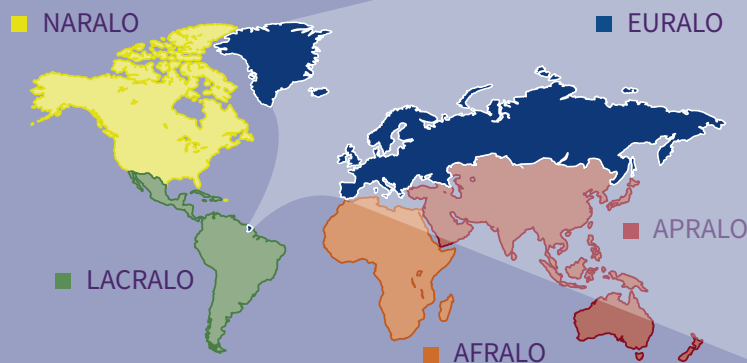
Contact At-Large via email:  
[staff@atlarge.icann.org](mailto:staff@atlarge.icann.org)

Join our mailing list:  
[atlarge-lists.icann.org/mailman/  
listinfo/euro-discuss](http://atlarge-lists.icann.org/mailman/listinfo/euro-discuss)

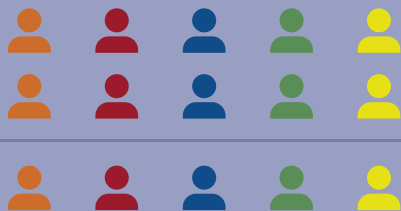
# THE AT-LARGE ORGANIZATIONAL STRUCTURE

## 5 REGIONAL AT-LARGE ORGANIZATIONS (RALOs) — OVER 200 AT-LARGE STRUCTURES (ALSes)

The At-Large Structures form the basis of the At-Large community, representing the interests of individual Internet users worldwide. The five RALOs unite our ALSes based on their geographic regions, namely: Africa (AFRALO), Asia, Australasian and Pacific Islands (APRALO), Europe (EURALO), Latin American and the Caribbean Islands (LACRALO) and North America (NARALO).



## AT-LARGE ADVISORY COMMITTEE (ALAC) — 15 MEMBERS



10 selected by RALOs to serve on the ALAC (2 from each RALO)

5 selected by NomCom to serve on the ALAC (1 from each region)

SEAT #15 ON THE ICANN BOARD IS SELECTED BY THE ALAC AND THE AT-LARGE COMMUNITY

## WHAT IS ICANN?

ICANN's mission is to help ensure a stable, secure and unified global Internet. To reach another person on the Internet, you have to type an address into your computer or other device – a name or a number. That address has to be unique so computers know where to find each other. ICANN helps coordinate and support these unique identifiers across the world. ICANN was formed in 1998 as a not-for-profit public-benefit corporation and a community with participants from all over the world. For more information please visit: [icann.org](http://icann.org).

## WHAT IS THE AT-LARGE COMMUNITY?

We are a growing global community of over 200 At-Large Structures and independent members. Our membership is diverse, ranging from Internet-related consumer rights groups, academic organizations, computer clubs and technical communities, to civil society and capacity-building organizations. We share a passion for serving end users – by furthering the development of information and communications technologies and contributing to policies related to the technical coordination of the Domain Name System. We unite associations that represent the interests of end users.

## THE EUROPEAN REGIONAL AT-LARGE ORGANIZATION



Our region represents a large number of the world's Internet users. EURALO has a significant voice in influencing ICANN's multistakeholder policy development. Why don't you consider joining as an individual or with your organization? The Internet is yours.

## WHAT DO WE DO AT EURALO?

Our community offers many opportunities for individuals and organizations interested in engaging with ICANN. Want to learn about ICANN issues concerning end users? Join the monthly RALO and ALAC teleconferences or get involved in our capacity-building webinars. Want to influence Internet policies such as Directory Services (WHOIS) and new generic top-level domains (gTLDs)? Learn, discuss and debate with members in our working groups, and help draft policy advice on behalf of the ALAC and the At-Large community. Interested in areas besides Internet policy? Contribute to advancing accessibility and inclusion at ICANN, testing communication and collaboration tools, and designing project proposals. By gaining experience, you will also have the opportunity to assume positions in the RALOs, the ALAC, and other important decision-making bodies in ICANN.

Want to join us? Email: [staff@atlarge.icann.org](mailto:staff@atlarge.icann.org).