



CELEBRATING DIVERSITY

Onboarding New APRALO Members

An Introduction to the At-Large Community, APRALO and the ALAC

September 2024, v2.1

Agenda

- **ICANN & its mission**
- **At-Large Community**
 - **APRALO** - The Asian, Australasian & Pacific Islands Regional At-Large Organization
 - **ALAC** – At-Large Advisory Committee
- **What We Do, Why and How**
- **When and How to Participate**
- **Available Resources**



ICANN - Internet Corporation for Assigned Names and Numbers



One World, One Internet

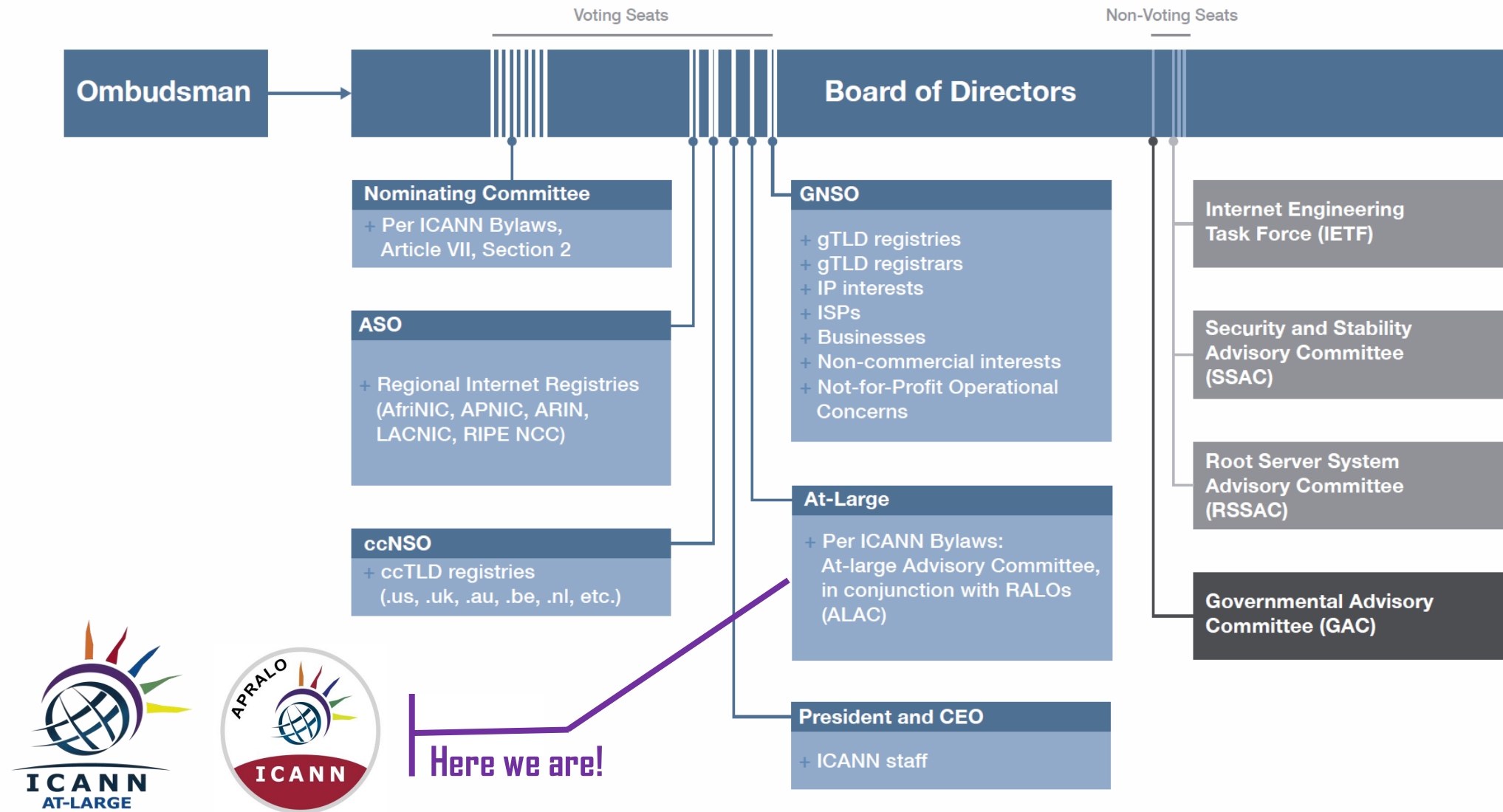
To reach another person on the Internet you have to type an address into your computer – a **name** or a **number**. That address must be unique so computers know where to find each other.

ICANN **coordinates these unique identifiers** across the world; its mission is to **help ensure a stable, secure, and unified global Internet**.

Without that coordination, won't have **one globally interoperable Internet**.

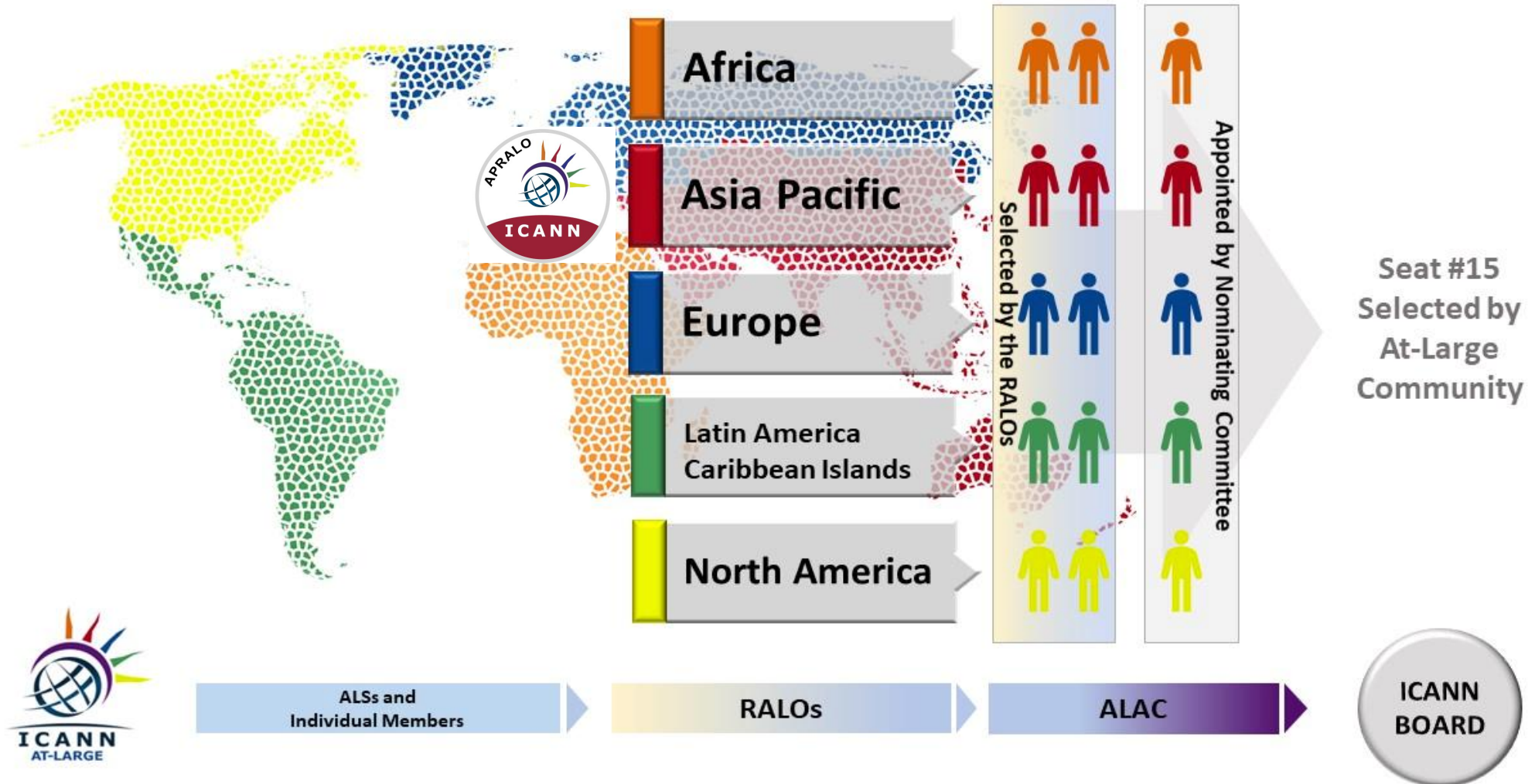
Formed in 1998 as a nonprofit public benefit corporation with a community of participants from all over the world.

The At-Large is Part of the ICANN Community



The At-Large Community, APRALO and ALAC

The At-Large Community



APRALO - The Asian, Australasian & Pacific Islands Regional At-Large Organization



**A community comprising At-Large Structures (ALSes) and Individual Members (IMs)
as well as non-member participants**

The ALAC – At-Large Advisory Committee



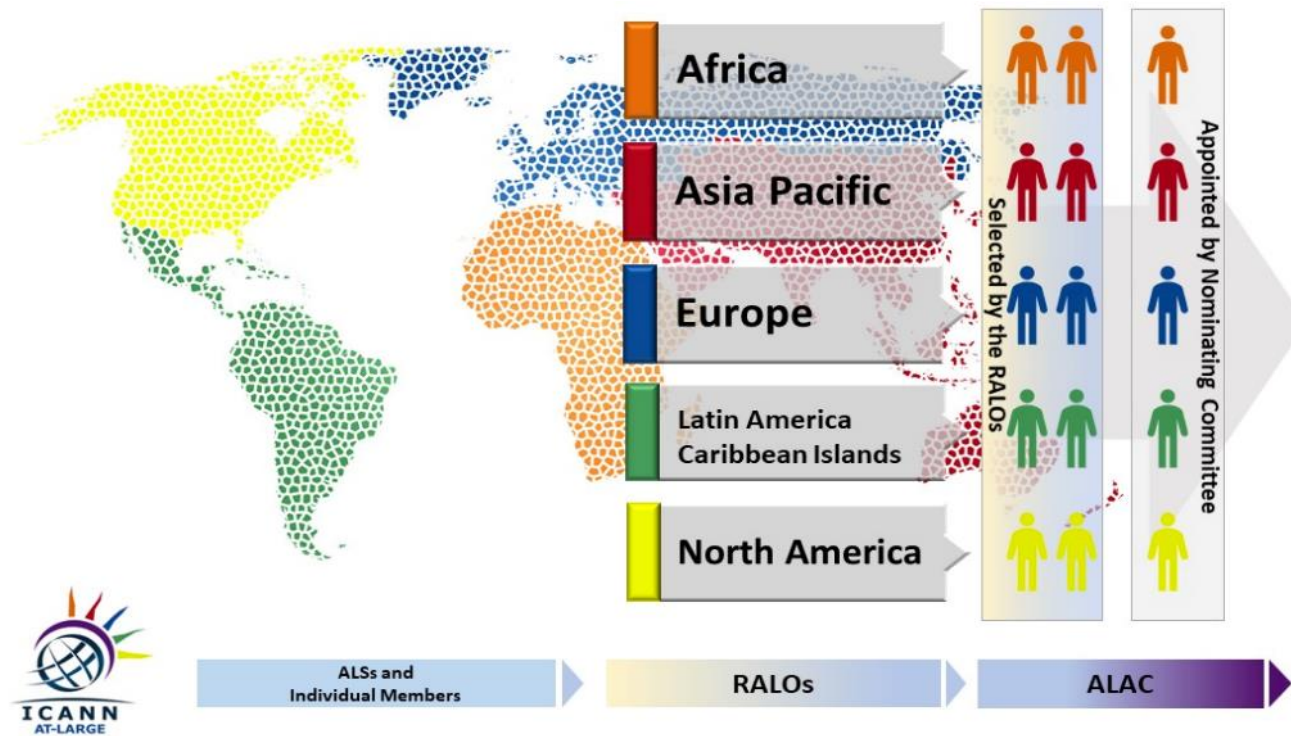
The ALAC for the 2023-2024 Term

15-person Advisory Committee

- Advocates for end-user interests
- Manages At-Large Community organization building
- Advises on ICANN activities - Internet policies developed by ICANN's Supporting Organizations
- Helps safeguard ICANN's accountability mechanisms
- Selects one ICANN director

ALAC Mandate per the ICANN Bylaws

In accordance with ICANN's Bylaw, the **ALAC** has the duty to understand, represent, and advocate for the best interest of Internet end users worldwide.



But, remember ... the ALAC is only 15 persons.

Hence, reliance on a **bottom-up, organization-building approach** comprising members (ALSes and IMs) organised by Regions (RALOs)

Internet individual end user interests

Q. Who is the Internet individual end user?

A. You, me and anyone who uses the Internet.

Q. What's the distinction?

A. The individual end user uses the Internet for personal activities – email, browsing, streaming, shopping, banking, elearning etc. etc. etc.

Q. What about domain name registrants?

A. Only where their interests do not diverge significantly.



Key At-Large Activities through ALAC



Provide Advice to
ICANN Board



Participate in Policy
Development
Processes



Conduct Capacity
Building and Outreach
Initiatives

Key At-Large Working Groups

Many At-Large working groups are dedicated to ICANN policy discussions and advice development activities.

Many others tackle various aspects of organization building, such as advancing accessibility and inclusion at ICANN, testing communication and collaboration tools, planning outreach and engagement projects, developing capacity building programs for newcomers, and fulfilling operational needs of the Community.

Almost all of our working groups, committees, small teams are open to everyone regardless of membership status in At-Large.

**At-Large
Consolidated Policy
Working Group
(CPWG)**

**At-Large
Operations, Finance
& Budget Working
Group (OFB-WG)**

**At-Large
Internationalized
Domain Name
Policy Working
Group**

**ALAC Community
Engagement Sub-
Committee
(ACES)**

Join the APRALO Community

Provide a **forum for promoting Asia Pacific Internet users' participation and involvement** in ICANN in an open, accountable and transparent manner

Promote, **understand & advocate for individual Internet users** and to provide a forum for **outreach, co-ordination and exchange of information** and knowledge

Act as an **interface** between individual Internet users and ICANN

Promote skills development and information exchange related to the Internet amongst Members

Bridge the digital divide and encourage users in developing countries to participate in APRALO

Select two individuals as APRALO Members' representatives to ALAC



APRALO Policy Forum



APRALO Monthly Calls



Outreach & Engagement



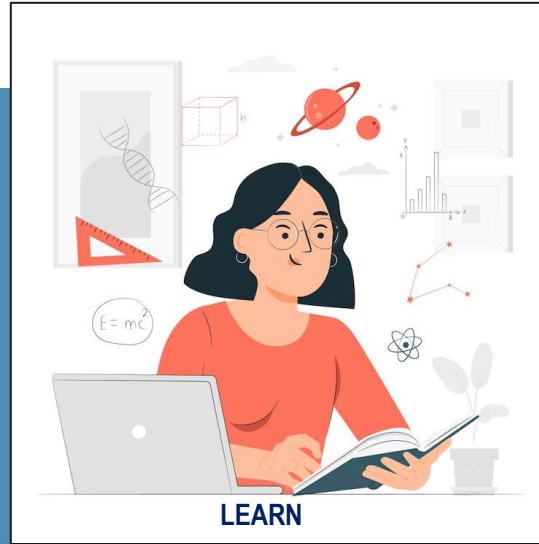
APRALO Newsletter



Continuous Improvement

Benefits of APRALO Membership/Participation

Designed by Freepik



Immerse in Policies being discussed @ICANN

Understand Issues of Importance

Offer Perspectives of different Stakeholders

Gain/offer Best Practices & Expertise

Acquire new skills

Engage in other Internet Governance and multistakeholder Communities



When and How to Participate



It's entirely up to you.

Are you ready to:

- See what you can offer
- Participate in APRALO initiatives
- Contribute to the work that we do
- Contribute to ICANN Policy Development
- Promote ICANN and APRALO's mandate
- Conduct Outreach & Engagement
- Share information with your community
- Relay input from your community

Support is Available

- Advice, assistance, guidance
- Discussion on issues, policy-making
- Planning outreach & engagement initiatives
- Speaker support
- Campaign formulation & support
- Mentorship



alamy

Image ID: 636099
www.alamy.com

Image credit: Alamy

APRALO Leadership Team (LT)



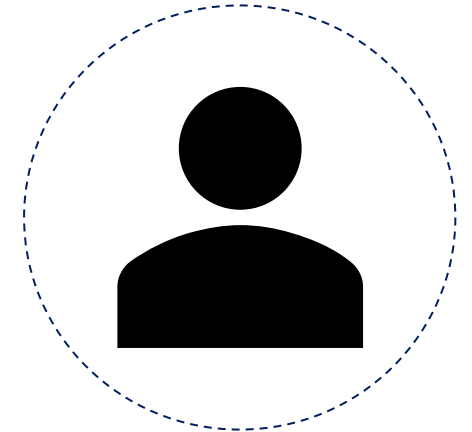
Amrita Choudhury
Chair [\[SOI\]](#)



Ali Al-Meshal
Vice-Chair [\[SOI\]](#)



Aris Ignacio
Vice-Chair [\[SOI\]](#)



To be selected
Indi. Members' Rep.



Satish Babu
ALAC Member [\[SOI\]](#)



Shah Rahman
ALAC Member [\[SOI\]](#)



Justine Chew
ALAC Member [\[SOI\]](#)

APRALO Community Mentors/Members supporting the LT



Cheryl Langdon-Orr
Former ALAC Chair &
ALAC Representative
[\[SOI\]](#)



Charles Mok
Former APRALO Chair,
Incoming Nominating
Committee Delegate
for APRALO



Maureen Hilyard
Former ALAC Chair
& ALAC Member,
Outgoing Nominating
Committee Delegate
for APRALO [\[SOI\]](#)

At-Large Support Staff



Heidi Ulrich

VP, Policy Development and
At-Large Relations



Silvia Vivanco

Policy Development Support Senior
Manager (At Large Regional Affairs)



Gisella Gruber

Manager, Policy Development &
Operations Support (At-Large)



Andrew Chen

Policy Development
Support Sr. Specialist



Yeşim Sağlam

Policy Operations
Specialist



Michelle DeSmyter

Policy Operations
Coordinator



Brenda Brewer

Policy Operations
Coordinator

ICANN Global Stakeholder Engagement Team Leads



Asia: [Samiran Gupta](#)



Eastern Europe & Central Asia: [Mikhail Anisimov](#)



Middle East: [Baher Esmat](#)



Oceania: [Save Vocea](#)



Links to Key APRALO Resources

Operations & Governance

[APRALO Page](#)

[APRALO Rules of Procedure \(RoP\) 2024](#)

[At-Large Structures \(ALSes\)](#)
- ALS Wiki

[Individual Members \(IMs\)](#)

[How to Join](#)

[APRALO Monthly Calls](#)

[APRALO Newsletter Archive](#)

[APRALO Continuous Improvement](#)
– [Cycle 1 Plan presentation](#)

Outreach & Engagement

[FY25 O&E Plan](#)

[APRALO Register of Skills & Interests \(RoSI\)](#)
- [Pilot Cycle 1](#) (19 Jul -13 Sep 2024)

APAC-Discuss Mailing List:
apac-discuss@icann.org

[Join APRALO Community WhatsApp Group](#)

Policy

[APRALO Policy Forum \(APF\)](#)

[APF 2024 Activities](#)

[APF 2024 Planning Calendar](#)

[APF Members List](#)

APF Mailing List – contact staff@atlarge.icann.org to join

At-Large Structure (ALS) Wiki

- Every ALS has a wiki space at the ICANN At-Large website
- Keep your ALS wiki, and primary & secondary contacts up-to-date
- Please contact staff@atlarge.icann.org for assistance to update wiki



The screenshot shows a web browser window with the URL <https://atlarge.icann.org/alses/apralo>. The page features a navigation bar with tabs for AFRALO, APRALO (selected), EURALO, LACRALO, and NARALO. Below the navigation bar, a text block states: "The [Asian, Australasian and Pacific Islands region](#) has 69 ALSes located in 34 countries and territories". A search bar is present with the text "Search: Keywords" and a search icon. Below the search bar, a list of ALSes is displayed, each with a logo, name, location, and links to "WIKI" and "Web".

| Logo | Name | Location | WIKI | Web |
|---|---|-------------------|----------------------|---------------------|
|  | Armenian Association for the Disabled | Yerevan, Armenia | WIKI | Web |
|  | Armenian Internet Traffic Exchange Foundation "ARMIX" | Yerevan, Armenia | WIKI | Web |
|  | At-Large@China | Beijing, China | WIKI | Web |
|  | Australian Communications Consumer Action Network | Sydney, Australia | WIKI | Web |

Links to Key At-Large Resources

Operations & Governance

[At Large Page](#)

[ALAC Page](#)

[ALAC Rules of Procedure](#)

[ALAC Monthly Calls](#)

[At-Large Operational, Finance & Budget Working Group \(OFB-WG\) Page](#)

[At-Large Continuous Improvement](#)

Outreach & Engagement

[ALAC Community Engagement Sub-Committee \(ACES\)](#)

[At-Large Social Media Working Group](#)

[At-Large Technology Task Force \(TTF\)](#)

[ICANN Learn](#)

Recommended entry courses:

- 1- [Course 154.1 At-Large: Welcome to Our World](#)
- 2- [Course 500.1 Policy Development Fundamentals](#)
- 3- [Course 506.1 ICANN Policy Development: A guide for At-Large Participants](#)

Policy

[At-Large Consolidated Policy Working Group Page](#)

[At-Large Internationalized Domain Name Working Group Page](#)

[ALAC Policy Comments & Advice](#)

Statement of Interests (SOI) – contact staff@atlarge.icann.org to create / how to update

In concluding ...

- ⦿ Thank you for joining us.
- ⦿ Questions?