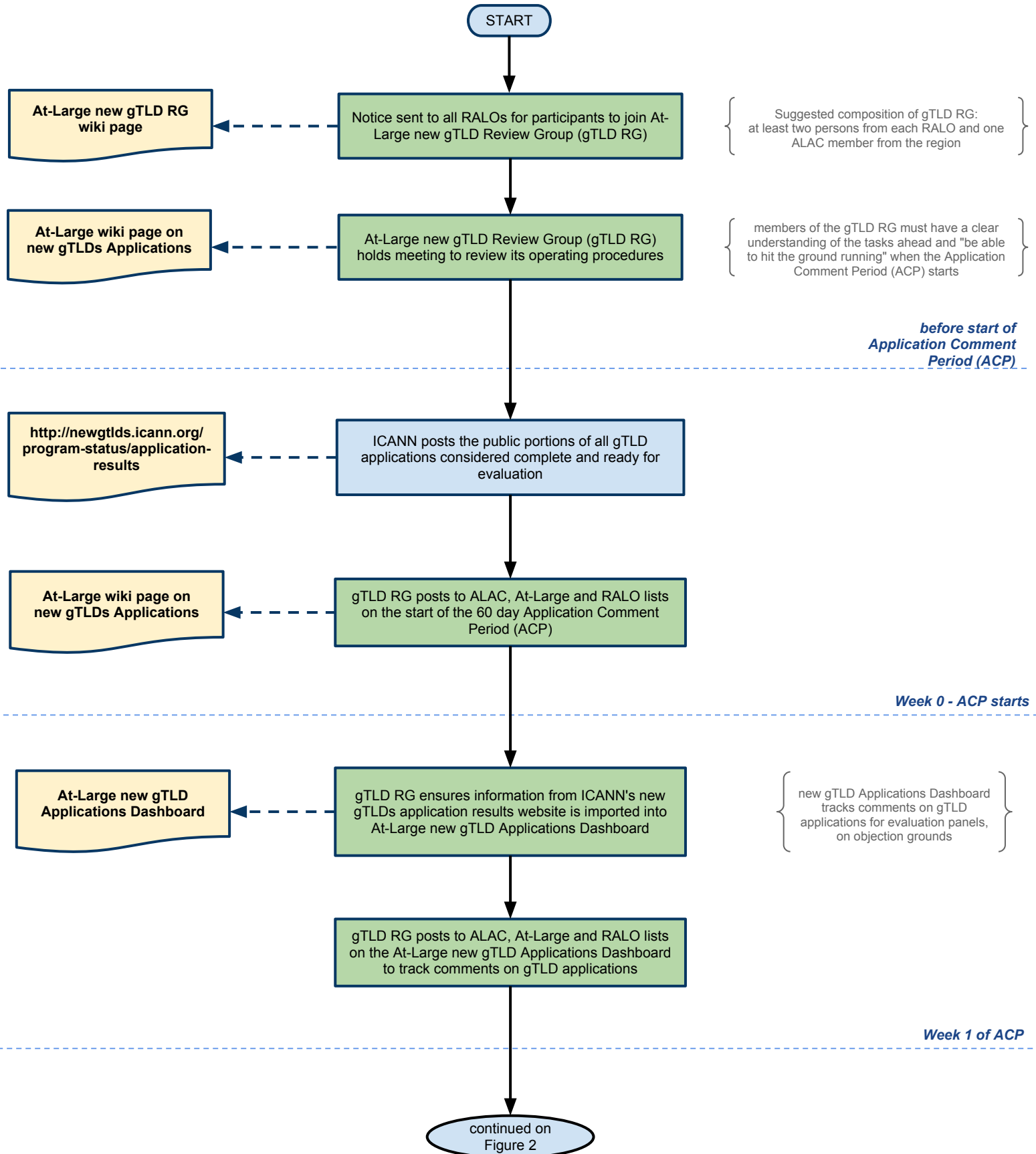


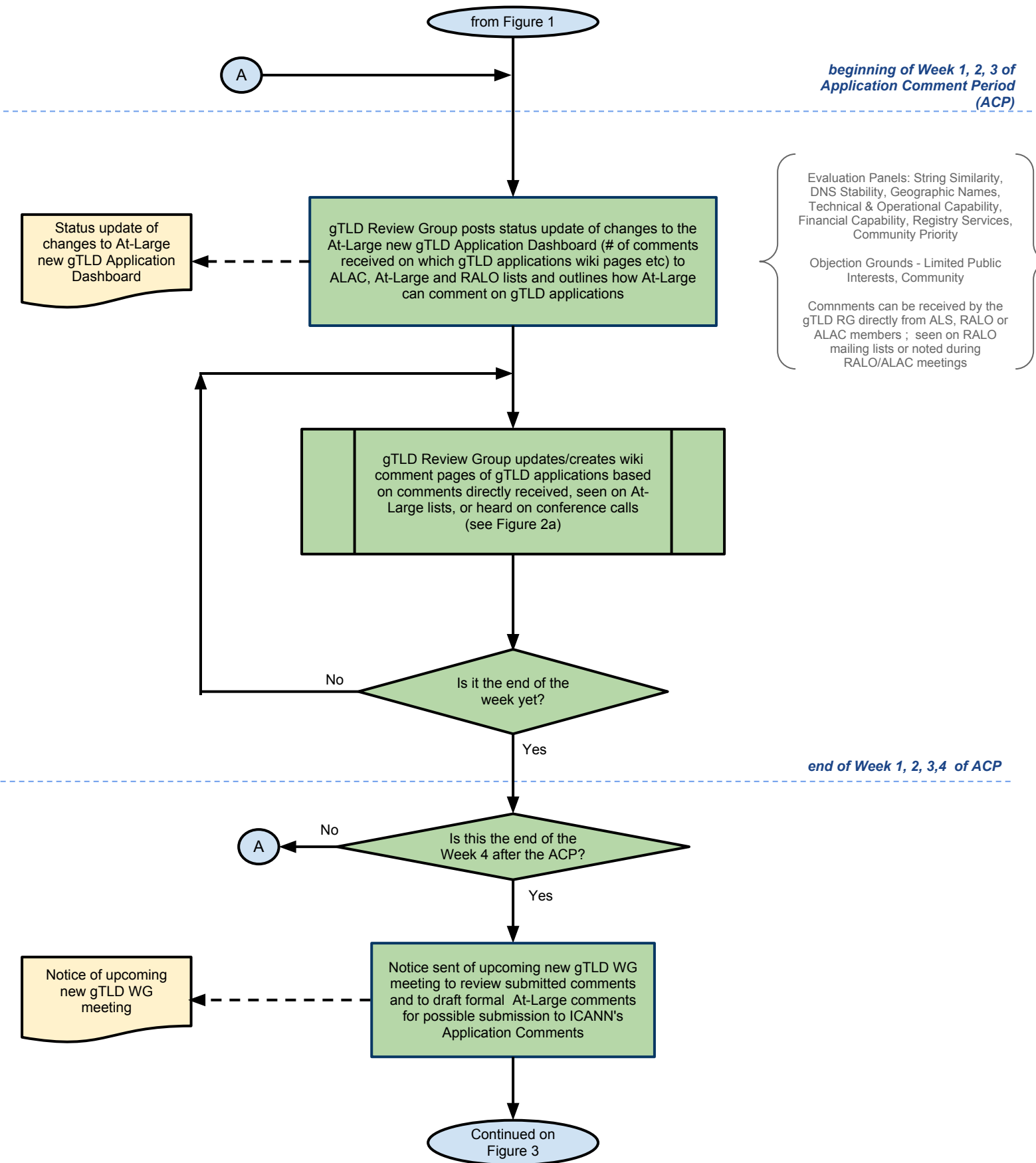
Draft At-Large/ALAC Process for considering and making objections to new gTLD Applications

Figure 1 - up to Week 1 of Application Comment Period



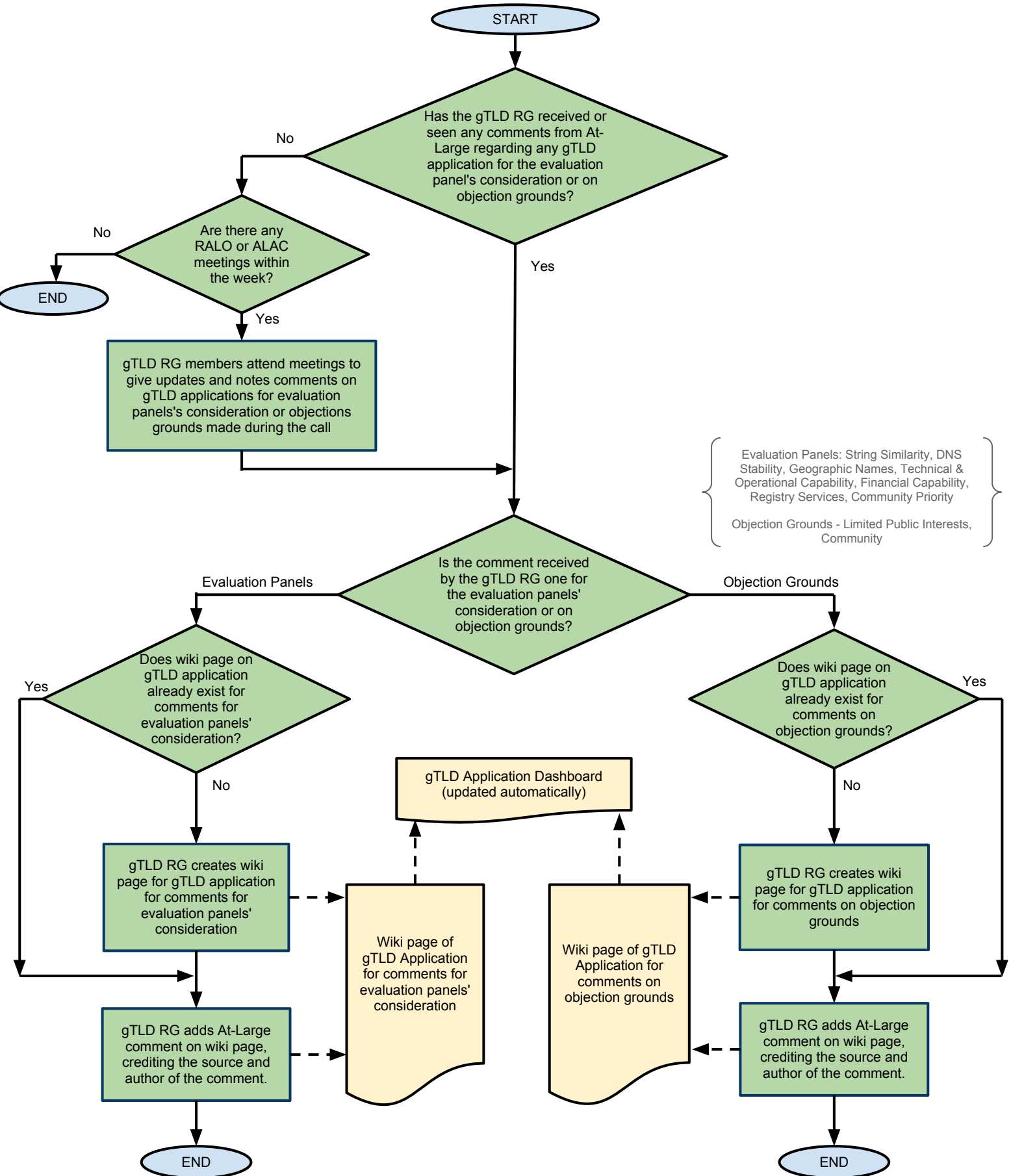
Draft At-Large/ALAC Process for considering and making objections to new gTLD Applications

Figure 2 - up to Week 4 of Application Comment Period



Draft At-Large/ALAC Process for considering and making objections to new gTLD Applications

Figure 2a - gTLD RG updates/creates wiki comment pages of gTLD applications based on comments directly received, seen on At-Large lists, or heard on conference calls



Draft At-Large/ALAC Process for considering and making objections to new gTLD Applications

Figure 3 - Week 5 of Application Comment Period

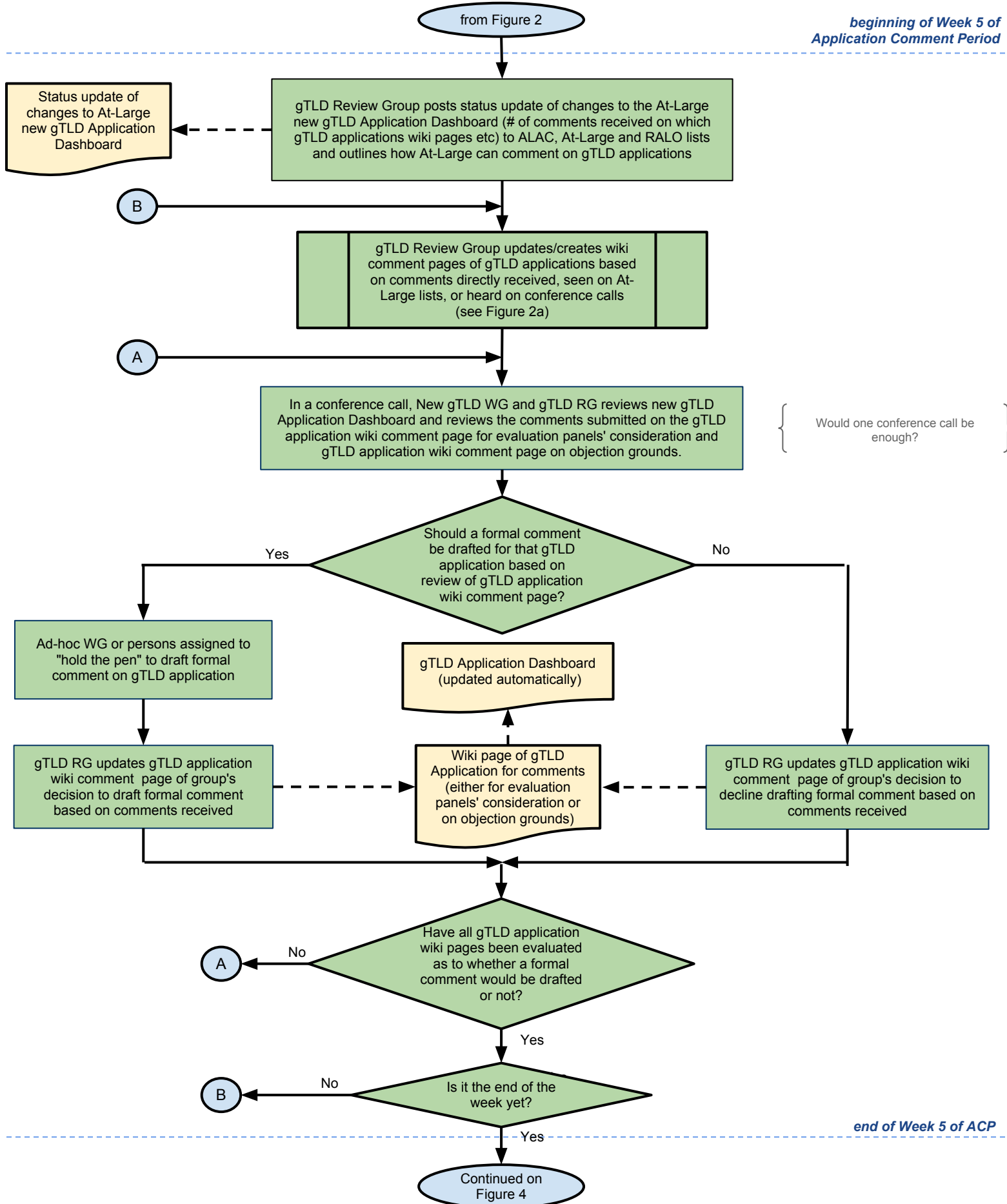


Figure 4 - Week 6,7 of Application Comment Period

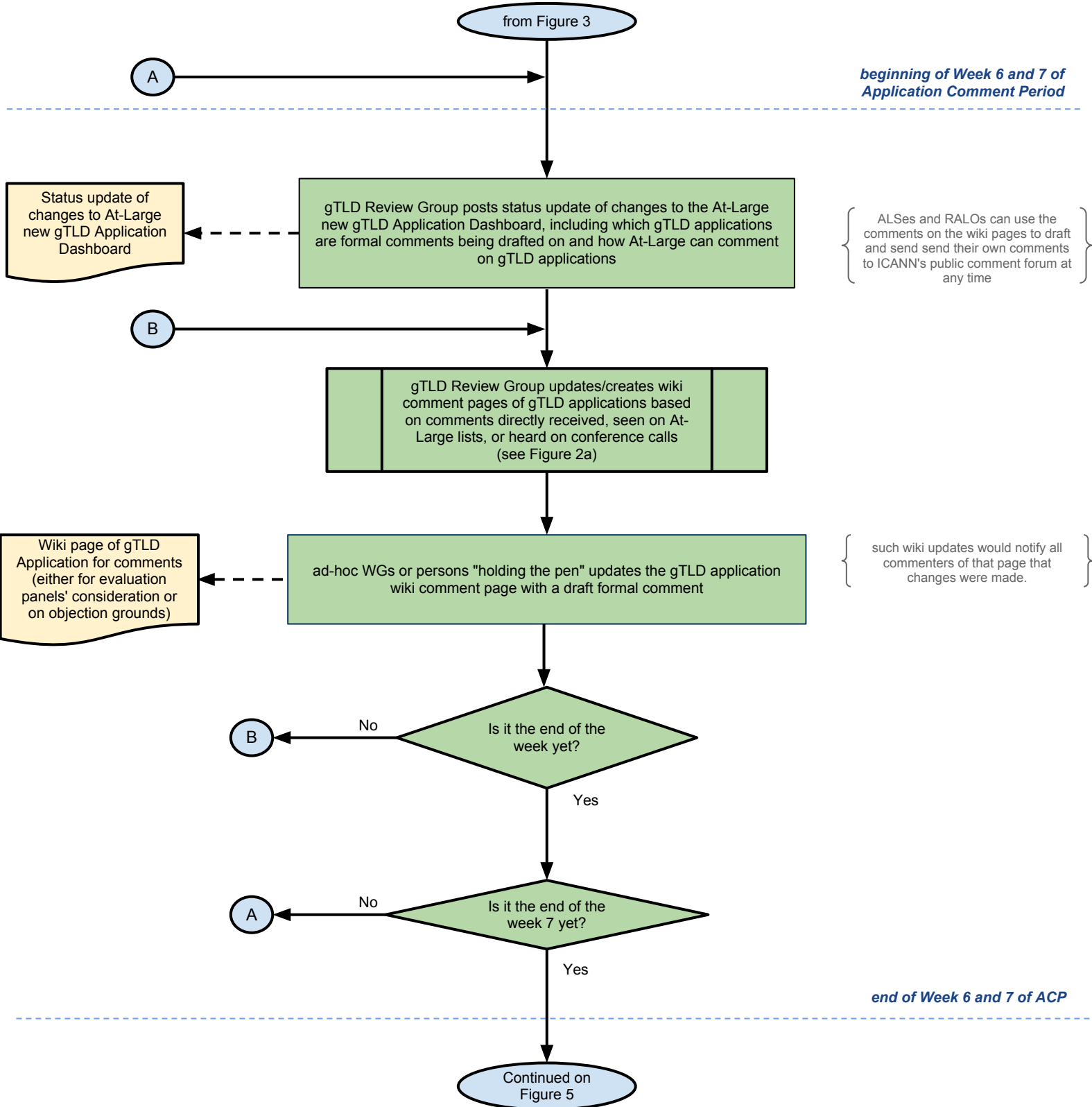


Figure 5 - Week 8 of Application Comment Period

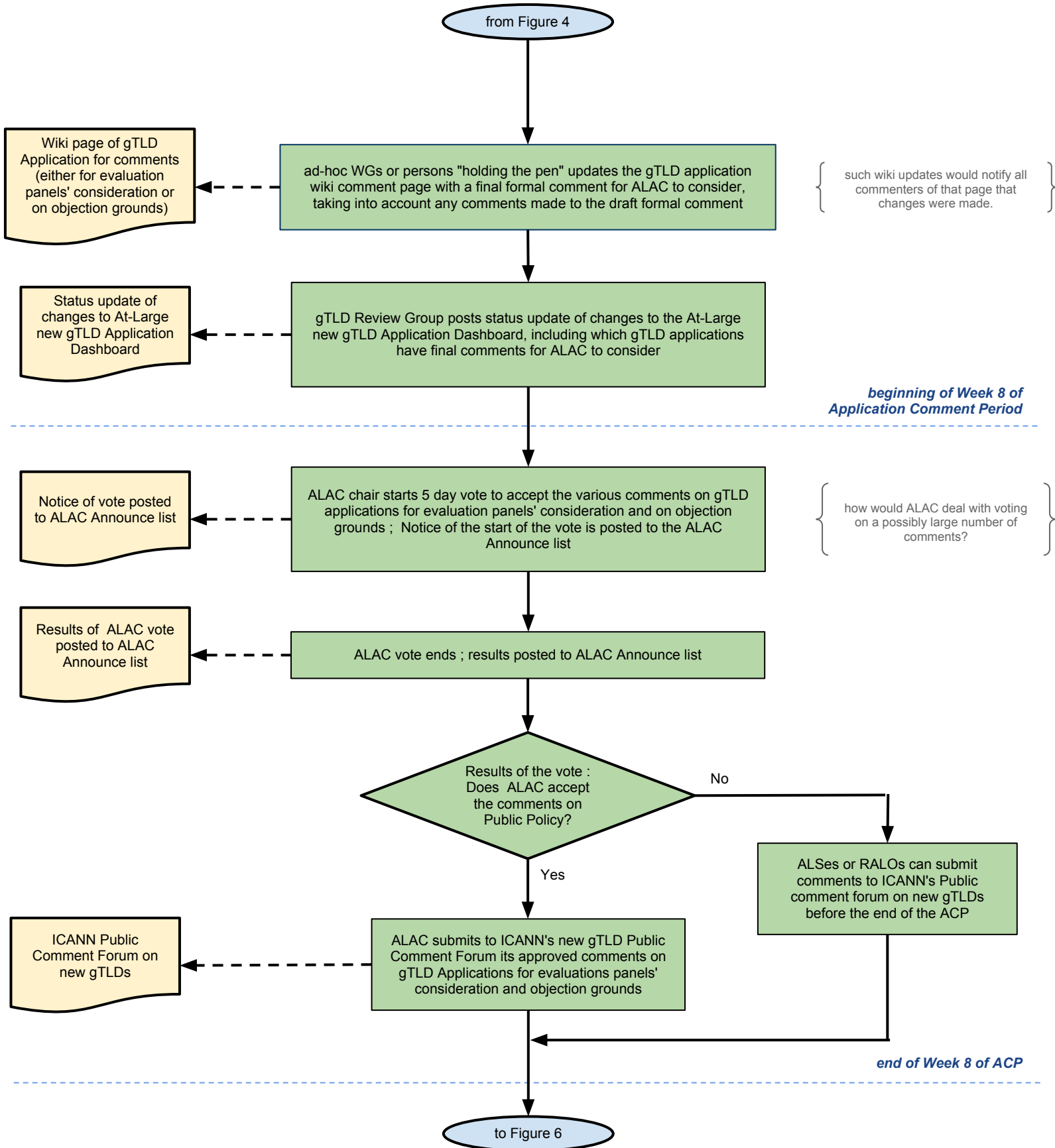
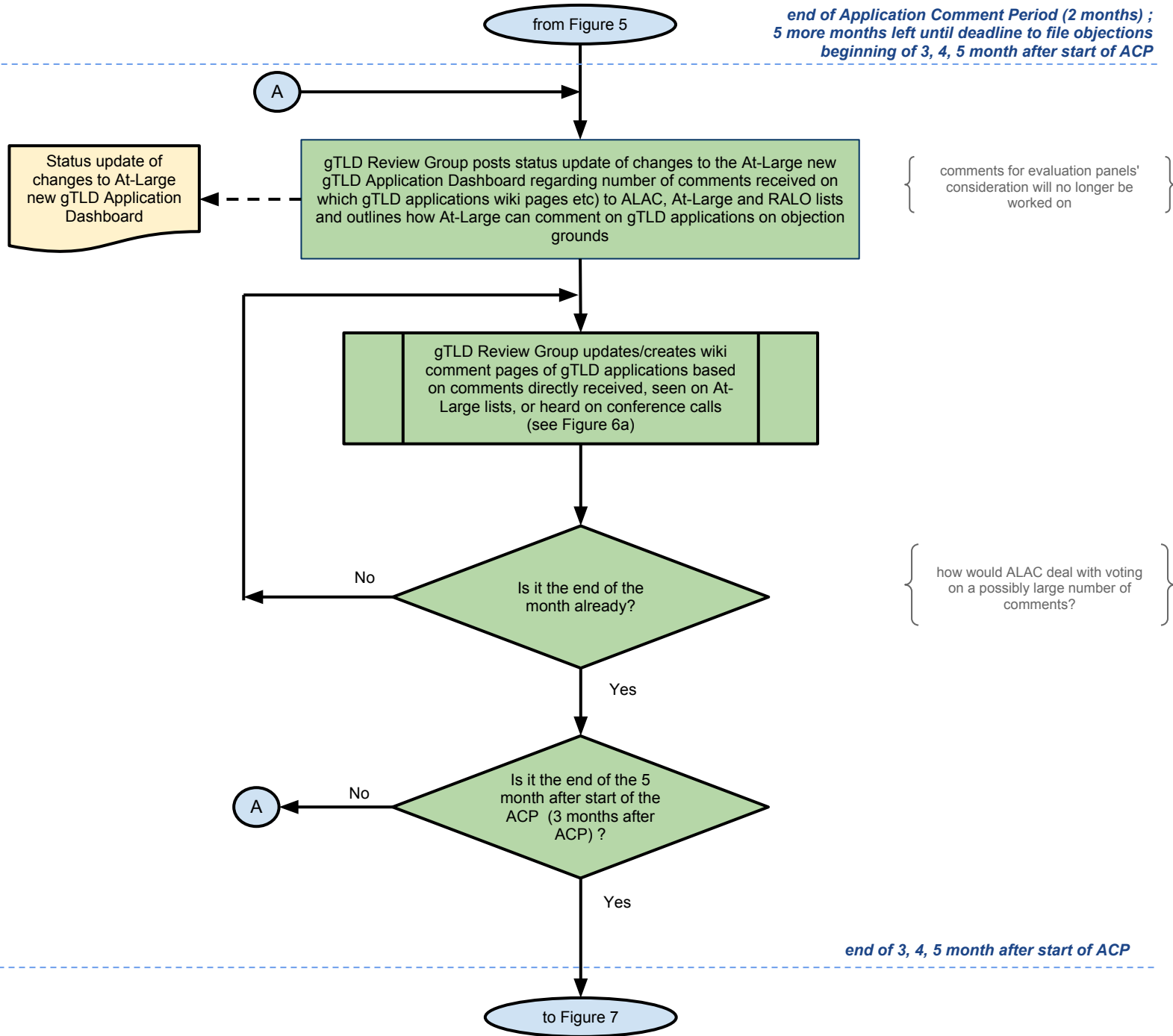
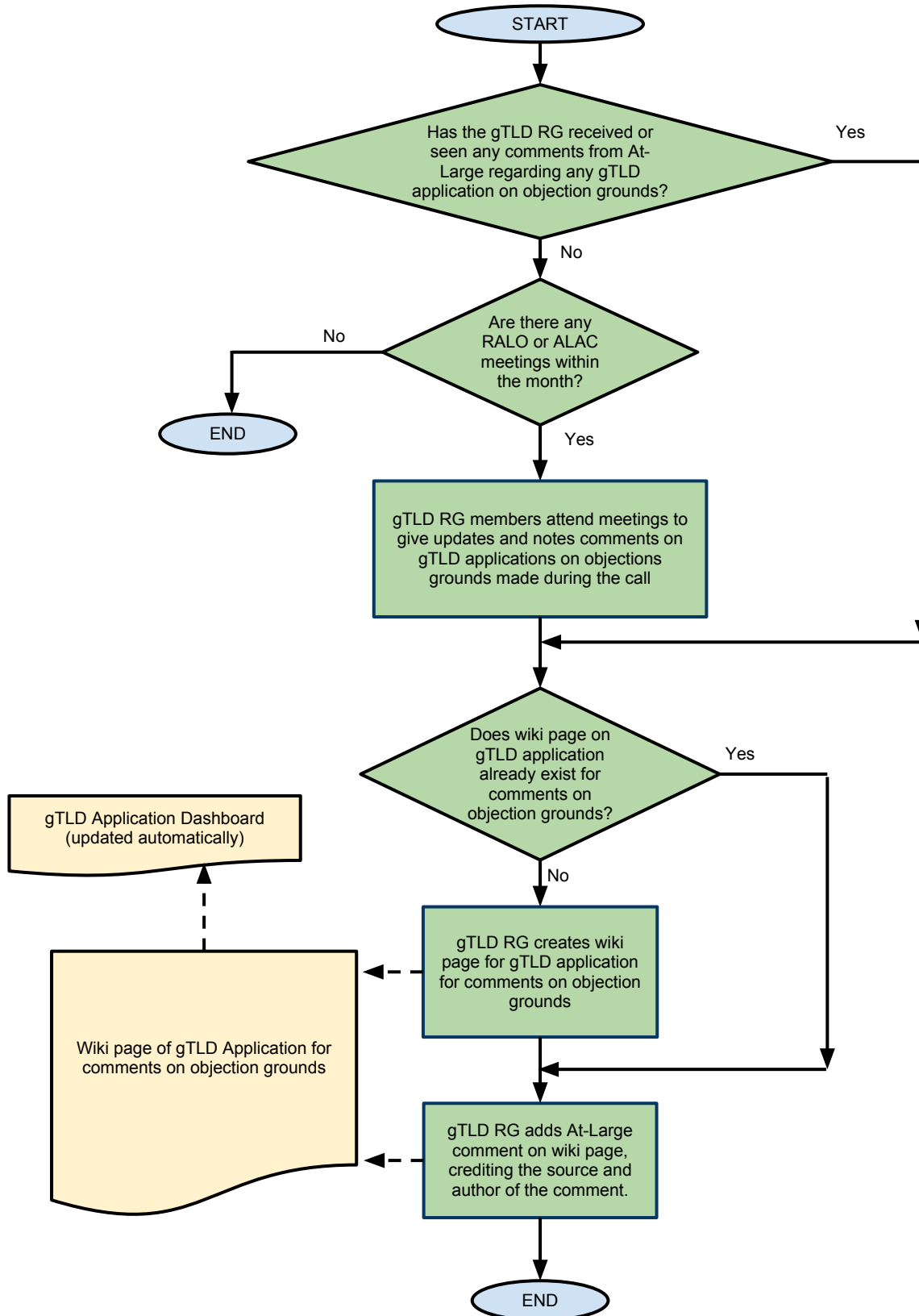


Figure 6 - 3rd to 5th month after start of Application Comment Period



Draft At-Large/ALAC Process for considering and making objections to new gTLD Applications

Figure 6a - gTLD RG updates/creates wiki comment pages of gTLD applications based on comments directly received, seen on At-Large lists, or heard on conference calls



Draft At-Large/ALAC Process for considering and making objections to new gTLD Applications

Figure 7 - 6 month after start of Application Comment Period

