



80 | POLICY
FORUM



Welcome package tool

Where we are

Natalia Filina, 12 June `24



How did we get started

1

It is an approved ABR24.

The At-Large Regional Welcome Package is an online resource to serve as a guide for new and current members of the At-Large community across all Regional At-Large Organizations. The dynamic and easy to use format. Content will include such information as key documents, infographics, videos, links, names, and application forms to provide a complete source of information on how best to start working in At-Large as a member or leader.

2

PLAN to do:

Assemble a working group
Build a work plan and timeline
Conduct a study of the best websites, graphics, infographics and choose a style
...
Write content
Get started with Comms team
Get started with a designer
Present the current version
Get a community response
Finish the work by August 2024

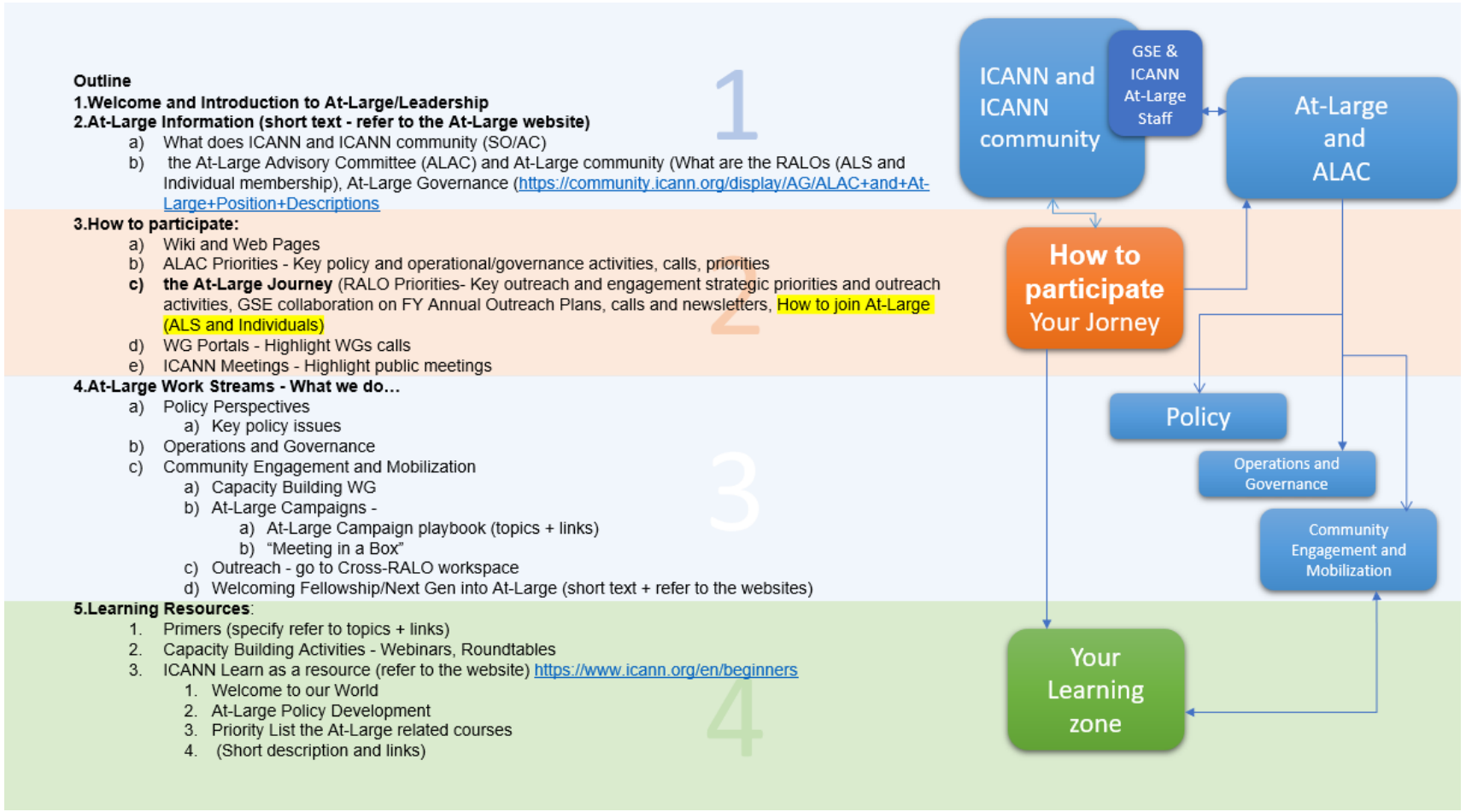
Present WP during ICANN81

3

Prediction for the future:

- Using WP for outreach and Engagement work
- Reducing the number of unique explanations
- Reducing printed materials
- Using WP content for the preparation the presentations

How did we get started



Outline

1. Welcome and Introduction to At-Large/Leadership

2. At-Large Information (short text - refer to the At-Large website)

- a) What does ICANN and ICANN community (SO/AC)
- b) the At-Large Advisory Committee (ALAC) and At-Large community (What are the RALOs (ALS and Individual membership), At-Large Governance (<https://community.icann.org/display/AG/ALAC+and+At-Large+Position+Descriptions>))

3. How to participate:

- a) Wiki and Web Pages
- b) ALAC Priorities - Key policy and operational/governance activities, calls, priorities
- c) **the At-Large Journey** (RALO Priorities- Key outreach and engagement strategic priorities and outreach activities, GSE collaboration on FY Annual Outreach Plans, calls and newsletters, **How to join At-Large (ALS and Individuals)**)
- d) WG Portals - Highlight WGs calls
- e) ICANN Meetings - Highlight public meetings

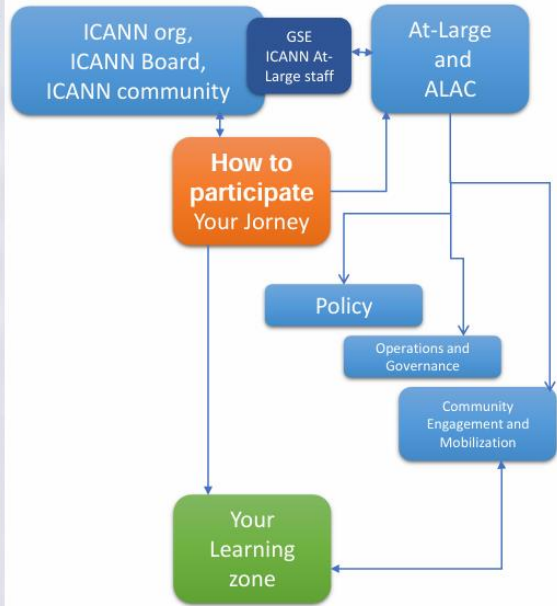
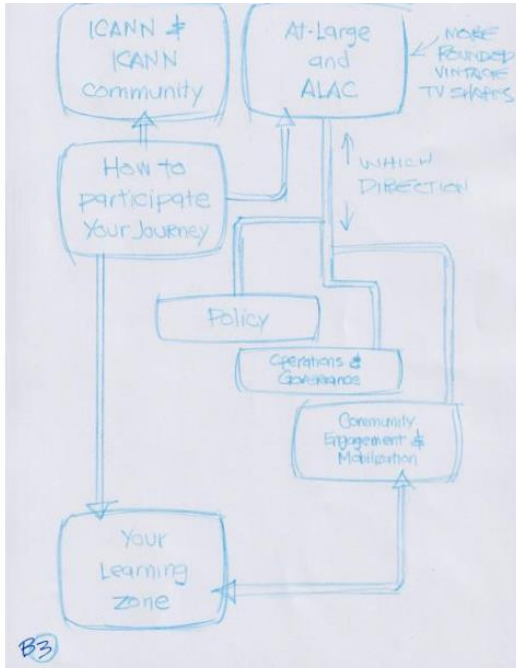
4. At-Large Work Streams - What we do...

- a) Policy Perspectives
 - a) Key policy issues
- b) Operations and Governance
- c) Community Engagement and Mobilization
 - a) Capacity Building WG
 - b) At-Large Campaigns -
 - a) At-Large Campaign playbook (topics + links)
 - b) "Meeting in a Box"
 - c) Outreach - go to Cross-RALO workspace
 - d) Welcoming Fellowship/Next Gen into At-Large (short text + refer to the websites)

5. Learning Resources:

- 1. Primers (specify refer to topics + links)
- 2. Capacity Building Activities - Webinars, Roundtables
- 3. ICANN Learn as a resource (refer to the website) <https://www.icann.org/en/beginners>
 - 1. Welcome to our World
 - 2. At-Large Policy Development
 - 3. Priority List the At-Large related courses
 - 4. (Short description and links)

How we are working with a content



ON one page

At-Large and ALAC

1b

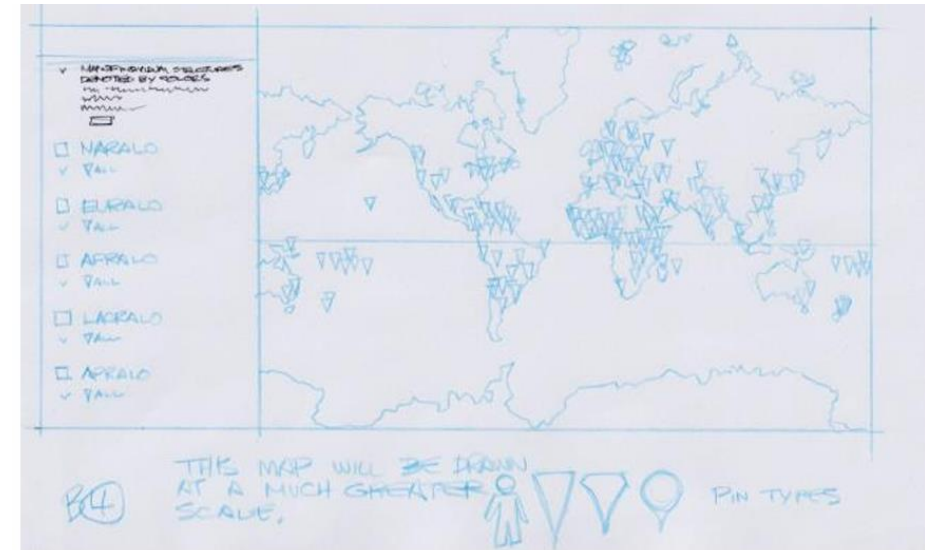
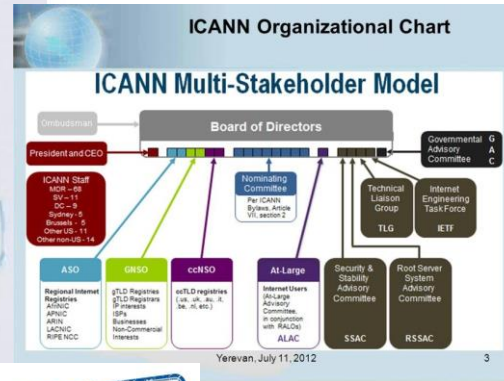
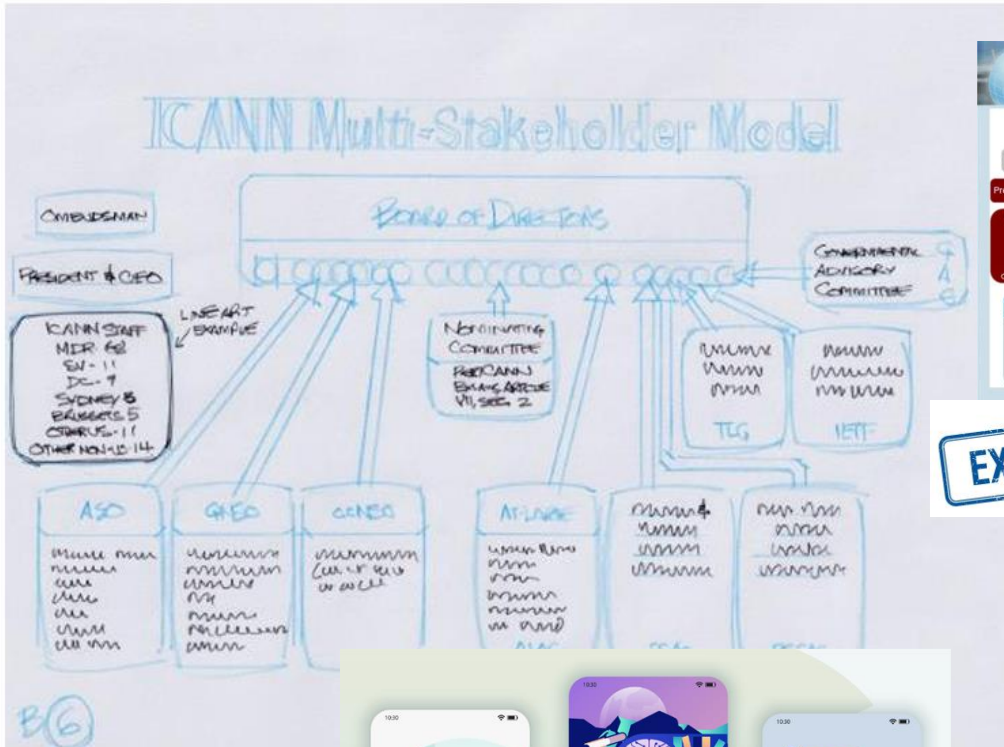


At-Large history



EXAMPLE

How we are working with a content



EXAMPLE

Primers

Keep

Buy & Sell

Exchange

At-Large learning zone

Online Library

Learning Process

Language Courses

ICANN resources

Plan Your Trip

Select the Date

Enjoy Your Trip

Plan Your Trip

Select the Date

Enjoy Your Trip

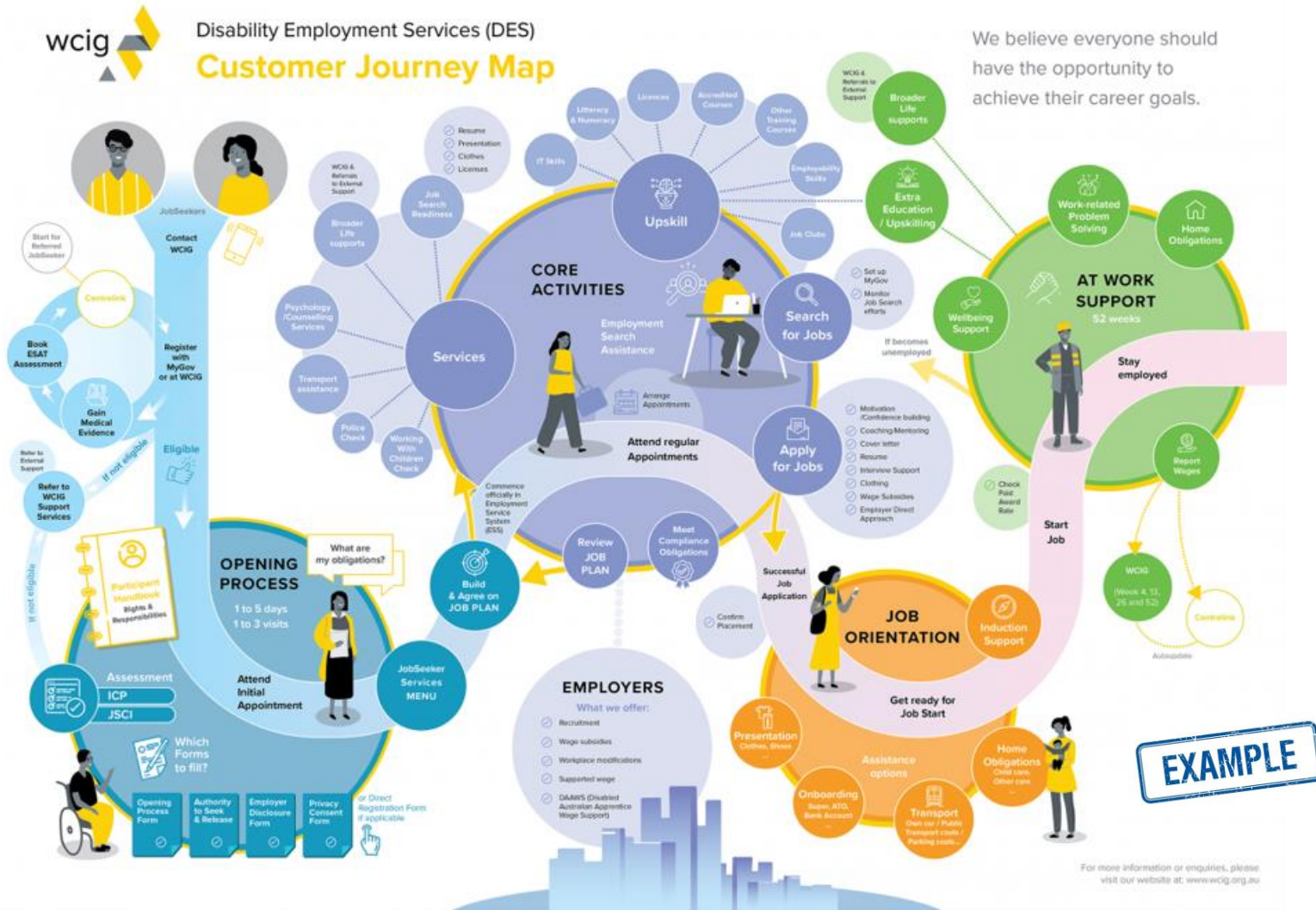
Plan Your Trip

Select the Date

Enjoy Your Trip

EXAMPLE

The heart of the WP – Journey map



At-Large Journey

(Explanation of recommended step by step journey)

The first presentation of WP

