



At-Large Improvements Work Team D



Summary of proposals to ALAC regarding
Recommendations 8, 12, 13
outlined in Final Report of the
ALAC Review Working Group





Proposals for Recommendation 8

Rec 8 - ALAC may request public comment period be extended to 45 days

Rec 12 - Consumer representatives should have input into decisions and policy advice

Rec 13 - ALAC/At-Large policy advice mechanisms should be strengthened

- Requested extension can be for any number of days, determined by ALAC.
- ALAC be able to request extension at various stages of the Policy Advice Development Process.
- Adoption of a Extension Request Process similar to Figure 2, to be evaluated in conjunction with the proposed Policy Advice Development process in Figure 1 as part of Recommendation #13.





Proposals for Recommendation 8

Rec 8 - ALAC may request public comment period be extended to 45 days

Rec 12 - Consumer representatives should have input into decisions and policy advice

Rec 13 - ALAC/At-Large policy advice mechanisms should be strengthened

- ICANN Staff "Team" establish and maintain a "Policy Publish Schedule" (PPS).

Each entry in the PPS should have the policy name, an excerpt of what the policy is about, the SO responsible and a tentative date for completion (before translation).

The ICANN Staff "Team" can comprise the ICANN staff persons assigned to the various AC/SOs and the Language Services Manager to plan and allocate resources for needed policy translations in time.





Proposals for Recommendation 12

Rec 8 - ALAC may request public comment period be extended to 45 days

Rec 12 - Consumer representatives should have input into decisions and policy advice

Rec 13 - ALAC/At-Large policy advice mechanisms should be strengthened

- Create an consumer outreach document for use by At-Large in their outreach efforts to get consumer organisations involved in ICANN. Work is ongoing with a [3rd draft of the consumer outreach document](#) produced.





Proposals for Recommendation 13

Rec 8 - ALAC may request public comment period be extended to 45 days

Rec 12 - Consumer representatives should have input into decisions and policy advice

Rec 13 - ALAC/At-Large policy advice mechanisms should be strengthened

- Policies from ICANN and its ACs/SOs should be available in at least English, Spanish and French at the start of the public comment period.
- The deadline for public comment on a policy can be longer than 30 days.
- Adoption of a Policy Advice Development process as illustrated in Figure 1.





Proposals for Recommendation 13

Rec 8 - ALAC may request public comment period be extended to 45 days

Rec 12 - Consumer representatives should have input into decisions and policy advice

Rec 13 - ALAC/At-Large policy advice mechanisms should be strengthened

- ALAC should establish a Policy Review Committee (PRC) to review current and upcoming ICANN policies out for comment as well as policy issues raised by At-Large.

The ALAC PRC will be a standing committee comprising of:

- ALAC Rapporteur,
- ALAC liaisons to the various ACs / SOs/ cross-constituency WGs
- at least two representatives from each RALO (not necessarily the RALO chair or secretariat)





Proposals for Recommendation 13

Rec 8 - ALAC may request public comment period be extended to 45 days

Rec 12 - Consumer representatives should have input into decisions and policy advice

Rec 13 - ALAC/At-Large policy advice mechanisms should be strengthened

The benefits of the Policy Review Committee:

- The PRC offers ALSes in the regions more say in the review of policies out for comment.
- Via the PRC, ALSes and RALOs in At-Large can raise awareness of ICANN related policy issues or concerns to ALAC that are not being considered by ICANN.

The ALAC and the Policy Review Committee will use the Policy Publish Schedule to review upcoming policies as illustrated in Figure 3.

It is anticipated that the RALOs would poll/encourage ALSes at monthly RALO conference calls and electronic communication (emails, polls, etc) to voice any policy issues/concerns by ALSes which can then be reviewed by the PRC.



Figure 1 - ALAC / At- Large Policy Advice Development Flowchart

y = length of public comment period in calendar days
 x = number of days added to public comment deadline once extension is approved

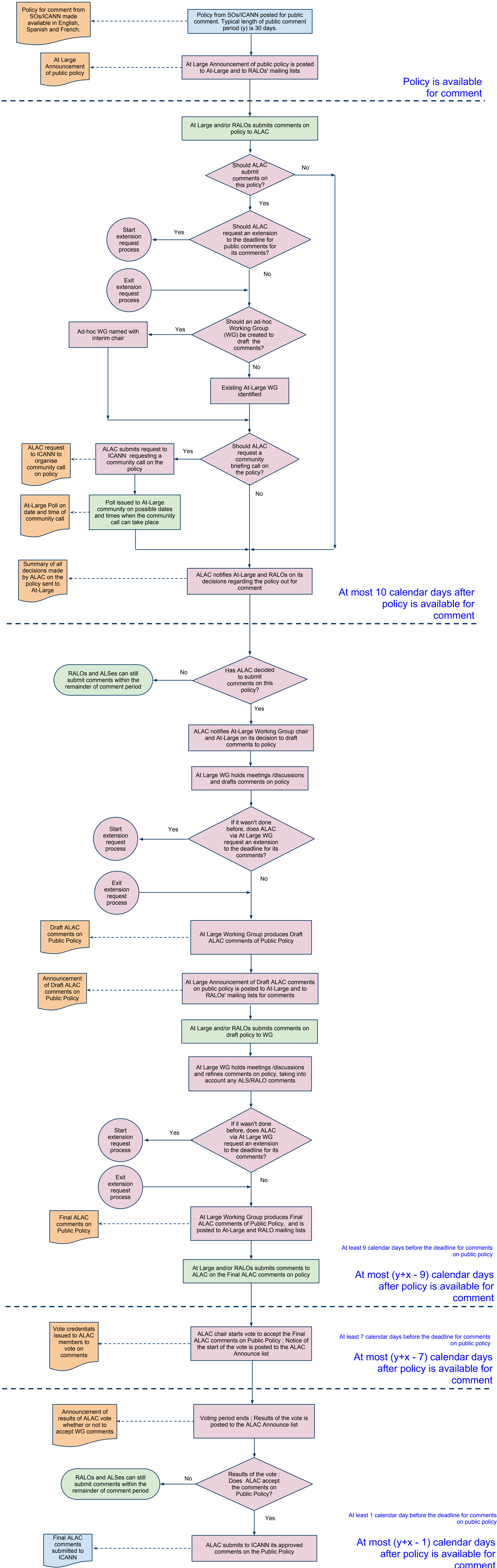


Figure 2 - How ALAC may request public comment period be extended for (x) number of days

y = length of public comment period in calendar days
 x = number of days added to public comment deadline once extension is approved

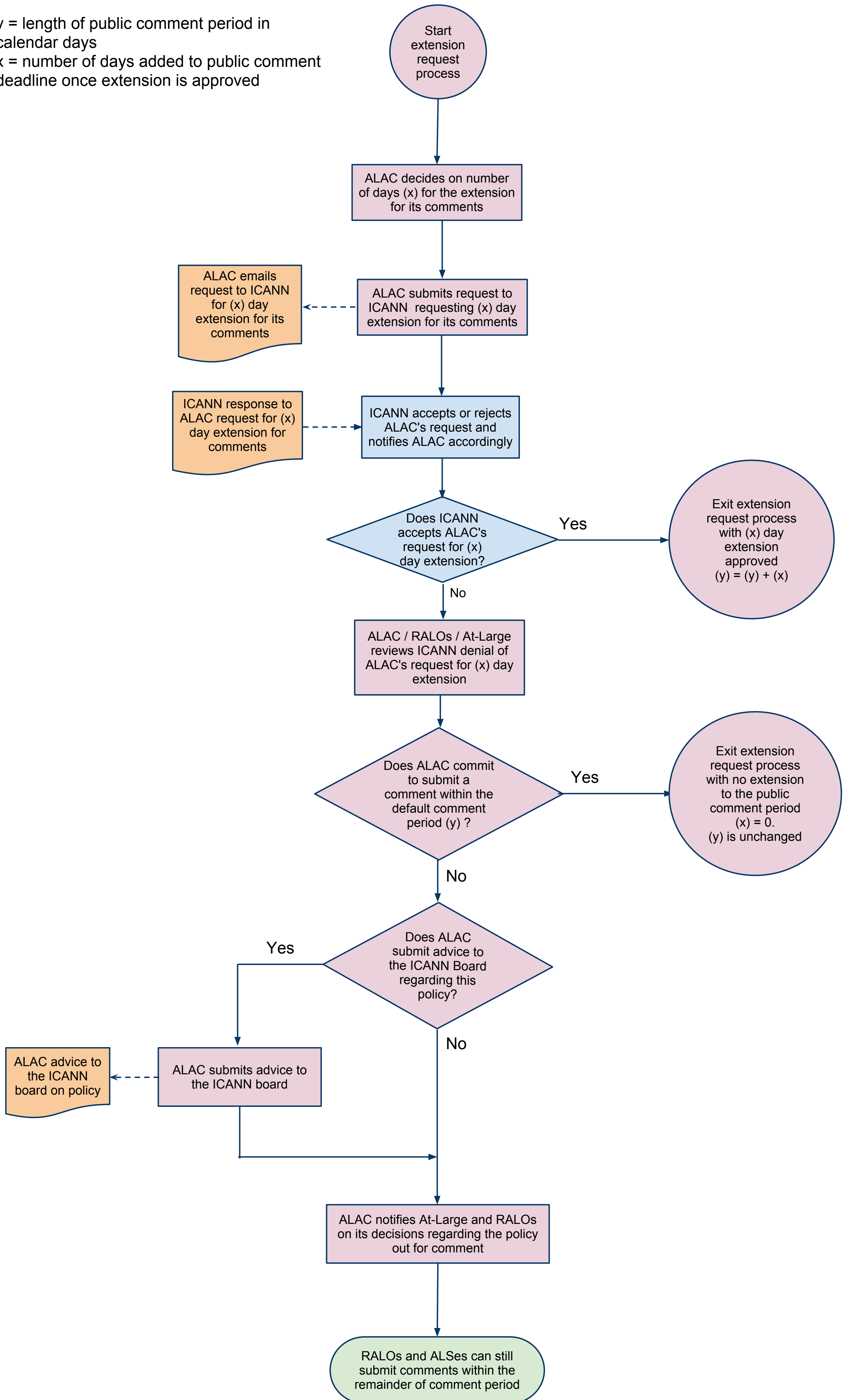


Figure 3 - At-Large/ALAC Policy Review Committee

