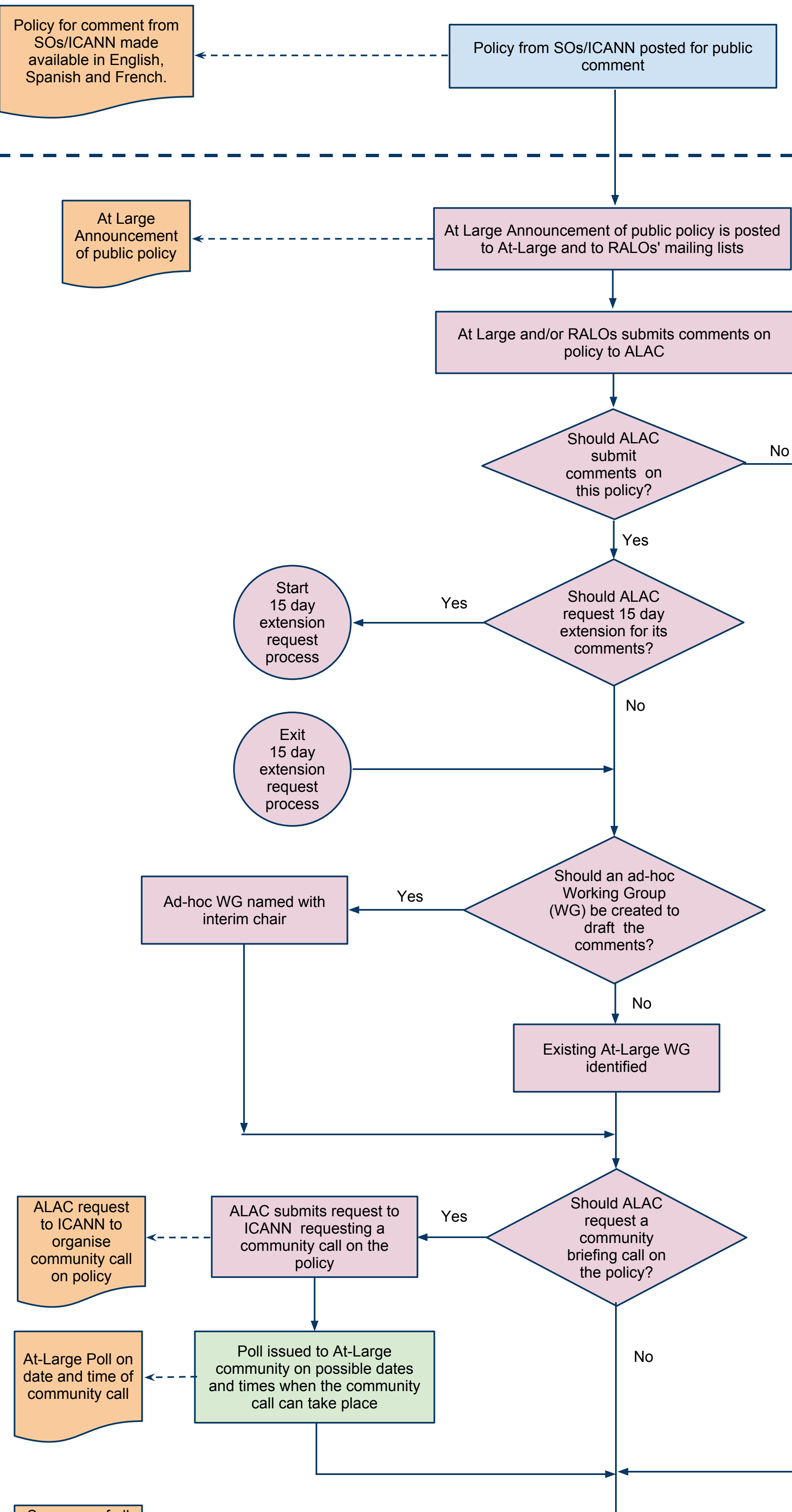


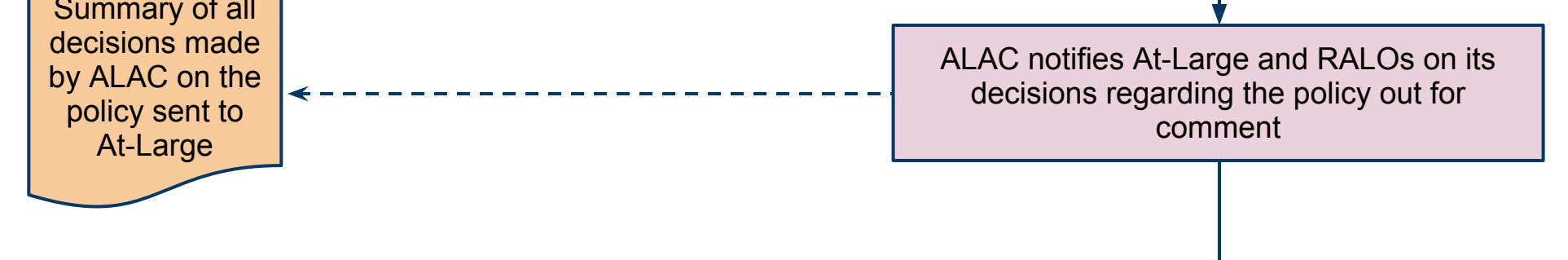


# ALAC / At- Large Policy Advice Development Flowchart

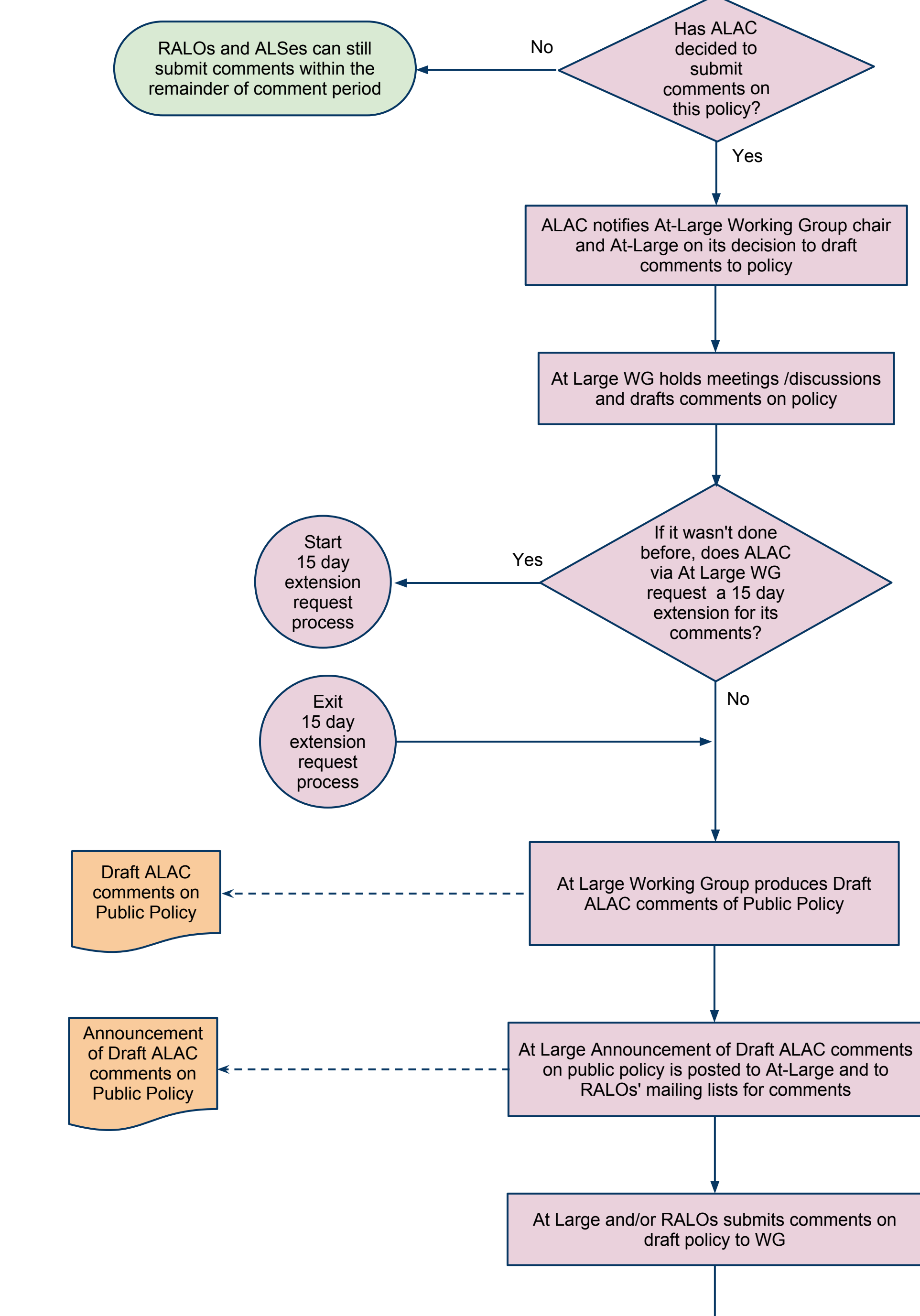
Before Policy is made available for comment



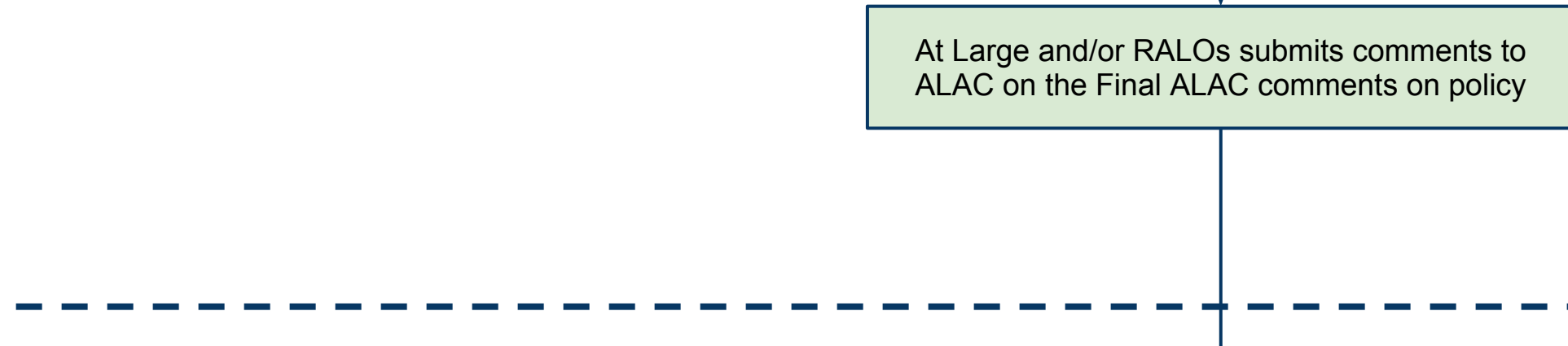
Policy is available for comment



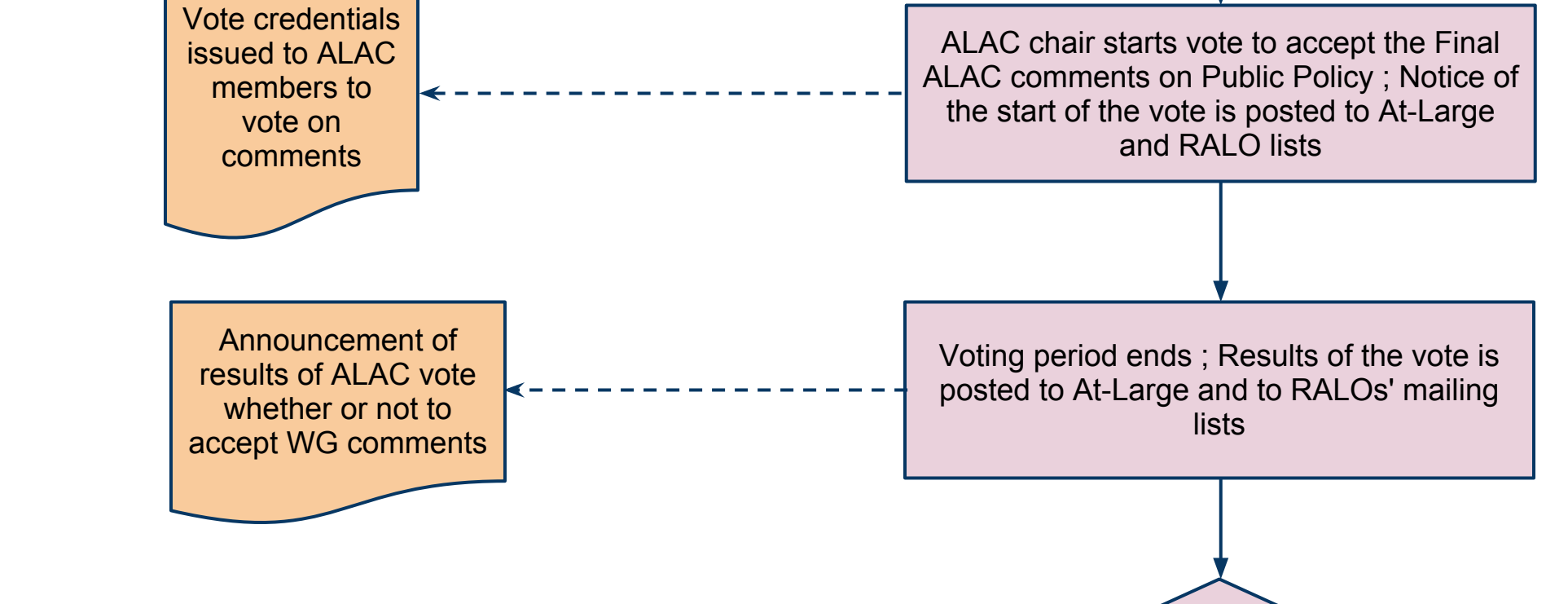
At most 10 days after policy is available for comment



At most 21 days or 36 days (if 15 day extension is granted) after policy is available for comment



At most 23 days or 38 days (if 15 day extension is granted) after policy is available for comment



At most 29 days or 44 days (if 15 day extension is granted) after policy is available for comment

