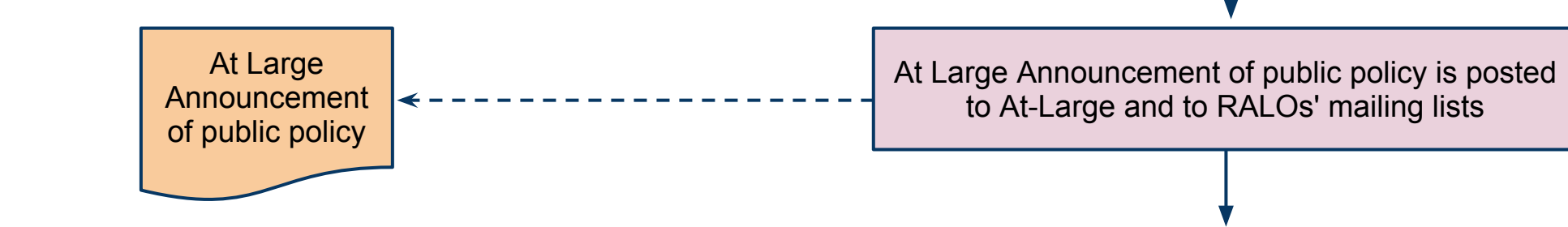


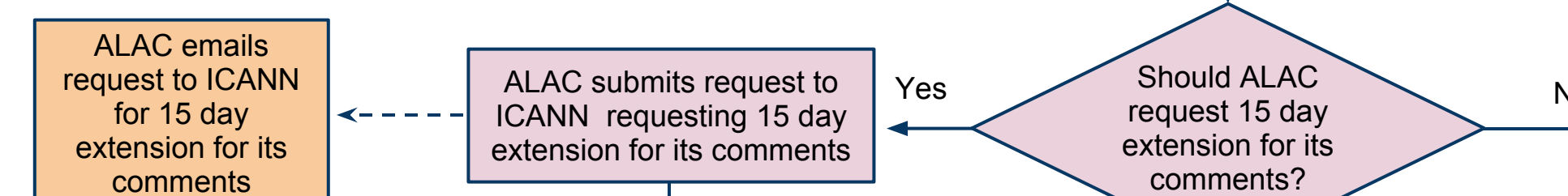


Policy for comment from SOs/ICANN made available in English, Spanish and French.

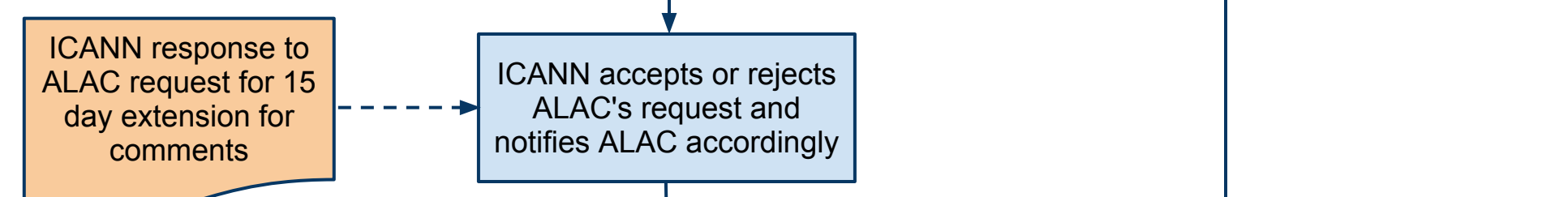
Policy is available for comment



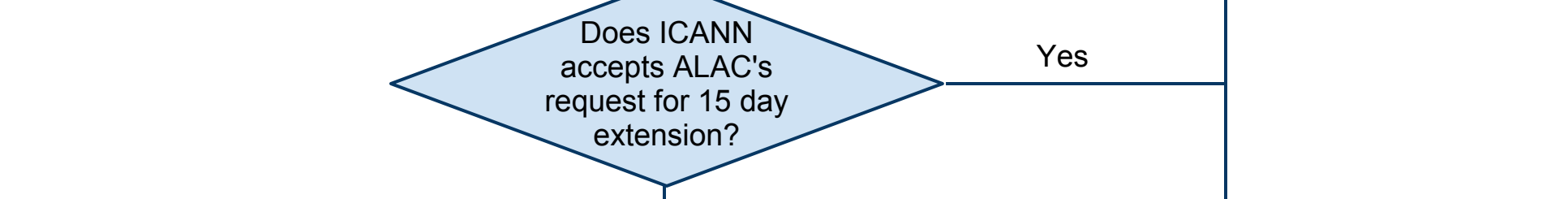
At Large Announcement of public policy



ALAC emails request to ICANN for 15 day extension for its comments



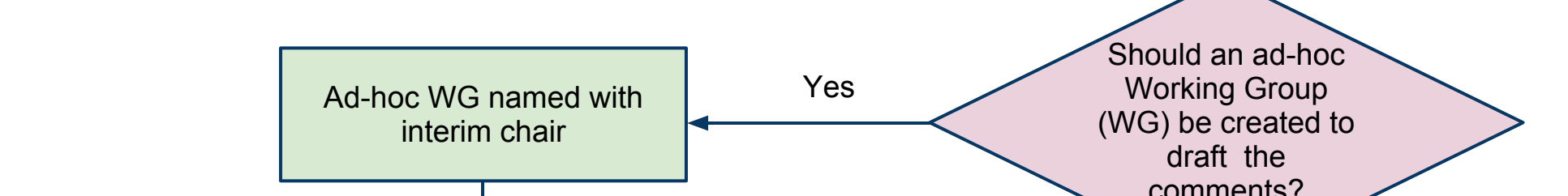
ICANN response to ALAC request for 15 day extension for comments



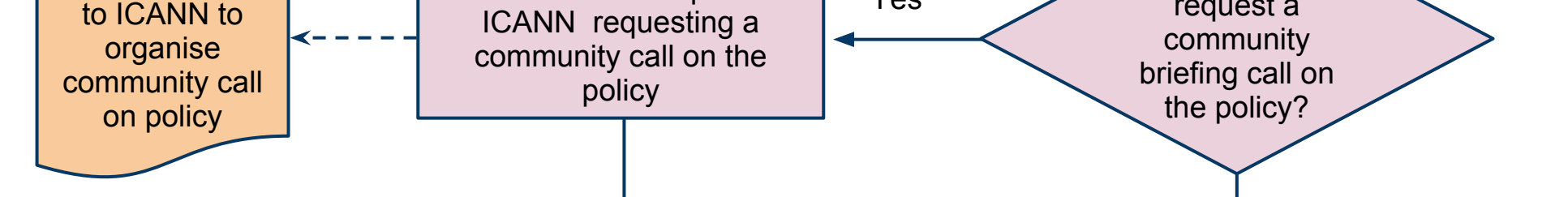
ICANN response to ALAC request for 15 day extension for comments



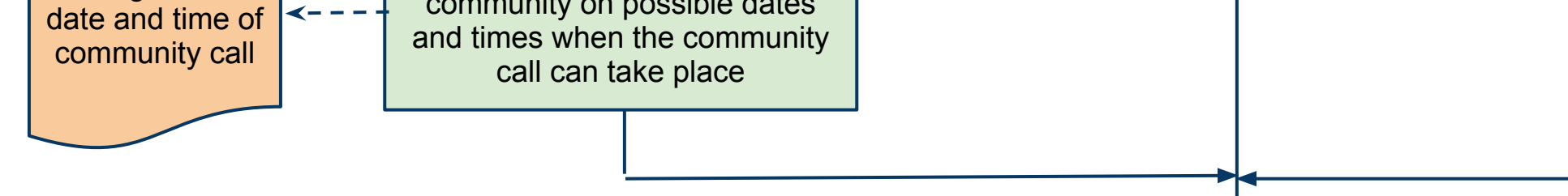
Does ICANN accept ALAC's request for 15 day extension?



Ad-hoc WG named with interim chair



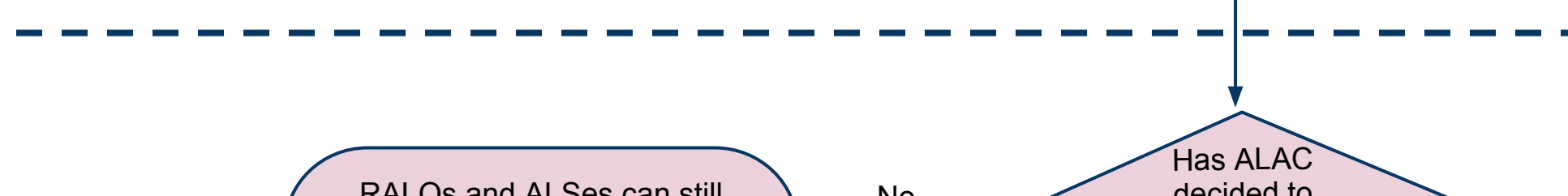
ALAC request to ICANN to organise community call on policy



At-Large Poll on date and time of community call



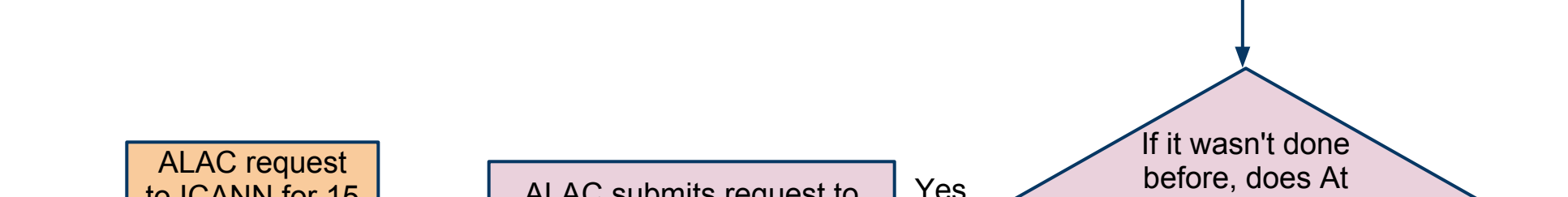
Summary of all decisions made by ALAC on the policy sent to At-Large



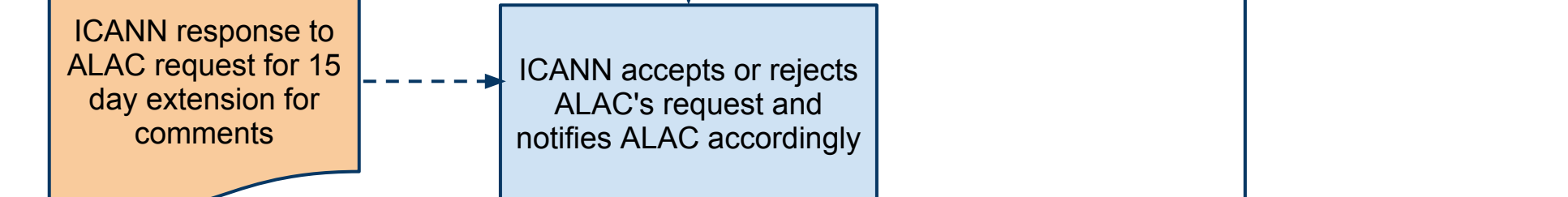
At most 10 days after policy is available for comment



RALOs and ALSes can still submit comments within the remainder of comment period



ALAC request to ICANN for 15 day extension for its comments



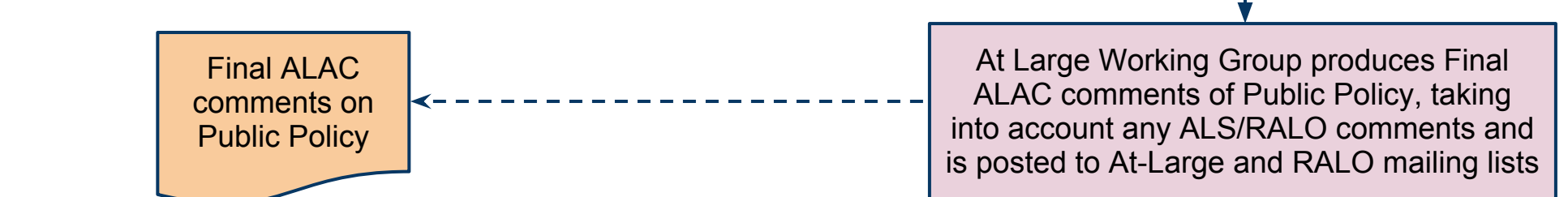
ICANN response to ALAC request for 15 day extension for comments



Draft ALAC comments on Public Policy



Announcement of Draft ALAC comments on Public Policy



Final ALAC comments on Public Policy

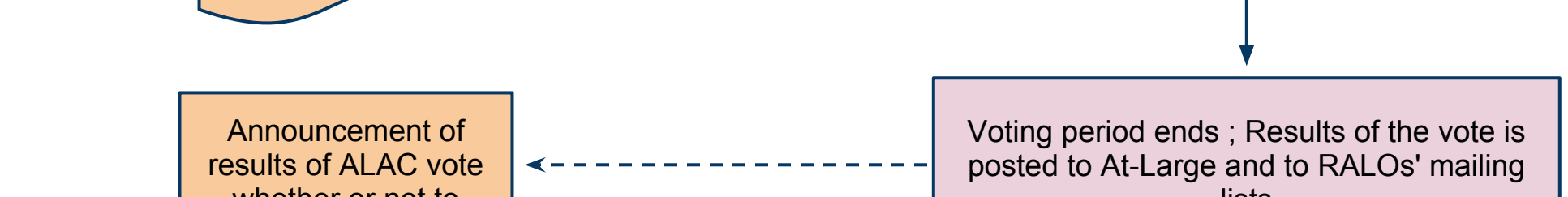
At most 21 days or 36 days (if 15 day extension is granted) after policy is available for comment



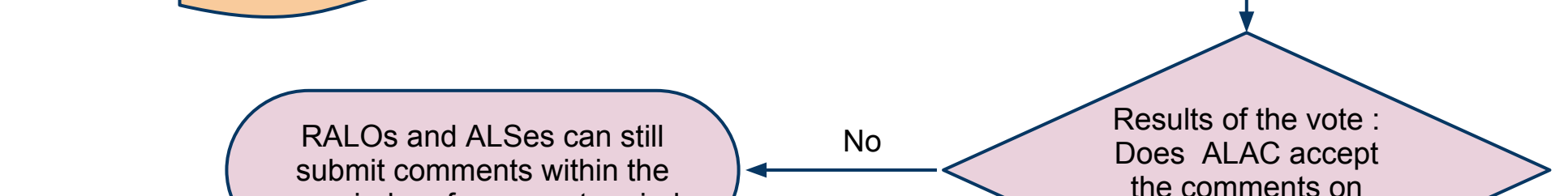
At most 23 days or 38 days (if 15 day extension is granted) after policy is available for comment



Vote credentials issued to ALAC members to vote on comments



Announcement of results of ALAC vote whether or not to accept WG comments



RALOs and ALSes can still submit comments within the remainder of comment period

At most 29 days or 44 days (if 15 day extension is granted) after policy is available for comment



Final ALAC comments submitted to ICANN