



At-Large Improvements Work Team D

*Implementing Recommendations
8, 12 and 13*

One World

One Internet



12/2/2010



Recommendation 8

The public comment period should remain 30 days,
except in the case of special circumstances,
for which ALAC may request an extension to 45 days

*At-Large Improvements
Work Team D -
Implementing
Recommendations 8,12,13*





Recommendation 12

ICANN should develop a mechanism that allows the voice of those bodies recognised as representing consumer interests....

...to be heard at critical points in key decisions and to provide input into policy processes.

*At-Large Improvements
Work Team D -
Implementing
Recommendations 8,12,13*





Recommendation 13

ALAC should strive to provide policy advice on any issues that affect individual Internet users (since providing policy advice is part of ALAC's purpose).

To this end, the following should be strengthened:

- The processes within ALAC for developing and providing policy advice;
- The processes within the SOs for requesting input from ALAC on policy issues; and
- The processes within the SOs, ACs, and the Board for providing ALAC with feedback about how its policy advice has been used.

*At-Large Improvements
Work Team D -
Implementing
Recommendations 8,12,13*



Members of Work Team D

*At-Large Improvements
Work Team D -
Implementing
Recommendations 8,12,13*

AFRALO	Dave Kissoondoyal
APRALO	Cheryl Langdon-Orr, Hong Xue
EURALO	Rudi Vansnick (Co-chair)
LACRALO	Dev Anand Teelucksingh (Co-chair) Antonio Medina Gomez Carlos Vera
NARALO	Beau Brendler Chris Grunderman



*At-Large Improvements
Work Team D -
Implementing
Recommendations 8,12,13*

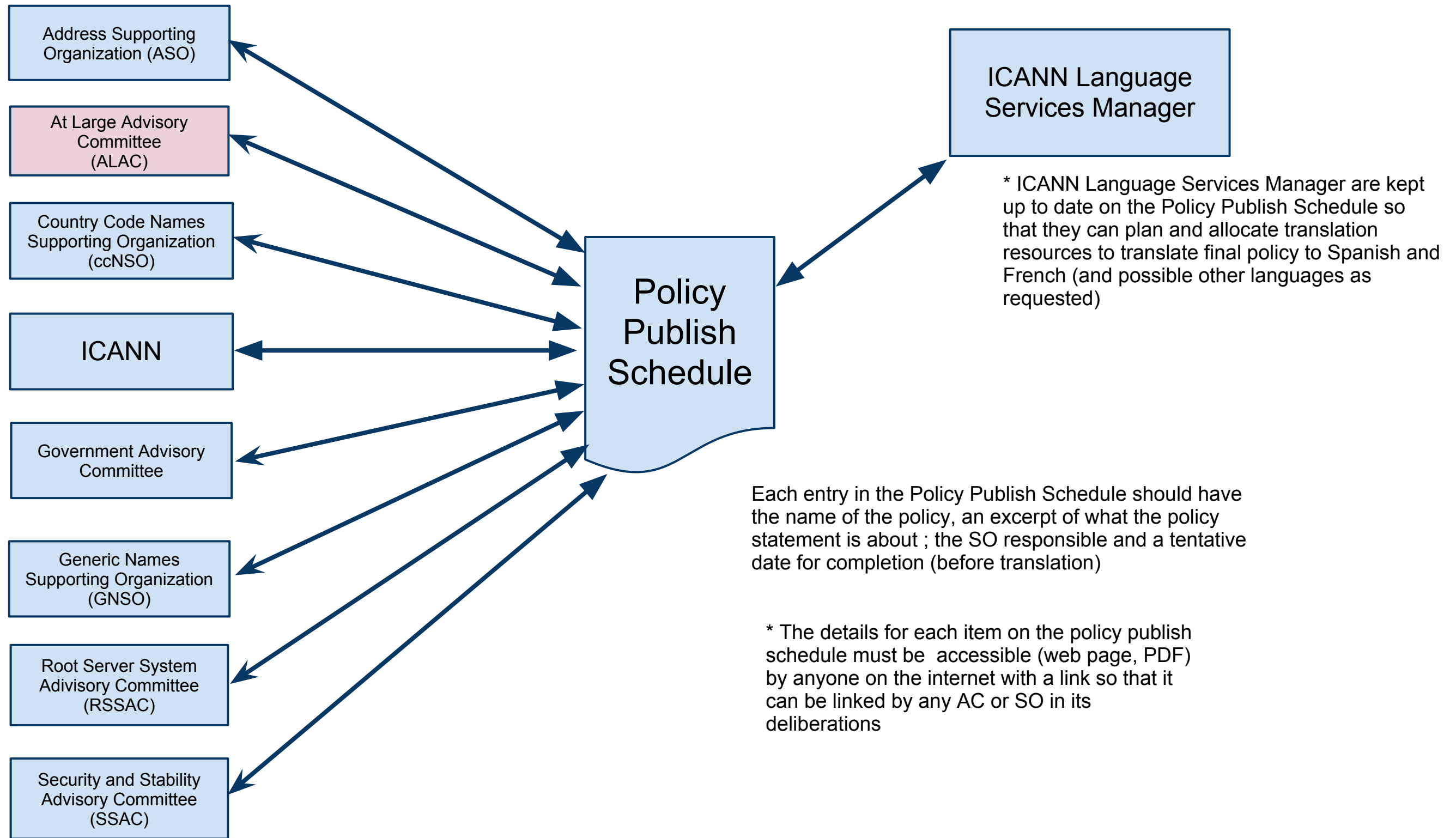
WT D - Flowcharts

- Before Policy is available for comment
 - ICANN and SO maintain a Policy Publish Schedule
- At-Large/ALAC activities before policy is published
- ALAC / At-Large Policy Advice Development Flowchart
- How ALAC may request public comment period be extended to 45 days



Before Policy is available for comment

ICANN and SOs maintain a policy publish schedule

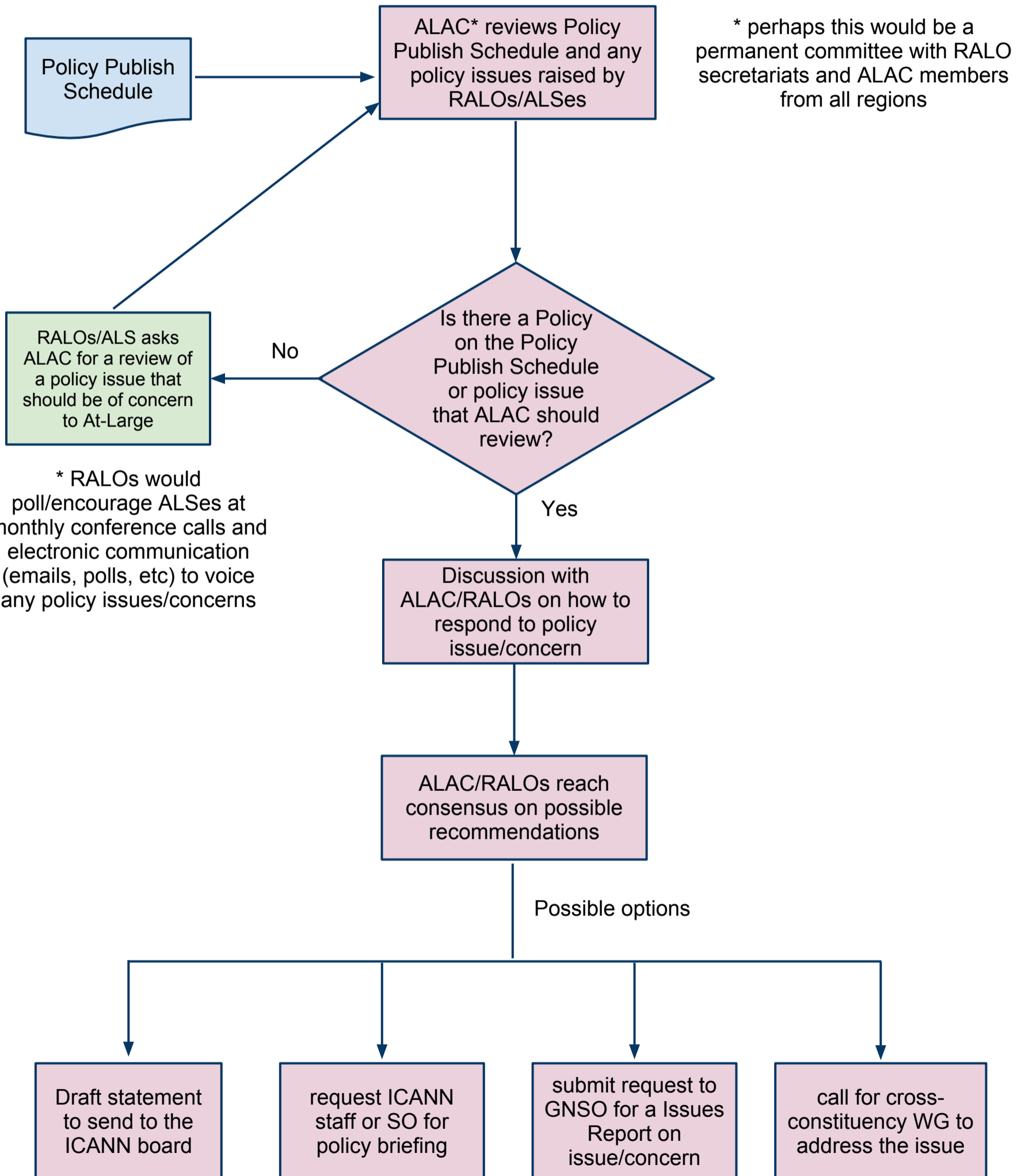


ICANN and SOs can :

- * track changes to the schedule
- * update the schedule
- * contact another SO for details about a policy matter on the Policy Publish Schedule



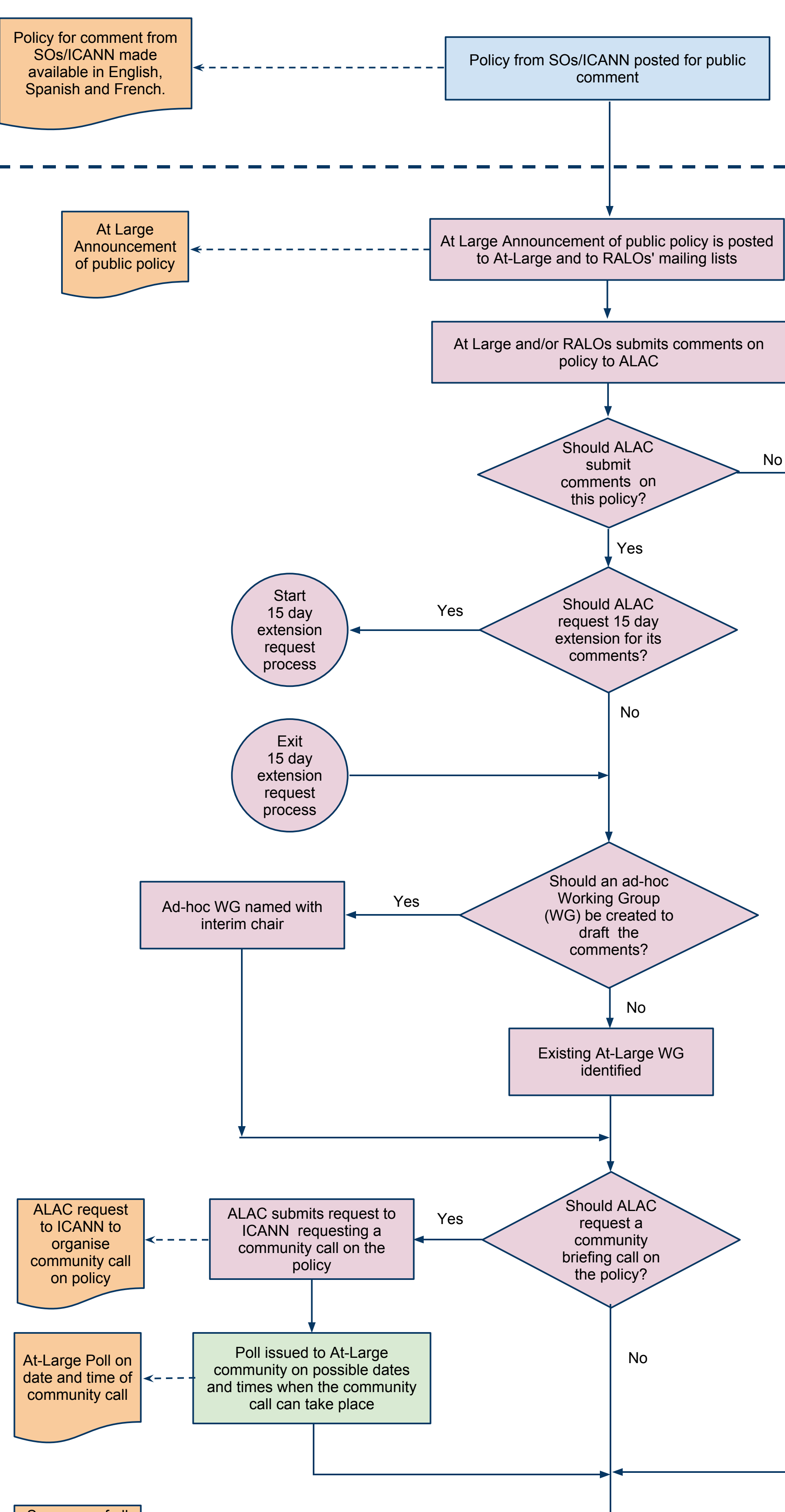
At-Large/ALAC activities before policy is published



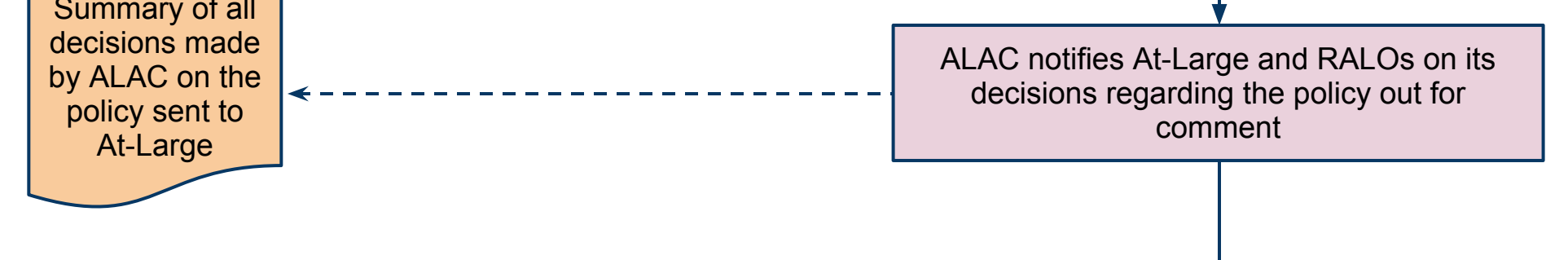


ALAC / At- Large Policy Advice Development Flowchart

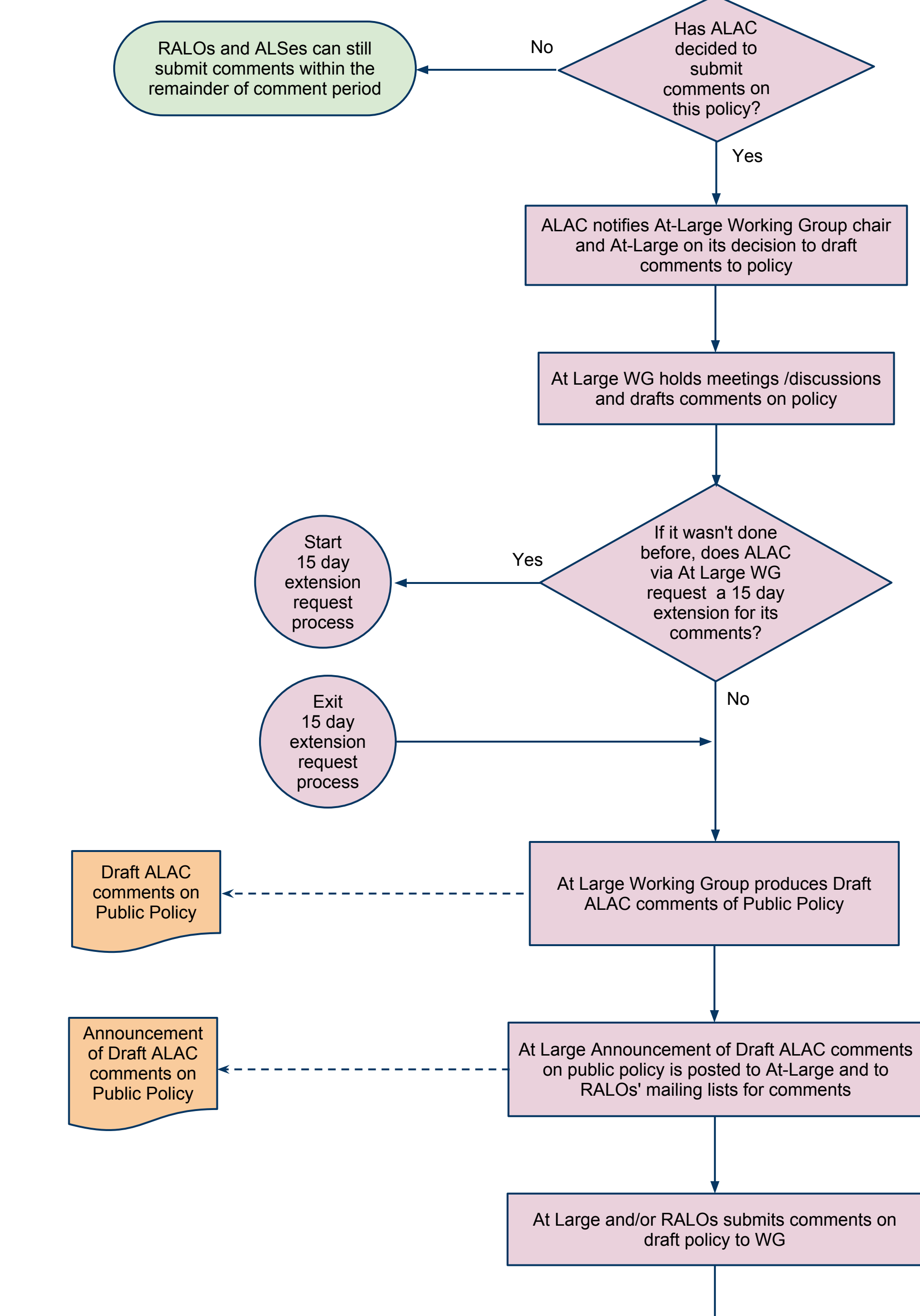
Before Policy is made available for comment



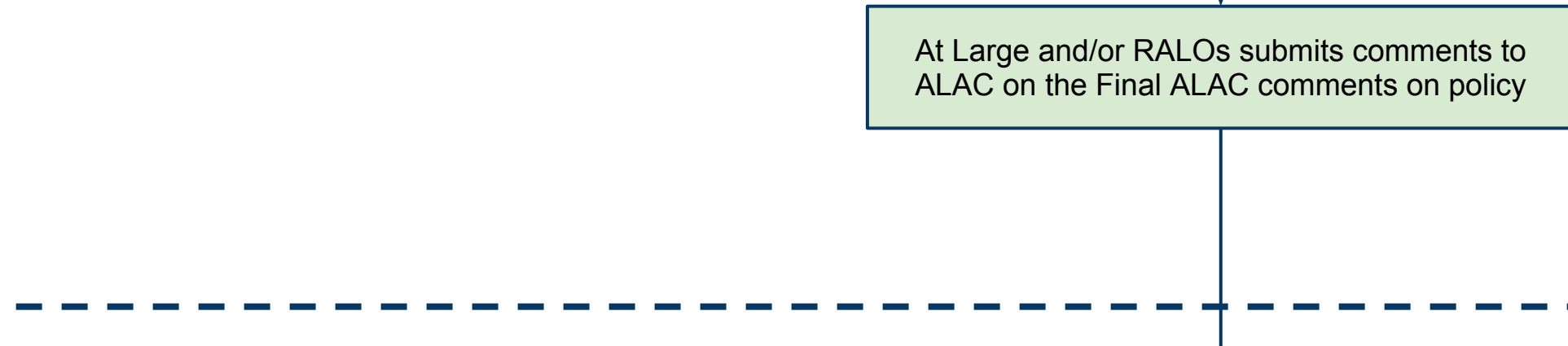
Policy is available for comment



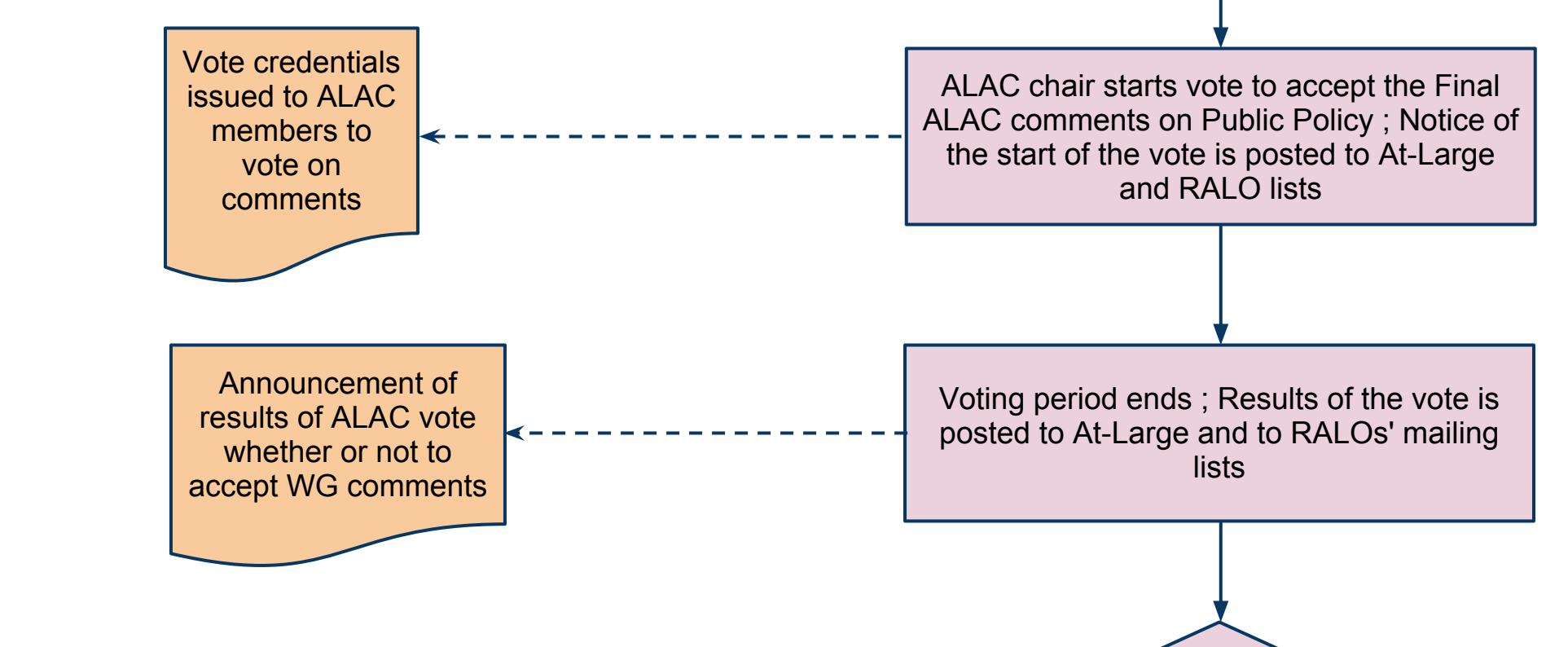
At most 10 days after policy is available for comment



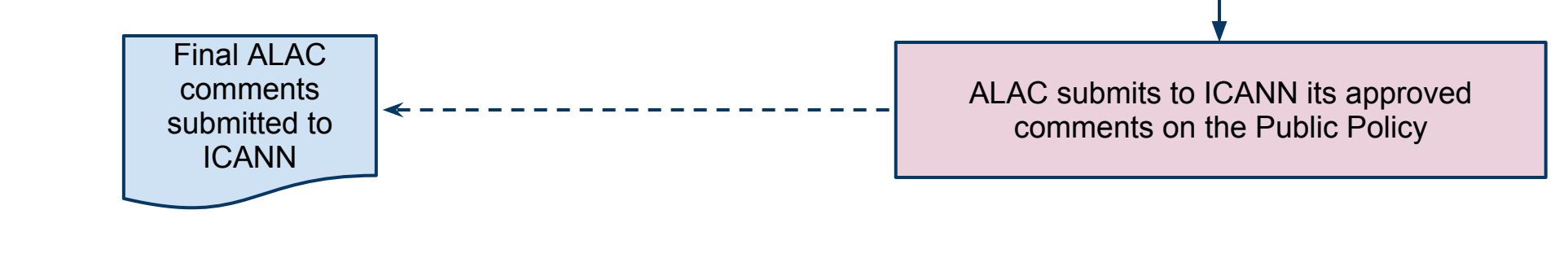
At most 21 days or 36 days (if 15 day extension is granted) after policy is available for comment



At most 23 days or 38 days (if 15 day extension is granted) after policy is available for comment

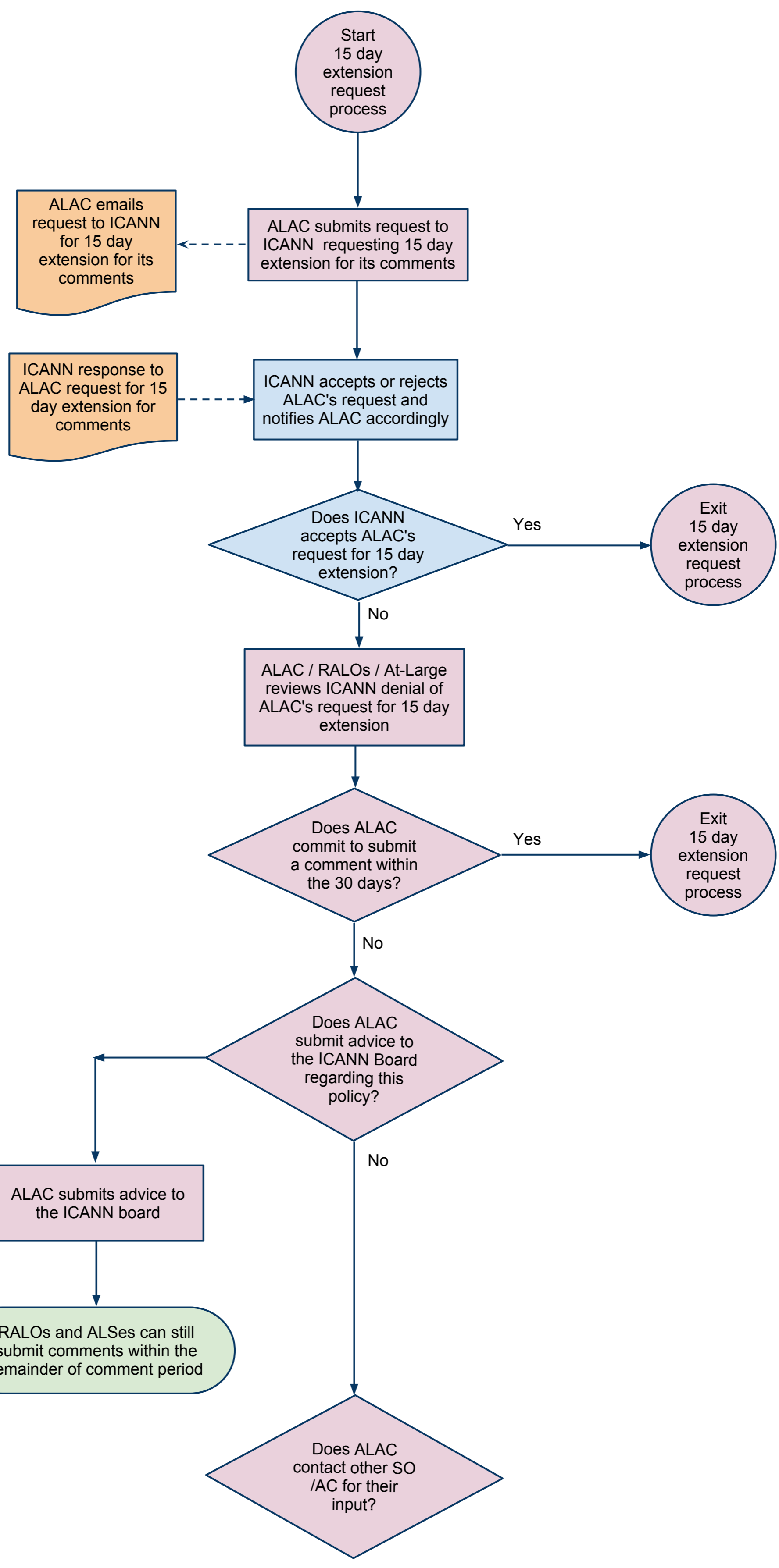


At most 29 days or 44 days (if 15 day extension is granted) after policy is available for comment





How ALAC may request public comment period be extended to 45 days





Overview of WT D's work

WT D has looked at

- Rec 12.1.1 "Outreach related to Consumer representatives and At-Large"
- Rec. 12.2.1 "Outreach related to Consumer representatives and the GNSO"

and have started to create a consolidated consumer-outreach document and outline of related materials needed for Consumer and At-Large outreach.

*At-Large Improvements
Work Team D -
Implementing
Recommendations 8,12,13
Recommendations
12.1.1 and 12.2.1*





One World

One Internet

Questions?



12/2/2010