



CELEBRATING DIVERSITY

An Introduction to the At-Large Community at APIGA 2024

Justine Chew

Vice-Chair & Member of the
At-Large Advisory Committee
(ALAC)

Amrita Choudhury

Chair of the Asian, Australasian and Pacific
Islands Regional At-Large Organization
(APRALO)

9 July 2024

In a not-so-distant galaxy called

APIGA 2024

.... we were asked the 5 eternal questions.

WHO

WHAT

WHY

HOW

&

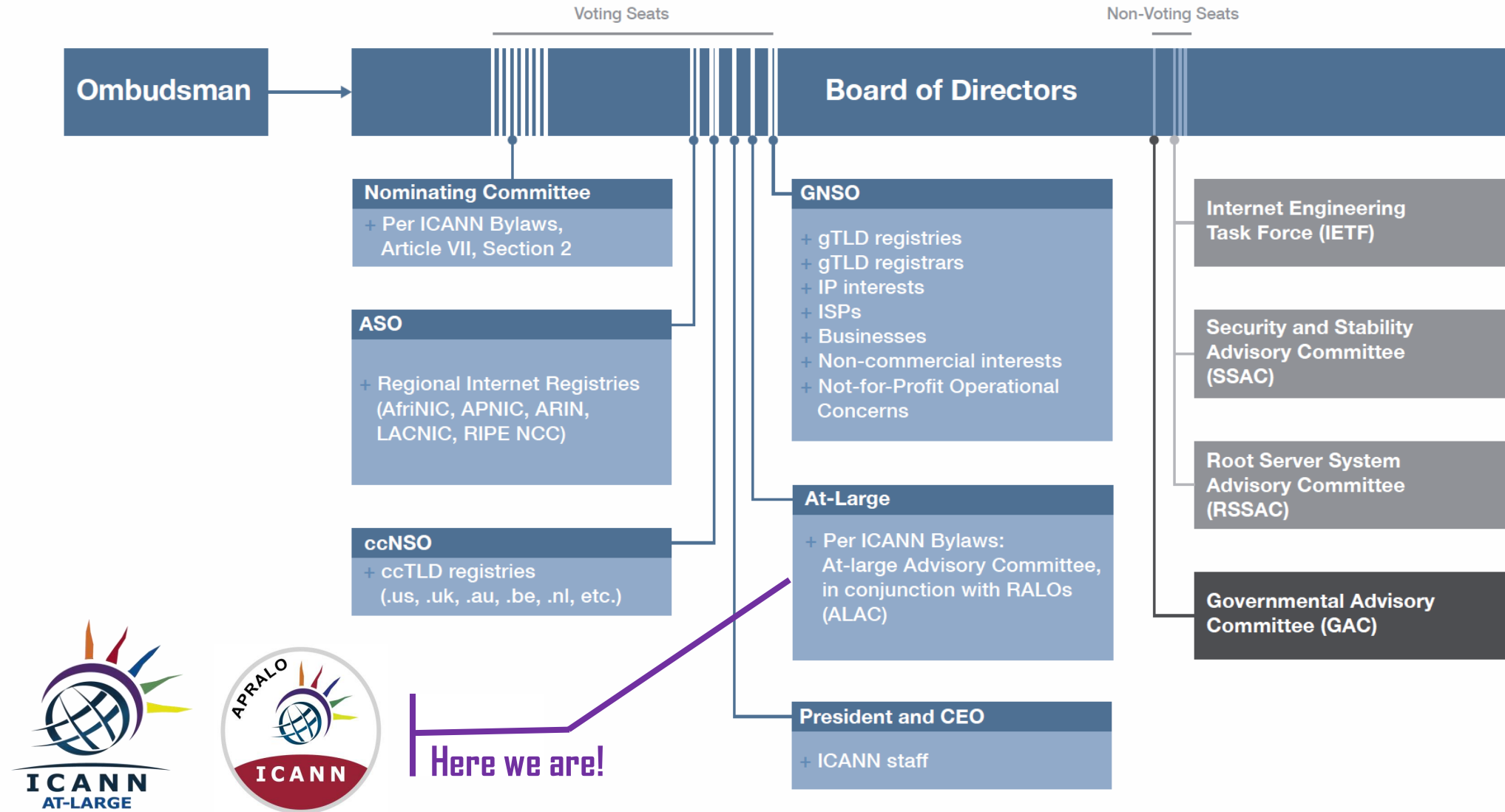
WHEN



WHO are the At-Large, APRALO and ALAC?

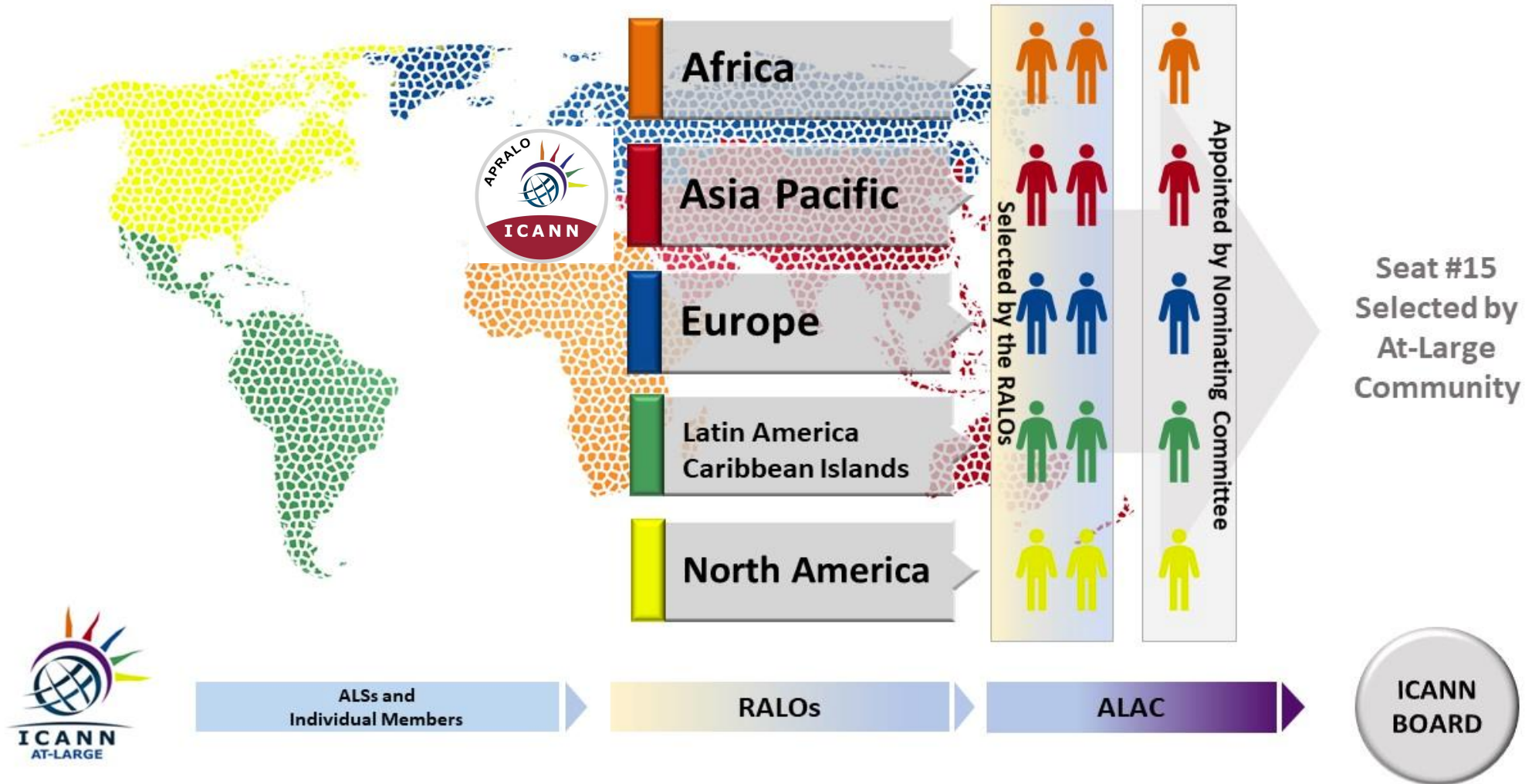


The At-Large Community, APRALO and ALAC



The At-Large Community, APRALO and ALAC

The At-Large Community



APRALO - The Asian, Australasian & Pacific Islands Regional At-Large Organisation



**A community comprising At-Large Structures (ALSes) and Individual Members (IMs)
as well as non-member participants**

The ALAC - At-Large Advisory Committee



The ALAC for the 2023-2024 Term

15-person Advisory Committee

- Advocates for end-user interests
- Manages At-Large Community organization building
- Advises on ICANN activities - Internet policies developed by ICANN's Supporting Organizations
- Helps safeguard ICANN's accountability mechanisms
- Selects one ICANN director

WHAT do the At-Large, APRALO and ALAC do?



Represent the Internet individual end user interests

Q. Who is the Internet individual end user?

A. You, me and anyone who uses the Internet.

Q. What's the distinction?

A. The individual end user uses the Internet for personal activities – email, browsing, streaming, shopping, banking, elearning etc. etc. etc.

Q. What about domain name registrants?

A. Only where their interests do not diverge significantly.

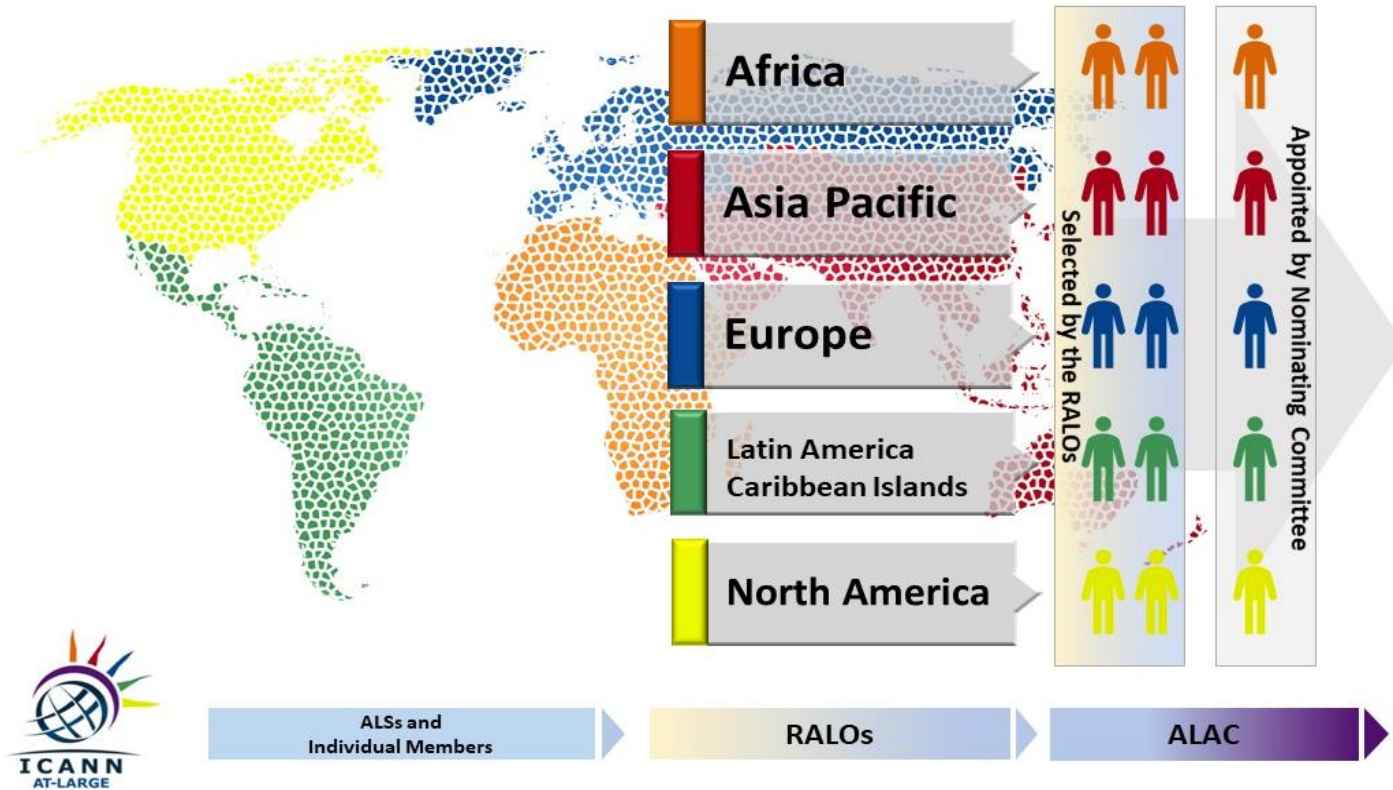


WHY do the At-Large, APRALO and ALAC do what they do?



ALAC Mandate given per the ICANN Bylaws

In accordance with ICANN's Bylaw, the ALAC has the duty to understand, represent, and advocate for the best interest of Internet end users worldwide.



**But, remember ...
... the ALAC is only 15 persons.**

**Hence, reliance on a bottom-up,
organization-building approach
comprising members (ALSes and
IMs) organised by Regions (RALOs)**

HOW do the At-Large, APRALO and ALAC do what they do?



Key Activities within At-Large carried up through to ALAC



Provide Advice to ICANN
Board



Participate in Policy
Development Processes



Conduct Capacity Building
and Outreach Initiatives

Key At-Large Working Groups

Many At-Large working groups are dedicated to ICANN policy discussions and advice development activities. Many others tackle various aspects of organization building, such as advancing accessibility and inclusion at ICANN, testing communication and collaboration tools, planning outreach and engagement projects, developing capacity building programs for newcomers, and fulfilling operational needs of the Community. **Almost all of our working groups are open to everyone regardless of membership status in At-Large.**

At-Large Consolidated Policy Working Group (CPWG)

Sponsored by ALAC

Co-chaired by [Hadia El Miniawi](#) and [Olivier-Crepin Leblond](#), the CPWG merges together the At-Large Registration Issues Working Group, At-Large New gTLDs Working Group and At-Large ICANN Evolution Working Group. The focus of CPWG is to drive policy comments and advice within the At-Large community, and create best practices for identifying Internet end user issues within ICANN.

At-Large Operations, Finance and Budget Working Group (OFB-WG)

Sponsored by ALAC

The At-Large Operations, Finance and Budget Working Group (OFBWG) is an At-Large Working Group within the Operations section of the At-Large Organization, tasked with preparing statements and requests related to ICANN finance and budget, strategy, and operational initiatives.

HOW can you participate?



Join the APRALO Community

Provide a **forum for promoting Asia Pacific Internet users' participation and involvement** in ICANN in an open, accountable and transparent manner

Promote, **understand & advocate for individual Internet users** and to provide a forum for **outreach, co-ordination and exchange of information** and knowledge

Act as an **interface** between individual Internet users and ICANN

Promote skills development and information exchange related to the Internet amongst Members

Bridge the digital divide and encourage users in developing countries to participate in APRALO

Select two individuals as representatives of the Members of APRALO to ALAC



APRALO Policy Forum



APRALO Monthly Calls



Outreach & Engagement



APRALO Newsletter



Continuous Improvement

Benefits of APRALO Membership/Participation



Image Credit: Shutterstock



shutterstock.com · 1195713220

Immerse in Policies being discussed @ICANN

Understand Issues of Importance

Offer Perspectives of different Stakeholders

Gain/offer Best Practices & Expertise

Acquire new skills

Engage in other Internet Governance and multistakeholder Communities



WHEN can you start participating in the
APRALO Community?



[Image by storyset on Freepik](#)

It's entirely up to you.

Are you ready to:

- **See what you can offer?**
- **Contribute to the work that we do?**

Join and grow with us.

We look forward to hearing from you.

Useful Links

[At Large Page](#)

[ALAC Page](#)

[At-Large Consolidated Policy WG Page](#)

[At-Large Operational, Finance & Budget WG Page](#)

[APRALD Page](#)

[APRALD Policy Forum Wiki Space](#)

[How to Join](#)

[Join APRALD Community WhatsApp Group](#)
