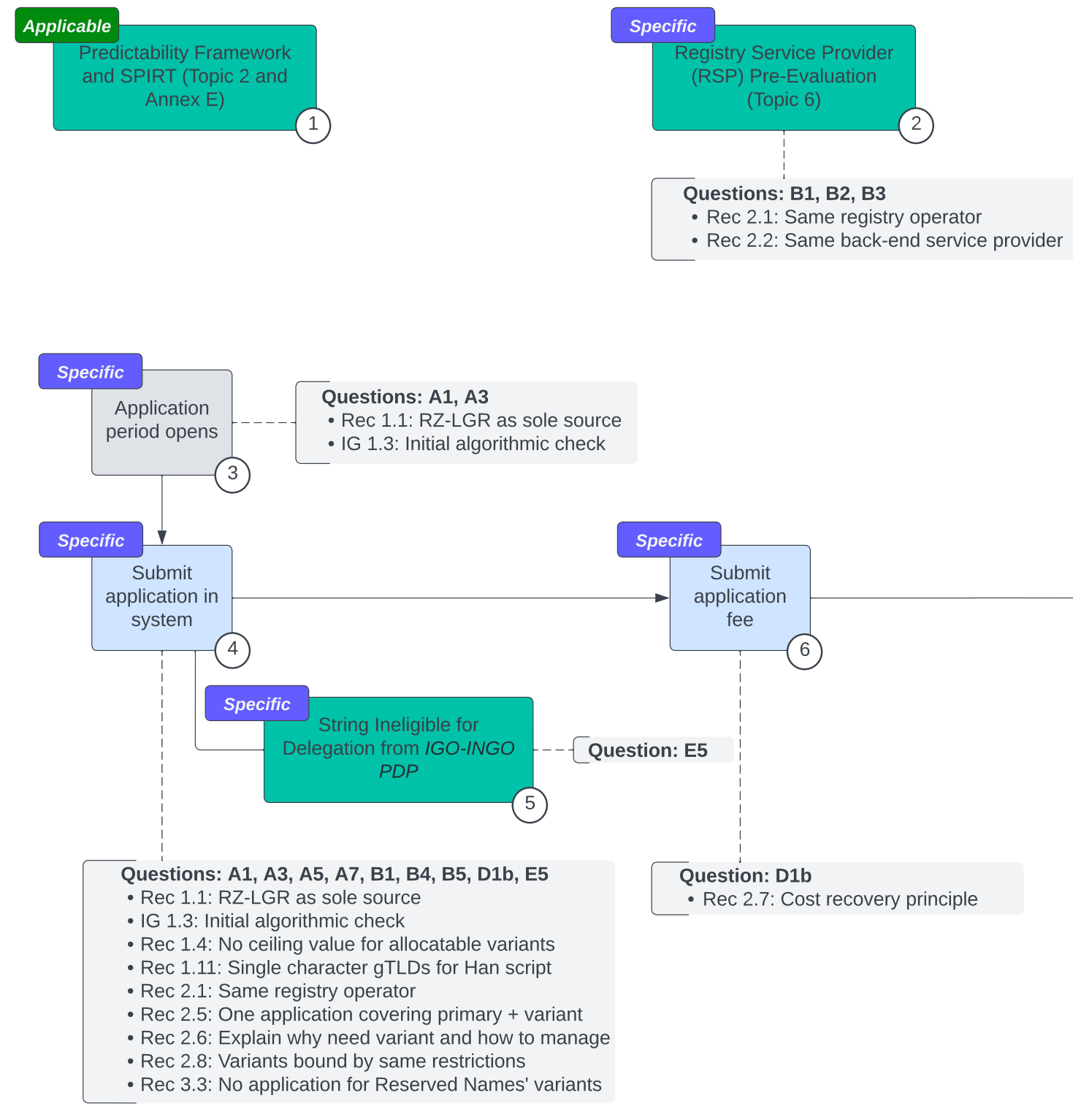


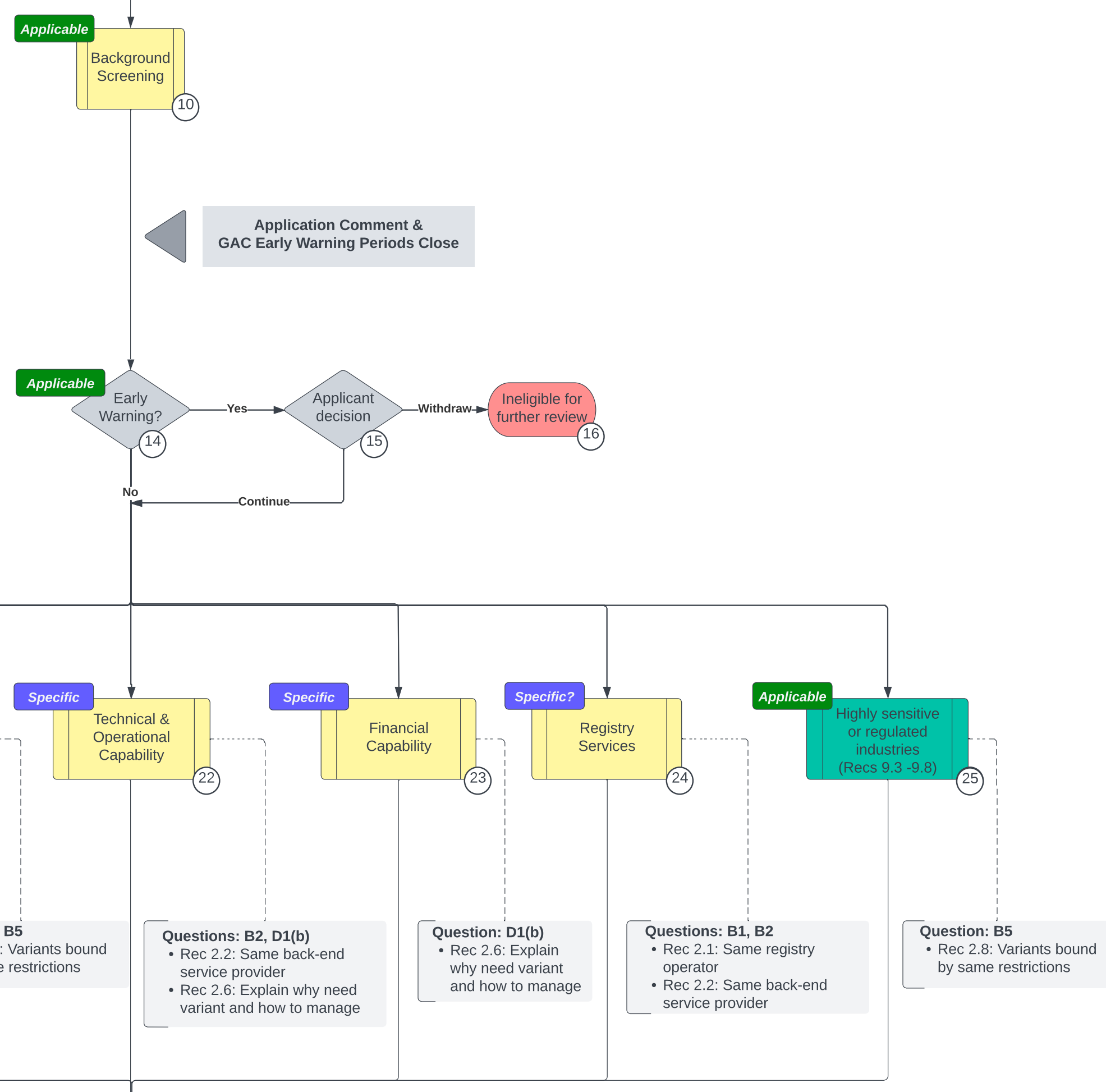
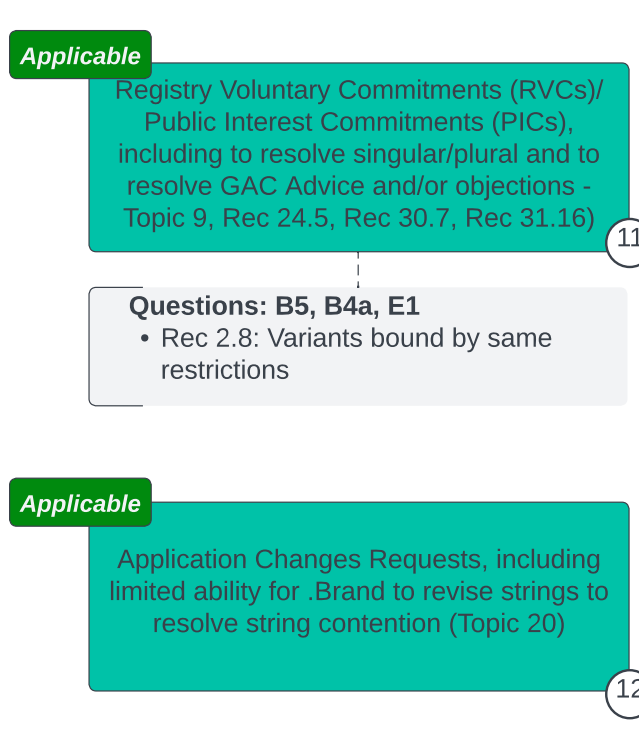
"Pre-Program" Processes:

Processes that happen before the Program starts



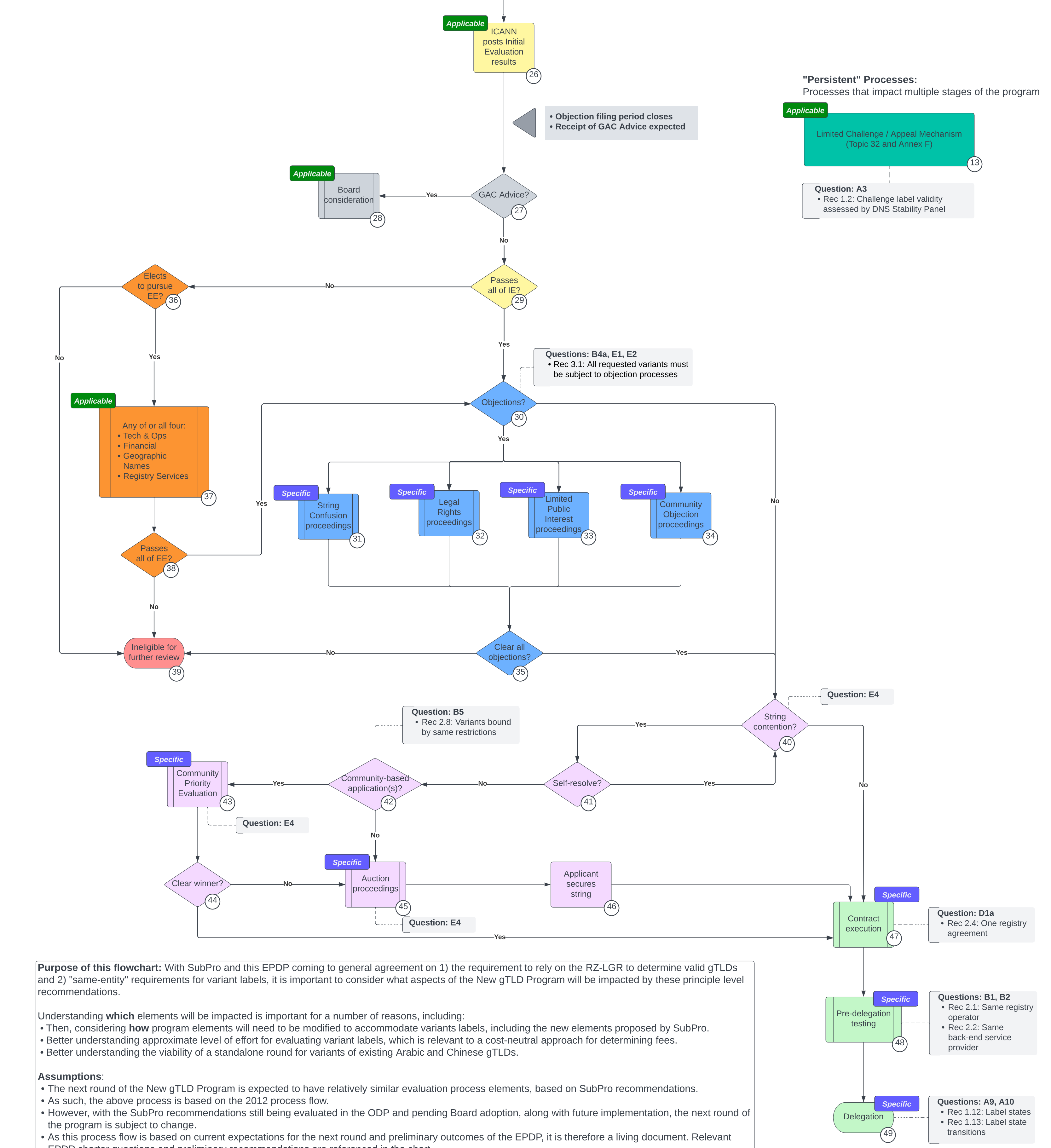
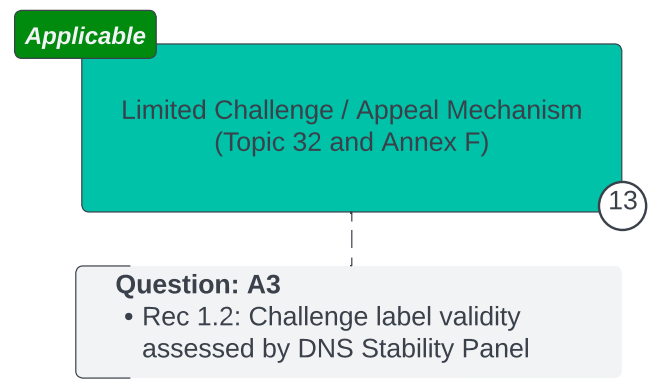
"Persistent" Processes:

Processes that impact multiple stages of the program



"Persistent" Processes:

Processes that impact multiple stages of the program



Purpose of this flowchart: With SubPro and this EPDP coming to general agreement on 1) the requirement to rely on the RZ-LGR to determine valid gTLDs and 2) "same-entity" requirements for variant labels, it is important to consider what aspects of the New gTLD Program will be impacted by these principle level recommendations.

- Understanding **which** elements will be impacted is important for a number of reasons, including:
 - Then, considering **how** program elements will need to be modified to accommodate variant labels, including the new elements proposed by SubPro.
 - Better understanding approximate level of effort for evaluating variant labels, which is relevant to a cost-neutral approach for determining fees.
 - Better understanding the viability of a standalone round for variants of existing Arabic and Chinese gTLDs.

Assumptions:

- The next round of the New gTLD Program is expected to have relatively similar evaluation process elements, based on SubPro recommendations.
- As such, the above process is based on the 2012 process flow.
- However, with the SubPro recommendations still being evaluated in the ODP and pending Board adoption, along with future implementation, the next round of the program is subject to change.
- As this process flow is based on current expectations for the next round and preliminary outcomes of the EPDP, it is therefore a living document. Relevant EPDP charter questions and preliminary recommendations are referenced in the chart.

Key:

Some elements of the program will require "Specific" consideration and modification of process to accommodate variant labels. For example, when submitting an application that also requests allocatable variant labels, there will presumably be additional application questions/responses and additional fees paid (based on preliminary outcomes). The process will need to be specifically designed to accommodate these changes. Evidently the EPDP Team likely has developed or may develop recommendations and/or implementation guidance to cater to the "specific" changes.

However, some elements of the program will be largely unimpacted as a result of variant labels, but variant labels still need go through those stages or steps just like a regular gTLD application. For instance, in performing a completeness check, the variant label related questions will also be validated, but there is no **specific** change to the process envisioned. The EPDP Team likely does not need to develop recommendations or implementation guidance for those elements.