

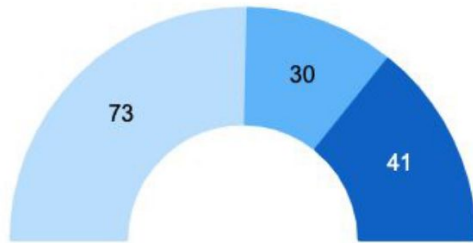
Update on EPDP on IDNs

ALAC Team

Current Status

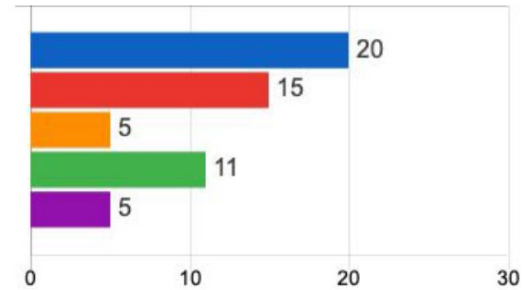
- As per the last report from the EPDP, it is 43% complete
- Projected end-date is Aug 2023

Tasks by Status



● Not_Started ● Complete ● In_Progress

Participant Summary



● Member ● Participant_Count
● Observer_Email_Only ● Staff_Assigned
● Staff_Not_Assigned

Group 1: RZ-LGR as sole source of variants

- Completion status: 87%
- Draft outcome language reviewed for A1, A3, A5, A6, A7 (Part 1), A9, A10
- No recommendations needed for A2, A4
- Deliberation not started for A8 (catch-all question)
- Draft indicative recommendations:
 - RZ-LGR be **the sole source** to calculate the variant labels and disposition values for existing delegated gTLDs
 - **No ceiling value** is necessary to keep the number of activated top-level variant labels conservative
 - Best practice guidelines be developed for **managing** a gTLD and its variant labels by registries and registrars
 - Generation Panels (GPs) and the Integration Panel must make best effort to retain **full backward compatibility**
 - **Single character gTLDs** may only be allowed for limited script and language where a character is an ideograph

Group 2: “Same entity” at the Top Level

- Completion status: 65%
- Draft Recommendation Samples:
 - Registry operator of an existing gTLD must use **the same back-end registry service provider** for operating all delegated variant labels of that gTLD
 - Each gTLD and its variant labels be subject to **one Registry Agreement** with the same registry operator
 - **One application** covers the primary new gTLD and allocatable variant label(s) the applicant wishes to activate
 - Fee structure associated with applications that include variants must adhere to the **principle of cost recovery**

Group 3: Variants' Impact on New gTLD Process

- Completion status: 33%
- Draft recommendation samples:
 - All allocatable variants that applicants request to activate must be subject to **objection process**
 - The Reserved Names list be **maintained “as is”**; variants of Reserved Names **be blocked** from application
 - Emergency transition of a gTLD to an EBERO provider **must trigger an emergency transition** of all allocated and delegated variants of that gTLD to the same EBERO provider
 - **Same data escrow provider** be contracted for the primary gTLD and its allocated and delegated variants

Upcoming work

- Group 4: “Same entity” principle at the second level
- Group 5: Domain name life cycle
- Group 6: Registration Dispute Resolution and Trademark Protection
- Group 7: IDN Implementation Guideline

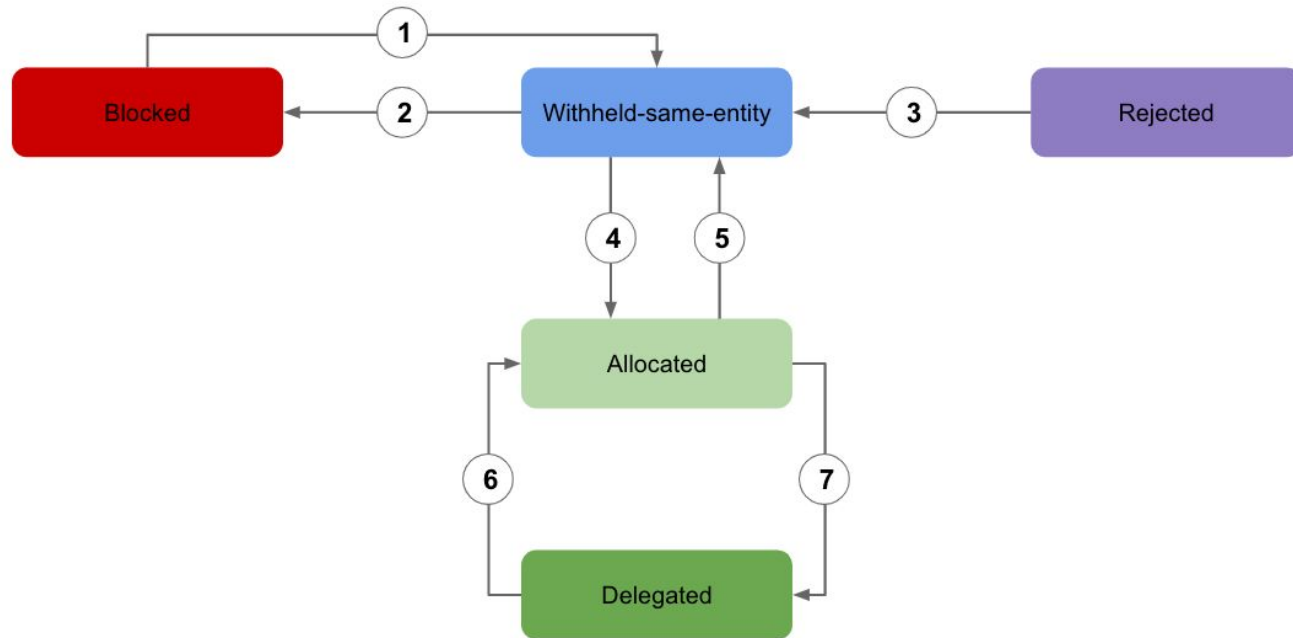
A7 and A10

A7: Single-character TLDs

- The EPDP Team affirms the SubPro's recommendation that single character gTLDs may be allowed for ideographic scripts and languages.
- Currently, the Han script is the only ideographic script included in the RZ-LGR, and Chinese, Japanese, and Korean are the only languages incorporating the Han script. Therefore, the Chinese language, the Kanji portion of the Japanese language, and the Hanja portion of the Korean language which all use the Han script are appropriate for single-character gTLDs
- The EPDP Team agreed to seek input from the Chinese, Japanese, and Korean Generation Panels regarding developing a mechanism or criteria for identifying allowable characters for single-character TLDs in the Han script.

A10: Label States and State Transitions

- What is the procedure to change the label status for individual variant labels?



Thank you!

A10: