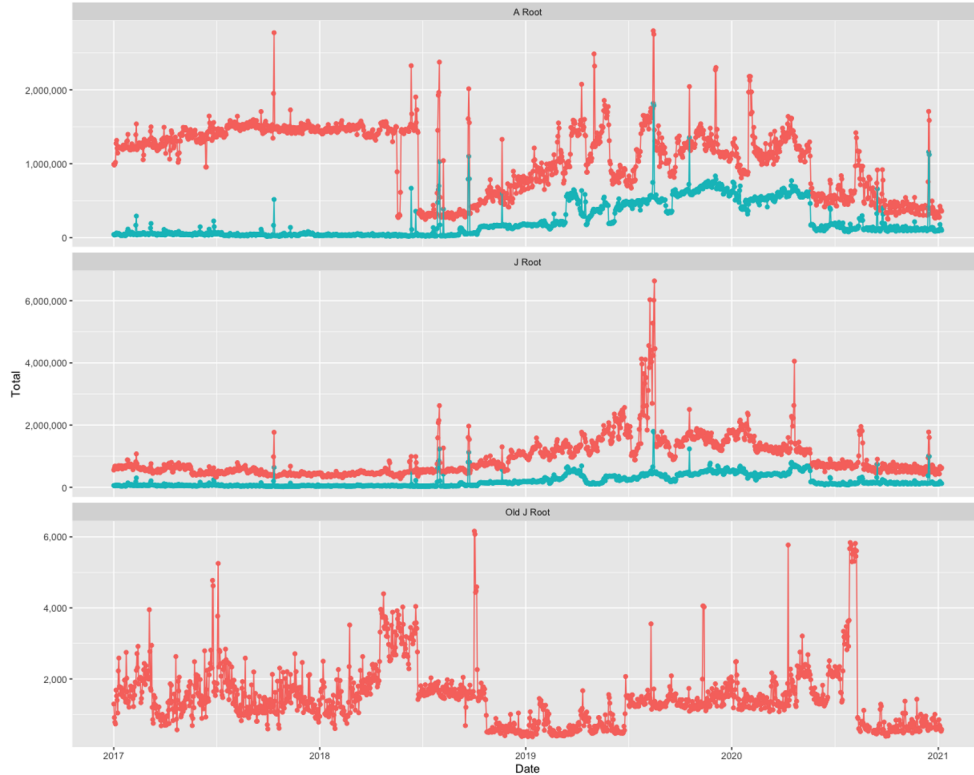


Name Collision Analysis

.MAIL

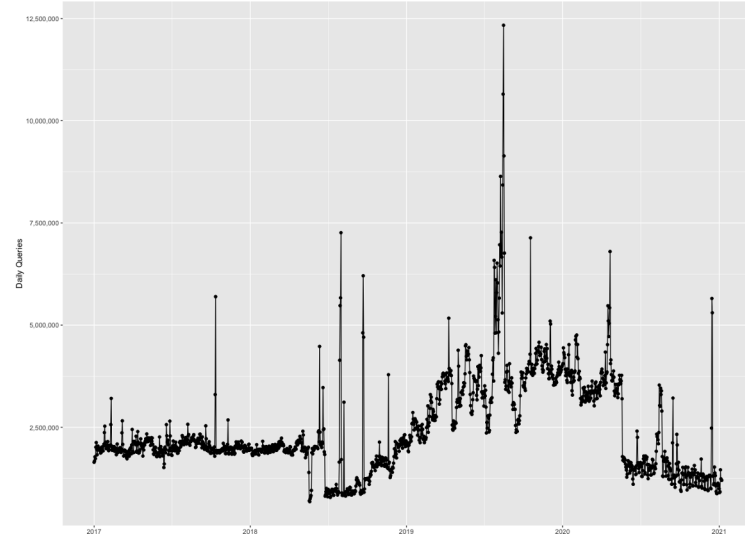
.MAIL Analysis :: Daily Query Volume

.MAIL Queries to A and J Root Servers per Day by IP Version



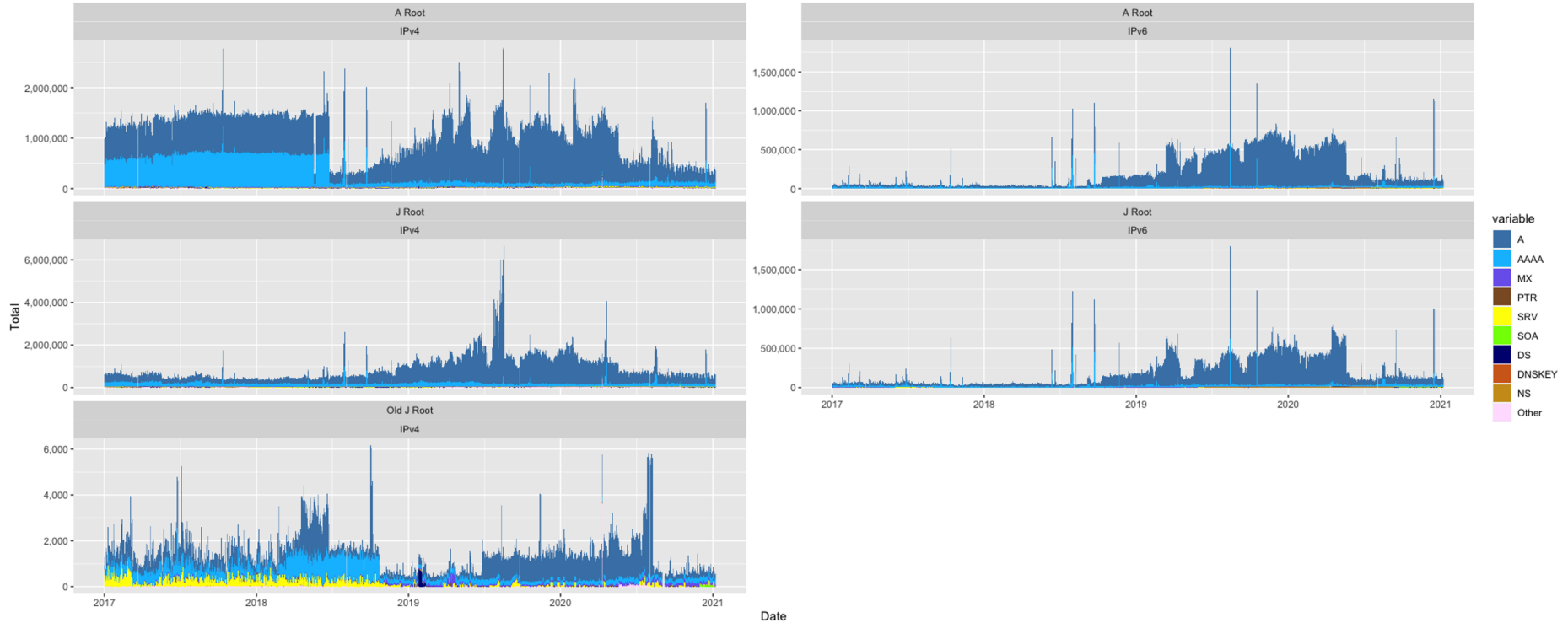
- Data from A, J, and Old J roots
 - In 1997, [j.root-servers.net](https://www.j.root-servers.net/) was added as the 10th root name server. It was initially co-located with A-root and used the IP address 198.41.10.10. In 2002, J-root was renumbered to 192.58.128.30.

Total Daily Queries to A and J for .MAIL

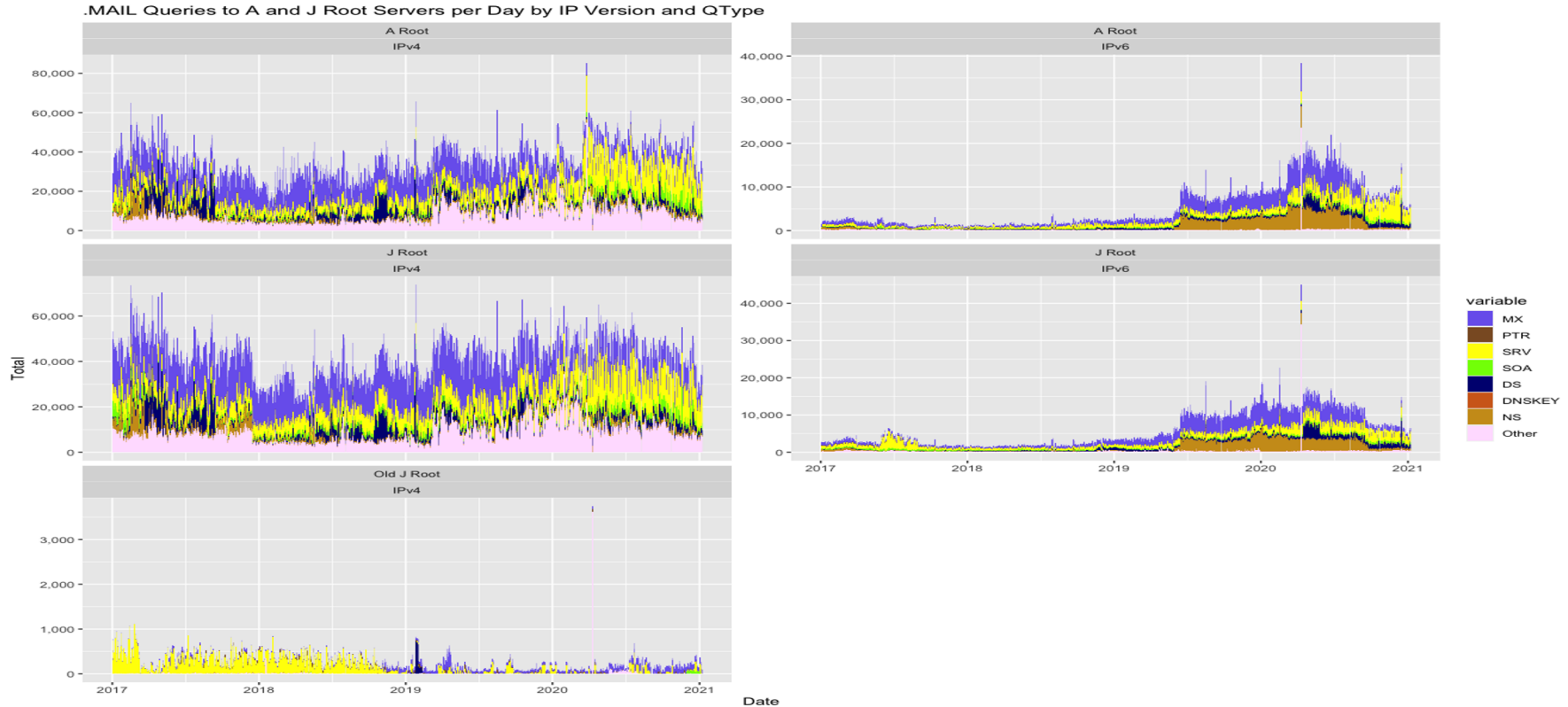


.MAIL Analysis :: Qtype Distribution

MAIL Queries to A and J Root Servers per Day by IP Version and QType

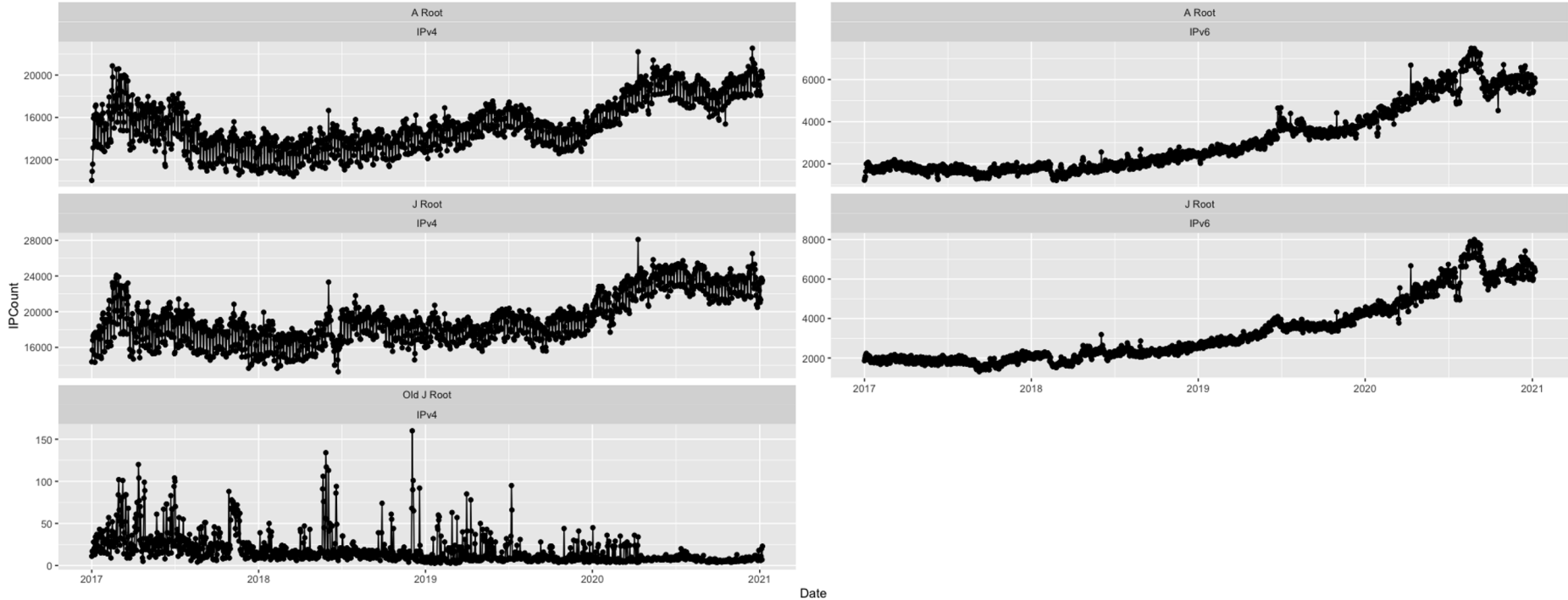


.MAIL Analysis :: Qtype Distribution



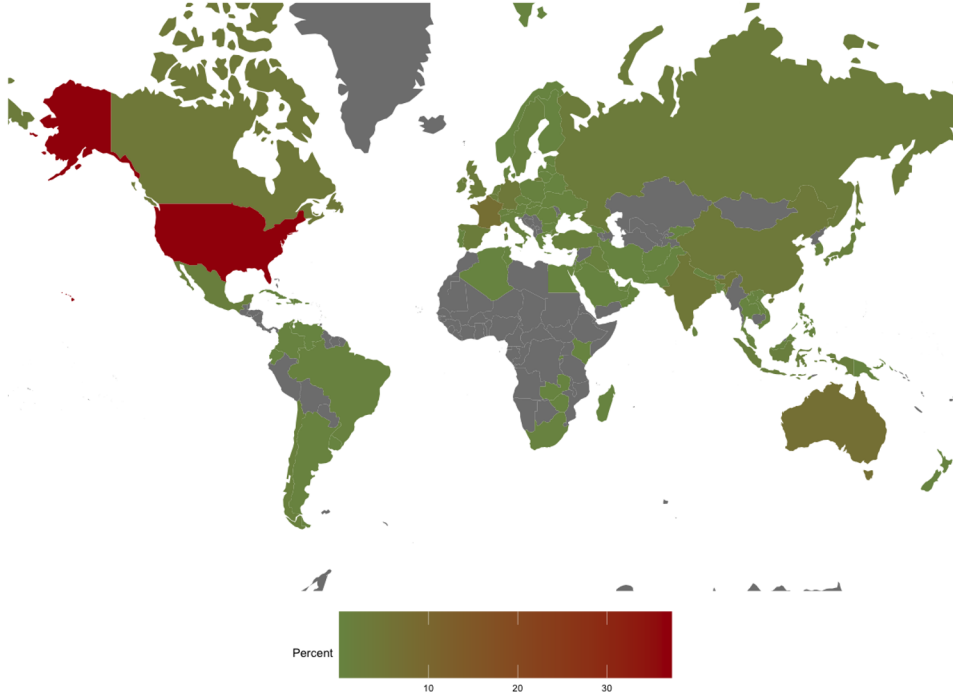
.MAIL Analysis :: Unique Daily Source IPs

Number of Distinct IPs per Day at A and J Root Servers

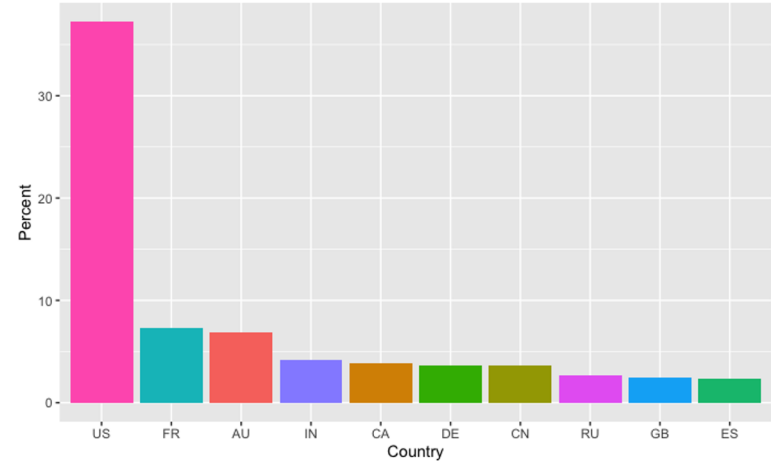


.MAIL Analysis :: Geographical Distribution

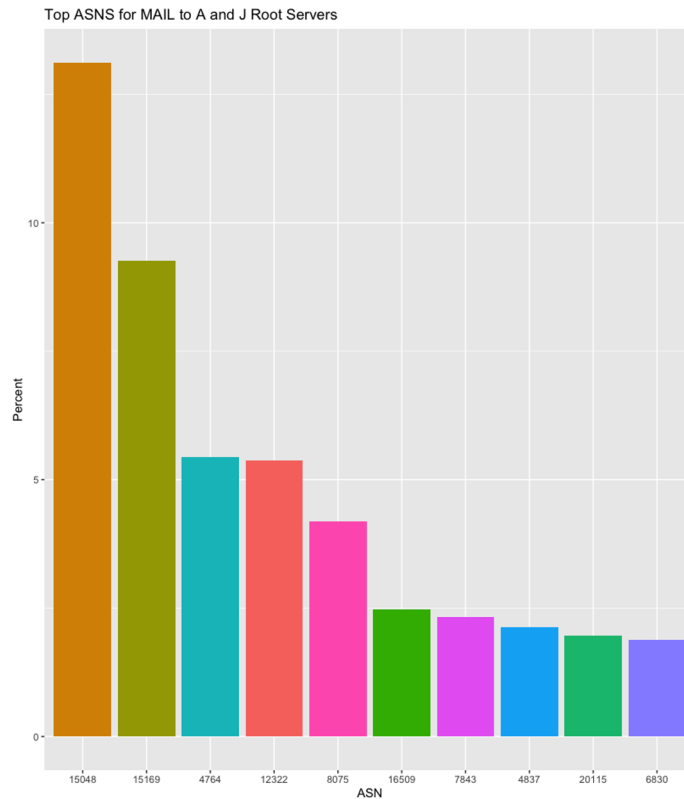
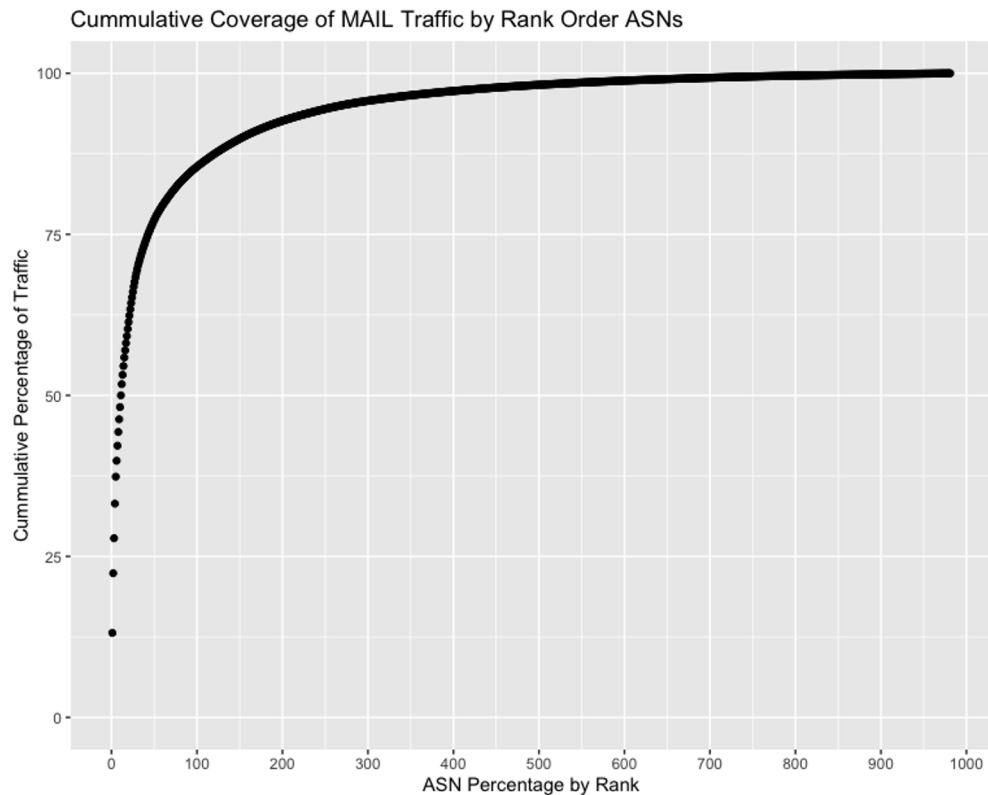
MAIL Global Distribution



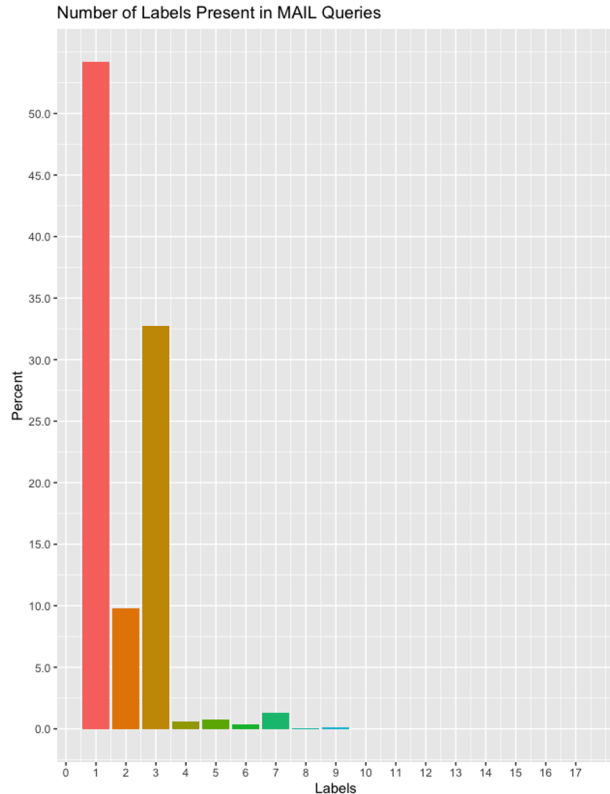
Top Countries for MAIL to A and J Root Servers



.MAIL Analysis :: ASN Distribution



.MAIL Analysis :: Label Analysis



	SLD	Percent
1:	g	8.2588799
2:	_	6.7988669
3:	yahoo	6.2023317
4:	antivirusufv	4.5026149
5:	www	4.0041403
6:	wpad	3.2823055
7:	columbus	3.1706254
8:	papercut	2.8818915
9:	smtp	2.8192417
10:	hapvida	2.6149488
11:	hot	2.4651340
12:	ns1	2.2254304
13:	ns2	2.1872957
14:	gmail	2.1791240
15:	proxyufv	2.0047941
16:	e	1.8604271
17:	click	1.8549793
18:	alico	1.7732621
19:	win	1.7269558
20:	mail	1.6016561
21:	google	1.5825888
22:	_dmarc	1.3782959
23:	aol	1.2993027
24:	local	1.1876226
25:	imap	1.0950098
26:	company	1.0759425
27:	yandex	1.0078448
28:	twc	0.9288516
29:	web	0.8879930
30:	primary	0.8471345
	SLD	Percent

	ThirdLabel	Percent
1:	wpad	19.8957231
2:	winhexbemig15	6.4311622
3:	winhexbemig16	6.3125283
4:	_ldap	3.6859604
5:	winhexbemig13	3.2862324
6:	inblrdmzftdp01	3.0225178
7:	winhexbeus105	2.9159740
8:	winhexbemig14	2.9076621
9:	winhexbeus103	2.2427082
10:	inblrprdbxpx01	2.0938492
11:	_dmarc	1.8112438
12:	inblrprdbxpx02	1.7039444
13:	isdcf01	1.6125132
14:	inblrepop01	1.4462747
15:	msoid	1.3027052
16:	winhexbeus101	1.2316760
17:	mail	1.1833157
18:	isdav	1.0813057
19:	winhexbeus106	1.0125434
20:	pop3	1.0012090
21:	plwawepo5	0.9989421
22:	ep	0.9656944
23:	imap	0.8772858
24:	adeca-sav2	0.7352274
25:	winhexbeus104	0.7261599
26:	mslma43	0.6770440
27:	smtp	0.6082817
28:	winhexfeus5	0.5999698
29:	oit-tanium-p01	0.5750340
30:	doc-pluto	0.5606770
	ThirdLabel	Percent

.MAIL Analysis :: 2017 vs 2021 SLD Ranking

2.6 MAIL, reverse order by volume (2017)

2020 MAIL List from A and J

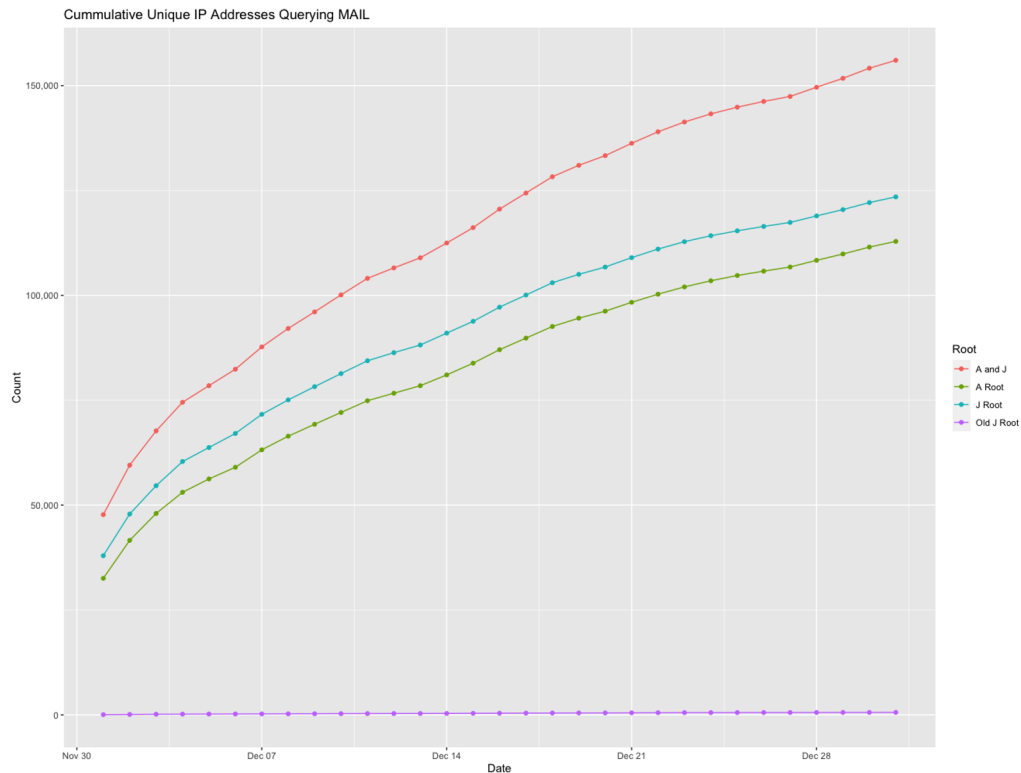
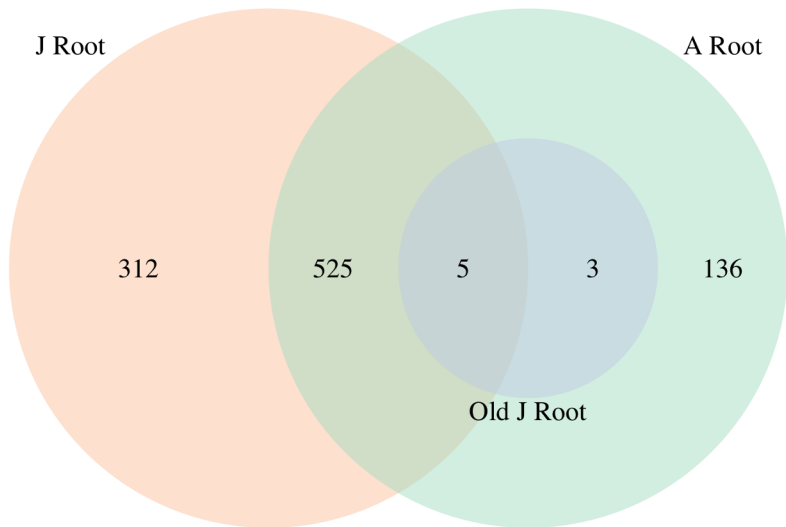
	SLD	Percent
1:	g	8.2588799
2:	_	6.7988669
3:	yahoo	6.2023317
4:	antivirusufv	4.5026149
5:	www	4.0041403
6:	wpad	3.2823055
7:	columbus	3.1706254
8:	papercut	2.8818915
9:	smtp	2.8192417
10:	hapvida	2.6149488
11:	hot	2.4651340
12:	ns1	2.2254304
13:	ns2	2.1872957
14:	gmail	2.1791240
15:	proxyufv	2.0047941
16:	e	1.8604271
17:	click	1.8549793
18:	alico	1.7732621
19:	win	1.7269558
20:	mail	1.6016561
21:	google	1.5825888
22:	_dmarc	1.3782959
23:	aol	1.2993027
24:	local	1.1876226
25:	imap	1.0950098
26:	company	1.0759425
27:	yandex	1.0078448
28:	twc	0.9288516
29:	web	0.8879930
30:	primary	0.8471345
	SLD	Percent

Rank	Requested string	Volume Observed	Average Daily Sources
1	.mail	8,496,910	10,941
2	system.mail	361,694	2,265
3	win.mail	357,709	1,417
4	alico.mail	350,051	796
5	al.mail	187,074	367
6	g.mail	173,779	1,054
7	yahoo.mail	145,612	1,094
8	com.mail	105,209	334
9	hot.mail	84,580	450
10	mail.mail	80,488	451
11	google.mail	55,151	263
12	company.mail	54,168	432
13	gmail.mail	53,229	238
14	navy.mail	50,687	193
15	army.mail	44,085	192
16	_tcp.mail	42,754	280
17	_sites.mail	41,395	261
18	infra.mail	38,370	61
19	net.mail	34,954	160
20	ct.mail	34,833	38
21	af.mail	34,639	133
22	aol.mail	34,228	211
23	www.mail	34,068	325
24	hotmail.mail	31,627	152
25	winus.mail	29,264	182
26	sw.mail	27,441	10
27	e.mail	26,351	218
28	receive.mail	24,005	124
29	maillocal.mail	20,768	63
30	smtp.mail	20,234	149

Data Sensitivity Analysis

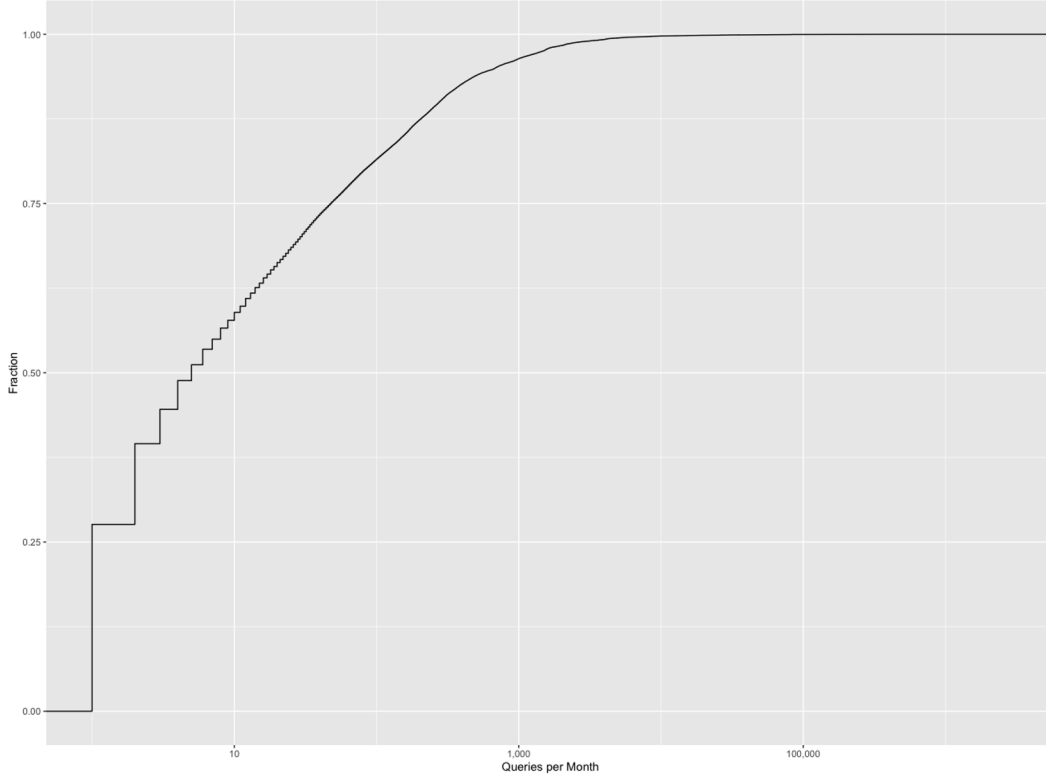
.MAIL Analysis :: Root ASN Overlap and IP growth

ASN Overlap for 12/31/2020

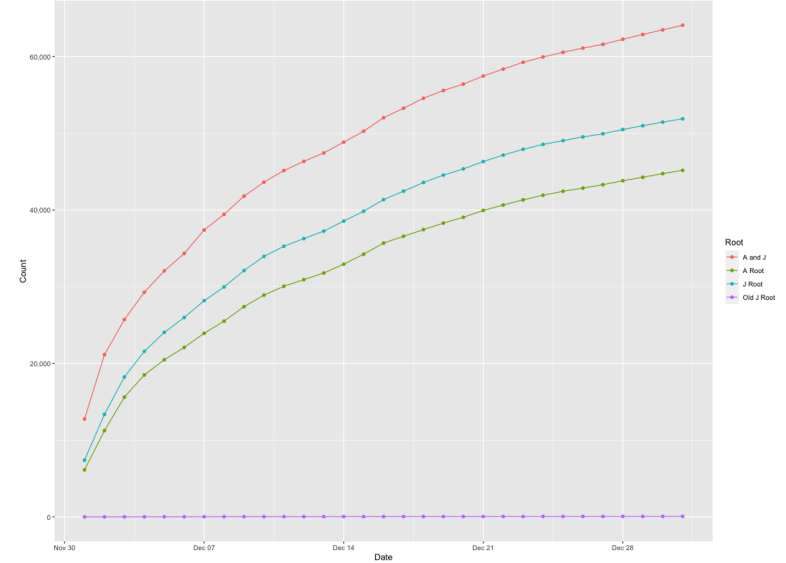


.MAIL Analysis :: IP Query Distribution

CDF of Number of Queries Sent by IP for MAIL

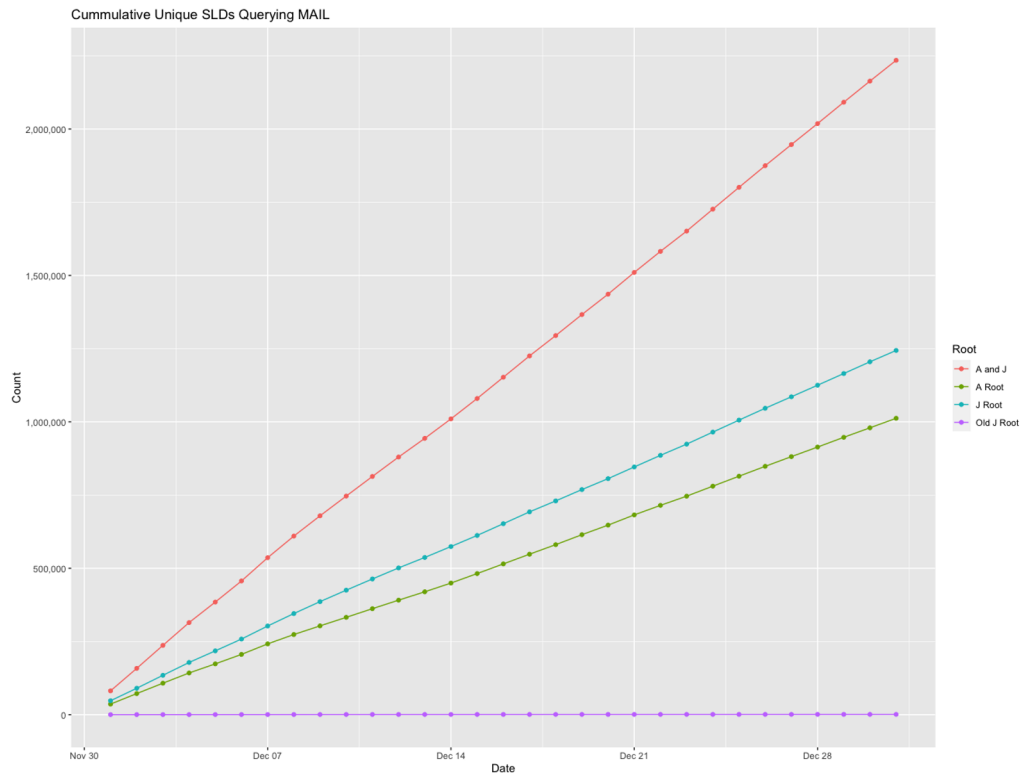
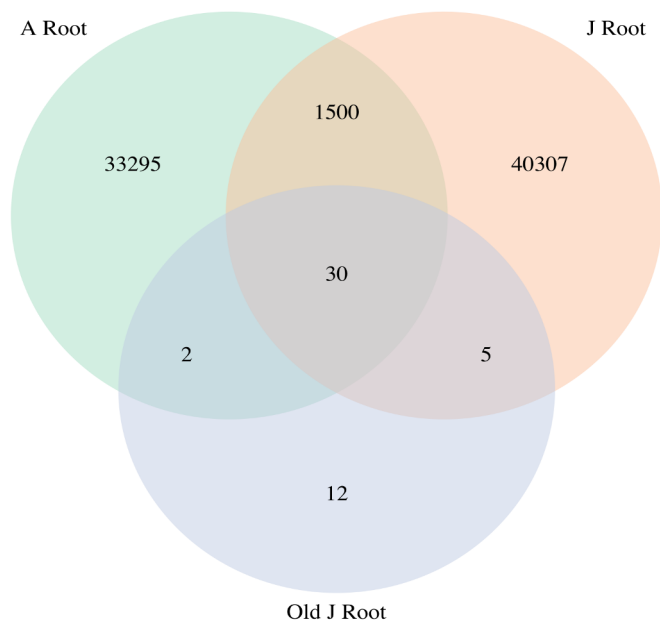


Cummulative Unique IP Addresses Querying MAIL (Minimum 10 Queries)



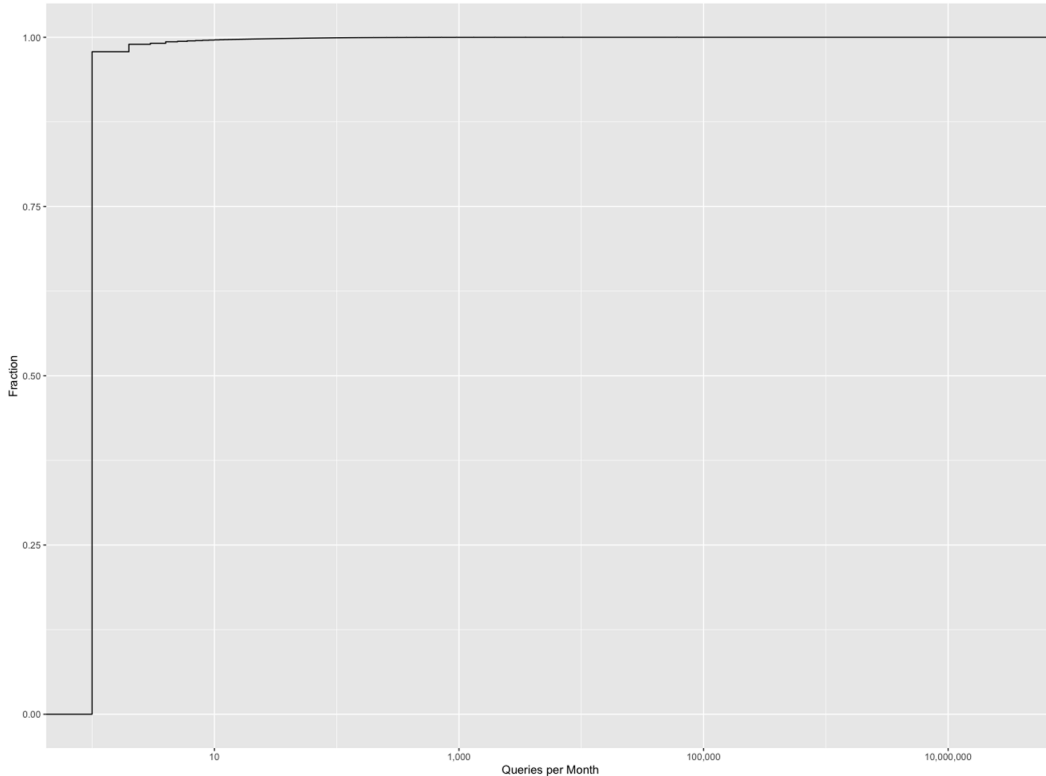
.MAIL Analysis :: SLD Overlap Analysis

SLD Overlap for 12/31/2020



.MAIL Analysis :: SLD Overlap Analysis

CDF of Number of Queries per SLD for MAIL



Cummulative Unique SLDs for MAIL (Minimum 2 Queries)

