

Name Collision Analysis

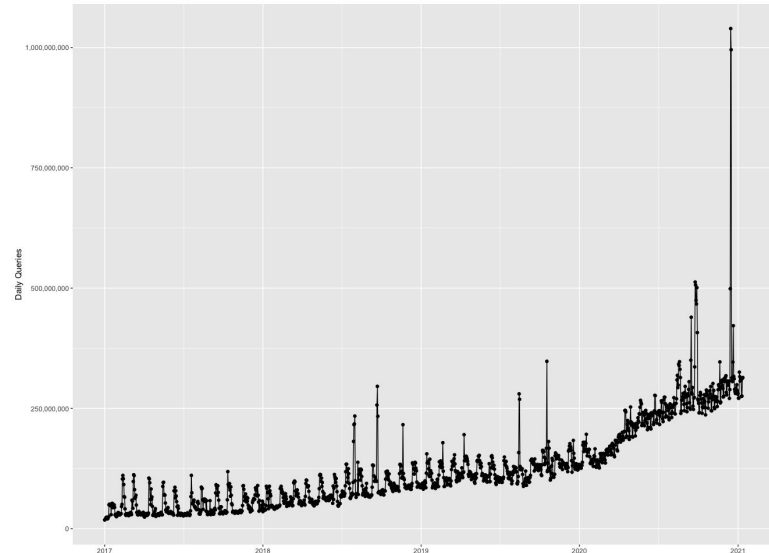
.INTERNAL

.INTERNAL Analysis :: Daily Query Volume

.INTERNAL Queries to A and J Root Servers per Day by IP Version

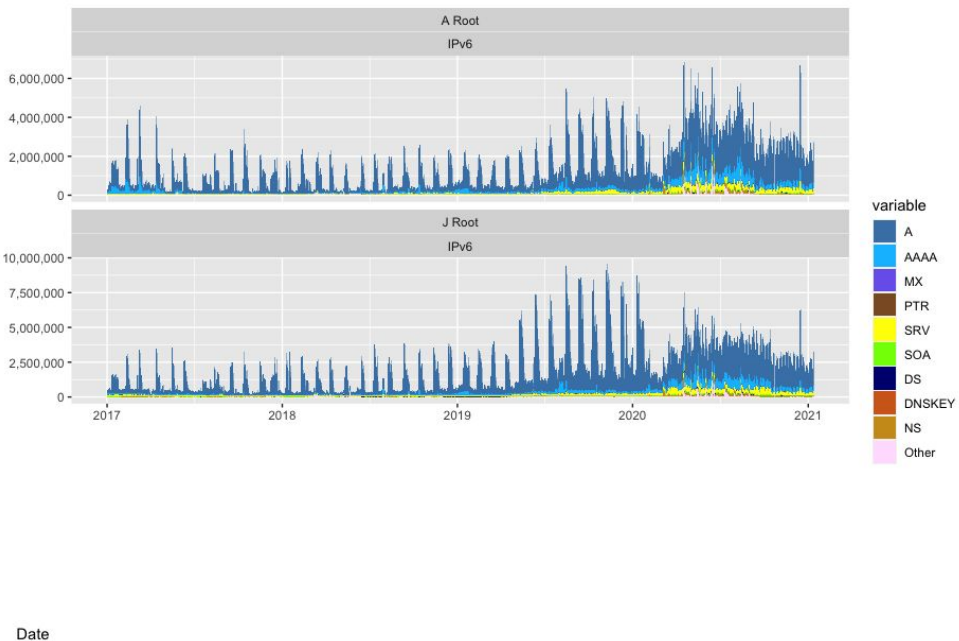
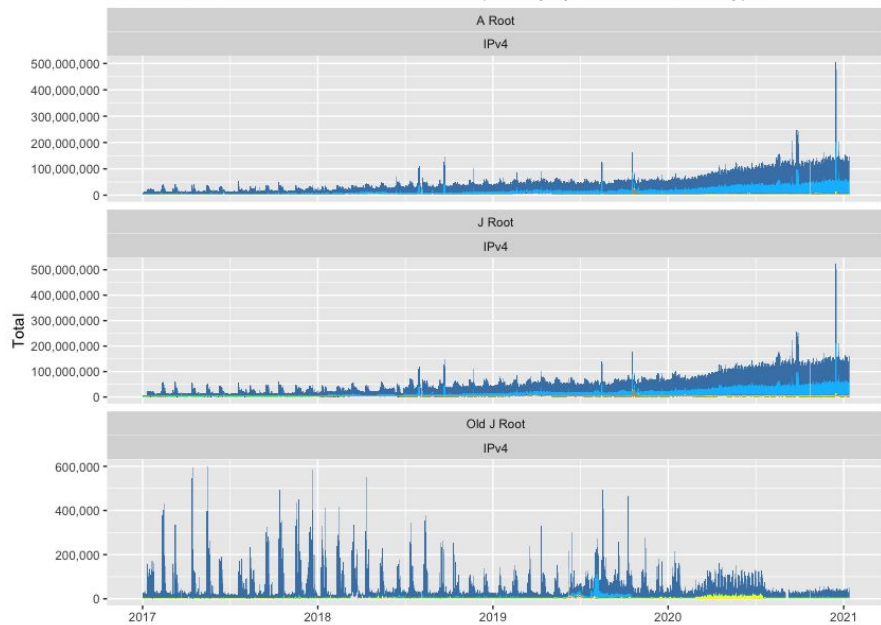


Total Daily Queries to A and J for .INTERNAL

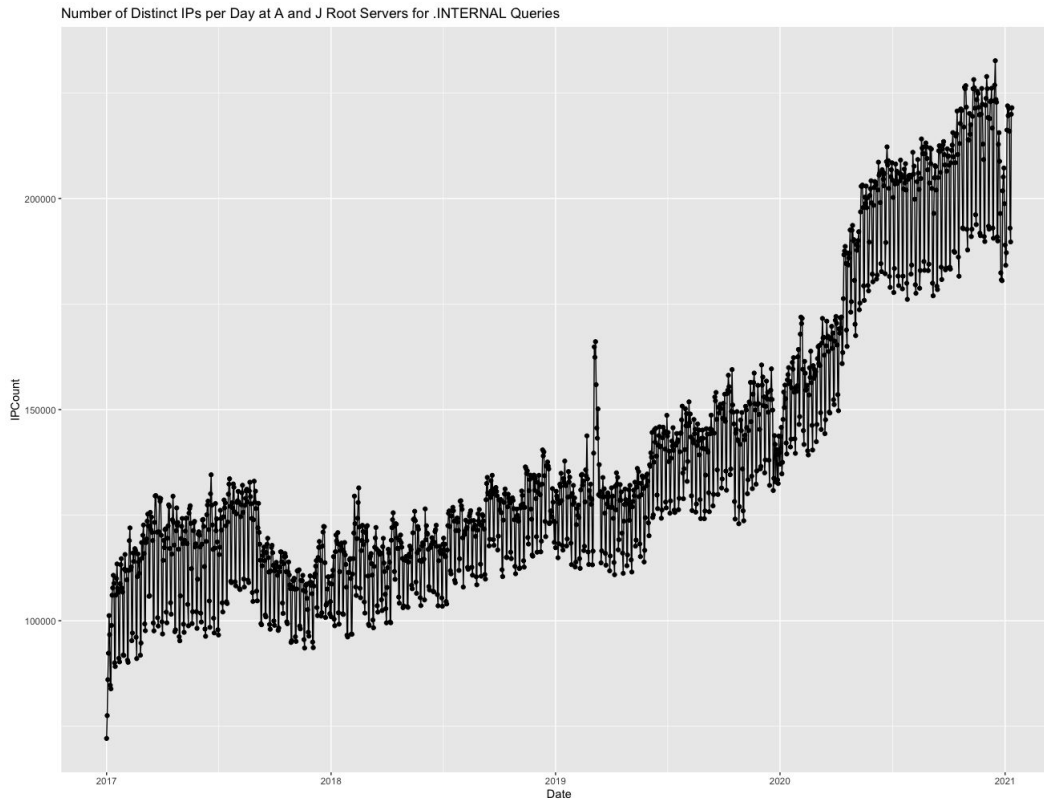


.INTERNAL Analysis :: Qtype Distribution

.INTERNAL Queries to A and J Root Servers per Day by IP Version and QType

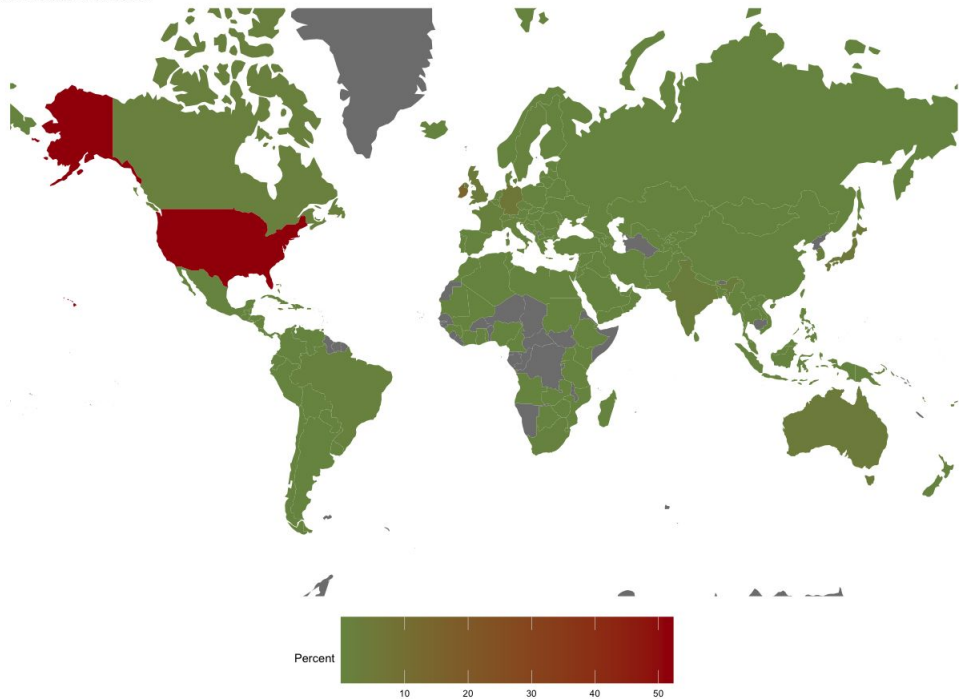


.INTERNAL Analysis :: Unique Daily Source IPs

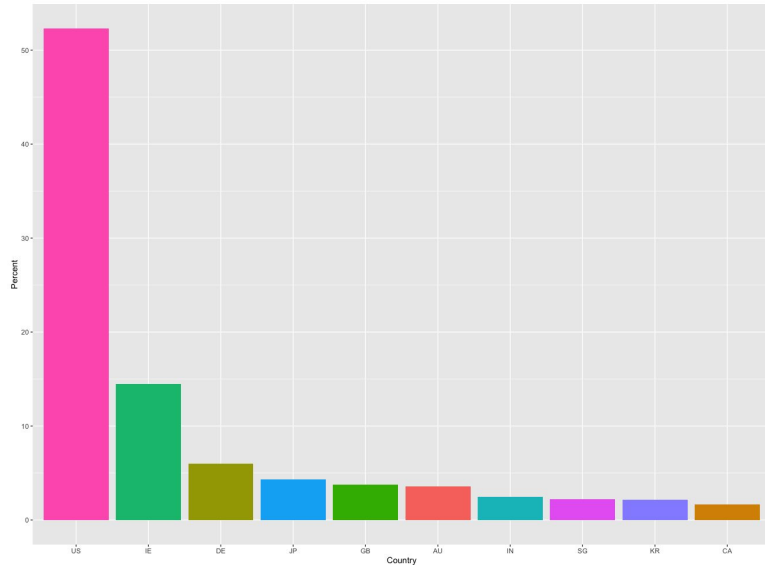


.INTERNAL Analysis :: Geographical Distribution

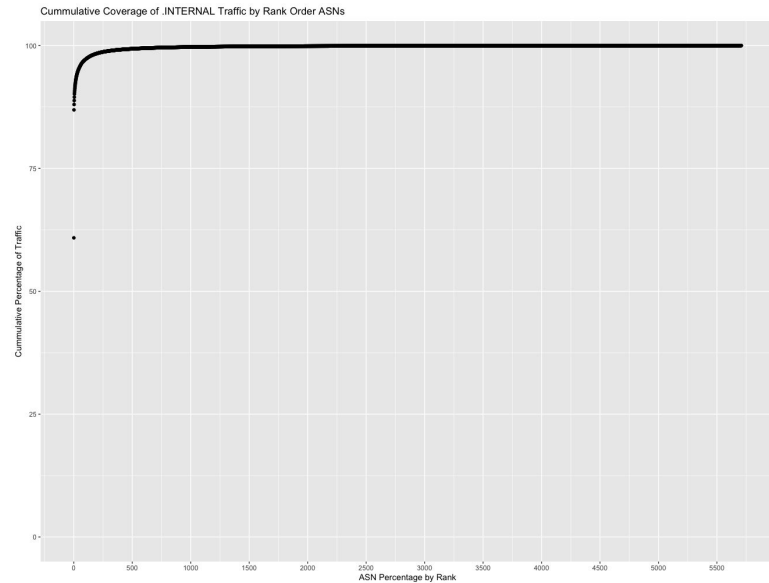
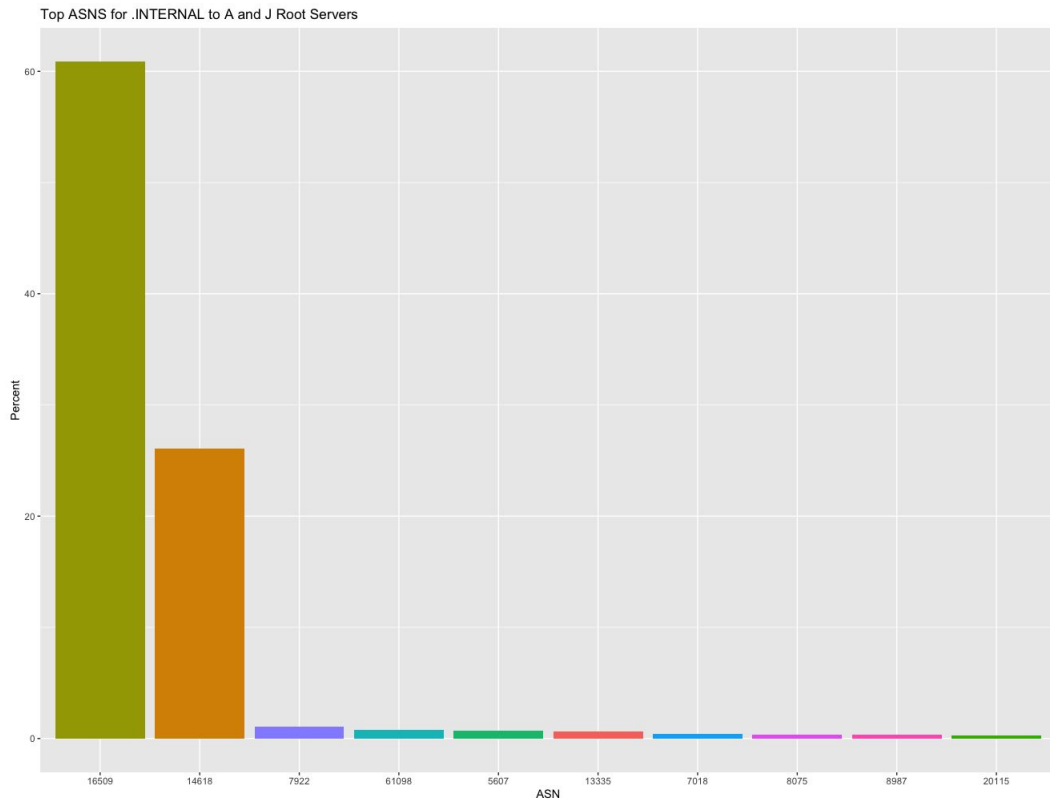
INTERNAL Global Distribution



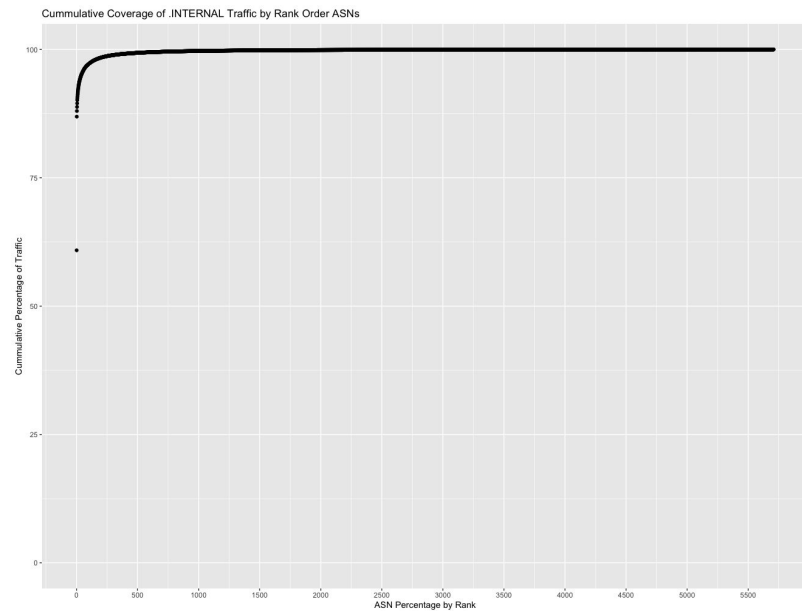
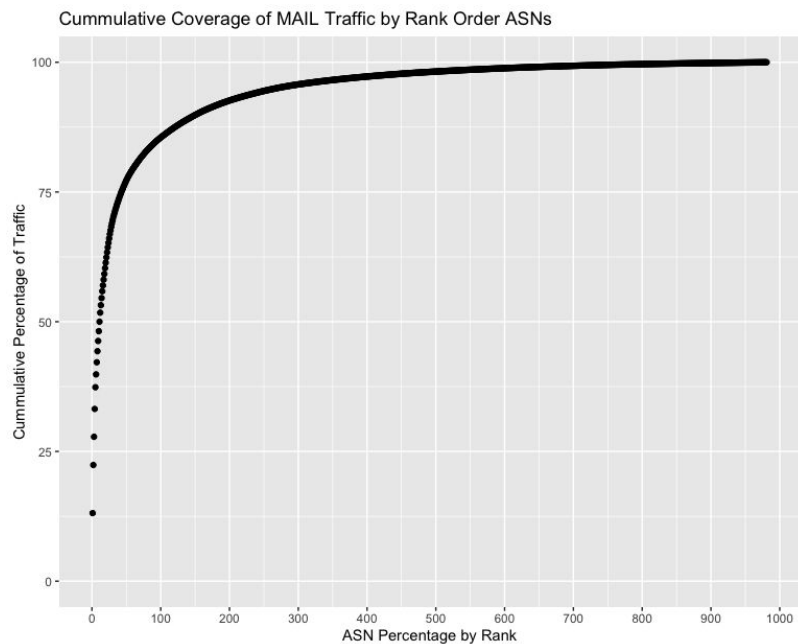
Top Countries for .INTERNAL to A and J Root Servers



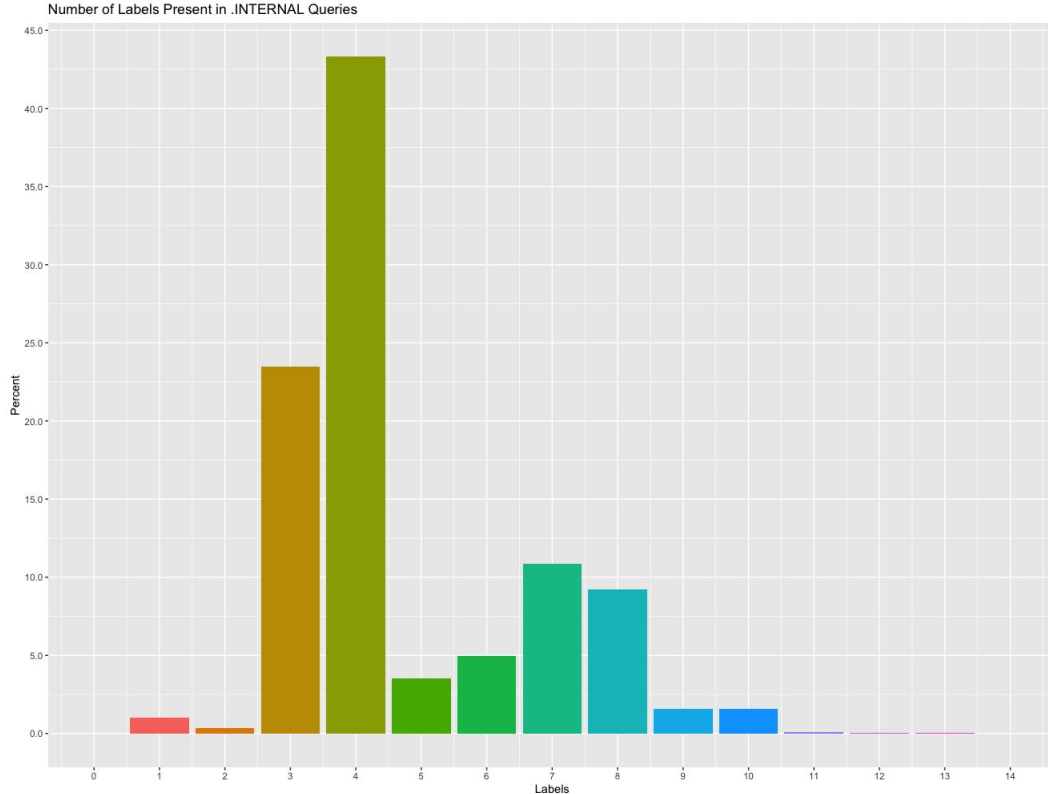
.INTERNAL Analysis :: ASN Distribution



.INTERNAL Analysis :: ASN Distribution MAIL/INTERNAL

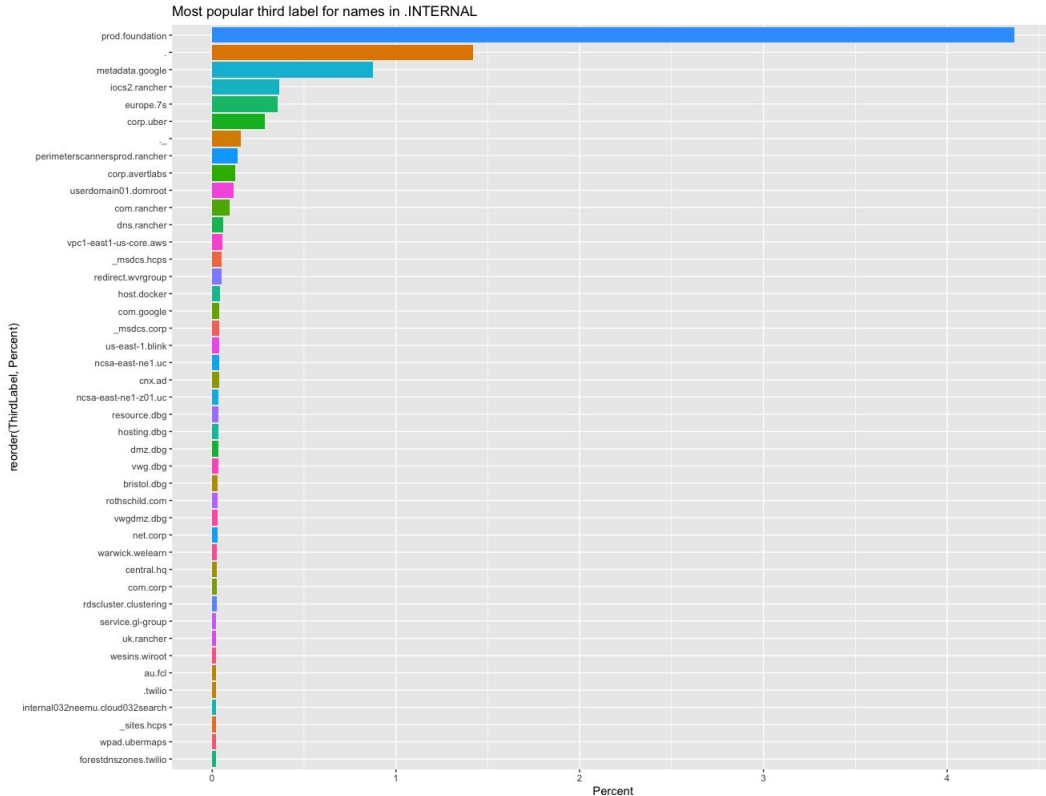


.INTERNAL Analysis :: Label Analysis



	SLD	Percent		ThirdLabel	Percent
1:	compute	64.06637157	1:	us-west-2.compute	17.1589977
2:	ec2	24.25419474	2:	us-east-2.compute	16.4330502
3:	foundation	3.29748196	3:	eu-west-1.compute	12.5938315
4:		1.07270648	4:	eu-central-1.compute	6.3346503
5:	compute-1	0.87439469	5:	ap-northeast-1.compute	5.6828674
6:	google	0.75785944	6:	prod.foundation	4.3639820
7:	rancher	0.71297776	7:	ap-southeast-2.compute	3.6556092
8:	clustering	0.55616635	8:	eu-west-2.compute	2.9668113
9:	hcps	0.39810000	9:	ap-southeast-1.compute	2.8879647
10:	corp	0.27232804	10:	ap-south-1.compute	2.5913326
11:	7s	0.26998527	11:	ap-northeast-2.compute	2.5346497
12:	uber	0.23709058	12:	com.ec2	2.4392407
13:	ubermaps	0.18868883	13:	sa-east-1.compute	2.2049954
14:	dbg	0.16952733	14:	internal.ec2	1.7763651
15:	ghdnet	0.15295878	15:	us-east-1.compute	1.7595327
16:	domroot	0.13477335	16:	ca-central-1.compute	1.4508265
17:	-	0.11673546	17:	.	1.4198201
18:	wvrgrgroup	0.10461611	18:	us-west-1.compute	1.4166473
19:	westada	0.10071690	19:	eu-west-3.compute	1.3051468
20:	avertlabs	0.09441954	20:	metadata.google	0.8742713
21:	cmw	0.06675903	21:	eu-north-1.compute	0.8657445
22:	aws	0.06358604	22:	ap-east-1.compute	0.6080187
23:	uc	0.06308703	23:	us-gov-west-1.compute	0.4586415
24:	ad	0.06271632	24:	iocs2.rancher	0.3656085
25:	maxim-ic	0.05971856	25:	europa.7s	0.3569946
26:	efi	0.05687003	26:	net.ec2	0.3532283
27:	fcl	0.05675254	27:	me-south-1.compute	0.3512589
28:	wge	0.05359981	28:	af-south-1.compute	0.3455081
29:	domain	0.05233912	29:	de.ec2	0.3376713
30:	blink	0.05020264	30:	eu-south-1.compute	0.3026175

.INTERNAL Analysis :: Label Analysis



[WHY RANCHER?](#)

[PRODUCTS](#)

[CUSTOM](#)

Why Rancher?

Rancher is a complete software stack for teams adopting containers. It addresses the operational and security challenges of managing multiple Kubernetes clusters across any infrastructure, while providing DevOps teams with integrated tools for running containerized workloads.

The DNS entry is added to the `resolv.conf` file but it's overridden by rancher.

```
#!/# cat /etc/resolv.conf
search 10.42.173.171 dns.rancher.internal busy.dns.rancher.internal rancher.internal
# nameserver 10.42.173.171
nameserver 169.254.169.250
```

<https://github.com/rancher/rancher/issues/15304>

.INTERNAL Analysis :: SVC and Kubernetes

A and J Root Traffic for SVC

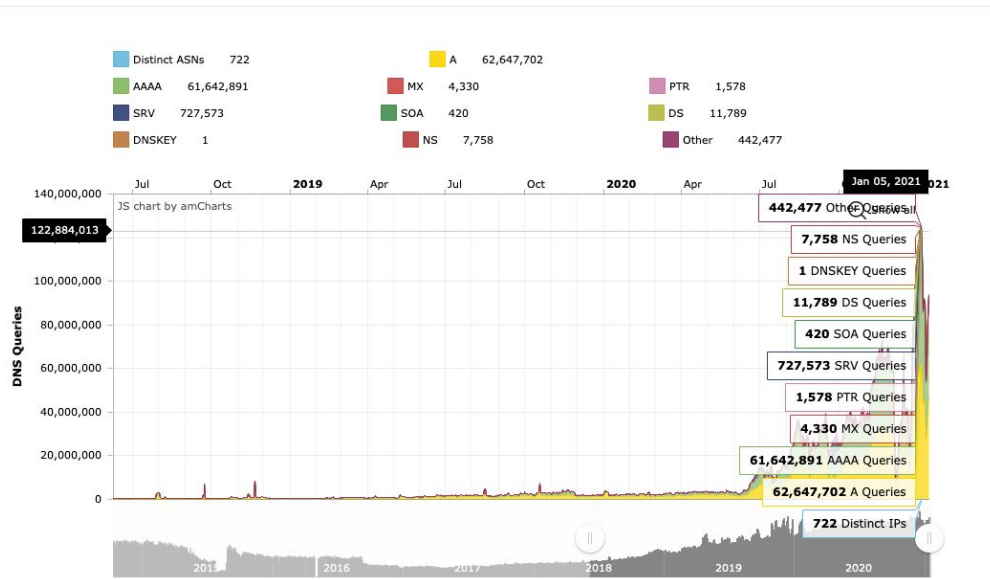
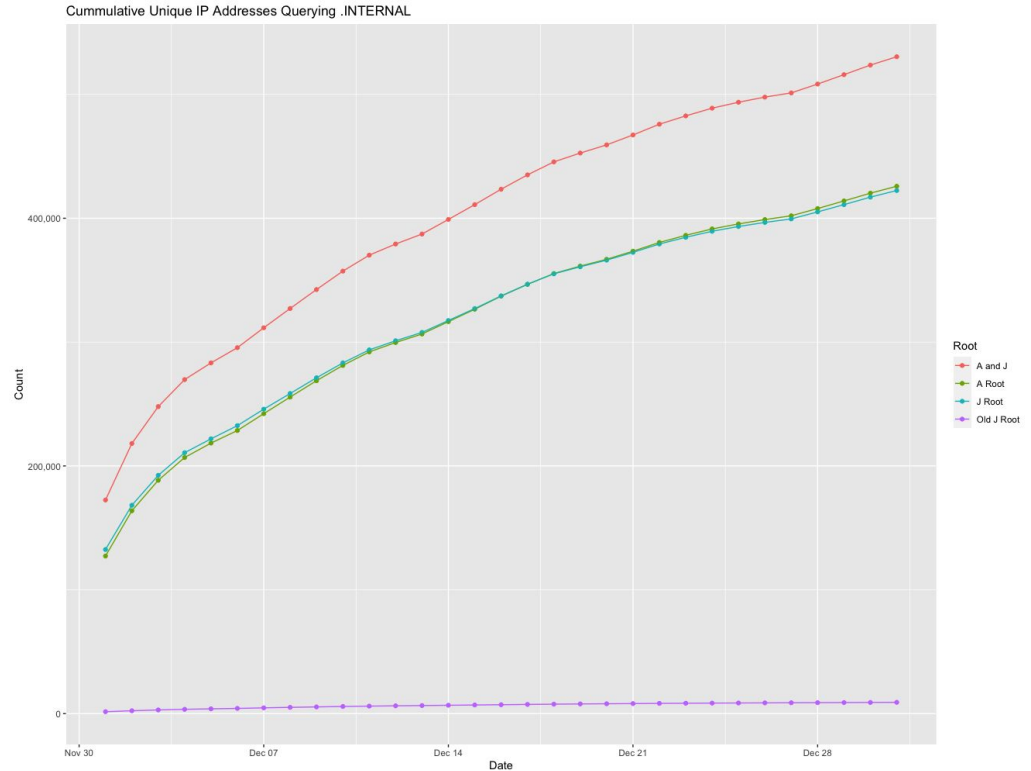
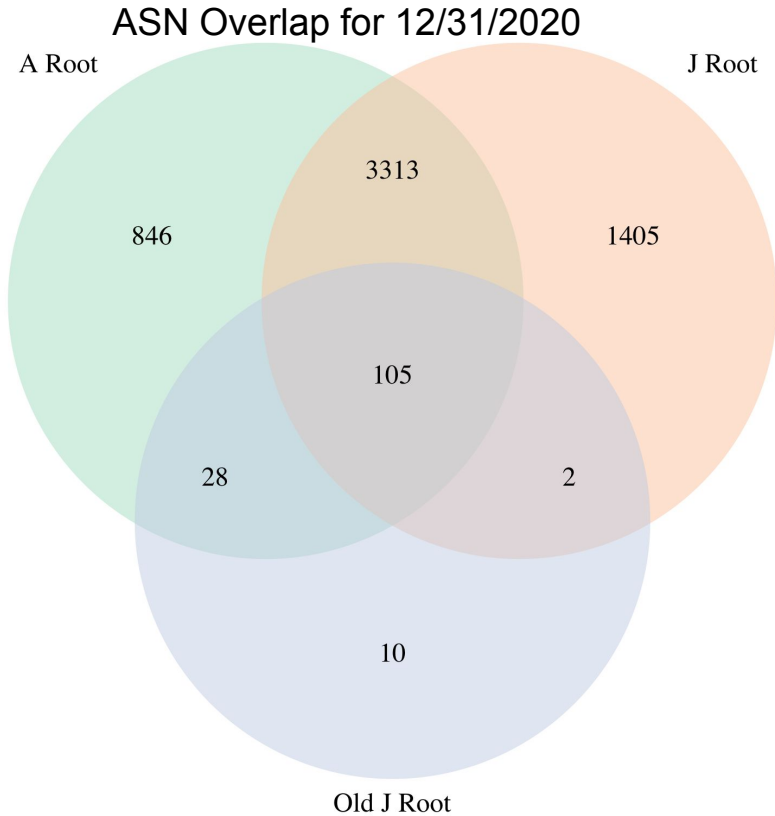


Table 6: Kubernetes References to URLs containing SVC

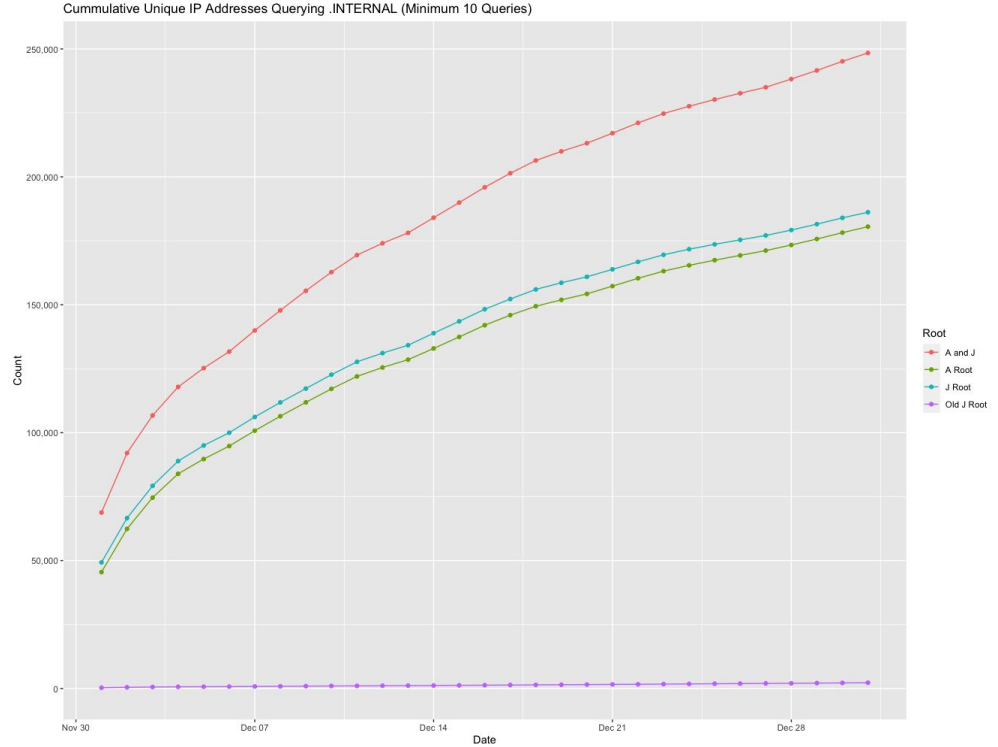
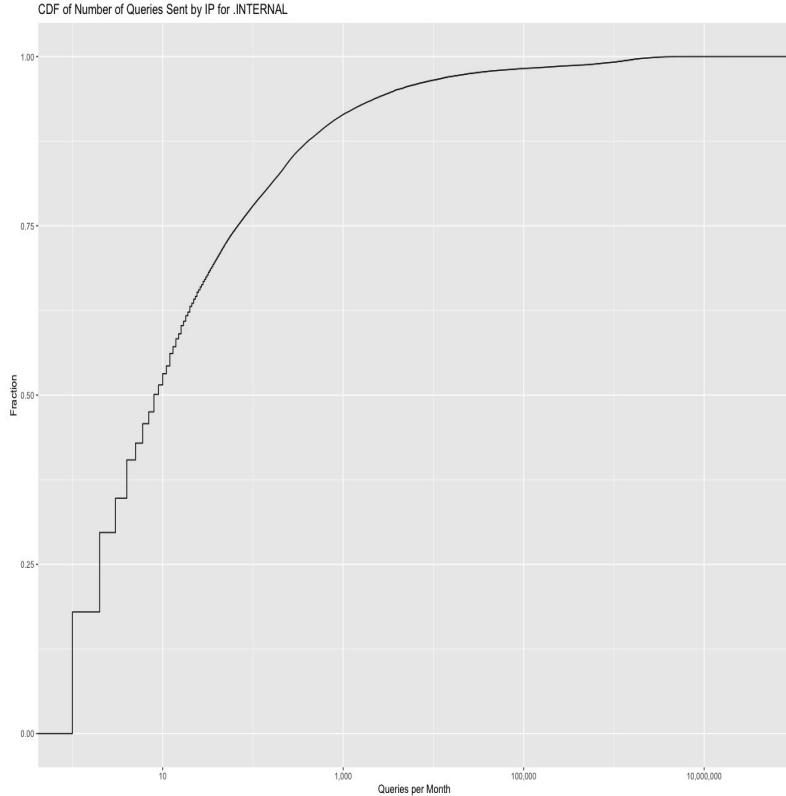
File	Line	Text
kubernetes/cmd/kubeadm/app/phases/controlplane/manifests.go	141	<code>"service-account-issuer": fmt.Sprintf("https://kubernetes.default.svc.%s", cfg.Networking.DNSDomain),</code>
kubernetes/staging/src/k8s.io/kube-aggregator/artifacts/self-contained/etcd-pod.yaml	22	<code>--advertise-client-urls=https://etcd.kube-public.svc:4001"</code>
kubernetes/staging/src/k8s.io/kube-aggregator/artifacts/self-contained/etcd-pod.yaml	28	<code>--initial-advertise-peer-urls=https://etcd.kube-public.svc:7001"</code>
kubernetes/staging/src/k8s.io/kube-aggregator/artifacts/self-contained/etcd-pod.yaml	33	<code>--initial-cluster=default=https://etcd.kube-public.svc:7001"</code>
kubernetes/staging/src/k8s.io/kube-aggregator/artifacts/self-contained/kubernetess-discover-pod.yaml	43	<code>--etcd-servers=https://etcd.kube-public.svc:4001"</code>

Data Sensitivity Analysis

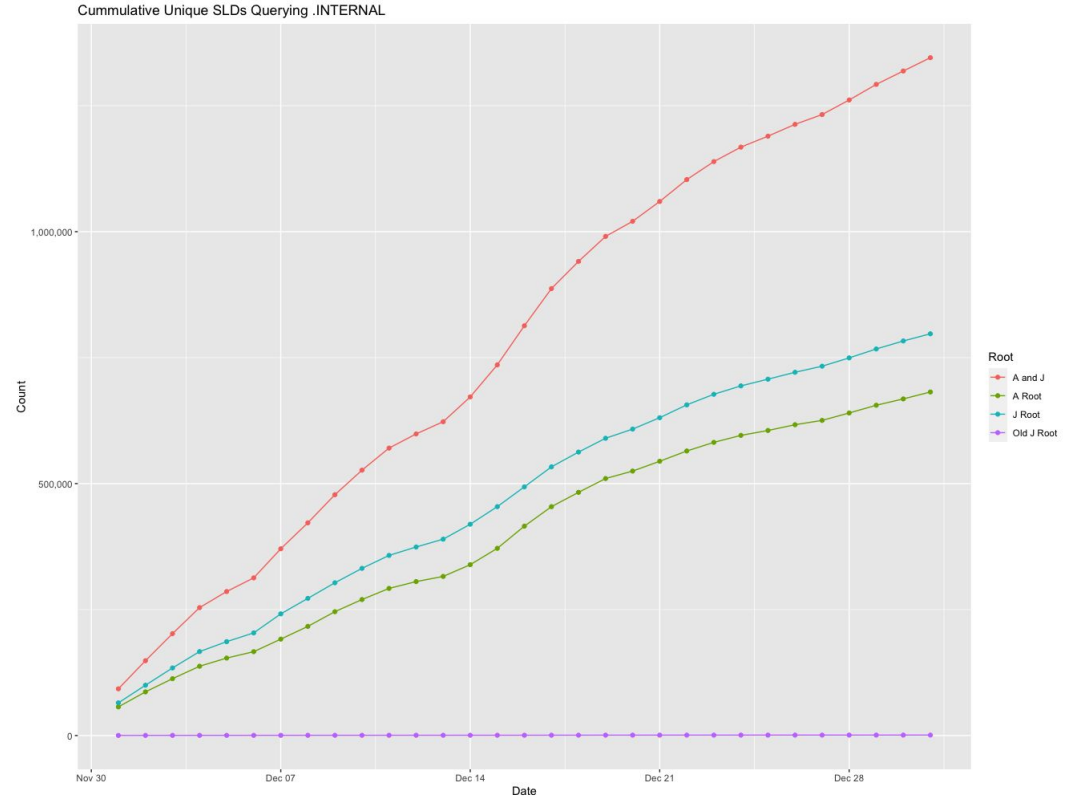
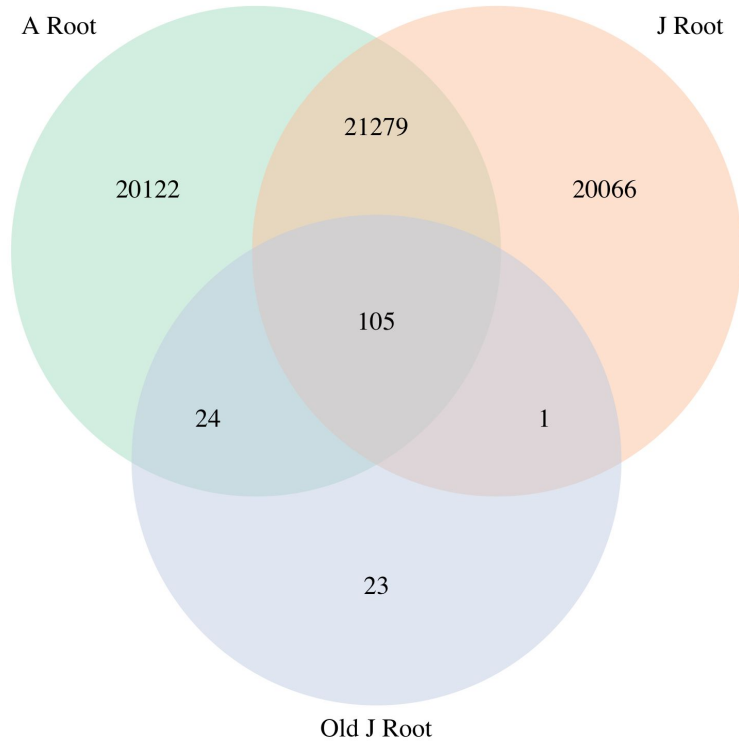
.INTERNAL Analysis :: Root ASN Overlap and IP growth



.INTERNAL Analysis :: Root ASN Overlap and IP growth



.INTERNAL Analysis :: SLD Overlap Analysis



.INTERNAL Analysis :: SLD Overlap Analysis

