

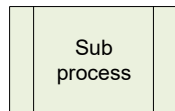
Process Legend



Process Step

START

Begin of Process



Sub-Process Step



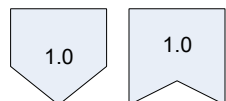
Process Flow



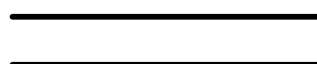
Process Input



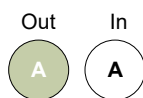
Diversion to External Process



Off Page Reference



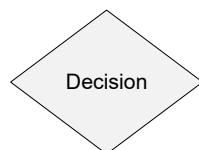
Parallel Process



On Page Reference

END

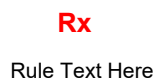
Terminator of Process



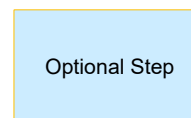
Decision



External Process not Active

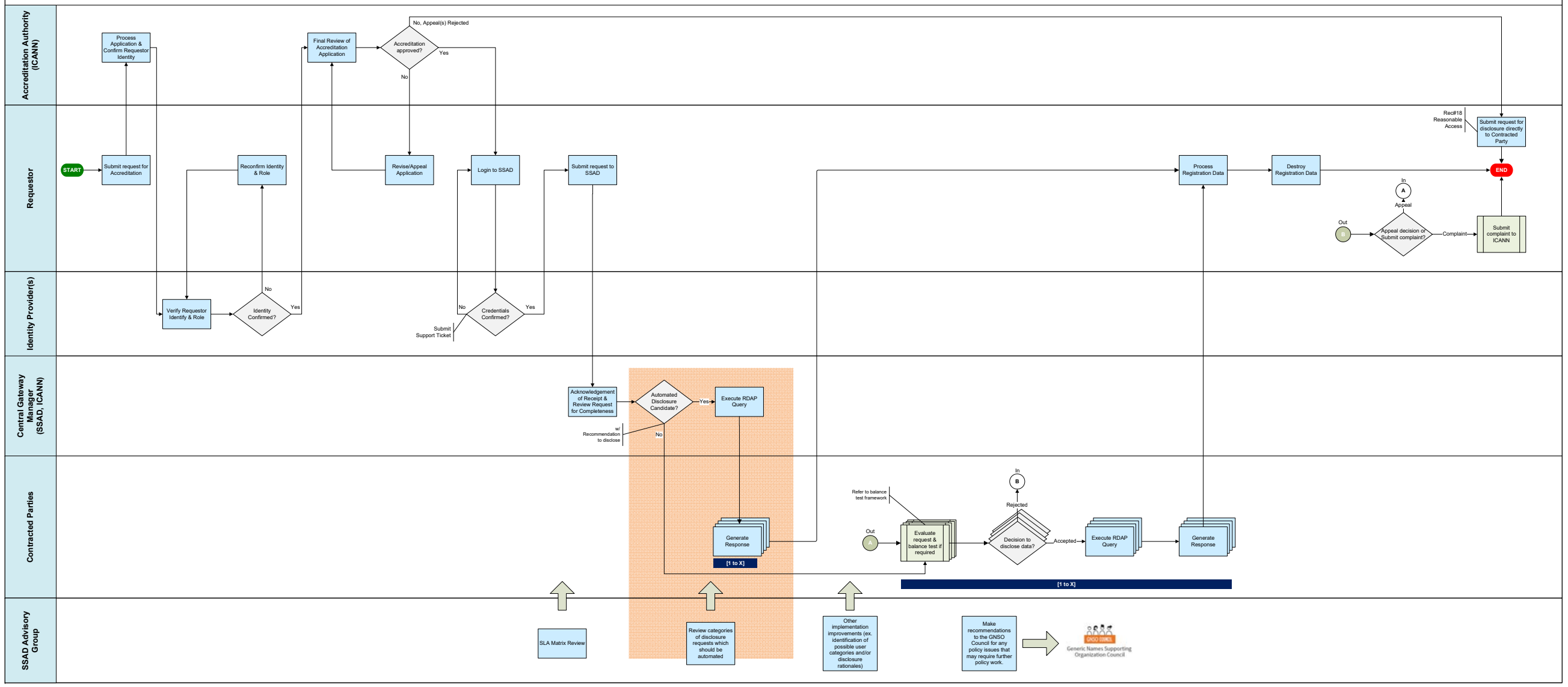


Process Rule



Optional Process Step

Standardized System for Access & Disclosure (SSAD)



Balancing Test Framework

This framework provides a set of non-binding guidance to assist controllers in performing the 6(1)(f) balancing test. Standardization of the process does not imply or guarantee access to personal data as the controller retains full discretion regarding the process and outcome of the balancing test.

DEMAND SIDE
(Requestor)

System for
Standardized
Access &
Disclosure (SSAD)

SUPPLY SIDE
(Contracted Parties w/ data)

