

CPWG Charter and “Ideal” Process

Jonathan Zuck

CPWG Charter

- Position Development Body within At-Large
- Central Ingest Point for At-Large Discussions
- Non-“Policy” issues are forwarded elsewhere...
ex. EXCOM, Finance Committee, etc.
- Issues are evaluated for relevancy to/remit of At-Large
- CPWG Facilitates
 1. “Position” Development
 2. Socialization/Feedback/Consensus Building within At-Large
 3. Workgroup Participation
 4. Drafting
 5. Action Determination (what’s next? document, outreach, etc.)
- CPWG Makes Recommendations to the ALAC

Issue Presentation (Staff or CPWG Member)

ICANN Remit?

“Policy” Issue or Forward?

Unique Individual End User
Perspective?

Develop
Position/Action

ALAC

Vote

CPWG Ingest Process

Individual End Users

- NOT a Distinct Group of People! (Grandma)
- End User is a ROLE
 - Defined by a category of individual “end user” activities (email, surfing, banking, reservations, social media, media streaming, etc.)
 - We are ALL “individual end users” MOST OF THE TIME

The At-Large Endeavors to

1. Identify the implications of ICANN actions to the “Individual End User Experience”
2. Prevent the Degradation of and Continuously Improve that Experience, whenever possible, within ICANN’s remit.

End User Experience Often “Caught in the Middle”

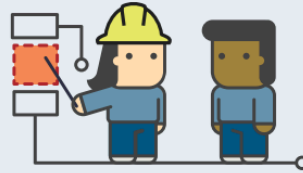


What is Policy?

- Where does policy come from?
 - Most Often Policy is Developed by the GNSO via Workgroups
 - Sometimes it is Developed by Cross Community Workgroups
 - Sometimes it is born out of the At-large community
 - Sometimes it is accidentally developed by the Board or Staff
- CPWG Develops Consensus Positions for use by...
 - WG Participants/Champions
 - Comment or Advice Drafters
 - ALAC
- CPWG Forwards Tasks if clearly not “Policy”

Our Process?

IDENTIFY THE ISSUE



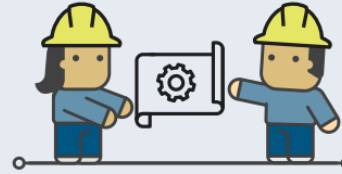
1

Any community member can bring up emerging issues to ALAC.

2

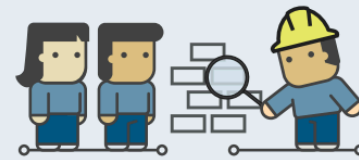
- ALAC discusses its relevance to end users and decides if it needs to respond.
- ALAC determines if issue is in scope.

SCOPE THE ISSUE



3

DEVELOP ADVICE



- ALAC appoints At-Large community member to lead small team to write draft statement and begin consultation.
- Anyone may contribute to draft statement.

4

- ALAC reviews and calls for consensus or votes on final statement.
- If ratified, ALAC sends advice to ICANN Board, ICANN org, SOs/ACs, or other ICANN community members for consideration.

RATIFY ADVICE



CPWG Position Development Process

