

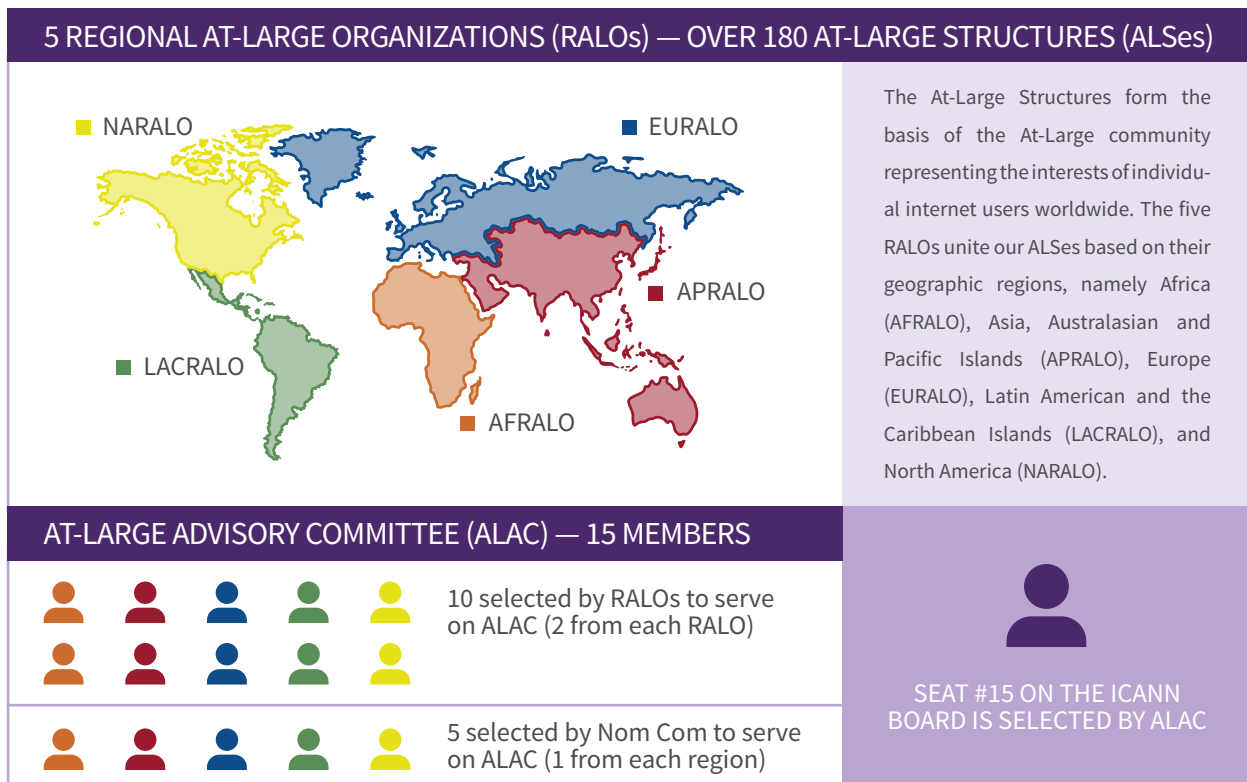


HELP US SHAPE THE INTERNET'S FUTURE

FOR MORE INFORMATION ABOUT JOINING AT-LARGE, VISIT:
ATLARGE.ICANN.ORG

REACH OUT TO AT-LARGE BY EMAILING:
STAFF@ATLARGE.ICANN.ORG

THE AT-LARGE ORGANIZATIONAL STRUCTURE



WHAT IS AT-LARGE?

Within ICANN's multistakeholder model, we are a volunteer community representing the interests of individual Internet users worldwide. From Nunavut in the Arctic to the Cook Islands in the Pacific, our community consists of more than **180 At-Large Structures (ALSes)** at the grass-roots level, grouped into **five Regional At-Large Organizations (RALOs)**. Whether it is an Internet Society Chapter or an academic organization, we further the development of Information and Communication Technologies and contribute to policy activities that influence the technical coordination of the Domain Name Systems. Within ICANN, we work to ensure that the voice of the Internet user is heard.

WHAT IS ALAC?

Within our community's bottom-up, tiered structure, the **At-Large Advisory Committee (ALAC)** is the primary organizational home for the voice and concerns of the individual Internet user. The 15-member ALAC consists of two members selected by each of the five RALOs and five members appointed by ICANN's Nominating Committee. Advocating for the interests of end-users, the ALAC advises on the activities of ICANN, including Internet policies developed by ICANN's Supporting Organizations; it also participates in ICANN's outreach and engagement programs. In addition, one At-Large member is selected by the ALAC and the At-Large Community to serve on ICANN's Board of Directors.

WHAT WE DO?

Our community offers numerous opportunities for individuals and organizations interested in engaging with ICANN. Want to influence policies such as WHOIS and new gTLDs? You may learn, discuss, and debate with members in our working groups, as well as help draft policy advice on behalf of the ALAC. Want to raise awareness of ICANN issues concerning end-users? You may take part in our capacity building webinars, as well as speak for At-Large in regional Internet events. By gaining experience, you will also have the opportunity to assume positions in important decision-making bodies in ICANN. Want to join us? **Contact staff@atlarge.icann.org**

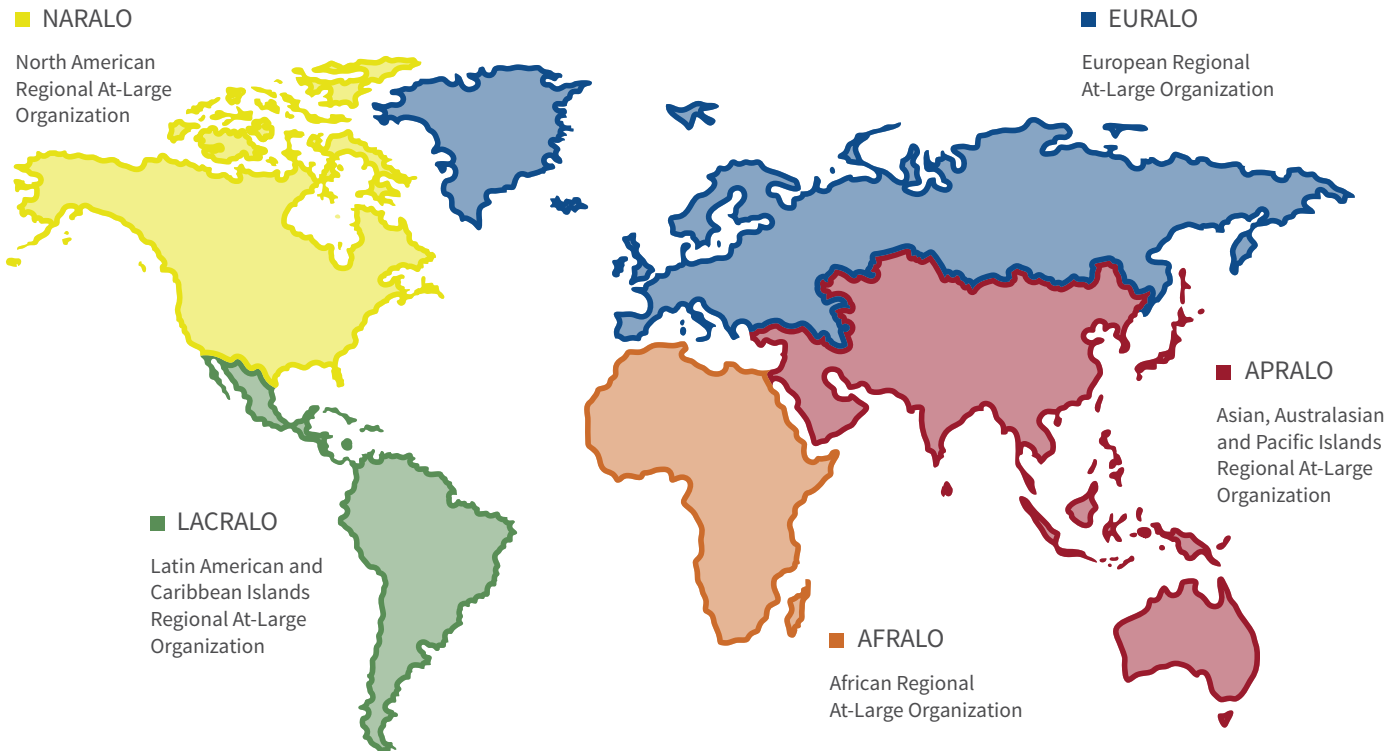


HELP US SHAPE THE INTERNET'S FUTURE

FOR MORE INFORMATION ABOUT JOINING AT-LARGE, VISIT:
ATLARGE.ICANN.ORG

REACH OUT TO AT-LARGE BY EMAILING:
STAFF@ATLARGE.ICANN.ORG

FIVE REGIONAL AT-LARGE ORGANIZATIONS



WHAT ARE THE AT-LARGE STRUCTURES (ALSes) AND THE REGIONAL AT-LARGE ORGANIZATIONS (RALOs)?

The At-Large Structures form the basis of the At-Large community representing the interests of individual internet users worldwide. The five RALOs unite our ALSes based on their geographic regions, namely Africa (AFRALO), Asia, Australasian and Pacific Islands (APRALO), Europe (EURALO), Latin American and the Caribbean Islands (LACRALO), and North America (NARALO). As the communication forum and coordination point for ALSes in their regions, the RALOs keep the Internet user community informed about ICANN activities, as well as facilitate policy discussion within the

ALAC and over 15 At-Large Working Groups. They also form internal working groups that provide collaboration opportunities for their ALS members to work on issues important to the region, ranging from Internet Governance to outreach initiatives. Furthermore, RALOs promote regional Internet events, including EuroDIG and APRIGF. Each RALO is governed by its own organizing documents, including a memorandum of understanding with ICANN. In addition to having ALSes as members, several RALOs either currently allow individual membership or are developing such provisions.

ENGAGE WITH ICANN AT-LARGE ON SOCIAL MEDIA

#ICANNATLARGE

- @ICANN_ATLARGE
- FACEBOOK.COM/ICANN.ATLARGE
- FLICKR.COM/PHOTOS/ICANN
- YOUTUBE.COM/ICANNATLARGE
- SLIDESHARE.NET/ICANNPRESENTATIONS

VISIT US ONLINE

ATLARGE.ICANN.ORG

INTERESTED IN JOINING AT-LARGE

APPLY ONLINE AT [HTTP://ATLARGE.ICANN.ORG/CORRESPONDENCE/STRUCTURES-APP.HTM](http://ATLARGE.ICANN.ORG/CORRESPONDENCE/STRUCTURES-APP.HTM)